

What did relay protection originally refer to



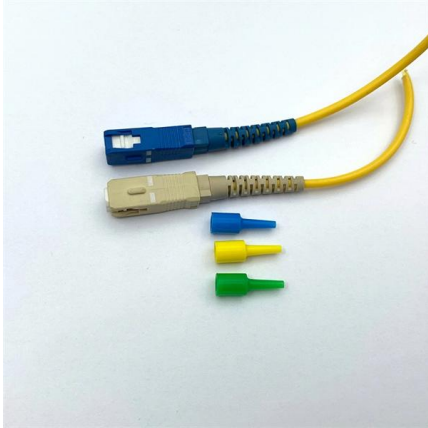


Overview

The first relay protection devices, known as overcurrent relays, were developed to detect excessive currents caused by faults such as short circuits and ground faults. It has a long and fascinating history that reflects the evolution of power systems and the. Protection relays have shaped the way engineers approach relay protection and electrical safety.



What did relay protection originally refer to

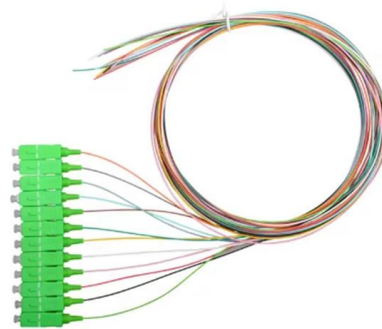


Basic Theories of Power System Relay Protection

This chapter first introduces the basic theories of power system relay protection, summarizes the functions and basic requirements of relay protection, and illustrates the basic

History of Relay Protection , Delgado Relay Protection Reference

The first relay protection devices, known as overcurrent relays, were developed to detect excessive currents caused by faults such as short circuits and ground faults.



Relays , Power System Protection 1: Principles and components

A protective relay is a relay which responds to abnormal conditions in an electrical power system, to control a circuit-breaker so as to isolate the faulty section of the system, with the minimum

Protective Relays , Electromechanical Relays

Protective Relays Monitoring Large AC Currents
Protective relays can monitor large AC currents by means of current transformers (CT's), which encircle the current



Fundamentals of Relay Protection Design

Relay protection is a crucial aspect of electrical power network transmission and distribution systems, ensuring the safety and reliability of the overall network. Designing an effective

Basic protection relay knowledge

On the other hand, unselective protection operation in the extra high voltage network - i.e. at the national grid level- may endanger the stability of the whole power system, possibly leading to a



What Is A Protective Relay And Why It Matters

What is a protective relay? It monitors electrical conditions and decides when circuits must be disconnected to prevent damage and safety risks.





Crackhead/pass.txt at master · moimikey/Crackhead ·

How to create a web form cracker in under 15 minutes. - moimikey/Crackhead

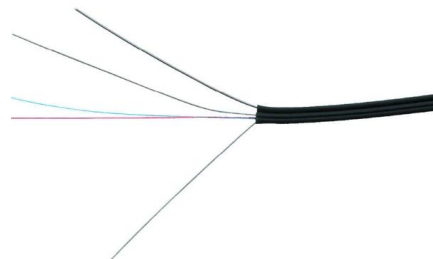


Evolution of Protection Relays: From Electromechanical

In 1901, M.O. Dolivo-Dobrovolsky introduced the first electromechanical induction current relay. This invention marked the beginning of

Power System Protective Relays: Principles & Practices

Protective relays and devices have been developed over 100 years ago to provide "lastline"of defense for the electrical systems. They are intended to quickly identify a fault and isolate it so the balance of



Introduction to Protective Relaying , Electric Power

Introduction to Protective Relaying What are Protective Relays, or Protection Relays? Protective relays are used in industrial power generation and supply



What's a protective relay and what does it protect?

This FAQ contrasts and compares traditional electrotechnical and solid state protective relays, looks at how layers of protective relays are used to



Protective Relays -- Feature Past, Present, and Future a Path of

microprocessor-based protective relays barely resemble their early 1990s distant cousins. Most early microprocessor relays became obsolete so fast (thanks to Moore's law) that again there was concern

The basics of power system protective relaying , EEP

Protective Relaying The IEEE defines protective relays as: "Relays whose function is to detect defective lines or apparatus or other power system



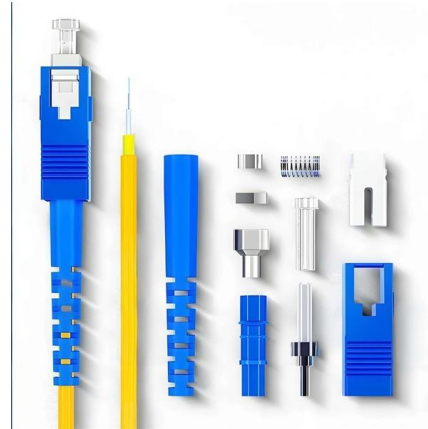
History of relay protection

The first full-fledged relay for the purpose of relay protection and automation devices appeared in 1901. The same M.O. Dolivo-Dobrovolsky, but it was an electromechanical induction current relay.



History of Global protection Relay

protection relays originated from simple fuses in the late 19th century. In 1901, the induction-type overcurrent relay was introduced, followed by ASEA (now ABB) launching the first time-delay

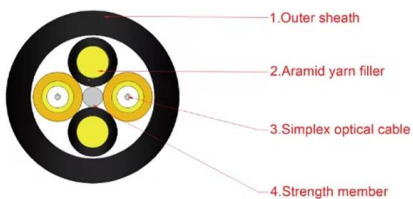


Protective Relay Basics

Traditionally, protective relays were electromechanical devices utilizing induction disk, coils, contacts, and solenoid elements to determine protective characteristics.

Types of Protective Relays

This article covers various types of protective relays, such as overcurrent, directional, and differential relays, highlighting their operating characteristics and applications



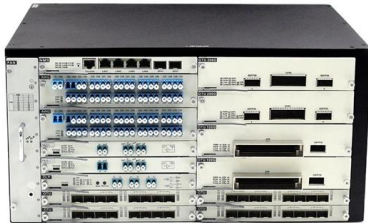
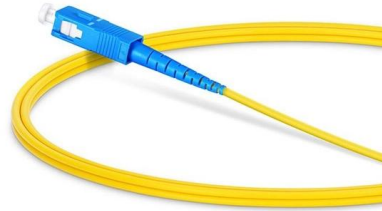
Guide To The Evolution of Protective Relays - Geatlabs

The first protective relays were electromechanical devices, introduced in the early 20th century. These relays operated based on mechanical movement,



Protective Relay: Working, Types, and Applications

Learn about protective relays, their working principle, types, and applications in power systems. Discover how relays protect transformers,



History of Fuse and Relay Protection , PDF , Fuse

This document discusses the early history of protective relay development over the past 100 years. It describes some of the initial ideas for protecting electric power

Types of Protection , Primary Protection , Back-up

However, sometimes faults are not cleared by primary relay system because of trouble within the relay, wiring system or breaker. Under such conditions, back-up



History of Electrical Protection Products , LEEYEE Electrics

Relays, originating in the late 19th and early 20th centuries, have played a critical role in monitoring, controlling, and protecting circuits. Early relays operated on electromagnetic principles.



(PDF) A review on protective relays' developments and

In this paper, after giving insight on the evolution of protective relays from onset of electrical energy to current deployment, emerging trends are also touched upon.



Understanding Protective Relays in Electrical Power Systems -

Introduction to Protective Relays Protective relays are essential devices used in electrical power systems to detect faults and abnormal conditions, initiating corrective actions to prevent equipment

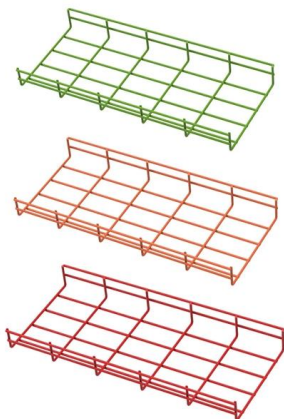
History of relay protection

Relay protection, together with additional current measurements, received a new property - absolute selectivity (whether the current cutoff that existed before was a protection of absolute selectivity is a



History of Global protection Relay

Explore the evolution of protective relays from 1880s electromechanical designs to today's smart relays with AI. Learn about key milestones from ABB, Siemens, and PILZ in overcurrent, distance, and





What is meant by Primary and Backup Protection? Meaning and

The main protection or primary protection is the first line protection which provides quick-acting and selective clearing of a fault within the boundary of the circuit section or element it protects. The



Protective Relay : Working, Types, Circuit & Its

The protective relay diagram is shown below. Protection Relay Protective Relay Working Principle A protective relay is used to protect the device once the fault is

Contact Us

For datasheets, pricing, or custom high-speed optical interconnect solutions, please visit:
<https://www.syropy.com.pl>