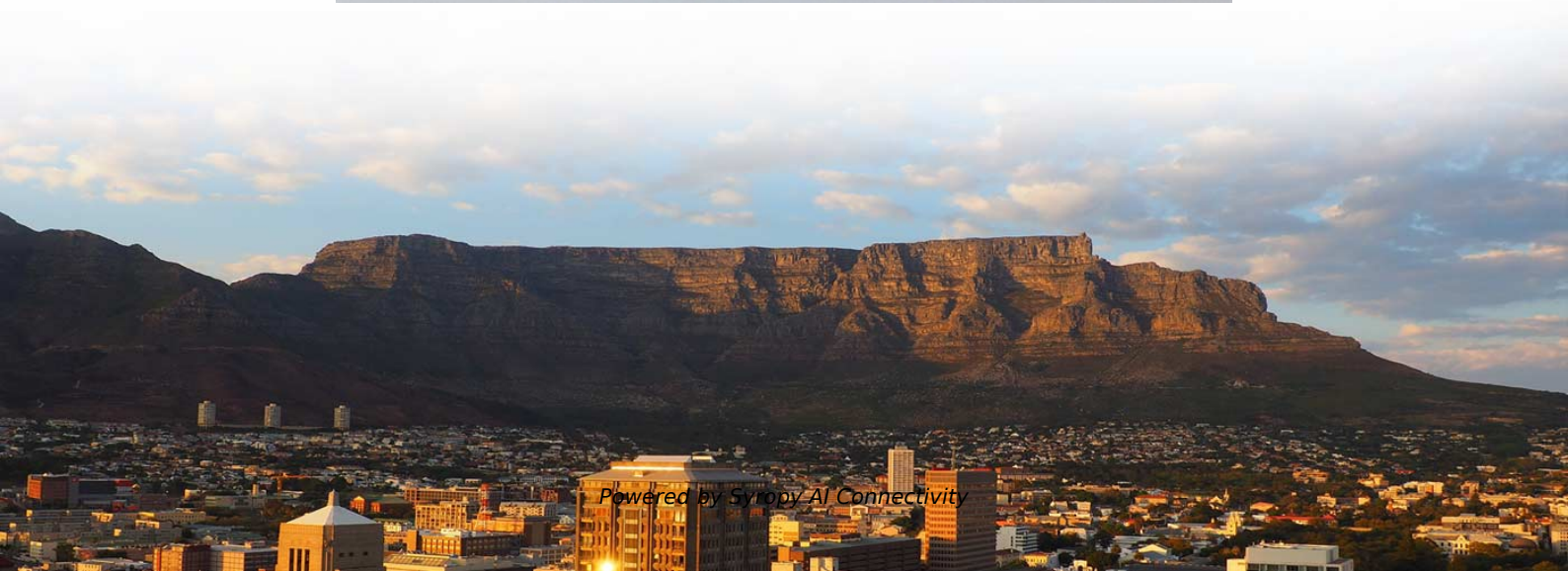


What current rating should be set for relay protection





Overview

For example, if your system has a steady current of 5A and an inrush current of 10A, choose a relay rated for at least 12-15A. Current Setting: The adjustment of the relay's pickup current by changing coil turns, expressed as a percentage of the CT's rated secondary current. Example 2: Protection of a Large Pump Motor Scenario: A 75 A motor with a service factor of 1.



What current rating should be set for relay protection

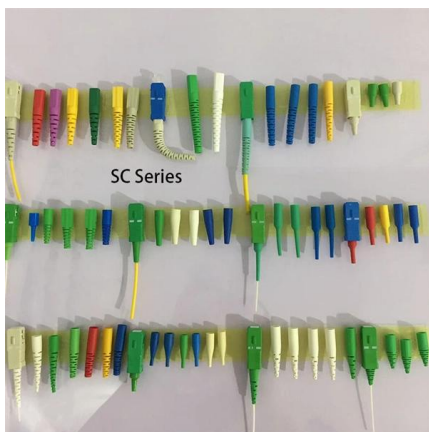


Motor Overload Setting Table: A Complete Guide

Always match the relay setting to the actual current, not just the nameplate. Use Motor Circuit Protection Tables to verify compatibility between

Relay Protection Settings (PSM, TSM, EL, OL, MF)

Protection relays employ a wide range of configurable parameters to identify defects & trip the breaker in a controlled & selected manner.

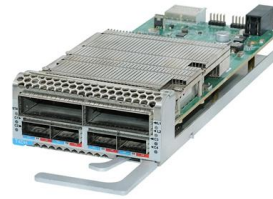


CURRENT, VOLTAGE, DIRECTIONAL, CURRENT (OR VOLTAGE)

HOLDING-COIL OR SEAL-IN-RELAY AND TARGET RATINGS Two different current ratings are generally available either in the same relay or in different relays. The higher current rating is for use

Practical handbook for relay protection engineers , EEP

Relay protection circuitry This handbook covers the code of practice in protection circuitry including standard lead and device numbers, mode of



Relay Setting in Real Power System

Relay setting plays an important role in maintaining the reliability of a Power System. Read this blog to find out more about relay setting and how it is

Power transformer protection relaying (overcurrent,

The considerations for a transformer protection vary with the application and importance of the power transformer. It is normal for a modern



Overload Relays Current Setting: Expert Guide for

When setting your overload relay, begin with the motor's full load current (FLC) rating, typically provided on the motor's nameplate. The relay





Standards for Transformer Protection , Delgado Relay Protection

The protection scheme for this transformer includes a transformer differential relay and an overcurrent relay. For differential protection, we need to determine the transformer's differential



Pick Up Current , Current Setting , Plug Setting Multiplier and Time

A relay will have a much lower current rating for motors, when compared to resistive loads, typically around 1/6 to 1/5 that of the resistive rating.



Fast shipment in stock Default white and black, contact customer service for notes

4U standard model



General Application , OMRON Device & Module

Contact ratings are the standard values for guaranteed relay performance and generally indicates the current rating of the relay contacts. The rating varies



Overload Relay Calculator - IEC: Accurate Motor

Calculate IEC-compliant overload relay settings quickly and accurately with our easy-to-use Overload Relay Calculator. Ensure motor protection today!



Instantaneous Overcurrent Protection (ANSI 50)

This article introduces the working principle of Instantaneous Overcurrent Protection, explains its function, and summarizes the calculation of Instantaneous



Distribution Automation Handbook

When the protection is implemented using a current relay, the current value at which the relay should operate must be determined first. By means of the stabilizing voltage and the current setting, the

What is Time Grading in Relay Protection

Figure 1 shows how time-graded protection is achieved using overcurrent relays that have either inverse time or definite time characteristics.



About relay contact current ratings

Current flows through the diode and the coil until the energy from the magnetic field is dissipated. Some relays, such as the Azatrax MRAPR Auxiliary Power Relay



Protection Relay Types and Testing Procedures

Introduction In modern electrical systems, protection relays are critical for ensuring safe and efficient operations. These devices safeguard assets

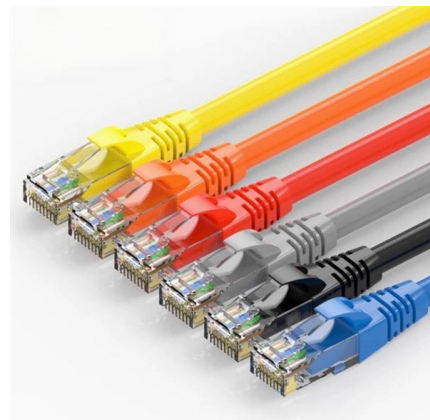


51 Relay Setting vs. CT Ratio

So unless the CTs have a rating factor for ambient, the 51 pickup should always be set under the relay CT primary value? Let's say a 400:5 CT had a thermal rating of 2x.

Relay Protection in HV/MV Substations: Calculations,

Relay protection for transformers involves calculations for differential current thresholds, through-fault stability, inrush restraint, and harmonic filtering to



How to know if you set the correct current on a motor

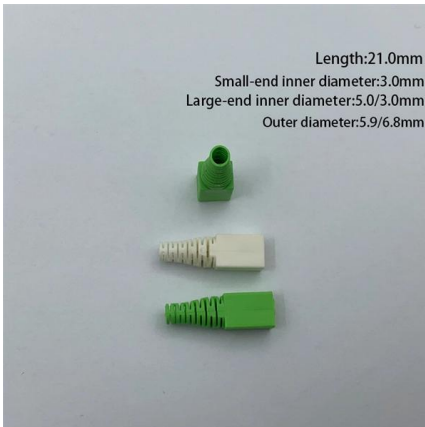
However if motors are designed with a service factor, which is then shown on the nameplate eg. 1.15, the set current for the overload relay can be

Motor protection: Three common mistakes



and how to

Set correct overload parameters: Configure overload relays based on the motor's full load current. Accurate settings prevent unnecessary tripping while



Technical Explanation for Motor Protective Relay

With an instantaneous Motor Protective Relay, the motor is considered to have started when motor current exceeds the rating by at least 30% and the start time circuit will begin operating.

How Do I Choose A Relay Current? , Best Practices

A common practice is to select a relay with a current rating 20-30% higher than the maximum load current. This margin accounts for unexpected surges, variations in



Understand Relay Specifications to Get the Most Out of

Module Switching Specifications vs. Relay Switching Specifications Relay specifications do not always apply at the module level for a variety of reasons.



Fundamentals of Relay Protection Design

Relay protection is a crucial aspect of electrical power network transmission and distribution systems, ensuring the safety and reliability of the overall network. Designing an effective



General Application , OMRON Device & Module

General Applications of Electrical Relays Basics
Technology Applications Standards Glossary
Relay Glossary Search by alphabetical index
Search by Category

Protective Relay Basics Part 2

Part 1: Protective relay compared to low voltage circuit breaker. Review fundamental concepts, components, and terminology using the electromechanical overcurrent relay as a foundation.



Relay Settings Calculations

During CT saturation, current resulting from CT errors appears as differential current and can cause relay mal-operation. To avoid relay mal-operation, set Slope 2 as high as possible.

Choosing a Proper Relay Amperage



When switching inductive loads, always select a relay whose contact rating safely exceeds the expected startup (inrush) current. In this example, a 20-30 Amp



Contact Us

For datasheets, pricing, or custom high-speed optical interconnect solutions, please visit:

<https://www.syropy.com.pl>