

# **What cables are connected using cable trays**





## Overview

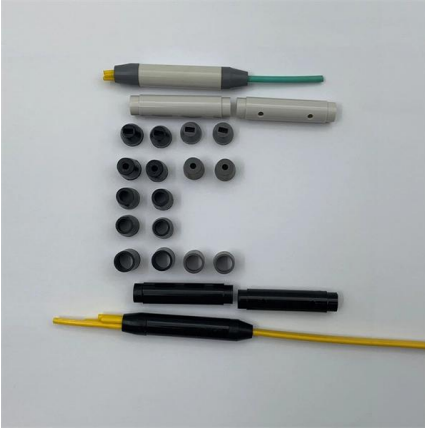
---

A solid-bottom tray provides the maximum protection to cables, but requires cutting the tray or using fittings to enter or exit cables. A ventilated tray has openings in the bottom of the tray, allowing some air circulation around the cables, water drainage, and allowing some dust to fall through the tray.



## What cables are connected using cable trays

---

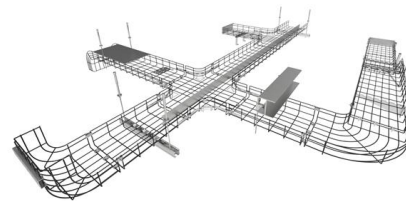


### **Cable Tray Systems: A Complete Guide to Types**

Discover the essential guide to cable tray systems. Learn about ladder, trough, and wire mesh types, key components, and expert installation tips

### **A Guide to Installing and Supporting Electrical Cable Trays**

A professional guide to installing electrical cable tray systems per NEC Article 392. Covers support, securing cables, and fill calculations.



### **, IEWC**

Discover the definition, applications, and benefits of tray cables in this comprehensive technical guide from IEWC.

### **What Is a Cable Tray? Types, Materials, and Uses**

A cable tray is a structured mechanical support system used in the electrical wiring of buildings and other structures to organize and secure insulated power, control, and communication



### Everything You Need to Know About Cable Trays , Cable Trays

Discover the different types of cable trays, their many benefits when used in electrical wiring and network cabling, installation processes, and essential maintenance tips for keeping your

### Cable Tray Technical Guide A practical guide to product selection and

Cable tray installed in a hazardous location must contain only those cables that are appropriate for this type of environment as defined in Chapter 5 of the NEC.



### Cable Tray Technical Guide A practical guide to product selection and

SOLID-BOTTOM CABLE TRAY Providing additional cable protection, solid-bottom cable tray is sometimes preferred to support and protect numerous small instrumentation and control cables.



## 100+ Essential Questions Answered About Cable Trays:

Discover over 100 expert answers about cable trays, covering key topics like material selection, load capacity, installation methods, and maintenance.



## What Are Tray Cables and Their Types?

FAQs about Tray Cables What Makes a Tray Cable Different from a Standard Multi-Conductor Cable? Tray-rated cables are designed to withstand

## Master Cable Tray Installation: A Professional Step-by

Learn how to install cable trays for large-scale projects with our professional, step-by-step guide covering industry standards, safety protocols,



## Types of Cable Trays - Purpose, Advantages,

Cable trays are components of support systems for power and communications cables and wires. A cable tray system supports and protects



## Understanding cable trays

Ladder trays generally get used where there are larger bundles or heavier cables. The ladder cable tray has two side rails connected by cross members, or rungs.



## What Is A Cable Tray? 5 Types Of Cable Trays

Cable trays are a critical component in modern electrical systems, providing a structured pathway for the organization and protection of electrical, data, and communication cables. They serve as an

## The Ultimate Guide to Tray Cables: Types, Applications and

Tray cables (TC) are multi-conductor cables designed and rated for installation in cable trays and raceways or supported by messenger wires. Unlike standard electrical cables, tray cables



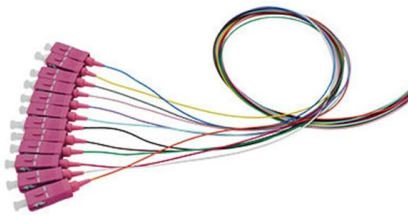
## Types of Cable Trays - Purpose, Advantages,

Cable tray is alternatives to wire ways and electrical conduits, which completely enclose cables. Study types of cable trays, purpose, advantages.



## How to Install Cable Tray: A Comprehensive Guide to Different Cable

Welcome to our step-by-step guide on installing cable trays! In this video, we'll explore the different types of cable trays available and provide detailed instructions for their installation.



### Cable tray

Several types of tray are used in different applications. A solid-bottom tray provides the maximum protection to cables, but requires cutting the tray or using fittings to enter or exit cables. A deep, solid enclosure for cables is called a cable channel or cable trough. A ventilated tray has openings in the bottom of the tray, allowing some air circulation around the cables, water drainage, and allowing some dust to fall through the tray. Small cables may exit the tray through

### What Is A Cable Tray? 5 Types Of Cable Trays

A cable tray is a structural system used to support and manage electrical cables in various settings, such as industrial, commercial, and residential environments.



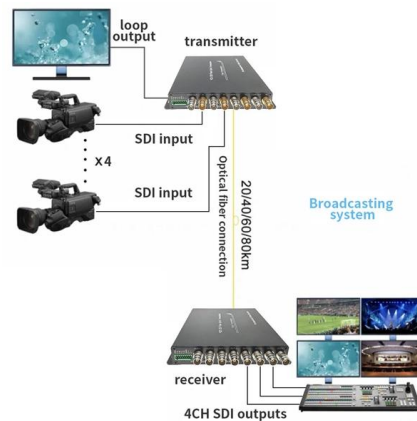
### Type of Tray Cable and Benefit of Cable Trays

Tray Cable With the rise of cable trays to transport cables as an effective alternative to conduits and with their own advantages and disadvantages to be considered, cable trays require the



### Cable Tray Types and Sizes

What is Cable Tray Systems? An electrical cable tray is a type of containment system used to support insulated electrical cables for power distribution, control,

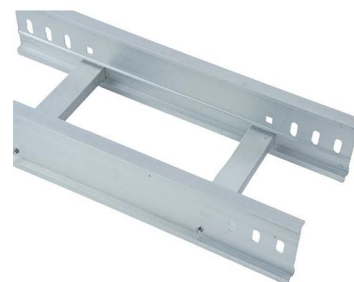


### Cable Tray Systems: Requirements and Best Practices

Cable trays must be adequately supported to carry the weight of cables plus any additional loads (such as snow or ice for outdoor installations). Use supports (wall brackets, trapeze

### Connecting Cable Trays: Your Guide to Secure and

Learn common methods for connecting cable trays safely and efficiently. Our guide covers splice plates, quick-connects, and key tips for secure



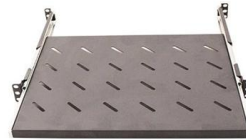


## Types of Cable Trays: Benefits and Uses

Different types of cable trays offer key benefits, optimizing cable management and enhancing efficiency in electrical systems.

### Types of Cable Trays - Purpose, Advantages,

Cable tray systems are alternatives to wire ways and electrical conduit, which completely enclose cables. Cable trays are capable of supporting all types of



Webit Cabling

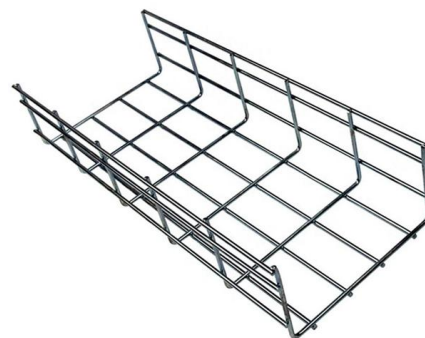


### What are Cable Trays & Different Types of Cable Trays

These trays provide a reliable, rigid, and durable structural system that is used to accommodate all types of electric cables and intricate wiring.

### Cable Tray Installation

Learn everything about cable tray installation with our complete guide. Discover types, steps, and safety tips for efficient electrical cable management.





## Contact Us

---

For datasheets, pricing, or custom high-speed optical interconnect solutions, please visit:

<https://www.syropy.com.pl>