

What are the testing methods for terminal boxes





Overview

Learn how to evaluate the quality and performance of terminal block connectors, covering key factors such as material quality, conductivity, mechanical strength, corrosion resistance, and protection rating to ensure reliable electrical connections. Mechanical tests for terminal blocks The mechanical tests are primarily used to test the clamping parts of the terminal blocks and the insulating housings. This comprehensive guide will provide you with step-by-step instructions on how to effectively process relay testing. By following these procedures, you can identify any potential problems early on and take appropriate measures to rectify them. Due to this proliferation of HVDC systems, it is anticipated that in some locations two or more HVDC converter stations will be installed with only a short electrical distance between them and will form a multi-infeed (MI)-HVDC system.



What are the testing methods for terminal boxes

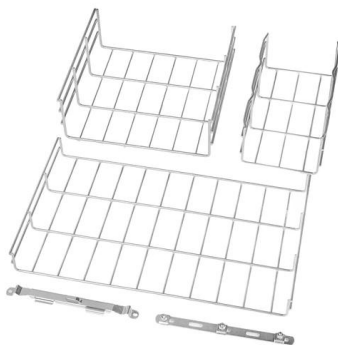


Mechanical tests for terminal blocks , Phoenix Contact

On this page you will find various mechanical tests for terminal blocks. For a quick and clear overview, the tests and standards that are explained on this page are listed in turn below. This mechanical test

Testing Methods for Corrugated Boxes to Ensure Best

Corrugated boxes are widely used in packaging due to their durability, lightweight nature, and cost-effectiveness. However, to ensure they meet the



Black-Box Testing: Complete Guide to Functional

Master black-box testing with practical techniques including equivalence partitioning, boundary value analysis, and decision tables. Learn

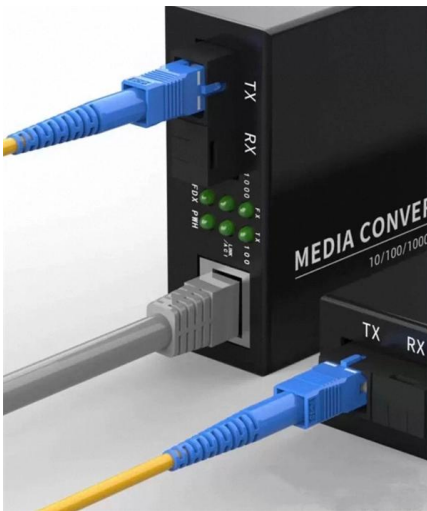
MIL-STD-202G METHOD 211A TERMINAL STRENGTH

METHOD 211A TERMINAL STRENGTH 1.
PURPOSE. This test is performed to determine whether the design of the terminals and their method of attachment can withstand one or more of the applicable



Corrugated Box Testing Methods to Ensure Packaging

The packaging industry uses cardboard as the main material for packaging. Ensure Packaging Quality cardboard Box Testing Methods is used.



Electric Panel Installation Method Statement

This document provides a method statement for installing and terminating electric panels and distribution boxes. It outlines 4 steps: 1) Pre-installation preparation



Top 3 Corrugated Box Testing Methods to Ensure Packaging

In this blog post, we will explore the top three testing methods for optimal packaging quality in 2023.





Terminal Strength Testing Method 211A

This document describes test method 211A for determining the strength of terminals by subjecting them to mechanical stresses. It outlines 5 test conditions (A-E)



Motor terminal box connection methods and procedures

As with most tasks, there are many ways to terminate motor leads and each one has a following who believe it is the best method. Here we will discuss some of these

Mechanical tests for terminal blocks , Phoenix Contact

On this page you will find various mechanical tests for terminal blocks. For a quick and clear overview, the tests and standards that are explained on this page are listed in turn below. This mechanical test



Black Box Testing , What it is? Types, techniques

Explore Black Box Testing: its definition, types, techniques, and real-world examples. Understand this vital software testing method.



Mechanical testing of terminal blocks

Testing for damage to and accidental loosening of conductors of a terminal block proves both the high mechanical safety and the reliable connection of the wire.



ASHRAE Standard 130-2016 Laboratory Methods of

ASHRAE Standard 130-2016 Laboratory Methods of Testing Air Terminal Units specifies instrumentation, test installation methods, and

Electrical Terminal Boxes: The Ultimate Guide for US Professionals

Unlocking Secure Connections: An Essential Guide to Electrical Terminal Boxes for US Professionals Electrical terminal boxes, though often unassuming, are foundational components



How to Evaluate the Quality and Performance of

Learn how to evaluate the quality and performance of terminal block connectors, covering key factors such as material quality, conductivity,





A Comprehensive Guide to Packaging Testing Methods

Looking to improve your packaging quality and compliance? Our guide covers how to choose the right packaging testing methods, equipment,

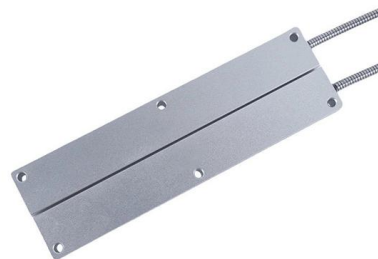


Design, testing and simulation of main terminal box and rupture panels

Download Citation , Design, testing and simulation of main terminal box and rupture panels for an electric motor , Arc flash protection around electrical process equipment is paramount in any

Package Testing Methods to Ensure Shipment Safety

Discover key package testing methods to protect your products during shipping. Ensure safety and compliance with expert guidance from Creopack.



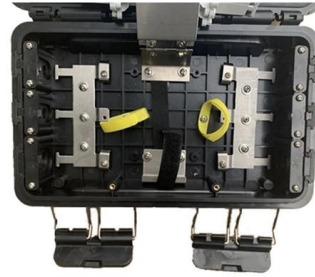
The design and performance of high

The failure of terminal boxes in service has led to new developments in two main respects. Firstly, connection arrangements are designed to be through-fault-proof and the possibility of a dielectric



Corrugated Box Testing Methods and Meaning

Corrugated box testing equipment may be as simple as a dropped weight or as complex as a computer-controlled machine. Below, we've outlined



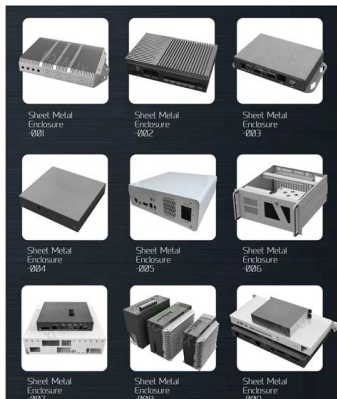
Design, Testing, and Simulation of Main Terminal Box and Rupture

It is shown that more robust simulation techniques are needed to accurately capture the physics of an arc flash and make simulation a feasible tool for design. Recommendations are made



Design, testing and simulation of main terminal box and rupture panels

Laboratory testing of motor terminal box structural integrity and rupture panel efficacy during a fault is carried out. Simple calculations are made to validate the design and are compared to



Testing Methods for Packaging Materials

There are several standard testing protocols for packaging materials, and this chapter provides detailed information about testing methods that are in use to evaluate various properties of packaging



9 Corrugated Box Test Methods to Ensure Packaging Quality

Why: To test material quality, stack strength, pallet transport durability One of the popular methods for testing the stack strength of corrugated boxes is the "Edge Crush Test" or ECT. Each side of a



Business Standard

Hier sollte eine Beschreibung angezeigt werden, diese Seite lässt dies jedoch nicht zu.

Contact Us

For datasheets, pricing, or custom high-speed optical interconnect solutions, please visit:
<https://www.syropy.com.pl>