

What are the functions of a PoE switch





What are the functions of a PoE switch



What is a PoE Switch? Learn PoE Switch Benefits

PoE switches not only manage network traffic, but they also supply electrical power over Ethernet cables - simplifying device installations and

What Is a PoE Switch and How It Works: Basics and

A PoE Switch is a type of network switch that sends both data and electricity through one cable. This helps power devices like IP cameras or



What is a PoE switch (Power over Ethernet switch)?

Power over Ethernet switch (or PoE switch) is an access layer technology that combines data signals and electrical power into a single Ethernet cable

What Is a PoE Switch? Complete 2025 Guide (For Everyone)

A PoE switch is a special network switch that sends electricity and internet data through one regular Ethernet cable (like

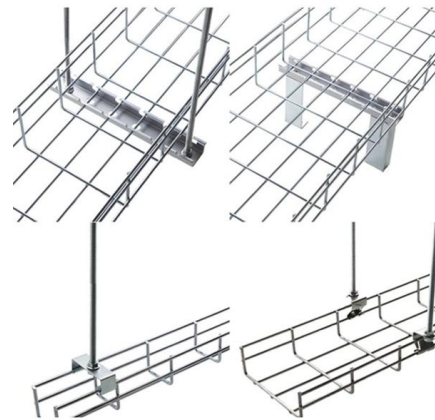


A Comprehensive guide to PoE Switches and their Uses

A PoE (Power over Ethernet) switch performs multiple essential functions in modern networking by integrating both power supply and data transmission over a single

What Is a PoE Switch? Complete 2025 Guide (For Everyone)

Learn what is a PoE switch, how it works, types, power budgets, and real uses. Simple 2025 guide for home, office, and



What is a PoE Switch and How Does it Work?

A PoE (Power Over Ethernet) switch is a switch that can transmit data signals to some IP-based terminals (such as IP phones, wireless LAN access



Quality Guaranteed Custom 24 Port POE Optical Fiber Switchboard

Key attributes ports 24 transmission rate 10/100/1000Mbps function LACP, POE, QoS, SNMP, Stackable, VLAN Support products status Stock communication mode Full-Duplex private mold No



What Is PoE Switch? How Does It Work?

Are you wondering about what is PoE switches exactly? how do they work and what are the advantages and disadvantages of them? read this blog.

What is a PoE Switch? Learn PoE Switch Benefits

Learn everything about PoE switches-how they work, their key benefits, common applications, limitations, and how to choose the right one for



What is a POE Switch?

A PoE switch 1 is a network switch that delivers both power and data to devices through standard Ethernet cables, simplifying installations



What is a PoE switch (Power over Ethernet switch)?

A PoE switch provides power and network connectivity over Ethernet cables to access points, security cameras, and other Internet of Things devices

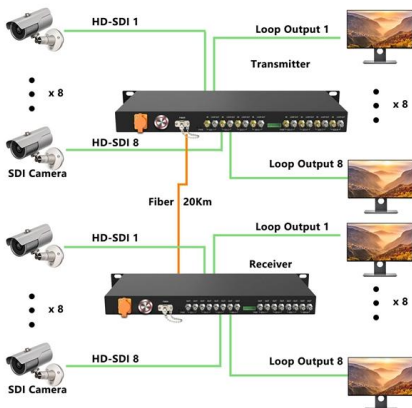


What Is a PoE Switch and How It Works: Basics and

Discover what a PoE switch is, how it works, and where it's used. ABPTEL offers high-quality PoE solutions for smart networks, surveillance

What is a PoE switch (Power over Ethernet switch)?

Power over Ethernet switch (or PoE switch) is an access layer technology that combines data signals and electrical power into a single Ethernet



PoE Switches Explained: All the Important Facts You

A PoE switch is a network device that supports the simultaneous transmission of data and power through Ethernet cables, designed to simplify installation and



A Comprehensive guide to PoE Switches and their Uses

A PoE (Power over Ethernet) switch is a network switch that delivers both power and data through a single Ethernet cable to connected devices such as IP cameras,



What is a POE Switch? A Guide to Powering Your

A POE switch, or Power Over Ethernet switch, is a network switch that has the ability to simultaneously send data and power over an Ethernet cable

What Is A PoE Network Switch? Read Benefits And Key Differences

Learn the advantages, differences, and use cases of PoE network switches. Discover if a PoE switch is worth it for your setup and how it



What is a PoE switch? Features, advantages, types, and

What is a PoE Switch and what devices use a POE Switch? How to choose POE Switches? Learn the main types of PoE Switches and solutions



What Is PoE Switch? Where Can You Use It?

If the PoE Ethernet switches does no detect any connected devices requesting power, then it will simply function as a normal Ethernet switch. No special



What Is PoE Switch? How Does It Work?

A PoE switch is a network switch that provides both power and data transmission over a single Ethernet cable to connected devices. This allows network devices

What Is PoE Switch: Uses & How to Choose One

Curious what is a PoE switch? Discover how it works, what devices it powers, key benefits, potential drawbacks, and expert tips for choosing the right



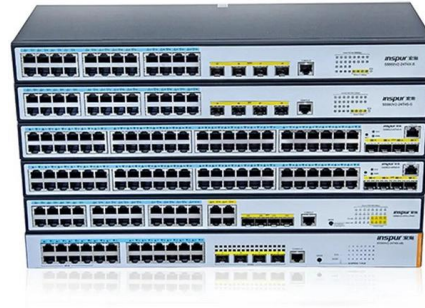
What Is Poe Switch: Everything You Need to Know

What is a Poe Switch and How Does It Work? Want to simplify your network cabling and reduce costs? Look no further than Power over Ethernet



What Are PoE Switches: Benefits, Applications and

In today's digital age, businesses and tech enthusiasts alike seek ways to optimize their technological systems without complicating the setup process.

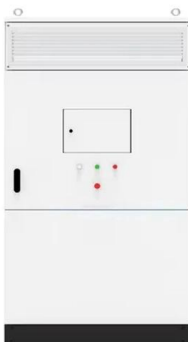


What is a poe switch and how to select it?

A Power over Ethernet switch is a network switch that has PoE functionality integrated. Learn about different types, benefits and applications of

What Are PoE Switches: Benefits, Applications and

PoE switches are particularly useful for powering devices such as IP security cameras, VoIP phones, and wireless access points, which may not have



What Is A PoE Switch And How To Choose The Right

According to the PoE power supply principle, a standard PoE switch (Active PoE switch), can identify whether the connected device needs a power



What is a PoE Switch? Power over Ethernet Explained

Discover what a PoE switch is and how it works. Learn how Power over Ethernet simplifies your network by delivering data and power over a single



Contact Us

For datasheets, pricing, or custom high-speed optical interconnect solutions, please visit:
<https://www.syropy.com.pl>