

What are the different ways to fix cable trays on the wall





Overview

There are two common ways to mount cable trays: via Wall Brackets or Ceiling Suspension. Option A: Wall Mounting (Cantilever Brackets) Drill holes into the wall at your marked support points. This guide will walk you through the key points for Cable Tray Installation and Maintenance, making sure your cable management systems are strong and. The end bracket is fixed to the shelf using the screw set included with the end bracket.



What are the different ways to fix cable trays on the wall



Reuters , Breaking International News & Views

Find latest news from every corner of the globe at Reuters , your online source for breaking international news coverage.

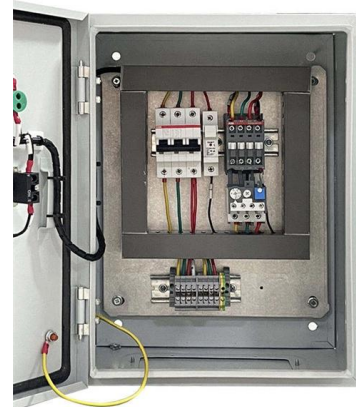


How do I mount a cable tray to the wall and floor using an end bracket

The end of the cable tray is attached to the wall or the floor with two end brackets (RÄF). The end bracket is fixed to the shelf using the screw set included with the end bracket.

Crackhead/pass.txt at master · moimikey/Crackhead ·

How to create a web form cracker in under 15 minutes. - moimikey/Crackhead



How To Install Cable Tray On Wall: A Step-By-Step Guide

Learn how to install a cable tray on a wall with this comprehensive guide. Step-by-step instructions, tools needed, and safety tips included.

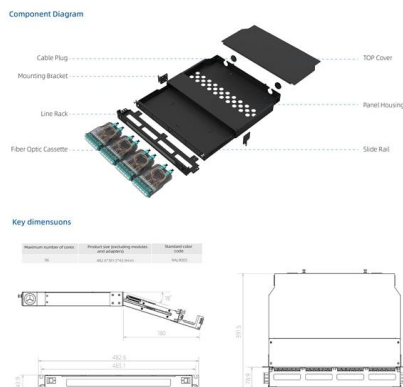


5 Steps to Learn How to Install Cable Trays

Installing a cable tray system requires careful planning to ensure it can support the weight of the cables and adheres to electrical safety codes. Here

How to install a cable tray to a wall?

Wall supports RVK are used for mounting 40 mm height KR-type cable trays to wall, mounting rails AS, ceiling supports HK1, HK2 and TP2 from the inner side of the



How to install a cable tray and wire mesh tray to a wall

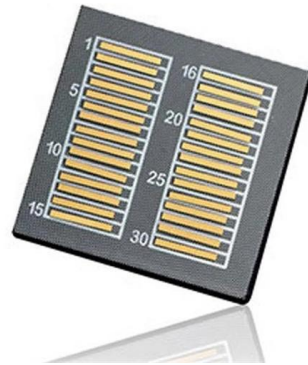
00:00 Cable tray Wall support YPK is used to attach cable ladders to walls from above. Cable trays are attached to wall support YPK with M6x30 screws and M6 nuts .more

Decoding Cable Tray Support Structures:



Tips and Insights

Discover efficient cable tray support structures for optimal cable management. Learn about hanger, wall-mounted, and Unistrut systems for safer



100+ Essential Questions Answered About Cable Trays:

Discover over 100 expert answers about cable trays, covering key topics like material selection, load capacity, installation methods, and maintenance.

Best Practice Guide to Cable Ladder and Cable Tray Systems

Cable ladder systems and cable tray systems are designed for use as supports for cables and not as enclosures giving full mechanical protection. They are not intended to be used as ladders, walk ways



5 Simplified Steps To Install a Cable Tray

By following these steps, you can ensure a safe, stable, and well-organized cable tray installation.



Mastering Cable Tray Installation , Step-by-Step Guide for a Seamless

Learn how to install cable trays correctly. Get the ultimate step-by-step guide on setting up a seamless and reliable cable management system.

MORE CASES PRESENTATIONS



DIY Installation: Mastering Light Duty Cable Tray Setup

Explore our comprehensive DIY guide to master the installation of light-duty cable trays. From planning to cable organization, follow step-by-step instructions for a tidy and efficient cable



How To Use Cable Tray Architecture To Finish A Wall?

This guide provides step-by-step instructions on installing a cable tray on a wall, covering different types of cable trays, tools needed, and safety tips.



What are Cable Trays & Different Types of Cable Trays

For managing large cable networks, you need a reliable organizational system to ensure that the power supply stays operational. One of



Ultimate Guide to Cable Tray Hanging Systems: Choice and Installation

Get to know how to select and install cable tray hanging systems. This guideline addresses the load capacity, spacing and material finishes to maintain the project safety and stability



Master Cable Tray Installation: A Professional Step-by

Learn how to install cable trays for large-scale projects with our professional, step-by-step guide covering industry standards, safety protocols,

How to install a cable tray to a wall?

The edge of the cable tray is lifted onto the straight tip of the bracket. The other edge of the cable tray is pressed into place from below. See products: <http://>



Best Fixing and Mounting Options for Cable Trays , CMW

Discover the best fixing and mounting options for cable trays and wire mesh basket trays. CMW shares tips for efficient cable management.

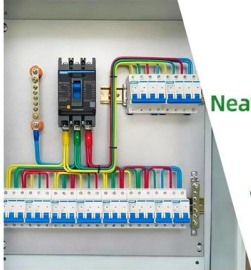


Cable Tray Installation and Maintenance Considerations

Learn about effective Cable Tray Installation and Maintenance. Get practical tips for planning, fitting, and looking after your cable trays.

DETAILS DISPLAY

Focus On Every Detail



01

Neat & Clean Layout

Cleaner arrangement of components, Easy to operate



Best practice guide to cable ladder and cable tray

Cable ladder and cable tray systems The following recommendations are intended to be a practical guide to ensure the safe and proper installation of

Cable Tray Installation

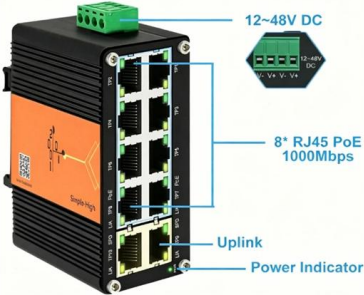
Learn everything about cable tray installation with our complete guide. Discover types, steps, and safety tips for efficient electrical cable management.



Best Practices for Installing Cables in Trays

Quick Installation Checklist (Key Steps) Cable tray cable installation generally follows these steps: Inspect cables before

10 Ports PoE Switch 12~48V DC Booster Function





Contact Us

For datasheets, pricing, or custom high-speed optical interconnect solutions, please visit:

<https://www.syropy.com.pl>