

What are the accessories included in vertical cable trays





What are the accessories included in vertical cable trays

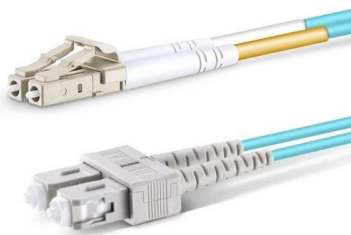
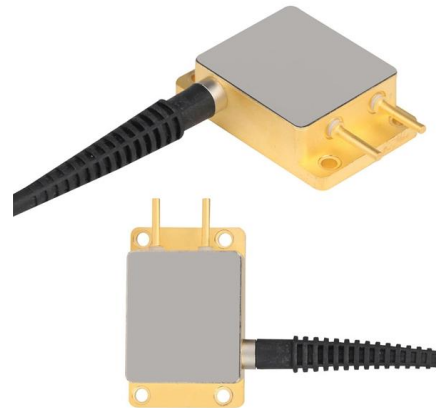


Method Statement installation of Cable Trays and Ladders

This method statement covers the site installation of the cable tray & ladders and the requirements of checks to be carried out.

Cable Tray

Tray beds are perforated at a minimum of 12%. Systems fittings are designed to be fully compatible with products lengths, adopting a 'one piece' design concept



Cable Tray Systems: Requirements and Best Practices

Standard accessories include bends, tees, crosses, reducers, vertical elbows, drop-outs, splice plates, supports, and covers. These components allow complete tray routing along complex

Cable Trays and Their Uses: Definition, Types, and

Learn about cable trays for desks, accessories, and how they compare with raceways, conduits, and trunking for efficient cable management.



Types of Cable Trays: Benefits and Uses

Different types of cable trays offer key benefits, optimizing cable management and enhancing efficiency in electrical systems.

Cable Tray in High-Rise Buildings: Vertical Cable

These cable trays have accessories like dividers that are used for segregating cables, materials to secure cables and some covers to provide extra protection.



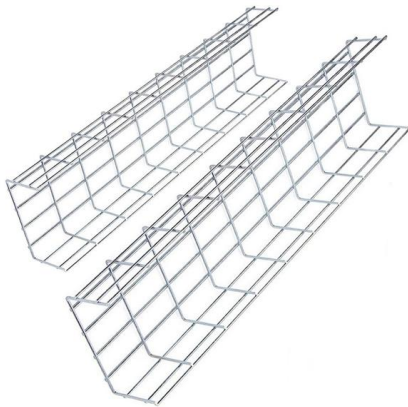
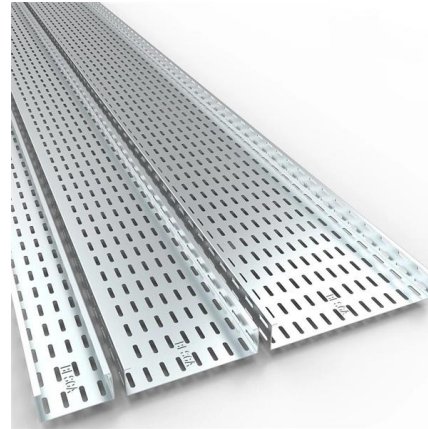
Cable Tray Ladder Trunking Wire Basket Installation

Cable trays are available in different configurations, straight sections are available to route cables in a horizontal or vertical plane. Fittings are available to route cables



cable tray system

A cable tray system is an assembly of metallic cable tray sections and accessories, that forms a rigid structural system to support cables.



What are Cable Trays? Everything you need to know

Discover everything about cable trays in industrial settings: types, benefits, installation tips, and compliance with NEC and fire resistance standards.

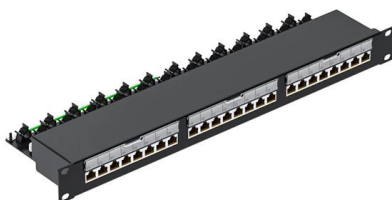
Desk Accessories Market Report: Size, Growth, Trends

Desk accessories such as organizers, trays, and cable management products help reduce clutter and support day-to-day task flow. Corporate workspace guidelines



CABLE TRAY, CABLE LADDER, CABLE TRUNKING CATALOGUE

Fitting and accessories. with the same or different width of the cable run. All fittings are available in sizes and types corresponding to the straight cable tray sections. These fittings are including: elbow,





In-rack vertical cable management

Wire Mesh Cable Trays are the right choice for high volume (structured) cabling. This sheet metal strip with an U shape has been designed to enable a toolless mount of Nexpan cable management



Cable Tray Institute

Download Our Standards Cable Tray System FAQs National Electrical Code Question: We have a customer who would like to install the majority of cable tray

A Guide to Cable Tray Accessories and Their Functions

Explore a detailed guide to cable tray accessories and understand their uses in ensuring safety, stability, and efficiency in electrical system



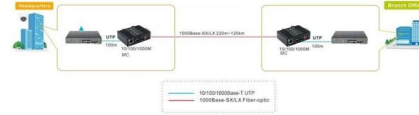
Guide to cable support systems

The systems are suspended from the ceiling with threaded rods, stand-off brackets allow raised floor mounting of cable trays, ladders and mesh cable trays. The universal systems comprise ceiling



Cable Trays and Accesories

SFSP manufactures a wide range of products capable of providing the characteristics which respond to the proposed application, along with quality of assembly, speed



GUIDE CABLE TRAYS TECHNICAL

When fitting cable trays and their accessories, the products are cut on site to create changes of direction, adjust sections, etc. Damage can also occur during handling; as a result, both the

Cable Tray Technical Guide A practical guide to product selection and

In designing supports for a cable tray system, consideration should be given to the loads associated with future cable additions and any additional loading that may be applied to the cable tray system (e.g.,



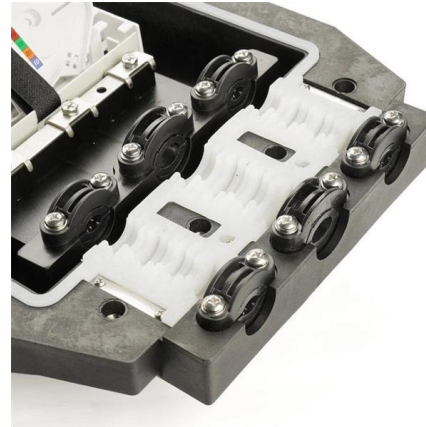
A Guide to Installing and Supporting Electrical Cable Trays

The cable tray support span must be determined based on the manufacturer's load capacity chart and the total anticipated weight of the cables. Support Methods:



What are the main components of a cable tray?

Discover the main components of a cable tray system. Learn about tray types, fittings, supports, and accessories for effective cable management.

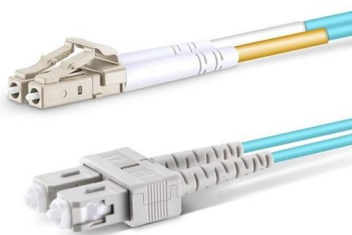


What are the main components of a cable tray?

What Are the Main Components of a Cable Tray System? The main components of a cable tray system include tray sections, fittings, supports, and

CABLE TRAY SYSTEMS GUIDE

The total load supported by the cable tray, uniformly distributed. This will be the combined weight of all of the cables or tray contents, any environmental loads (snow, ice, dust) and any concentrated static



B-Line series Cable Tray Design Considerations

As an industry leader in cable tray, Eaton offers one of the widest ranges of cable management solutions available in the market today with its B-Line series portfolio. With unmatched quality and service, we



Best Practice Guide to Cable Ladder and Cable Tray Systems

This guide covers cable ladder systems, cable tray systems, channel support systems and associated supports intended for the support and accommodation of cables and possibly other electrical



Cable Tray Today: An overview , Cable Tray Institute

This style of cable tray is available non-ventilated or ventilated, as shown in (figure D). Center supported cable trays Today, another type of cable tray is available for cable support and management. These

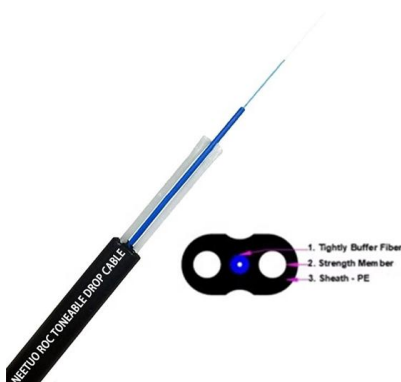
Types of Cable Trays - Purpose, Advantages,

Cable tray is alternatives to wire ways and electrical conduits, which completely enclose cables. Study types of cable trays, purpose, advantages.



CABLE TRAY SYSTEMS GUIDE

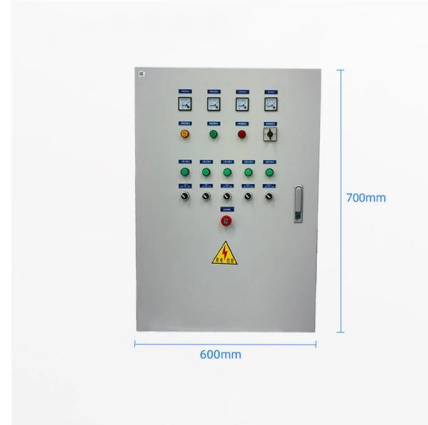
FEATURES Supports horizontal/vertical and overhead cable management Durable black or gray powder coat finish Supports UTP or fiber cabling Complete family of accessories includes: wall supports and





Cable trays (for vertical cabling)

Cable trays (for vertical cabling) Cabinet Accessories SOFT EDGE! Cannon steel cable tray provide an attractive and very durable product for exceptional, simple



Cable Tray Systems: A Complete Guide to Types

Implement Cable Management: Use accessories like cable ties, cleats, and straps within the tray to keep cables neatly organized, separated by

Contact Us

For datasheets, pricing, or custom high-speed optical interconnect solutions, please visit:
<https://www.syropy.com.pl>