

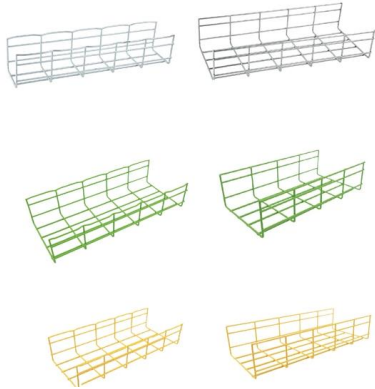
# **Weight of a 20-meter communication tower according to national standards**





## Weight of a 20-meter communication tower according to national st

---



### Communications GSM lattice tower design , 4 legged

Tower structure Design Specs 5.1 Antenna Loading 5.1.1 Square GSM Self supporting steel tower of height 20m and above: a. Installation of 9

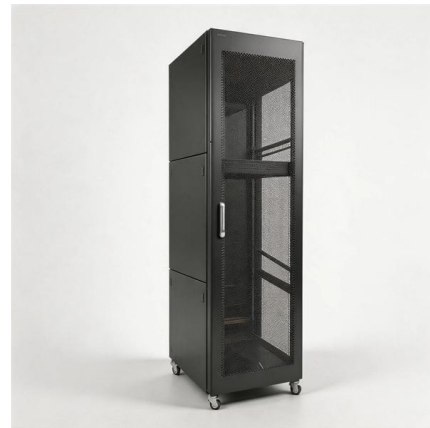


### (PDF) Design of telecommunication tower

This project focuses on the structural design and analysis of a 40-meter telecommunication tower, aimed at ensuring optimal performance and stability

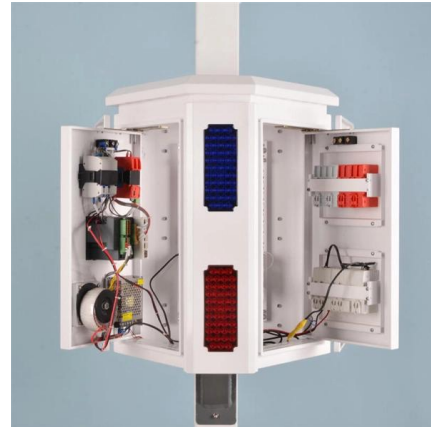
### A Comparative Study on the Calculation of Wind Load and Analysis of

The Telecommunications Industry Association (TIA) is responsible to provide recognized literature for the analysis & design of communication towers. TIA in 2005 released a standard "TIA



### Telecommunications Mast Installation Guide , PDF

This document outlines technical specifications for the installation of telecommunications masts and towers. It discusses general principles such as



### Communication Tower Design Guidelines , PDF

It covers foundation design to resist loads, standards for tower design, codes for earthquake resistance, and guidelines on tower construction. The document also



### Comparison of Weight with Tower height for different

Communication towers are generally pin jointed space frames built of steel sections for holding transmitters and receivers. In addition to self-weight, wind forces are



### Transmission Tower Weight Per Meter: 100-800kg/m Guide 2026

Transmission tower weight per meter ranges from 100kg/m (35kV) to 800kg/m (500kV). Complete guide with weight tables, steel grades, cost analysis. ISO certified data.





### Full article: Analysis of communication tower with

The main objective of this study is to provide guidelines for wind load calculation on tower body, appurtenances, and other structures and to compare



### Technical Specification of Ground Based Tower of 30,

This technical specification outlines the structural design and material



### Analysis of communication tower with different heights subjected to

Analysis of communication tower with diferent heights subjected to wind loads using TIA-222-G and TIA-222-H standards Ali Murtaza Rasool a,b, Yasser E. Ibrahim c, Mohsin Usman Qureshi d and Zafar



### How Tall Is A Communication Tower?

A communication tower, also known as a cell tower or transmission tower, is a tall structure designed to support antennas and other communication



## ANSI/TIA-222 - the design bible for towers - steps

This year, TIA is proudly celebrating the 60th anniversary of providing guidance in the structural design and fabrication of communications towers with



### Analysis and design of a telecommunication

Abstract Telecommunication lattice towers are probable the most common type of tower used for telecommunication purposes. They have many advantages like the easy on-site transport and

### Tower Design Checklist

ANSI/TIA-222-G TOWER DESIGN CHECKLIST The following information provides an overview of some of the minimum requirements necessary to assist in the



8-Port PLC Fiber Splitter Box

12-Port SC Fiber Splitter Box

Size: 235\*215\*75mm  
Material: ABS, IP65,



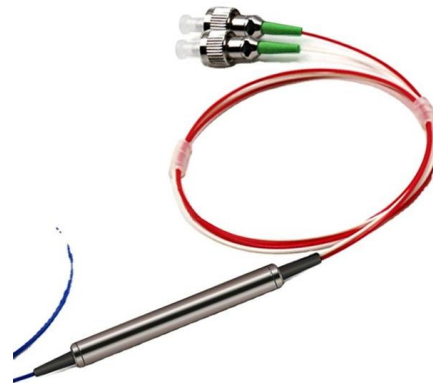
### Self-supporting Communication Tower Design

Self-supporting Communication Tower Foundation Foundation reinforcement should comply with British Standard (BS) 4449. The minimum



## 20m High Mast Tubular Steel Monopole Communication

Tower body adopt more reasonable section, which is connected through high strength bolt. It has the characteristics of easy installation and can adapt to a

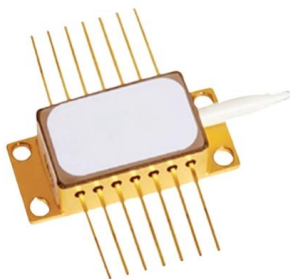


### Full article: Analysis of communication tower with

ABSTRACT Due to advancements in telecommunications, towers need special attention in terms of the analysis and design under wind loads. The

## Along Wind Response of Communication Tower

Design wind loads are calculated from the provisions given in the codes and standards. Communication towers subject to vibrations due to wind gusts, which are analyzed using the gust



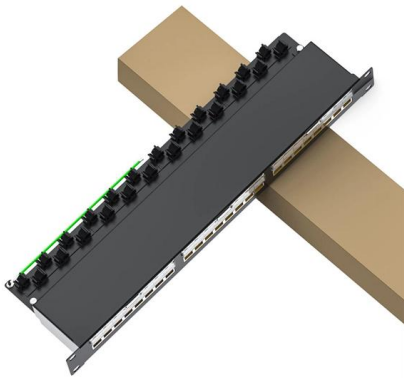
### The Typical Height Ranges for Angular Steel Telecom

Angular steel telecom towers come in various heights to meet the needs of different telecommunication applications. The height of a telecom tower



## Transmission Tower Weight Specifications

Tower Weight Details - Free download as PDF File (.pdf), Text File (.txt) or read online for free. This document provides approximate weight information for

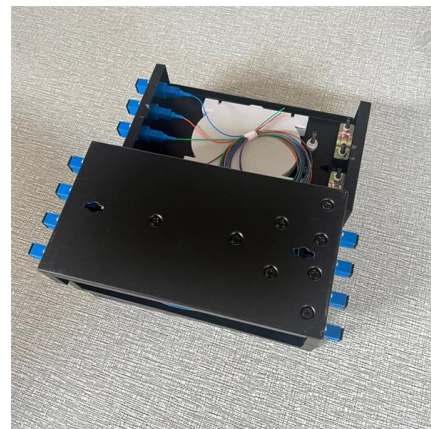


## Telecom Mast & Tower Installation Guidelines

Technical guidelines for telecommunications mast and tower installation, covering design, construction, maintenance, and environmental safety.

## Calculated Eurocode National Annex Telecom Tower:

As far as telecom towers are concerned, some calculations may be done based on the calculated Eurocode national annex telecom tower that ensures general rules



## 646-653 23. [20-662].fm

The study gives a comparative analysis of 40 m self-supporting communication tower as per TIA-222-G & TIA-222-H standards. The latest TIA-222-H standard has some additional features including



## Technical Specifications for the Installation



**of Telecoms**

Engineers must compute the weight of tower structure, weight of antenna feeders and all associated steel work then calculate effects of wind loads on total surface.



**Microsoft Word**

ABSTRACT Over the past 30 years, the growing demand for wireless and broadcast communication has spurred a dramatic increase in communication tower construction and maintenance. Failure of such

Height and Load-Bearing Capacity: The tower's height must be sufficient to provide adequate coverage for the intended area, and it should be able to support the



**Telecommunication Tower Reinforced Concrete Foundation**

Telecommunication Tower Reinforced Concrete Foundation Telecom (Telecommunications) towers are a generic description of radio masts and towers built primarily to hold telecommunications antennas.



## **Tetramast, 20m**

CUEDEE TETRAMAST is built on the modular K-system consisting of square sided frame; 2 meter high sections. Legs and diagonals are made of high grade solid



## **Contact Us**

---

For datasheets, pricing, or custom high-speed optical interconnect solutions, please visit:  
<https://www.syropy.com.pl>