

Warranty Period for Industrial-Grade Switches





Warranty Period for Industrial-Grade Switches

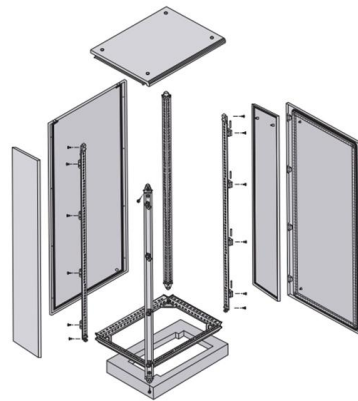


Cisco Industrial Ethernet 4000 Series Switches Data Sheet

Developed specifically to withstand the harshest industrial environments, these switches offer the most flexible and resilient industrial

Application differences between industrial-grade switches and

Industrial-grade switches are mainly used in industrial automation, intelligent manufacturing, energy monitoring and other industrial fields, and need to operate stably for a long time in extreme harsh

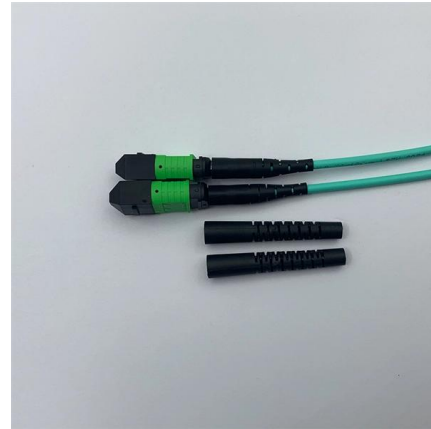


Cisco Industrial Ethernet 5000 Series Switches Data Sheet

Product overview The Cisco ® Industrial Ethernet (IE) 5000 Series Switches with four 10 Gigabit or four 1 Gigabit Ethernet uplinks and 24 Gigabit Ethernet downlinks is a rack mount,

Warranty for the Safety Switches (DG; DH; DT)

All safety switches follow the Eaton selling policy 25-000 which states the warranty is 12 months after installation or 18 months after purchase date or whichever comes first.



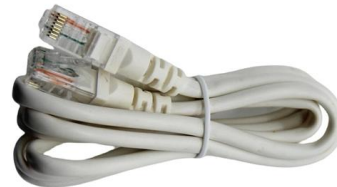
Warranties , Leviton Network Solutions

Leviton Network Solutions offers comprehensive product warranties, as well as industry leading extended full system warranties for projects installed by our Certified Contractors.



Durable Industrial Switches

D-Link's Industrial Switches have industrial-grade resilience to maintain your network uptime despite extreme hot and cold temperature variances. With Gigabit



Industrial Extra Heavy-Duty Specification Grade Switches

Industrial Extra Heavy-Duty Specification Grade Switches 15, 20 & 30A, 120/277VAC Features & Benefits High-performing chemical- and impact-resistant switches with quiet, reliable operation.



What are industrial grade switches?

Industrial grade switches, also known as industrial Ethernet switches, are ruggedized networking devices engineered to meet the unique demands of industrial applications. Unlike commercial



Hardware Warranty Information FAQ

Cisco's standard 90-day warranty is typically enough time to uncover manufacturing defects not found during the robust quality assurance processes; however, some products have

Installation Products: Warranty & Legal Policies

ABB is a global technology leader in electrification and automation, enabling a more sustainable and resource-efficient future. By connecting its engineering and digitalization expertise, ABB helps



The difference between industrial-grade switches and enterprise-grade

Industrial-grade switches and enterprise-class switches exhibit notable differences in design philosophy, structural design and durability, data transmission performance and redundancy, anti-interference





Differences Between Industrial Ethernet Switches and Co

When users are purchasing network products such as Ethernet Switches, they are often confused about whether to choose industrial-grade or commercial-grade



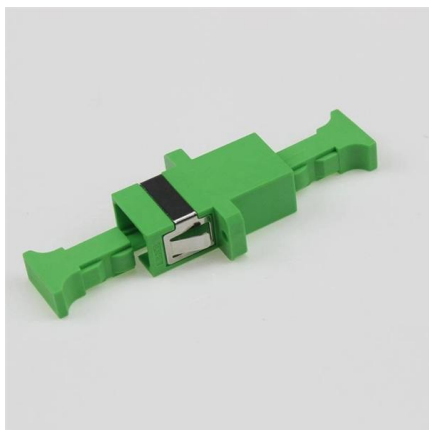
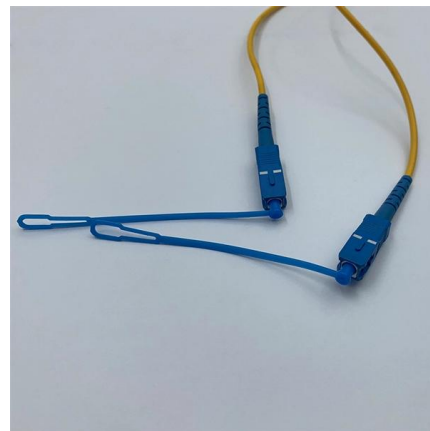
Industrial Equipment Warranty & After-Sales Service Configuration Guide

Comprehensive guide to equipment warranty terms and after-sales support options for B2B sellers. Learn industry standards, buyer expectations, and how to configure warranty and service offerings



General Terms & Warranty Period

General Terms & Warranty Period Moxa warrants its products against manufacturing defects in materials and workmanship starting from their date of shipping from Moxa's manufacturing



Understanding the Role of an Industrial Network Switch

Explore the essential role of industrial network switches in modern infrastructure. Discover unmanaged and managed Ethernet switch solutions,



HPE Aruba Networking Product Warranty Quick

A quick reference guide to provide the product specific standard warranty durations for actively sold HPE Aruba Networking products if purchased today.



General Terms & Warranty Period

However, some products may have a shorter chipset life cycle, or some parts may have a limited warranty period from the original supplier of the parts. Please contact your local sales



Industrial Ethernet Switches

All Industrial Switches and associated Power Supply Units are covered under Extreme Networks' product warranty policy. Universal switches are covered for a period of 5 years and Power Supply



Industrial Ethernet Switches , EtherWAN

Industrial Ethernet switches offer advanced management features with the redundancy and security elements required for essential applications. EtherWAN's lineup includes unmanaged, managed,



The Warranty Policy

The Warranty Policy is based on five values: The commitment of all Schneider Electric entities to replace or repair defective products for customers free of charge, without delay and during a specific period



SCHNEIDER ELECTRIC STANDARD LIMITED WARRANTY

2. Warranty Coverage If a product becomes defective within the Schneider Electric limited warranty period, one of the following options, as selected by Schneider Electric, will be performed at no charge



Clarification Needed on Cisco Catalyst Switches Warranty : r

We recently acquired 20 Cisco Catalyst 9300 series switches and I'm trying to ensure I fully understand the warranty and support terms that come with them, as well as how to verify these details online.



What is the IP rating for industrial switches?

6. Conclusion The IP rating is a critical factor when selecting industrial switches, ensuring that they can operate reliably in challenging environments. Higher IP





support dustry.siemens

Subject to the fair use policy described in article 3, and in compliance with the warranty procedure and conditions described in article 4, Siemens will provide Warranty Services at Siemens' cost during the



Industrial Ethernet Switches: Benefits, Applications

Discover what industrial grade Ethernet switches are, their unique features, real-world applications, key differences from regular switches, and

Comparison of Warranty Period and Services for Ethernet Switches

Comparison of Warranty Period and Services for Ethernet Switch: How Much Difference Is There Between a 3-Year and a 5-Year Warranty? In today's era of rapid development in the industrial



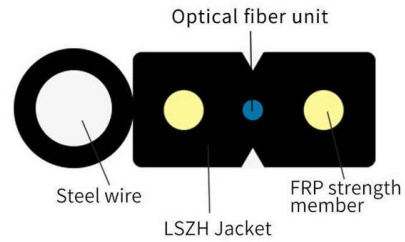
The difference between industrial-grade switches and ordinary switches

In addition, industrial-grade switches also support ring redundancy technology, which can automatically switch to a backup link when a part of the network fails, ensuring network availability. These features



Comparison of Warranty Period and Services for Ethernet Switches

Commercial switches typically come with a 3-year warranty, while Ethernet switches generally offer a 5-year warranty. The longer warranty period not only reflects confidence in product quality but also



Durable Industrial Switches

With their strong build, the whole family of DIS industrial switches are certified against vibration, shock and free-fall. We're so confident in the quality of their

TERMS AND CONDITIONS

1.6.4. Warranty do not cover damages from system short circuit, normal wear, environmental corrosive gases at G3 level or above, or environmental corrosive gases at 3C3 level or above.



Contact Us

For datasheets, pricing, or custom high-speed optical interconnect solutions, please visit:
<https://www.syropy.com.pl>