

# **Vertical Shaft Internal Cable Tray**





## Vertical Shaft Internal Cable Tray

---

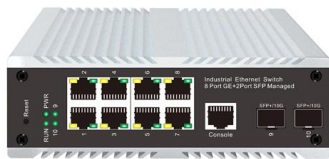
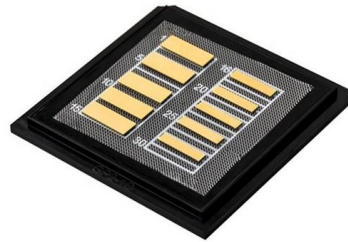


### Cableizer

Cable pulling in vertical shafts is very dangerous and we strongly advise you to get professional help from an installation projects company with references in similar projects.

### Types of Cable Trays - Purpose, Advantages,

Cable tray is alternatives to wire ways and electrical conduits, which completely enclose cables. Study types of cable trays, purpose, advantages.



### Understanding Cable Pathways, Cable Conduits, Cable

A cable pathway or raceway is a protective channel or enclosure made of materials like metal or plastic, used to manage and safeguard electrical cables and wires. It

### Types of Cable Trays - Advantages, Applications and Sizes

Explore the types of cable trays, their advantages, applications, and standard sizes. Learn how they improve cable management and support various industries.

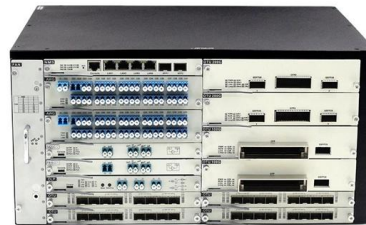


### **B-Line series Cable Tray Design Considerations**

Our wind certification report provides you with list of acceptable B-Line series cable tray supports, fittings and covers based off of the environmental conditions, cable loading, and type of cable tray in your

### **GUIDE CABLE TRAYS TECHNICAL**

NEMA VE 1-2017 Specifies requirements for metal cable trays and associated fittings designed for use in accordance with the rules of Canadian Electrical Code, Part I and the National Electrical Code®



### **Cable Tray Technical Guide A practical guide to product selection and**

Cable tray is considered to be a system. It must provide continuous support for cables, and the electrical continuity of the cable tray system must be maintained.

### **What is a Vertical Cable Tray?**

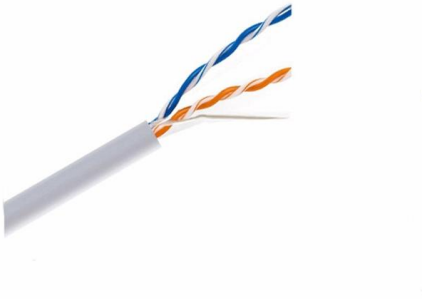


A Vertical Cable Tray is a specialized support system designed to carry electrical and data cables securely in a vertical or riser direction. Think of it



### **Custom Engineered Electrical Wire, Assemblies & Cable Solutions**

Hier sollte eine Beschreibung angezeigt werden, diese Seite lässt dies jedoch nicht zu.



### **CABLE MANAGEMENT SYSTEMS CABLE TRAYS & ACCESSORIES**

We manufacture a wide range of products capable of providing the characteristics which respond to the proposed application, along with quality of assembly, speed of installation, and cost-saving cable trays.



### **Cable Tray Technical Guide A practical guide to product selection and**

Cable Tray Technical Guide A practical guide to product selection and installation This guide for engineers and installers has been developed by ABB as a practical reference regarding cable tray



## Cable Trays

Bahra Electric Cable Trays are an essential component of any well-designed electrical infrastructure, providing a safe, organized, and easily accessible



8-Port PLC Fiber Splitter Box

12-Port SC Fiber Splitter Box

Size: 235\*215\*75mm  
Material: ABS, IP65,



## Free download! Cable Tray Riser Inside

Cable Tray Riser Inside- RSD Vertical 90° inside Riser for Niedax Cable Tray. The Niedax Cable Tray is an extremely versatile and cost effective solution for your

## Vertical Shaft Cable Tray And Trunking

The vertical shaft cable tray adopts lightweight design, considerably reducing improvement costs, minimizing vertical shaft loads, and possessing terrific



## Internal Riser Cable Tray

An Internal Riser Cable Tray is a type of cable management system specifically designed to route and support cables in the vertical spaces (or risers) within



## Vertical cable tray

Types of Vertical Cable Trays: A Comprehensive Guide Vertical cable trays are essential components in modern electrical infrastructure, designed to organize, support, and protect cables in multi-level



### Vertical Cable Tray (up to 47U) - Metal - Model 01

Briticom® Vertical Metal Cable Tray are regularly used to manage cabling inside a data rack, the ventilated tray has an imprint profile of various size

## Best Practice Guide to Cable Ladder and Cable Tray Systems

This guide covers cable ladder systems, cable tray systems, channel support systems and associated supports intended for the support and accommodation of cables and possibly other electrical



### GUIDE CABLE TRAYS TECHNICAL

In accordance with its continuous improvement policy, Legrand reserves the right to change the specifications and illustrations without notice. All illustrations, descriptions and technical information



### Vertical Internal Elbow Cable Tray

Vertical Internal Elbow Cable Tray Categories:  
Cable support systems, Cable tray systems



### Cable Trays and Support Systems - Vashi Integrated

At Vashi Integrated Solutions, we provide strong and reliable cable trays and support systems to help you manage wires and cables easily. Our trays are perfect for

### Cable Trays

Bahra Electric Cable Trays offer numerous benefits, including: Improved Safety: By containing and securing cables, cable trays help prevent tangles, tripping



### CABLE TRAY INSTITUTE

The Cable Tray Institute (CTI) was founded in 1991 to support the cable tray industry by engaging in research, development, education, and the dissemination of



## VERTICAL BEND in PERFORATED CABLE TRAY by Fixotech

2. Outward and Inward: Vertical bends can be divided into two groups according to the way they bend in relation to the orientation of the cable tray. - Outward Bend: This kind of bend directs wires outward



## Cable Tray in High-Rise Buildings: Vertical Cable

Rack cable management (RCM) is a rack where all cables are arranged together. There are several types of cable management solutions -- horizontal cable

## Cable Tray Technical Guide A practical guide to product selection and

A practical guide to product selection and installation This guide for engineers and installers has been developed by ABB as a practical reference regarding cable tray characteristics, installation, and



## Contact Us

For datasheets, pricing, or custom high-speed optical interconnect solutions, please visit:

<https://www.syropy.com.pl>