

# **Vertical Shaft Cable Tray Parallel Tee**





## Vertical Shaft Cable Tray Parallel Tee

---

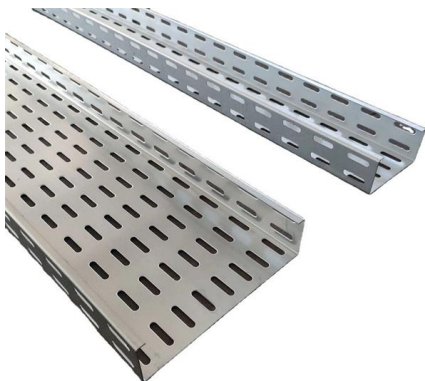


### **AUF409LVTU48 , Tee for cable tray , T& B Cable Tray , Wire & Cable**

Catalog No. : AUF409LVTU48 Description: AL FIT 4IN 9W LAD VERT T UP 48R UPC: 626490627659 Aluminum U-style fitting 4 inches side rail height 9 inches width ladder vertical tee up 48 inches radius

### **Trof Vertical Tee, UP**

Cope Trof Vertical Tee offers durable, space-saving cable tray fitting for secure installations.



### **Verticals Cable Tray Management Solutions , Cable**

Hutaib Electricals, a trusted cable tray manufacturer in India, offers vertical cable management solutions for high-rise buildings. Their basket cable trays and wire

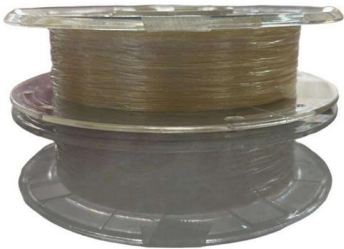
### **Ladder Type Cable Tray Tee , Pratik Cabletray System**

A ladder type cable tray tee is a fitting used to create a branch in a cable tray system, allowing cables to be routed in three directions. Its "T" shape provides a secure



### **I-BEAM Ladder Vertical Tee Up**

Cope I-BEAM fittings for cable trays. Reliable vertical tee up design for secure NEMA cable tray connections.



### **Best Practice Guide to Cable Ladder and Cable Tray Systems**

This guide covers cable ladder systems, cable tray systems, channel support systems and associated supports intended for the support and accommodation of cables and possibly other electrical



### **Vertical Tee Cable Tray**

We manufacture vertical tee Cable tray which is simple and stylish with straight vertical sides, even it has curved surface on two sides.They are available in





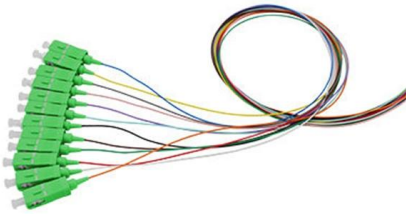
**AHF536SVTU36 , Tee for cable tray , T& B Cable Tray , Wire & Cable**

Catalog No. : AHF536SVTU36 Description: AL FIT 5IN 36W SOL VERT T UP 36R UPC: 626490377929 Made or assembled in Canada.



**Vertical Tees , Cable Tray Systems , Power Utility**

Discover our Vertical Tees for cable tray systems. Contact us today for availabilities and receive a quote. Fast shipping for just in time delivery!



**CABLE TRAY**

Cables may be fastened to the cable tray by means of cable clamps or cable ties (See Figures 5.7 and 5.8). Generally, cables are fastened every 450 mm (18 in.) on vertical runs.



**I-BEAM Ladder Vertical Tee Down**

Quality vertical tee down fitting for I-BEAM ladder trays. Compatible with NEMA cable tray classes 12B, 12C, 20A, 20B, 20C, and more.





## CABLE MANAGEMENT SYSTEMS CABLE TRAYS & ACCESSORIES

We manufacture a wide range of products capable of providing the characteristics which respond to the proposed application, along with quality of assembly, speed of installation, and cost-saving cable trays.

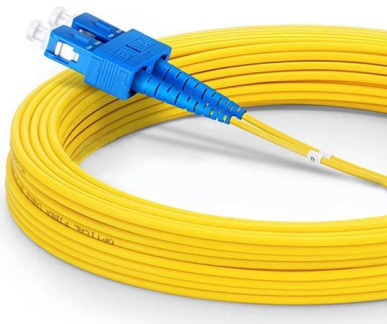


## CABLE TRAY INSTITUTE

The Cable Tray Institute (CTI) was founded in 1991 to support the cable tray industry by engaging in research, development, education, and the dissemination of

## Fiberglass Cable Tray Vertical Tee, Down

Compact fiberglass vertical tee fitting for cable tray systems. Pre-drilled, customizable, easy cable pulling.



## Steel Ladder Tray Tee Vertical Fittings , Ladder Trays , Cable Tray

Vertical tee fittings connect cable trays in three directions with 4"-7" rails, 6"-36" widths, and a 24" radius. Review specifications for system compatibility.



## How to Install Cable Tray: A Comprehensive Guide to Different Cable

Welcome to our step-by-step guide on installing cable trays! In this video, we'll explore the different types of cable trays available and provide detailed instructions for their installation.



### Cable Tray Accessories

To facilitate easy installation of cable trays we also manufacture accessories e.g. Vertical bend, horizontal bend, cross and horizontal tee. Our range includes

### Vantrunk Cable Tray Vertical Tees - Vantrunk

Manufactured to complement the range of standard Cable Tray fittings, the Vertical Tee provides added flexibility to your installation. Available in Ascent, Descent



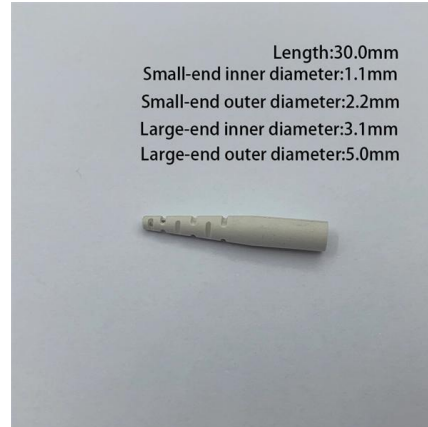
### Cable Crossovers & Tees For Cable Trays , Metsec

We offer a range of cable crossovers and tees, available in both equal and unequal measures, for light, medium, and heavy duty cable tray systems in widths of



### Vertical cable tray

Buy low-price vertical cable tray with customizable options starting at \$0.95 per unit. Available in various materials, ideal for solar cable management and industrial use.

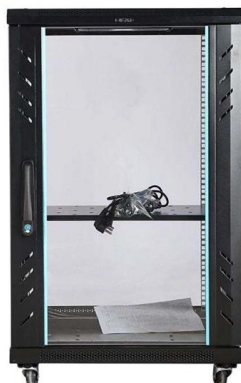


### Equal Tee - Vantrunk

Equal Tees (ET) are designed to create perpendicular coplanar connections between horizontal cable runs (ladder installed in horizontal plane) and between vertical

### Speedway Vertical Tee - Vantrunk

Product Categories Speedway Cable Ladder I-Beam Cable Ladder Cable Tray Steel Framing Mounting Frame Lighting Brackets Fixings Design Solutions All REF:



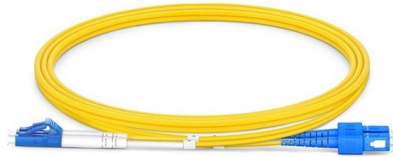
### Document DICOS

A channel cable tray can be added to an existing cable tray system using the method illustrated in Figure 3-89 to add approved cabling systems. Refer to the loading information of the existing cable



## Vertical Tee Up

vertical tee up is a product of bestray It belongs to the cable tray product line We are committed to the quality of our products when



## What is a Vertical Cable Tray?

What is a vertical cable tray? This guide explains its types (ladder, solid-bottom), benefits for safety & organization, and key applications in data

## Contact Us

---

For datasheets, pricing, or custom high-speed optical interconnect solutions, please visit:  
<https://www.syropy.com.pl>