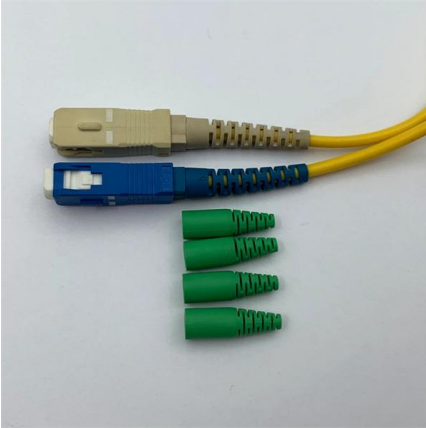


Using a beam splitter in surveillance





Using a beam splitter in surveillance

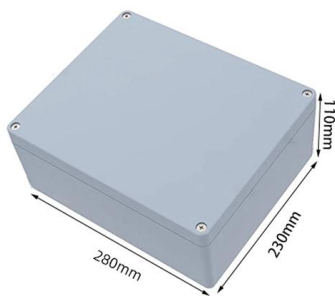


Beam Splitters & Their Applications: Your Ultimate Guide

A beam splitter is an instrument that splits a light beam into two or more beams. In this blog post, we will discuss about beam splitters and their

Beam Splitter , Precision, Applications & Design Principles

Explore the precision, applications, and design principles of beam splitters, essential for advancements in scientific research and technology.



Beamsplitters Selection Guide For Optical Applications

This beamsplitter guide highlights the functionality, form factor, role and key considerations when selecting beamsplitters for optical applications.

Beam Splitters: Types and Applications

Beam splitters find their application in a diverse array of fields, from teleprompters to robotics, impacting various technologies we rely on daily. These unassuming



How Does a Beam Splitter Work in Optical Applications?

A beam splitter divides a light beam into two or more paths, crucial for optical devices like microscopes and interferometers.



Beam splitters

Advanced research often explores specialized beam splitters for use in cutting-edge applications like laser systems, quantum optics, interferometry, and imaging systems. There's significant focus on



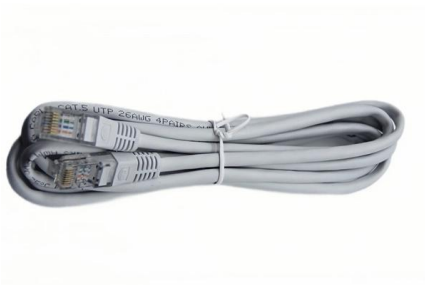
What Are Optical Beamsplitters? , Plate, Cube & Dichroic Types

In this article, we will answer these questions: what is a beam splitter, what are the common types of beam splitters, and how does a beam splitter work in various devices.



Beam splitter , Description, Example & Application

A beam splitter is an optical device that splits a single beam of light into two or more beams. It is commonly used in scientific and industrial applications.



Covering the Basics of Beamsplitters -- Firebird Optics

Polarizing Beamsplitter While standard non-polarizing beamsplitters divide light by wavelength, a polarizing beamsplitter will split the incident beam

Introduction To Splitters , Teledyne Vision Solutions

A beam splitter is an optical device that splits beams (such as laser beams) into two (or more) beams. Beam splitters typically come in the form of a reflective device



Photonics 101

The pipe beam splitter is sometimes referred to as a beam displacer. This is because when using the pipe beam splitter it is possible to displace the output beams from each other by the



Beam Splitters: Types, Applications, and Selection

Metasurface-based beam splitters are highly efficient, compact, and can operate over a wide range of wavelengths. They have the potential to replace



How Beamsplitters Work: Types, Mechanisms, and

This article explains the working principles of beamsplitters, detailing how they divide a beam of light into two separate paths, the different types of

Unveiling the Secrets of Beam Splitters in Surveillance #shorts

AT& T Room 641A: Discover how beam splitters play a crucial role in digital surveillance, allowing for the duplication of data streams. This clip dives into t



Understanding Beamsplitters: Types, Principles, and

They eradicate the ghosting phenomenon because the transmitted beam is consistent with the incident light beam. A cube beam splitter has a



How Do Optical Beam Splitters Work & Applications

Optical beam splitters are important components across multiple optical systems since they serve applications throughout telecommunications and



What Is a Beam Splitter and How Does It Work?

Pellicle Beam Splitter The Pellicle Beam Splitter uses an extremely thin membrane of optical film stretched over a frame. Because the film is only a few micrometers thick, this design

Transmission and Reflection by Beamsplitters

In addition to the task of dividing light, beamsplitters can be employed to recombine two separate light beams or images into a single path. This interactive tutorial



Exploring Beam Splitters: Types and Applications

What Is a Beam Splitter? Working Principles, Types, and Applications Beam splitters play a critical role in modern optical technology, powering devices from teleprompters and holographic displays to fiber

How Beamsplitters Work: Types, Mechanisms, and



Beamsplitters' ability to separate or combine two sources of light with precise R/T ratios makes them ideally suited to a number of technological

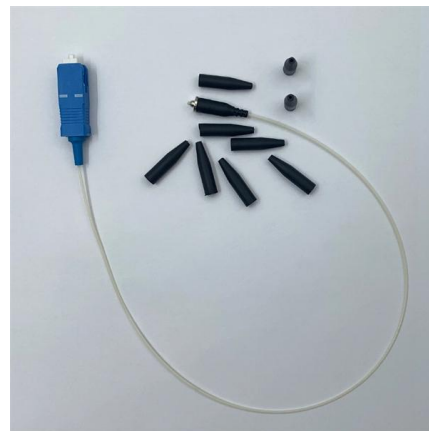


All You Need to Know About Beam Splitters

In real-world use cases, beam splitters are the underdogs of fiber optic telecommunications, guaranteeing efficient high-speed internet connections.

What Are Optical Beam Splitters?

What Are Optical Beam Splitters? Key Takeaways Beam splitters, essential for applications such as teleprompters and holograms, have different types that play



The Buyer's Guide to Beam Splitters , Blue Ridge Optics

Matching the beam splitter's specifications to the characteristics of the light source ensures optimal performance. This minimizes light losses and aberrations while maintaining the



How Does a Beamsplitter Work? , Cube vs. Plate Comparisons

These beamsplitters eliminate ghosting because the transmitted beam is coherent with the incident light beam. A cube beam splitter has a significant advantage over a plate beamsplitter because ghost



Optical Beam Splitters: Examination of Designs and Applications in

Adaptive beam splitters hold great potential for use in applications requiring real-time adjustment and fine-tuning of light beams, such as in adaptive optics and telecommunications. Research and

Beam splitter

A beam splitter or beamsplitter is an optical device that splits a beam of light into a transmitted and a reflected beam. It is a crucial part of many optical experimental



High-quality ceramic ferrule



Introduction To Splitters , Teledyne Vision Solutions

Introduction To Splitters Introduction Early microscopes were essentially a tube through which light travels (Figure 1A), from a sample to the eye (or a camera),



Beam Splitter

A beam splitter is then used to pick off a small portion (2-10%) of the beam to sample the profile before passing the energy across two additional beam-turning mirrors and into a focusing lens.



Contact Us

For datasheets, pricing, or custom high-speed optical interconnect solutions, please visit:
<https://www.syropy.com.pl>