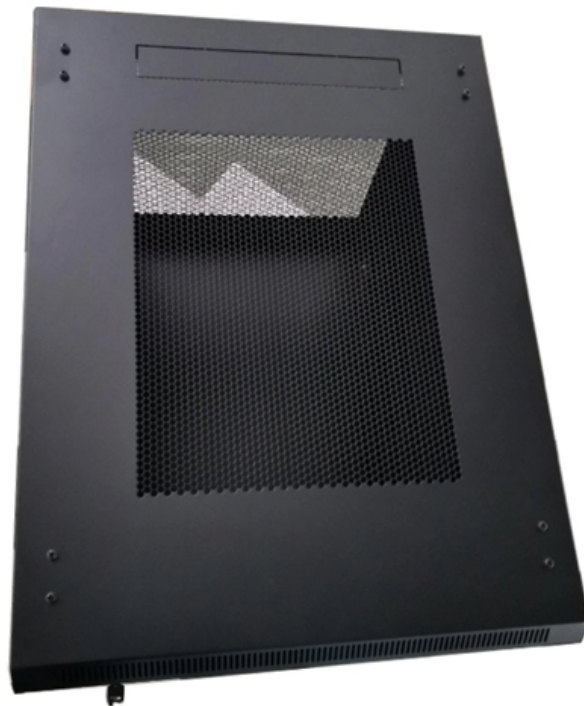


Usage distance of the third-level distribution box





Usage distance of the third-level distribution box



What is the Ideal Installation Height for a Distribution Box

Install a distribution box at 4.5 to 5.5 feet high for safety, accessibility, and compliance. This height ensures easy use and protection from hazards.

Safety requirements of distribution box

The distribution box has the characteristics of small size, simple installation, special technical performance, fixed location, unique configuration function, not limited by



How to determine the size, installation method and

9) The wood brick and iron parts needed for the installation of the distribution board need to be buried in advance, and the exposed distribution box should be fixed

Spacing Requirements for Power Distribution and Terminal Blocks

Power Distribution blocks are evaluated to UL1953, the Power Distribution Block standard and are listed for general installation, meaning they have adequate spacing for most OEM and field applications.



Electrical Distribution Fundamentals Design Guide Data Bulletin

The utilization voltage of equipment can be accomplished with various distribution system voltages. Typical considerations include utility connections, rate tariffs, distances to loads, costs and



three-level distribution system_switchgear_Switchboard_circuit

Generally, the first-level distribution box is required to be installed in a place with a relatively high terrain, dry and ventilated, and the second-level and third-level distribution boxes should be as close as



A complete guide to box plots

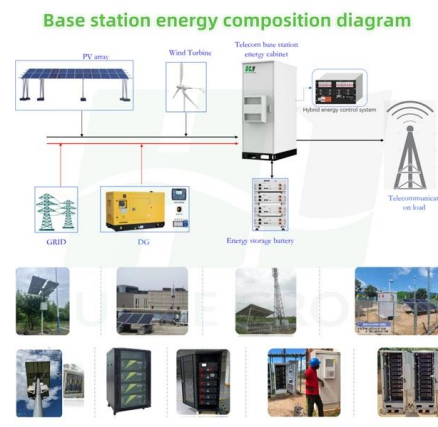
When you should use a box plot Box plots are used to show distributions of numeric data values, especially when you want to compare them between multiple





The difference between the first, second, and third levels of

Generally, first level distribution does not allow direct use of electrical equipment, and second level distribution will be by power equipment because it is three-phase electricity, while third

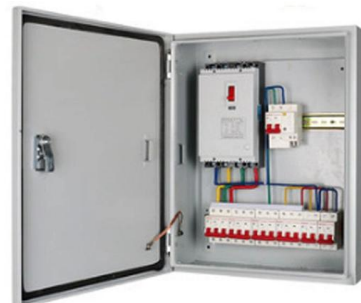


The Meaning and Function of Primary, Secondary, and Tertiary

Summary of Three-Tier Power Distribution System: Primary: The main distribution panel, supplies power from the transformer. Secondary: Intermediate panel, routes power to buildings or zones. Tertiary:

Distribution boards components

Distribution boards (generally only one in residential premises) usually include the meter (s) and in some cases (notably where the supply utilities impose a TT earthing system and/or tariff



How many distance from ground when install distribution box

The total distribution box and switch box should be equipped with leakage protector, and the distance between distribution box and switch box, switch box and electrical equipment should



directory-list-2.4.txt/directory-list-2.4.txt at main

Customer stories Events & webinars Ebooks & reports Business insights GitHub Skills

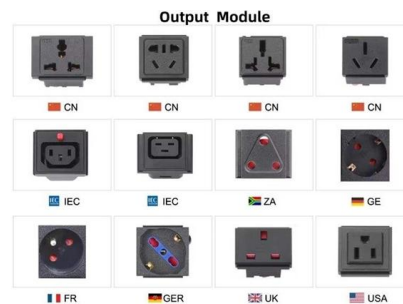


The Complete Guide to Distribution Box: Installation, Types & More

Distribution boxes should receive visual inspections monthly and comprehensive professional inspections annually. High-usage commercial and industrial installations may require

SECTION 9: ELECTRICAL POWER DISTRIBUTION

Utilities may have some control over and access to the energy stored in electric vehicles attached to the grid.



Why Choose Us

- 20 Years of OEM/ODM**: 20 years factory manufacturing experience.
- Professional R & D team**: 10 years appearance/terminal/electronic engineer.
- Fully Certified**: Our are certified CE, FCC, RoHS, ISO9001, ISO14001.
- Timely Delivery**: 22 production lines, 500+ employees, timely delivery guaranteed.
- Quality Assurance**: Professional QC team with full process inspection.
- After-sales service**: After-Sales Service for Customer Satisfaction.



Size determination, installation method and wiring mode

The distribution box is the central hub of the home circuit and the general control of our daily power consumption. It is an indispensable electrical equipment. If there



UFC 3-550-01 Exterior Electrical Power Distribution, with Change 3

Use solid wood poles for electric distribution lines. Concrete or steel poles may be justified for medium-voltage distribution circuits where wood poles do not provide adequate strength, or where climatic



Usage, Principle, And Classification of Low Voltage Distribution Box

Low-voltage distribution boxes for power, lighting, and motors They are mostly enclosed and vertically installed, with different levels of protection depending on the application.



Electric power distribution

A 50 kVA pole-mounted distribution transformer Electric power distribution is the final stage in the delivery of electricity. Electricity is carried from the transmission



Low-voltage distribution networks

In cities and large towns, standardized LV distribution cables form a network through link boxes. Some links are removed, so that each (fused) distributor leaving a substation forms a





Cable Distribution Box Layout: 10 Industrial Strategies

Specify Voltage and Protection Requirements
Voltage level: Industrial facilities often use multiple voltage levels (such as 1kV, 10kV, 400V), and it is necessary to ensure that the cable



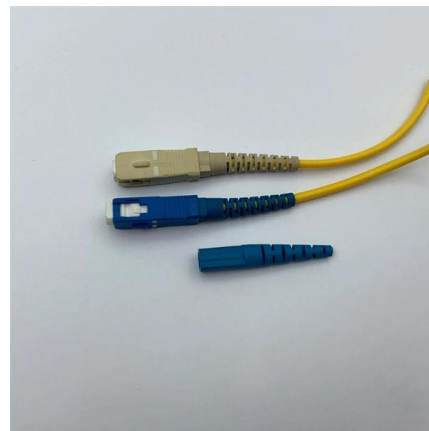
Cable Distribution Box Layout: 10 Industrial Strategies

At least 1 meter of space should be reserved around the box to facilitate inspection, maintenance, and component replacement. The cable trunking box adopts a removable panel and



Three Phase Distribution Box Functions and

A three phase distribution box safely distributes and protects power for large equipment in factories, buildings, and high-demand commercial settings.



Detailed introduction of safety requirements for distribution box

Safety control requirements for distribution box:
1. The low-voltage power supply system at the construction site shall be equipped with a general distribution box, a distribution box and a





Ordering information

NO.	1	2	3	4
Model	P3401	P3502	P31203	P31804
Product name	Patch Panel	Patch Panel	Patch Panel	Patch Panel
Illustration				
HU	1	2	3	4
Maximum number of cores	96	192	288	384
Product size (including mounting modules and adapters)	482.0*288.7*43.7mm	482.0*288.7*88.0mm	482.0*288.7*132.3mm	482.0*288.7*177.0mm
Standard color code	RAL9005	RAL9005	RAL9005	RAL9005



What is Level 1, Level 2 and Level 3 distribution box

Three level protection refers to: on-site construction of electricity must be done in the general distribution box, distribution box and switch box to install leakage protection.

Power Distribution Boxes Explained Simply

Discover the essentials of a Power Distribution Box--how it works, key types, benefits, and tips to ensure safe, efficient electrical power management.



Contact Us

For datasheets, pricing, or custom high-speed optical interconnect solutions, please visit: <https://www.syropy.com.pl>