

Understanding Electrical Distribution Boxes





Overview

Distribution boxes, or electrical junction boxes as they are sometimes called, play a vital role in electrical systems. Whether you're a homeowner looking to understand your electrical setup, an electrician seeking comprehensive guidance, or a facility manager planning an upgrade, understanding distribution boxes is vital for electrical safety and efficiency. It houses protective devices such as circuit breakers or fuses, ensuring both equipment protection and user safety. It protects circuits, manages power distribution, and ensures reliable operation.



Understanding Electrical Distribution Boxes

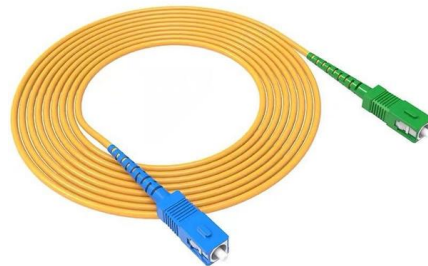


Understanding Distribution Boards: Your Essential Guide to Electrical

Understanding Distribution Boards: Your Essential Guide to Electrical Efficiency and Safety
In today's fast-paced world, understanding your home's electrical system is more crucial than

The Importance of Distribution Boxes in Electrical Systems

Learn more about how distribution boxes play a critical role in the safe and efficient operation of electrical systems.



A comprehensive understanding of distribution box

? Introduction Distribution boxes are at the heart of safe and organized electrical systems--whether in residential, commercial, or industrial settings. But

Distribution Boxes Explained: Types, Functions, and

Learn about distribution boxes, their types, functions, and safety features to ensure efficient and secure electrical power distribution in any building.



Ultimate Guide To Distribution Boxes Db Boxes Types

This ultimate guide explains what a distribution box does, its internal components, common types, real-world applications, and how to select the right DB Box for



Electrical Distribution Box: Complete Panel Types Guide

Learn what an electrical distribution box is in simple terms. Complete guide to panel types, NEC 408 requirements, and applications for home and



What is an Electrical Distribution Box? A

Discover everything you need to know about electrical distribution box! Learn about types, components, and how to choose.





What Is a Distribution Box?

With replaceable receptacles, distribution boxes are versatile. You can customize them to match your electrical application. Some distribution boxes



Understanding Distribution Boxes: Your Guide to Power Distribution

Understanding the Functionality of Electrical Distribution Box Systems - This article explores the features, safety considerations, and applications of electrical distribution boxes.



Electrical Control Panels & Distribution Boxes: Sizes,

This guide explores control panels, electrical boxes, breaker panels, bus bars, junction boxes, and custom enclosures to help you understand their



What is the Function of a Distribution Box in Electrical Systems

Understand the function of the distribution box in electrical systems and how it ensures safe and efficient power distribution.





Power Distribution Boxes Explained Simply

Whether you're a homeowner, an electrician, or simply interested, this article will provide a straightforward and easy-to-understand explanation.



What is a Distribution Box? - A Comprehensive Guide

So, what is a distribution box? It organizes and controls power flow, ensuring safety and efficiency. By managing circuits individually, it prevents

Understanding Distribution Boxes: A Comprehensive Guide

A distribution box is a vital piece of equipment that ensures the effective and safe distribution of electrical power in various parts within a building



How Does a Power Distribution Box Work

Learn how a power distribution box works step by step--from incoming power to circuit protection and smart monitoring--for safe, efficient electricity delivery.



Complete Guide For Distribution Boxes Types

Distribution boxes, also known as electrical distribution boards or panels, are pivotal components in electrical systems, ensuring the safe and organized distribution of



what is a Distribution Box

In electrical systems, a distribution box, also known as a breaker box or distribution board, plays a critical role in managing and distributing electrical

Distribution Boards

Distribution boards, often referred to as electrical panels or breaker boxes, serve as the nerve center of any electrical system. Here we explore the crucial parts of a distribution board and gain insights into



Comprehensive Understanding of Distribution Box - Expert in Electrical

A distribution box helps manage electricity in homes or workplaces. It makes sure power flows safely and efficiently to devices. Let's look at its main jobs. Power distribution and circuit management The



Understanding Distribution Boxes:A Comprehensive Guide

Understanding its significance, this article covers what a distribution box is, how it functions, its structure, the various types available, and how it

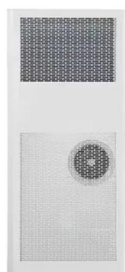


Electric power distribution

A 50 kVA pole-mounted distribution transformer Electric power distribution is the final stage in the delivery of electricity. Electricity is carried from the transmission

What is a Distribution Box? - A Comprehensive Guide

Whether in homes, offices, or industries, its importance cannot be overstated. Understanding the Basics of a Distribution Box A electrical distribution



Distribution Box Guide: Types, Components & Solutions

Understand distribution boxes (DB boxes) in 5 minutes. Learn about types, components, functions, and uses. Find the perfect DB box for your needs.



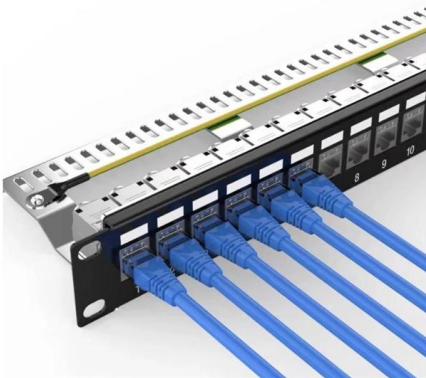
The Complete Guide to Distribution Box: Installation, Types & More

Understanding their components, installation requirements, and maintenance needs helps you make informed decisions that protect your property and ensure long-term electrical reliability.



A Step-by-Step Guide to Wiring an Electrical Panel Box

A Step-by-Step Guide to Wiring an Electrical Panel Box An electrical panel box, also known as a breaker box or a distribution board, is a crucial component of any



Understanding Electrical DB Boxes: Your Ultimate Guide to Safety

Its primary function is to distribute electrical power from a single source to various circuits within a building. By housing circuit breakers or fuses, the DB box acts as the central hub for managing



The Complete Guide to Distribution Box: Installation, Types & More

Understanding the key components of a distribution box helps you make informed decisions about installation and maintenance. Each element plays a specific role in ensuring safe



Understanding Distribution Boxes: A



Comprehensive Guide

Learn what a distribution box is, its types, and how to choose the right one for your project. Includes clear examples and expert tips.



Contact Us

For datasheets, pricing, or custom high-speed optical interconnect solutions, please visit:

<https://www.syropy.com.pl>