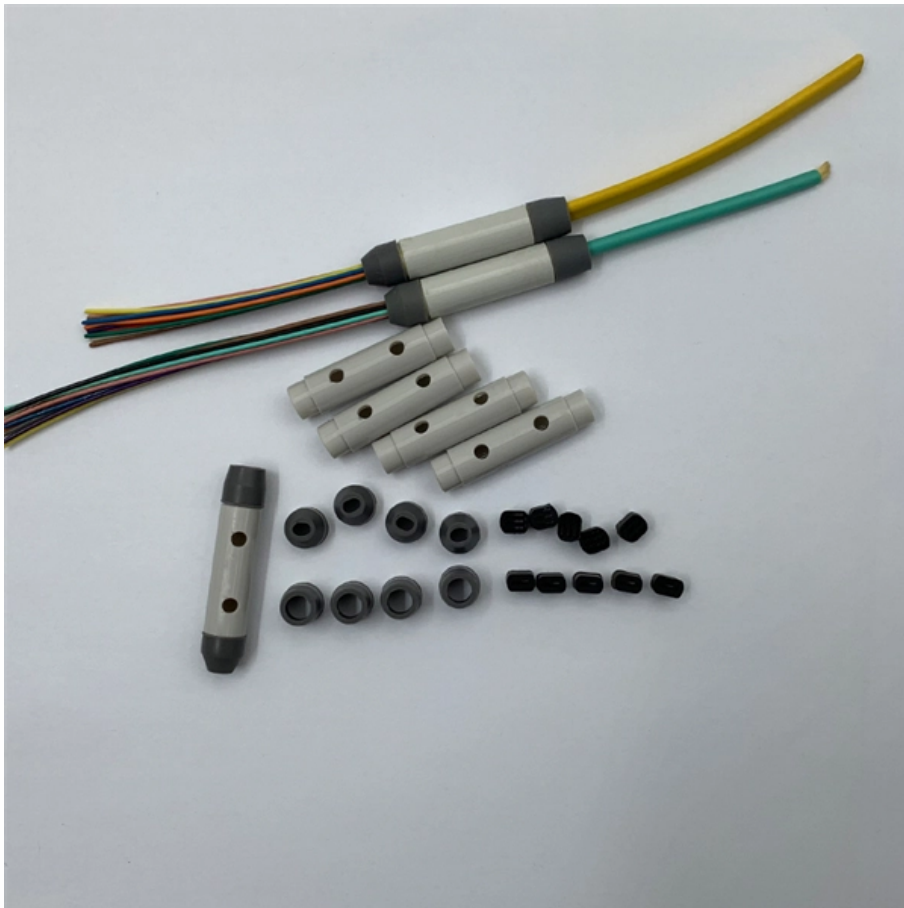


Ukrainian 405nm laser diode





Ukrainian 405nm laser diode

405 nm Collimated Diode Laser System

405 nm Violet Collimated Diode Laser System
The LRD-0405 Series of Collimated Diode (Semiconductor) Lasers are ideal for applications requiring a short



Ushio releases the world highest optical output power of

In December of 2024 Ushio started sample shipments of the HL40213MG, a single-mode laser diode (LD) with the industry's highest optical



405 nm SLM Laser (VBG Diode; MM Fiber)

DESCRIPTION Single-frequency (SLM) 405 nm lasers are widely used in compact Raman spectrometers. Small footprint and +5VDC (USB typical) operating voltage is exactly what's needed



405 nm Laser (Diode; PM Fiber)

DESCRIPTION Polarization-maintaining fiber-coupled 405 nm diode laser features extreme brightness combined with perfect beam shape and virtually perfect Gaussian intensity



Ushio has launched longer-life, 405 nm, 600 mW

HL40173MG, HL40175MG laser diodes offer increased voltage protection for biomedical, measurement, and 3D printing applications Ushio has launched its



405 nm SLM Laser

Description State-of-the-art 405 nm polarization-maintaining (PM) fiber-coupled diode laser, meticulously engineered to meet the standards of quantum cryptography.



Nichia 405nm Laser Diode System, 200mW, Single Mode

These systems are based on an integrated, thermally stabilized single mode 405nm Nichia laser diode with a separate controller unit. The controller unit contains a





405nm Laser Diodes

405nm laser diodes are based on a heterostructure with either gallium nitride or indium gallium nitride quantum wells. As a semiconductor laser diode (non-DPSS), they are available at output powers



405 nm SLM Laser

This laser provides a stable and narrow linewidth output at a 405 nm wavelength. Its meticulously engineered single-mode characteristics make it an ideal tool for

405 nm Laser

Description UV 405 nm laser with an SMA output is a very compact high-performance laser source for MM (multimode) fiber installations. Multimode fiber



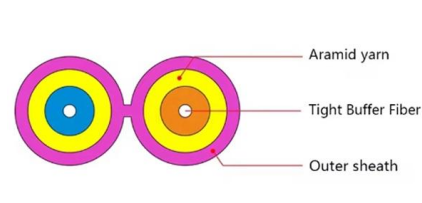
405nm Laser Diode - BeamQ Laser

405nm laser diodes have violet color. BeamQ All kinds 405nm Diode s. 405nm laser diodes are based on a heterostructure with either gallium nitride or indium gallium



405 nm Laser Range

405nm Laser Diodes Apart from laser modules, we can also provide various 405 nm laser diodes for your use, from 20 mW to 1 W of laser power, and from laser

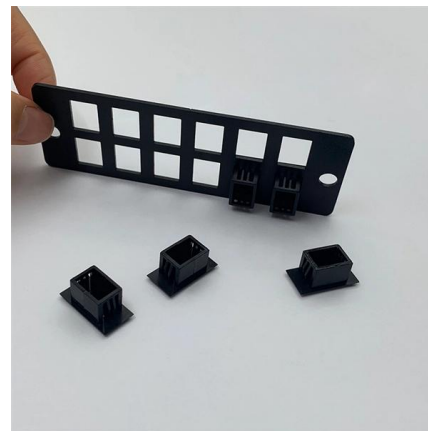


1pc Used Sharp GH0406AA2G 405nm 700mW Laser Diode Laser

Find many great new & used options and get the best deals for 1pc Used Sharp GH0406AA2G 405nm 700mW Laser Diode Laser Headers High Power at the best online prices at eBay! Free shipping for

405 nm Blue-Violet Laser Diodes

405 nm blue-violet laser diodes, the NV4V31MF-A, NV4V31SF-A and NV4V41SF-A, are designed for precision measurement, printing, and imaging applications.



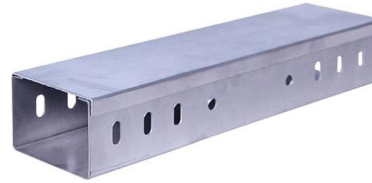
405 nm SLM Laser (VBG Diode; PM Fiber)

DESCRIPTION Polarization-maintaining (PM) fiber-coupled SLM 405 laser is distinguished by a very good beam quality and homogeneity. Integrated power electronics and monolithic fiber attachment



1PCS Second-hand Nichia 405nm 700mW NDV7112 Blue-Violet Laser Diode

Find many great new & used options and get the best deals for 1PCS Second-hand Nichia 405nm 700mW NDV7112 Blue-Violet Laser Diode at the best online prices at eBay! Free shipping for many



405nm laser modules - Kvant Modules

The fibre coupling is available for most KVANT diode laser modules, DPSS and OPSSL modules that we supply. We also offer our own diode laser module

405 nm SLM Laser (VBG Diode; SM Fiber)

DESCRIPTION Single-Mode (SM) fiber-coupled SLM or single-frequency 405 laser is distinguished by a very good beam quality and homogeneity. Highly stable mechanical design and precision control



190X95X25mm



D405-120 US-Lasers Inc. , Laser Diodes, Modules

Buy now, ships today. D405-120 - Laser Diode 405nm 120mW 4.8V 150mA Radial, Can, 3 Lead (5.6mm, TO-18) from US-Lasers Inc.. View datasheets, pricing and



Amazon : 405nm Laser Diode

10pcs 405nm Blue-Violet 5.6mm TO-18 Laser Diode, 20mW Output, With Photodiode, -10°C~+50°C Operating Temp, Precision Optoelectronic Add to cart



405nm 20mw~200mw~500mw Laser Diode

Wavespectrum offer 405nm SM Laser Diode, 20mw 65mw 100mw 200mw 20mw 400mw 500mw Single mode High power LD



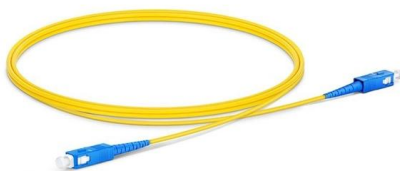
405 nm SLM Laser

405 nm single longitudinal mode (SLM) diode laser, purpose-built for the demanding realm of quantum cryptography. Its exceptional coherence and minimal linewidth



405nm Laser Diodes for Medical Bio & Industrial , Shop

Discover versatile 405nm laser diodes that suit your OEM or lab application. Expert assistance in selecting the perfect configuration awaits.





Thorlabs, Inc.

Hier sollte eine Beschreibung angezeigt werden, diese Seite lässt dies jedoch nicht zu.



DIODE LASER SYSTEMS

RLTMFC series combined laser diode, laser cavity, fiber coupling, power supply, LED display and crystal temperature control in one box. RLTMxL FOC, contains a



High Power 405nm Laser Diode, 1W Output

This multimode 405nm laser diode delivers up to 1 Watt output power. Applications include biological and medical systems, measurement, and 3D-printer applications.



405nm BLUE VIOLET

Fully-Customizable Diode Laser Modules Diode Laser Concepts, Inc. has added 405nm blue-violet diode laser modules to its standard product offerings. These 405nm modules are available in all of





405 nm SLM Laser

405 nm single longitudinal mode (SLM) laser with polarization-maintaining (PM) fiber, tailor-made for Raman scattering and fluorescence applications. This laser,



Contact Us

For datasheets, pricing, or custom high-speed optical interconnect solutions, please visit:
<https://www.syropy.com.pl>