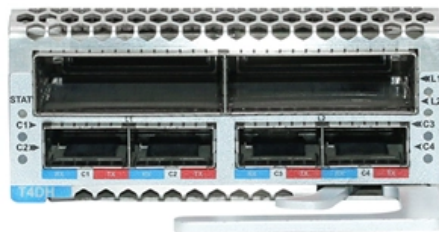


# Ukraine QSFP28 optical module

## QSFP28





## Ukraine QSFP28 optical module QSFP28

---

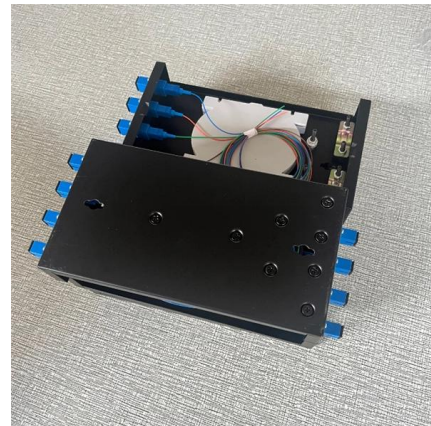


### What Is QSFP28? A Clear Explanation of 100G Transceivers

At the center of this transition is QSFP28, a compact, high-performance optical transceiver form factor designed specifically for 100-gigabit data rates.

### Custom 100G QSFP28 SRBD Module , Duplex LC MMF

Upgrade to 100G without pulling MPO cables. WolonFiber's 100G QSFP28 SRBD transceivers push 100Gbps over your existing Duplex LC multimode fiber infrastructure.



### Differences Between Optical Modules SFP, SFP+, CFP, XFP, QSFP

In the data center, various types of optic module transceiver are seen everywhere, such as SFP, SFP+, XFP, SFP28, QSFP/QSFP+, CFP and QSFP28. However, for those who get in touch

### 100Gbps QSFP28 Optical Modules

QSFP-100G-CWDM4 QSFP28-100G-LR4  
QSFP28-100G-SR4 QSFP-100G-4WDM-40  
QSFP-100G-CWDM4-ISP QSFP-100G-CWDM4-Lite  
QSFP-100G-ER4 QSFP-100G-SWDM4  
QSFP28-100G-1310



**Amazon : KVSYYKII 100GBASE-LR4 QSFP28 Optical Transceiver Module**

Buy KVSYYKII 100GBASE-LR4 QSFP28 Optical Transceiver Module Compatible with QSFP-100G-LR4-S MA-QSFP-100G-LR4 QSFP28 10KM 1310nm (2PCS): Transceivers - Amazon FREE

**QSFP+/28/56 AND SFP28/56 OVERVIEW**

QSFP28 BiDi TRANSCEIVERS 1) This transceiver has inbuilt FEC so host system shall not activate FEC.



**QSFP28 Transceiver: The Ultimate 100G Optical**

QSFP28 Single Lambda modules have made an optical technology breakthrough, which allows delivery of 100G Ethernet connectivity over a single





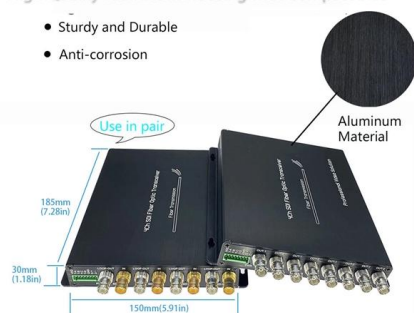
## 100Gb/s QSFP28 Transceivers , Optical Interconnect

Amphenol's 100G QSFP28 optical modules include SR4, AOC, AOC break out, CWDM4, LR4, ER4 Lite, ER4 and ZR4 series, which adopt LC or MPO



High Quality Aluminum Housing with Compact Size

- Sturdy and Durable
- Anti-corrosion

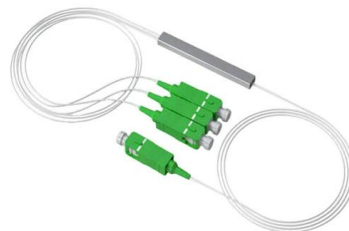


## Custom 100G QSFP28 PSM4 Module , MPO Breakout , WolonFiber

The 100G QSFP28 PSM4 transceiver is specifically architected for high-density single-mode breakout topologies. Unlike CWDM4 modules that multiplex signals over a duplex LC interface, the PSM4

## Custom 100G QSFP28 CWDM4 Module , 2km SMF LC , WolonFiber

The 100G QSFP28 CWDM4 transceiver is an MSA-compliant module built for hyperscale Data Center Interconnects (DCI). It multiplexes four 25Gbps optical signals into a single 100Gbps stream over



- IP65/IP55 OUTDOOR CABINET
- OUTDOOR MODULE CABINET
- OUTDOOR ENERGY STORAGE CABINET
- 19 INCH

## Selecting the Perfect 100G Optical Module Packaging:

100G optical module have emerged as essential components in the fast-paced world of data centers and network communications,. With a plethora of



### 100G QSFP28 Cable and Transceiver Modules Data Sheet , FS

Product overview The FS® 100GBASE Quad Small Form-Factor Pluggable (QSFP28) portfolio offers customers a wide variety of high-density and low-power 100 Gigabit Ethernet connectivity options for



### QSFP28 Transceiver: Complete 100G Connectivity Guide (2026)

QSFP28 transceiver guide covering module types, pricing, compatibility, and deployment. Learn how to choose, deploy, and troubleshoot 100G QSFP28 optics.

### SFP+, SFP28, QSFP+, QSFP28, QSFP56, QSFP-DD,

Initial Published: February 19, 2022 The optical transceiver plays a crucial role in modern fiber networking. Various high-speed transceiver types are



### Optical Transceivers SFP SFP28 QSFP28 QSFP-DD 1G to 400G Range

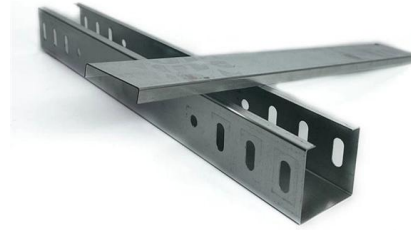
Browse optical transceivers from Pivotal Optics including SFP, SFP28, QSFP28 & QSFP-DD modules. 1G to 400G solutions for data centers & networks. Shop now!

### Optical Modules in General-Purpose



## Computing Scenarios

Huawei offers a comprehensive portfolio of pluggable StarryLink optical modules for data center networks, with various models providing flexible plug-and-play solutions tailored to diverse interface



## 100G Optical Transceiver

100G Optical Transceiver 100G optical transceiver has a variety of packaging forms, including CFP/CFP2/CFP4, CXP and QSFP28. QSFP28 optical transceiver has

## Optical Transceiver: SFP vs SFP+ vs QSFP28 vs QSFP-DD

This article provides a comprehensive comparison of mainstream optical transceivers, including SFP, SFP+, QSFP+, QSFP28, and QSFP-DD. It explains their technical differences,



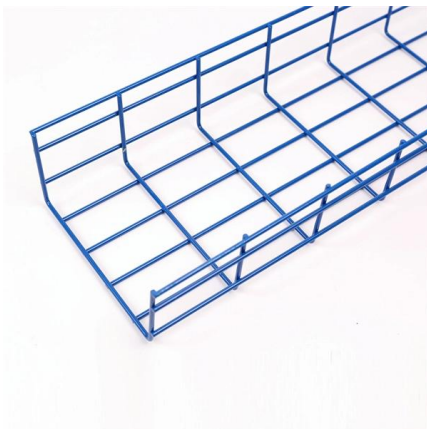
## Wholesale Optical Transceivers Module , 100G

Shop high-speed optical transceivers from Unitekfiber. We offer 100% compatible 40G, 100G, and 400G QSFP-DD modules for data centers. Expert technical



### **Innolight 100Gb/s QSFP28 CWDM4 Lite 500m Optical**

Introducing an advanced transceiver module, purpose-built for 500m optical communication applications, compliant with the 100GBASE CWDM4 Open

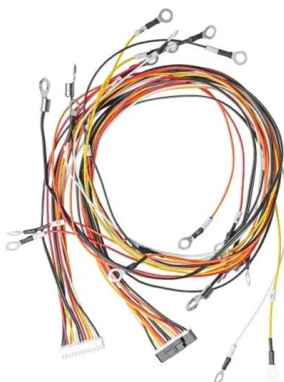


### **100G QSFP28 Transceiver Modules , Optical**

FS offers a growing portfolio of 100G QSFP28 modules. The 100G QSFP28 module solution provides high-performance 100GbE connectivity for data centres,

### **Custom 100GBASE-SR4 QSFP28 Module , MPO 100m/300m**

Order customized 100GBASE-SR4 QSFP28 modules. Available in standard 100m, eSR4 300m, and Industrial-grade options for dense spine-leaf interconnects.



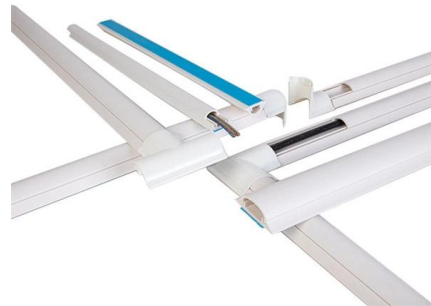
### **Custom 100G QSFP28 ZR4 Module , 80km SOA Amplified**

Execute extreme-distance optical transport. The 100G QSFP28 ZR4 utilizes internal SOA amplification and APD receivers to bridge unamplified 80km spans.

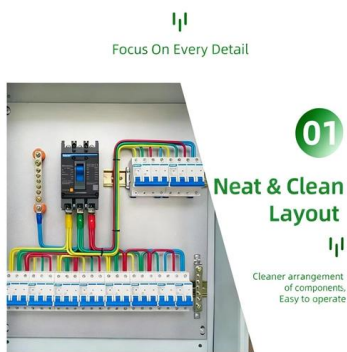


### Small Form-factor Pluggable

Small Form-factor Pluggable Small Form-factor Pluggable connected to a pair of fiber-optic cables Small Form-factor Pluggable (SFP) is a compact, hot-pluggable



#### DETAILS DISPLAY



### direcXource Ciena QSFP28-SR4 Compatible 100GBASE-SR4 QSFP28

Ciena QSFP28-SR4 compatible optical transceiver is a parallel 103.1Gbps Quad Small Form-factor Pluggable QSFP28 module for use in 100GBASE Ethernet. QSFP28 SR4 provides 100Gb/s

### Custom 50G QSFP28 Optic Transceiver , Long-Haul Reach , WolonFiber

Deploy unamplified 50G links over single-mode fiber. Our Custom 50G QSFP28 modules provide robust performance for legacy switch upgrades.



### 100G QSFP28 DR Single Lambda Optical Transceiver Module

100G QSFP28 DR Single Lambda is a transceiver module designed for 500m optical communication applications. The module incorporates one channel optical signal on 1310nm center wavelength,



## Contact Us

---

For datasheets, pricing, or custom high-speed optical interconnect solutions, please visit:

<https://www.syropy.com.pl>