

US Aggregation Switch 25G





US Aggregation Switch 25G

Ubiquiti UniFi Pro Aggregation 25G Switch Review



Ubiquiti UniFi US-XG-6POE 10GB POE Switch Review. All Of Our Affiliates that help us out and can get you discounts! Try ITProTV free of charge

Zyxel CX4800-56F-DDC 48-Port Fiber Switch , L3 Aggregation, 100G

Move aggregation traffic without bottlenecks. The Zyxel CX4800-56F-DDC brings 48 x 10G/25G SFP28 ports and 8 x 100G uplinks into a dual DC platform designed for demanding fiber backbones.



48-port 10G/25G L3 Aggregation Fiber Switch with 8

Zyxel CX4800-56F high-density 100G/25G Layer 3 aggregation switch with Nebula cloud, 4.0 Tbps capacity, and high-availability system design.

Ubiquiti USW-Pro-XG-Aggregation Specifications

Ubiquiti USW-Pro-XG-Aggregation UniFi 32-Port L3 Cloud Managed 25G SFP28 Aggregation Switch, Specifications



UniFi Hi-Capacity Aggregation

A 32-port, Layer 3 switch made for high-capacity 10G SFP+ and 25G SFP28 connections.



Ubiquiti Enterprise Campus Aggregation (ECS-Aggregation)

Product Description 1.8 Tbps high-density 100G/25G Layer 3 Etherlighting aggregation switch with MC-LAG support for high availability system design.



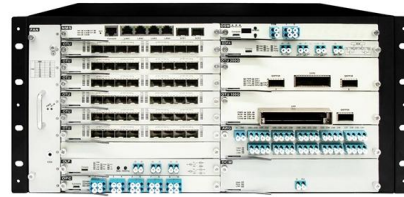
Amazon : UBIQUITI UniF Aggregation Switch Pro, 28-Port 10G

Product Description UniFi Pro Aggregation Switch The Switch Pro Aggregation is a fully managed, Layer 3 switch with (28) 10G SFP+ ports and (4) 25G SFP28 ports designed to enhance your network's



Ubiquiti Pro XG Aggregation 32-Port 25G USW-PRO

Expand your network by connecting gateways and other compatible devices to the Ubiquiti Pro XG Aggregation 32-Port 25G SFP28 Managed Network Switch. This



Switch Aggregation

An 8-port, Layer 2 switch made for 10G SFP+ connections.

Ubiquiti UniFi Pro Aggregation 25G Switch Review

UniFi Network Controller Update 5.13.29 And Gen2 Pro Layer 3 Routing Ubiquiti Networks UniFi US-16-XG 10GbE 16-Port Managed Switch Review Connecting With Us



Ubiquiti UniFi Pro Aggregation Switch

The UniFi Switch, model USW-Aggregation-Pro, is a configurable 10G ber Layer-3 switch. It offers 28 10G SFP+ ber links to your devices and 4 25G SFP28 ber uplink options to your enterprise network.



UniFi Pro XG Aggregation

Professional-grade 32-port, Layer 3 Etherlighting(TM) switch for high-capacity 25G SFP28 connections.



Ubiquiti USW-Pro-Aggregation UniFi 32-Port Layer 3

Build and expand your business's high-speed network with the UniFi Switch Pro Aggregation 28-Port 10G SFP+ Managed Switch from Ubiquiti Networks. This

U S W

UniFi Pro Aggregation Switch Build and expand your network with the UniFi® Switch, part of the Ubiquiti Networks® UniFi Enterprise System. The UniFi Switch, model USW-Aggregation-Pro, is a con





Multilink Solutions Inc

This and all future requests should be directed to this URI.



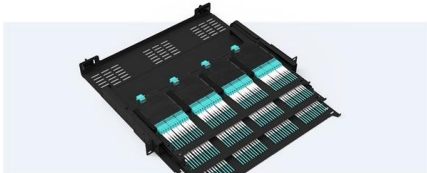
Ubiquiti UniFiSwitch Aggregation Rackmount 25G

Teilen Sie uns Ihre Meinung zu Ubiquiti UniFiSwitch Aggregation Rackmount 25G Managed Switch, 32x SFP28 mit oder lesen Sie die



Pre-Terminated Patch Panel

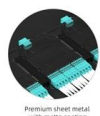
- Standard 19" width
- Max 144 fibers in 1U
- Ultra-High Density Ready



Dual-sail, easy install & maintain



Lightweight ABS SFP28 cassette



Premium sheet metal with multi-coating

USW Aggregation 25G SFP28 not working : r/Ubiquiti

Hi guys, I recently recommended Ubiquiti switches to a customer. The customer wanted 25G ports between his buildings and went with the pro aggregation switches and some SFP28 modules (ESR

Switch Pro XG Aggregation

Professional-grade 32-port, Layer 3 Etherlighting(TM) switch for high-capacity 25G SFP28 connections.





Switch Hi-Capacity Aggregation

A 32-port, Layer 3 switch made for high-capacity 10G SFP+ and 25G SFP28 connections.



Amazon : UBIQUITI UniF Aggregation Switch Pro, 28-Port 10G

UniFi Pro Aggregation Switch The Switch Pro Aggregation is a fully managed, Layer 3 switch with (28) 10G SFP+ ports and (4) 25G SFP28 ports designed to enhance your network's switching capacity



Switch Enterprise Campus Aggregation

1.8 Tbps high-density 100G/25G Layer 3 Etherlighting(TM) aggregation switch with MC-LAG support for high availability system design.

Contact Us

For datasheets, pricing, or custom high-speed optical interconnect solutions, please visit:
<https://www.syropy.com.pl>