

UK Standards for Enclosure Requirements of Electrical Distribution Boxes





Overview

The IEC (International Electrotechnical Commission) and BS 7671 (British Standard for Electrical Installations) both provide essential requirements for electrical installations, including those for fuse boards like garage unit, consumer unit and distribution board. BS 7671:2008 (IET Wiring Regulations Seventeenth Edition), which was published in January and comes into effect on 1 July, will include a new regulation requiring consumer units and similar switchgear assemblies in domestic premises to have a non-combustible enclosure. Failing to comply doesn't just put properties at risk—it could also result in legal consequences. Understanding these regulations is essential, whether you're upgrading an old fuse. Listed below are some commonly used electrical standards and approved codes of practice. Additional standards and codes of practice would generally be needed to satisfy a specific application - it is the responsibility of the specifier to select and apply these. This guide gives you a clear, up-to-date overview for 2025: who the regs apply to, what they cover (and don't), how they link to Building Regulations and the Electricity at Work Regulations, the current 18th Edition with recent changes, and the essentials on RCDs, AFDDs, SPDs and bonding.



UK Standards for Enclosure Requirements of Electrical Distribution



Gambica-Enclosures Book. 3rd edition. Issue 1. Aug 02.qxd

The standard applies to enclosures for electrical equipment with a rated voltage not exceeding 72.5 kV. The standard provides Definitions, Designation and Requirements for degrees of protection provided

Guidance on installing equipment within meter

Nevertheless, the guidance also highlights that these minimum space requirements do not allow for the inclusion of any other additional customer



Switched On Ebulletin 1 - AMD 3 consumer unit mythbust

Switched On Ebulletin 1 - AMD 3 consumer unit mythbuster From 1st January, consumer units and similar switchgear assemblies installed in domestic premises must either have their enclosure



UK Electrical Wiring Regulations: BS 7671 Guide (2025)

The 18th Edition of the UK electrical wiring regulations remains the live standard for 2025. BS 7671 came into effect on 1 January 2019 and has since been



Future Automation Enclosure Compliance with 18th Edition BS

In the UK since 2008, there has been a requirement that all electrical installations must adhere to the 17th edition BS 7671 "Requirements for Electrical Installations", written and maintained by Institution

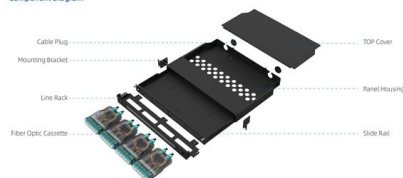


Consumer Unit Mythbuster

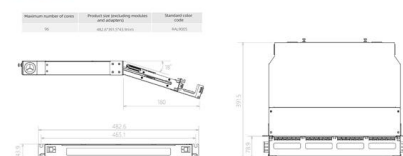
From 1st January, consumer units and similar switchgear assemblies installed in domestic premises must either have their enclosure constructed from non



Component Diagram



Key dimensions



Electrical Enclosure Standards , Polycase

Electrical enclosure standards like NEMA ratings and IP ratings are important for choosing the right enclosure. Here's what you need to know.

Distribution Boxes vs. Distribution Boards



vs. Electrical Enclosures

Distribution Boxes and Boards: Must comply with IEC 61439, UL 67, or equivalent standards specifying design, testing, and installation requirements. Electrical Enclosures: Rated



17th Edition (BS 7671:2008) incorporating Amendment No

Significant changes have been made for all those involved in periodic inspection and testing of electrical installations. The periodic inspection report in the 17th edition (BS 7671:2008) has been replaced

The Electricity Safety, Quality and Continuity

The British Standard Requirements referred to in regulation 1 (5) is a joint publication by the British Standards Institution and The Institution of Electrical Engineers.



IEC / BS 7671 Codes for Consumer Unit and Distribution

The IEC (International Electrotechnical Commission) and BS 7671 (British Standard for Electrical Installations) both provide essential requirements for electrical



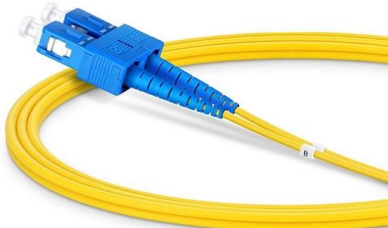
What Are the Latest Regs for Consumer Units?

Are your consumer units compliant? Find out the latest UK regulations, including AFDDs, RCDs, and installation requirements.



Installation requirements for distribution boxes

Distribution boxes shall be made of non-combustible materials; open distribution boards may be installed in production places and offices with low electric shock risk; enclosed cabinets shall



Mounting electrical components in



Requirements And Specifications For Installation Of

In flammable and explosive environments, explosion-proof distribution boxes should be selected and explosion-proof treatment should be carried out.



Selection of Electrical Enclosures

IP Enclosures provide standard locks with all electrical enclosures and can provide optional locking systems to suit any requirement including electronic and



enclosures LEGACY

This standard identifies the competences you need to mount electrical components in enclosures, in accordance with approved procedures. The final enclosure could be used for distribution equipment,

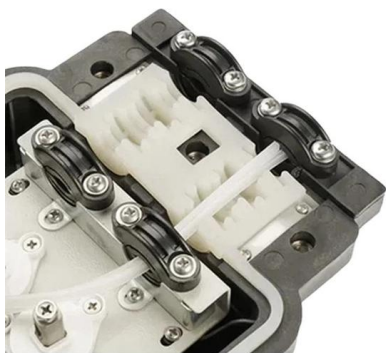


Outdoor Electrical Distribution Box Specifications: NEC

Complete specification guide for outdoor electrical distribution boxes covering NEC Article 312 requirements, NEMA ratings, sizing calculations, and

Business Documentation (DBD)

Distribution Substation Enclosures shall comply with the latest issues of the relevant national and international standards. Additionally this technical specification is intended to amplify and/or clarify



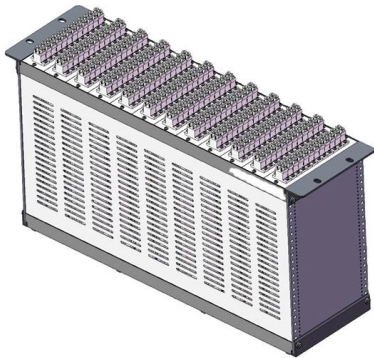
Understanding Distribution Boxes: A Comprehensive Guide

support safer operation in electrical systems For this reason, distribution boxes are widely used in homes, commercial buildings, industrial



Consumer Unit Mythbuster

This refers to any items of switchgear performing a similar function to a consumer unit for the control and distribution of electricity within the domestic (household)



Electrical safety: Approved Document P

Statutory guidance Electrical safety: Approved Document P Building Regulation in England covering electrical safety in dwellings.

GUIDANCE ON THE ELECTRICITY

The new Regulations specify safety standards which are aimed at protecting the general public and consumers from danger. In addition, the Regulations specify power quality and supply continuity



Electrical standards and approved codes of practice

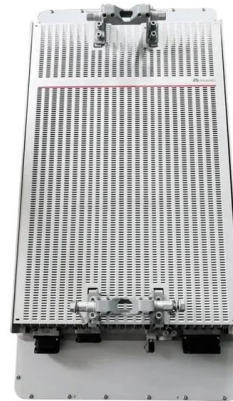
Listed below are some commonly used electrical standards and approved codes of practice. Additional standards and codes of practice would generally be needed to satisfy a specific application



Ensuring Safety In Electrical Enclosures , UK Kiosks



Discover the essential safety guidelines and compliance standards for electrical enclosures in the UK. From IP ratings to secure locking mechanisms,



Electrical Equipment (Safety) Regulations 2016: Great

Guidance on the regulations as they apply to equipment being supplied in or into Great Britain.



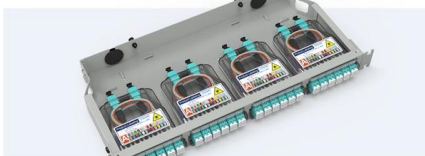
Enclosures 101: An introduction to electrical enclosure

To many end-users an enclosure is simply a box in which to store electrical components or connections, and the specification process needs to take no more



Pre-Terminated Patch Panel

- Multi-application support
- Flexible configuravon
- Modular design



Cable Gland Plug
28mm Cable Gland Plug



MPO-LC up to 96 cores
MPO direct connection 48 ports



Mounting Bracket
Semi-open mounting holes

Electrical Equipment (Safety) Regulations 2016: Great

The 2016 Regulations set out the requirements that must be met before electrical equipment products can be placed on the GB market.



Specification 034. Electrical Installations

The opportunity has been taken to update various references to other standards. It is recognised that electrical engineering standards are rapidly changing, with many BS EN series standards replacing



Requirements for Electrical Installations READ N RERDTINR

722.55.101.0.201.2 Each socket-outlet shall be installed in a distribution board in accordance with Regulation 722.51 or in its appropriate enclosure (e.g. flush or surface mounted socket-outlet box)

Contact Us

For datasheets, pricing, or custom high-speed optical interconnect solutions, please visit:
<https://www.syropy.com.pl>