

UG Design of Distribution Box





UG Design of Distribution Box



Power Distribution Boxes Explained Simply

Learn what a power distribution box is, how it works, key components, types, and why it's vital for safe and efficient electrical systems.

What Is an Electrical Distribution Box? A Complete Guide

What Is an Electrical Distribution Box? An electrical distribution box serves as a centralized unit for distributing electrical power within



Agenda Constructing, Operating, and Maintaining Underground Distribution

Plan and design underground distribution systems and discuss the pros and cons of the various design options, including the factors affecting underground distribution systems, such as reliability,



Underground Distribution System Design Guide

This report gives the engineer guidelines for designing a high-quality underground distribution (UD) system. Before starting a design, the engineer must have



Underground Distribution System Design Guide

This 400+ page guide provides a step-by-step methodical approach to designing an underground distribution system. From selecting the cable to designing the



Considering Reliability in the Design of Mixed Overhead and

Many utility companies are converting overhead (OH) main line feeder sections to underground (UG) to improve reliability, system resiliency, or other local customer demands. A Hybrid distribution feeder is



Underground Power Construction Standards Updated June 2025

Padmount switchgear generally will be required for any tap off of the City's main distribution system that has the potential of serving more than one commercial/industrial location or more than one

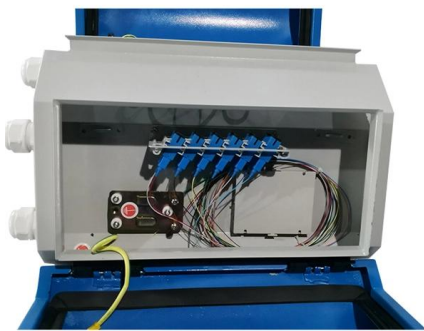


Distribution Box: Types and Functions ,



Axis-Electricals

A distribution box ensures that electrical supply is distributed in the building, also known as a distribution board, panel board, breaker panel, or electric panel.



Underground Distribution System Design Guide

5.38 Typical Distribution Transformer Core Form Design and Neutral Grounding Circuit Variation of Surge Impedance with Surge Current for Various Values of 60-Cycle Resistance Surge

Distribution Box Manufacturing Process , Custom

Learn the step-by-step distribution box manufacturing process--from design and material selection to assembly and testing. E-abel provides high-quality electrical



What Factors To Look For When Choosing Electrical Distribution Boxes

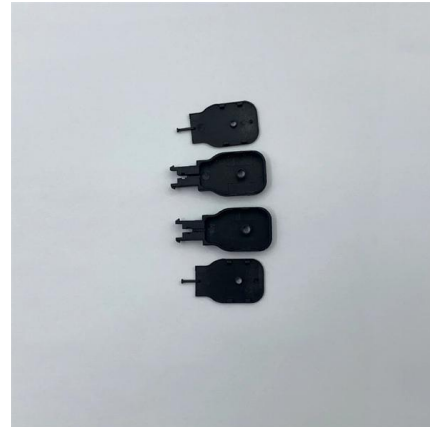
Aesthetics Apart from safety, the design and appearance of distribution boxes are receiving a lot of attention these days. Gone are the days when distribution boxes damaged your house or

Size determination, installation method and



wiring mode

The distribution box is the central hub of the home circuit and the general control of our daily power consumption. It is an indispensable electrical equipment. If there

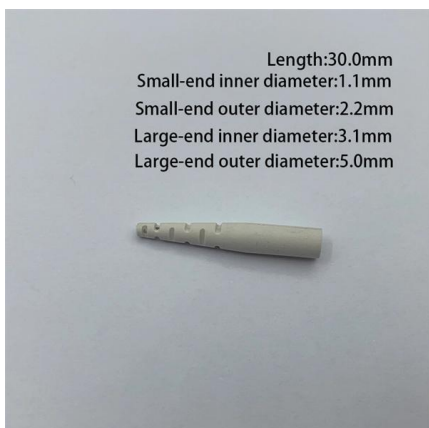


Distribution Boxes Types - The Complete Guide

The power distribution boxes deliver electricity from the main electrical main to other circuits. Several distribution boxes are designed for specific use in

Underground Power Construction Standards Updated June 2025

Power Design: All new developments require a power design. Tenant improvements that request additional power must coordinate the project with the power company that serves that area online



Aditya University

Hier sollte eine Beschreibung angezeigt werden, diese Seite lässt dies jedoch nicht zu.



Agenda Constructing, Operating, and Maintaining Undergrou

Plan and design underground distribution systems and discuss the pros and cons of the various design options, including the factors affecting underground distribution systems, such as reliability,



Custom Electrical Distribution Boxes: Tailored Solutions for Industrial

Discover how E-Abel customizes electrical distribution boxes to meet unique requirements for industrial, commercial, and residential applications. Learn about our design,

DISTRIBUTION BOX

Technical Specification for Distribution Box (DB)-
Accessory for LT AB Cables 1. SCOPE 1.1 This Distribution Box (DB) should be made up of Weather & Moisture Proof Outer box with Spring loaded



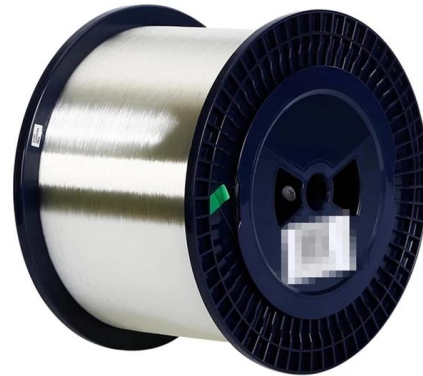
A comprehensive understanding of distribution box

At Timelec, we provide customized, high-quality distribution boxes that meet international safety standards, with a strong focus on durability,



Power Distribution OH & UG Line Design

Let us engineer your next power delivery project whether it involves overhead medium voltage (MV) line distribution and underground service distribution design



TECHNICAL SPECIFICATION I.R.O. 63,100,160 & 315 KVA L.T.

For temperature rise test, a distribution box with all assembly of Isolator / Porcelain cutouts shall be kept in an enclosure such that the temperature outside the box shall be maintained at 50 ° C.

What is a Distribution Box? - A Comprehensive Guide

Indoor distribution boxes are compact and accessible, suitable for controlled environments such as homes and offices where moisture and



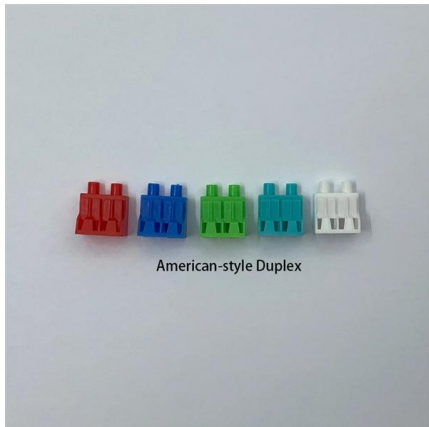
Specifications for Electrical Underground Distribution Systems for Pad

This document represents the minimum requirements and specifications for the installation of the electrical underground distribution systems fed from padmounted transformation, serving Secondary

Specifications for Electrical Underground Distribution Systems from



Specifications for Electrical Underground Distribution Systems from Pad Mounted Transformation, Apartments & Condominiums Specification DDS-3 UG Revision 13, November 2023

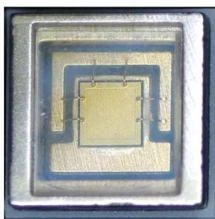


Distribution enclosure, Distribution box

New IP40 distribution boxes, new design with great ease of assembly Discover the IP40 distribution boxes of the new GOLD Series specially designed for the tertiary and residential sector.

Mechanical Design for Distribution Box

This document provides design calculations for a distribution box.



Underground Construction Standards - Distribution System

This section addresses the Underground portion of the distribution system, which includes primarily the pad-mounted features of the standards. The documents provided in this section are detailed and



UNDERGROUND ELECTRIC DISTRIBUTION CONSTRUCTION

III.2.1.4. III.2.1.5. The hammer used shall be operated at the pressure and speed recommended by manufacturer. Type of hammer to be used shall be furnished to the Design Consultant for approval



Contact Us

For datasheets, pricing, or custom high-speed optical interconnect solutions, please visit:
<https://www.syropy.com.pl>