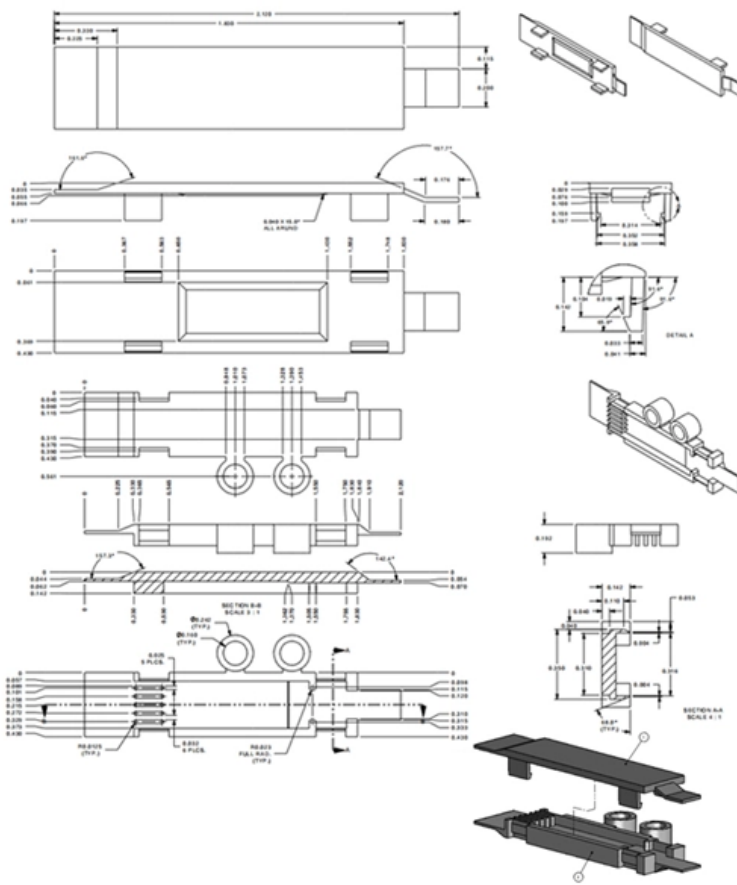


Trunk Optical Cable Cutover





Trunk Optical Cable Cutover

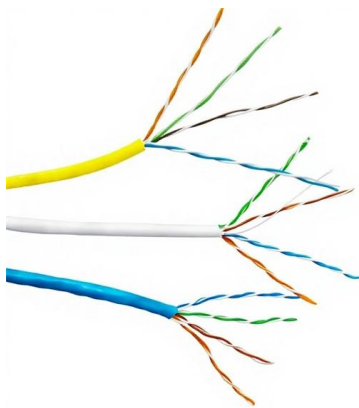
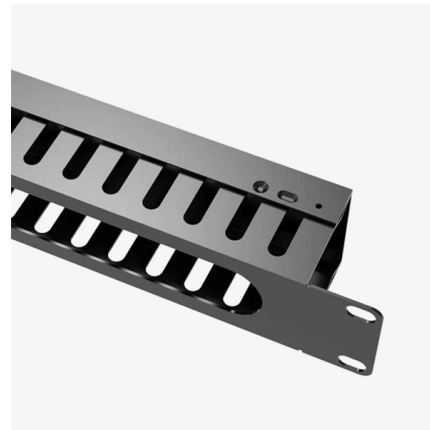


Decoding MTP/MPO Connectivity: Breakout Cables vs. Trunk Cables

In hyperscale data centers and enterprise networks, MTP/MPO fiber optic solutions have become the backbone of high-speed connectivity. Understanding the operational distinction between

Cable cutover to pay attention to what

4 test, test before the test and then split after cutover testing, cutover at the cutover site to do the preparatory work must be arranged into the terminal personnel to test, cutover testing purposes



Fiber optic trunk cables , Rosenberger OSI

Rosenberger OSI introduced high-fiber-count factory assembled fiber optic trunk cables based on loose tube indoor, universal and outdoor cables to the market in 1991.

OptoTrunk Cables

OptoTrunk Cables combine multiple cables into one, using high-density connectors like 144F Expanded Beam Optical (EBO) and LC cartridges to enable efficient,

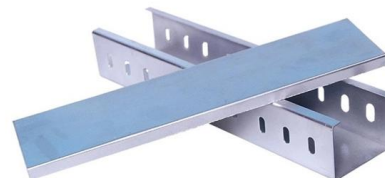


What is a Fiber Trunk Cable?

This includes inspecting the cable for damage, cleaning connectors, and performing periodic tests to ensure that the cable is operating within specifications. In summary, a Fiber Trunk

FTTP/FTTH Cutover Services , Fiber Optic Splicing and

Fiber-Tel has extensive experience in splicing, premise wiring, and cutover services for broadband to the home. Our crews are experienced splicing &



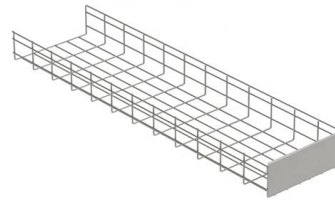
Multifiber assemblies

Trunk cables quickly connect patch panels and distribution cassettes, reducing the number of connections and improving reliability. Breakout cables, on the other hand, allow the separation of



MTP Trunk Cables vs MTP Breakout Cables: How to Select

In high-density network environments such as data centers, MTP trunk cables and MTP breakout cables are two essential types of fiber optic



The Role of Fiber Trunk Cables in Modern Network Infrastructure

In today's high-speed data transmission world, fiber trunk cables are essential components that form the backbone of advanced optical networks. These cables are designed to

What Is a Trunk Cable and How Are Trunk Cables Used

Learn what a trunk cable is and how trunk cables help companies streamline data center cabling, improve scalability, and support high-density environments.



MTP Trunk Cable Deployment in Large-Scale Data Centers

MTP trunk cables play a critical role in high-speed data centers, enterprise networks, and telecommunication infrastructures by providing a dense, efficient, and



MPO MTP® trunk cables: 2026 Architecture & Procurement Guide

Analyze the deployment of MPO MTP® trunk cables for high-density networks. Explore technical specifications, TIA standards, trade-offs, and 800G transitions.



Fibre optic trunk cables , Rosenberger OSI

Rosenberger OSI introduced high-fibre-count factory assembled fibre optic trunk cables based on loose tube indoor, universal and outdoor cables to the market in 1991. PreCONNECT STANDARD was the

CN101907747A

The optical cable cleft grafting technical management is important, a complicated job usually, service operation network requirement 24 hours is uninterrupted, and cutover generally all is that the circuit,



What are the different types of Fiber Trunk Cables?

Fiber Trunk Cables, also known as fiber optic trunk cables, are crucial components in modern communication networks. These cables utilize small glass



MPO/MTP Trunk Cables vs Breakout Cables

Understand the difference between MPO/MTP trunk cables and breakout cables. Learn structures, and benefits to choose the right fiber solution

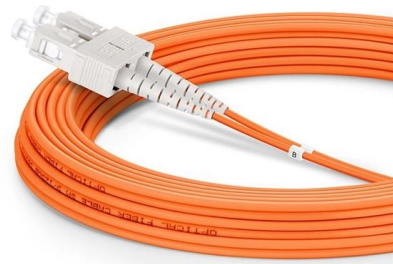


Maximizing Network Efficiency with Fiber Trunk Cables: Features

Additionally, fiber trunk cables enable efficient cross-connects between different racks and rows, facilitating organized and scalable network expansions. In telecommunications, fiber trunk

What is Fiber Optic Trunk Cables ?

Fiber optic trunk cables are pre-terminated cable assemblies connecting switches, servers, patch panels, and zone distribution areas in the data center, or serving as the backbone of enterprise fiber



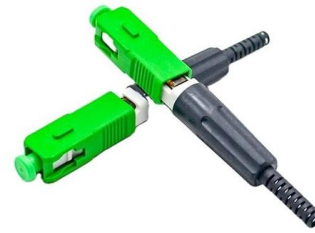
Cable cutover to pay attention to what

Staff must approach at least an hour early, put on the connector box and open, to determine the backbone of this cutover cable core, open-access fiber optic cable stripping and pre-order stationary



Fiber Trunk Cables , Leviton Network Solutions

Fiber trunks are pre-terminated cable assemblies connecting switches, servers, patch panels, and zone distribution areas in the data center, or serving as the backbone of enterprise fiber networks. When

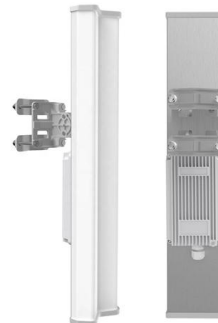


Fiber Optic Trunk Cables

Our fiber optic trunk cables provide high density connections to patch panels, cassettes or cable harnesses. Order a single or multi mode cord online today!

Trunk cables & preassembled installation cables

Discover our wide range of U-DQ trunk cables as variant with LC or SC connectors, for example, in categories OS2, OM2, OM3, OM4 and OM5.



Fiber Trunk Cables: The Backbone of High-Speed Connectivity

A fiber trunk cable is a type of optical fiber cable designed to handle multiple fiber connections within a single, robust cable. Unlike standard patch cables, fiber trunk cables are used

MW / Cutover Guide -- PRO FIBER



Knowledge Base -- PRO FIBER

Complete step-by-step guide for maintenance window and cutover procedures. Pre-MW planning, execution, validation, rollback, and documentation.



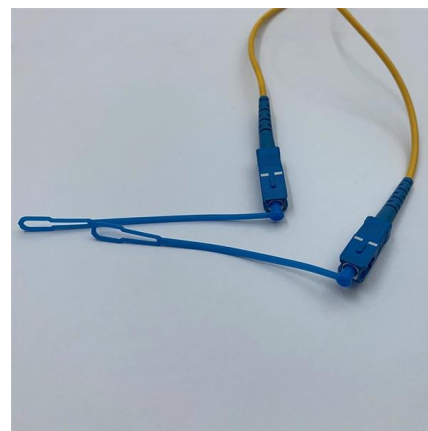
Quality Optical Fiber Trunk Cable Assemblies

Discover top optical fiber trunk cable assemblies made in the USA. Explore our industry-leading products and enhance your connectivity.



Fiber Trunk Cables , Leviton Network Solutions

Leviton fiber trunks are pre-terminated cable assemblies, and are ideally deployed in data centers and enterprise fiber networks.



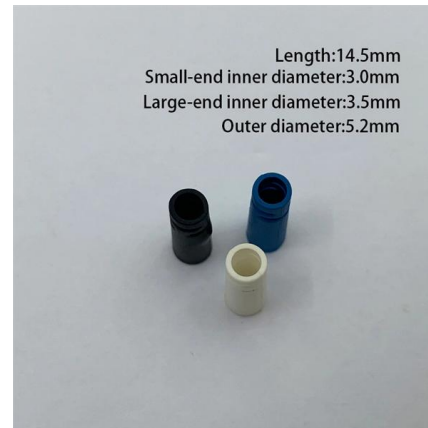
Trunk Cable , Hubbell Premise Wiring

FiberHubb(TM) modular trunks provide the customization and bandwidth needed for today's high-performance networks. Our dedicated fiber optic facility ensures our assemblies are tested to the



Optical Line Protection ,FiberMall

(4) When the optical cable cutover is required during the maintenance process, the OLP configuration mode is normally not returning to the automatic mode. Before



Contact Us

For datasheets, pricing, or custom high-speed optical interconnect solutions, please visit:
<https://www.syropy.com.pl>