

Trough-type cable trays are a type of pipe fitting





Overview

Trough (Ventilated) Tray: Features a ventilated bottom, offering a balance between the strength of a ladder tray and the protection of a solid bottom. Instead of side rails or bottoms, the tray relies on: From a mechanical perspective, this. eferred to support and protect numerous small instrumentation and control cables. Because of its closed design, this type of tray should e used in applications where there is minimal risk of heat generation and buildup. A cable tray system is a unit assembly of sections and fittings that forms a rigid structural system used to securely fasten or support cables and wiring. Each cable tray type performs a different function and comes in various materials such as aluminum, galvanized steel, and FRP. Cable trays made by JLH Electric can be divided into carbon steel cable trays, stainless steel cable trays, aluminum alloy cable trays, fiberglass (FRP) cable trays, fireproof.



Trough-type cable trays are a type of pipe fitting

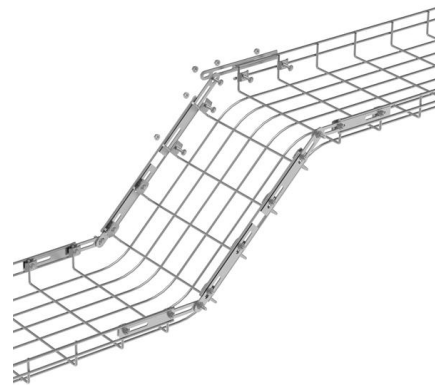


7 Types of Cable Trays: How to Choose the Right One

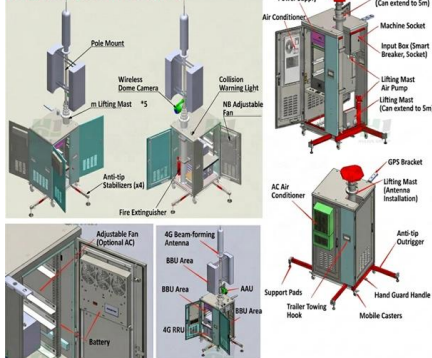
A perforated cable tray--also called a ventilated trough tray --features a solid bottom with regularly spaced ventilation holes and continuous

What Is A Cable Tray? 5 Types Of Cable Trays

A cable tray is a structural system used to support and manage electrical system cables in various settings, such as industrial, commercial, and residential environments.



Product Composition Description



CABLE TRAY SYSTEMS GUIDE

Material: Side Rails: Fitting side rails are I-beams with overall dimensions similar to straight tray sections. Rungs and Bottoms: Rung and Bottom designs are identical to similar straight cable tray

100+ Essential Questions Answered About Cable Trays:

Discover over 100 expert answers about cable trays, covering key topics like material selection, load capacity, installation methods, and maintenance.



Criteria for Sizing, Designing, Installing and Supporting of Cable-Tray

Cable-tray systems include ladder type, troughs, channels, solid-bottom trays, and other similar structures. 4.2 Zero-tangent fittings: When referring to cable-tray fittings, a tangent is a straight

Cable tray manual

Where cable tray wiring systems with current carrying conductors are installed in a dust environment, ladder type cable trays should be used since there is less surface area for dust buildup than in



B-Line series Cable Tray Design Considerations

Is your cable tray system optimized for safety, dependability, space and cost savings? Cable tray (or cable ladder) systems are a popular alternative to electrical conduit systems, as they have an

What are the main types of cable tray?



Solid bottom cable tray is also called as cable trunking or trough type cable tray, typically made from galvanized steel or sheet metal. As the name



Choosing the Right Electrical Raceways: A

In this comprehensive guide, we will delve into the world of electrical raceways, conduit, cable trays, and electrical fittings, exploring their definitions,

Cable Tray Type Selection

Ladder cable tray is used for about 75 percent of the cable tray wiring system installations. It is the predominate cable tray type due to its many desirable features: A ladder cable tray without covers



Cable Tray System Overview - PAKTECHPOINT

Cable tray is designed to be used in place of conduit pipe. In other words, instead of feeding each electrical cable through a length of metal conduit pipe, the cable is



What Is A Cable Tray? 5 Types Of Cable Trays

Trough Cable Trays Description: Trough trays have a partially enclosed design with ventilation slots or holes along the base, providing a balance between support, protection, and airflow.



Type of Tray Cable and Benefit of Cable Trays

Regardless of the type of tray cable you need for your job, the cable you will find at EWCS Wire will be of the highest quality - but more on that shortly. Advantages of Cable Trays Now

Cable Tray Systems: A Complete Guide to Types

Trough (Ventilated) Tray: Features a ventilated bottom, offering a balance between the strength of a ladder tray and the protection of a solid



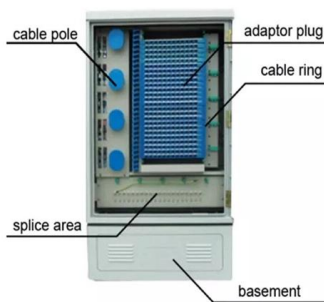
Cable Tray Technical Guide A practical guide to product selection and

Cable tray is considered to be a system. It must provide continuous support for cables, and the electrical continuity of the cable tray system must be maintained.



MOD 7 Flashcards , Quizlet

When cable exits downward from a tray without a dropout plate, which of the following could occur? a. Current surges b. Reduced amperage c. Voltage surges d. Insulation damage



Types of Cable Trays - Advantages, Applications and Sizes

Explore the types of cable trays, their advantages, applications, and standard sizes. Learn how they improve cable management and support various industries.

Cable Tray Type Selection

What type of cable tray should be used for the main runs of a cable tray wiring system? The cable tray types to choose from are ladder, ventilated trough, or solid bottom.



Types of Cable Trays - Purpose, Advantages,

Cable tray is alternatives to wire ways and electrical conduits, which completely enclose cables. Study types of cable trays, purpose, advantages.



Cable tray

A solid-bottom tray provides the maximum protection to cables, but requires cutting the tray or using fittings to enter or exit cables. A deep, solid enclosure for cables



Cable Tray Technical Guide A practical guide to product selection and

SOLID-BOTTOM CABLE TRAY Providing additional cable protection, solid-bottom cable tray is sometimes preferred to support and protect numerous small instrumentation and control cables.

Types of Cable Trays - Purpose, Advantages,

Cable trays are components of support systems for power and communications cables and wires. A cable tray system supports and protects



Types of Cable Trays: Ladder, Perforated, Basket, Solid

Explore all types of cable trays--ladder, perforated, basket, solid, and channel. Learn their uses, materials, pros, cons, and key differences.





NEC Article 392 Guide: Ensuring Compliance for Cable

The primary rulebook used in the safe use of cable trays is NEC Article 392. This is a description of how to select, install, and support these metal



Contact Us

For datasheets, pricing, or custom high-speed optical interconnect solutions, please visit:
<https://www.syropy.com.pl>