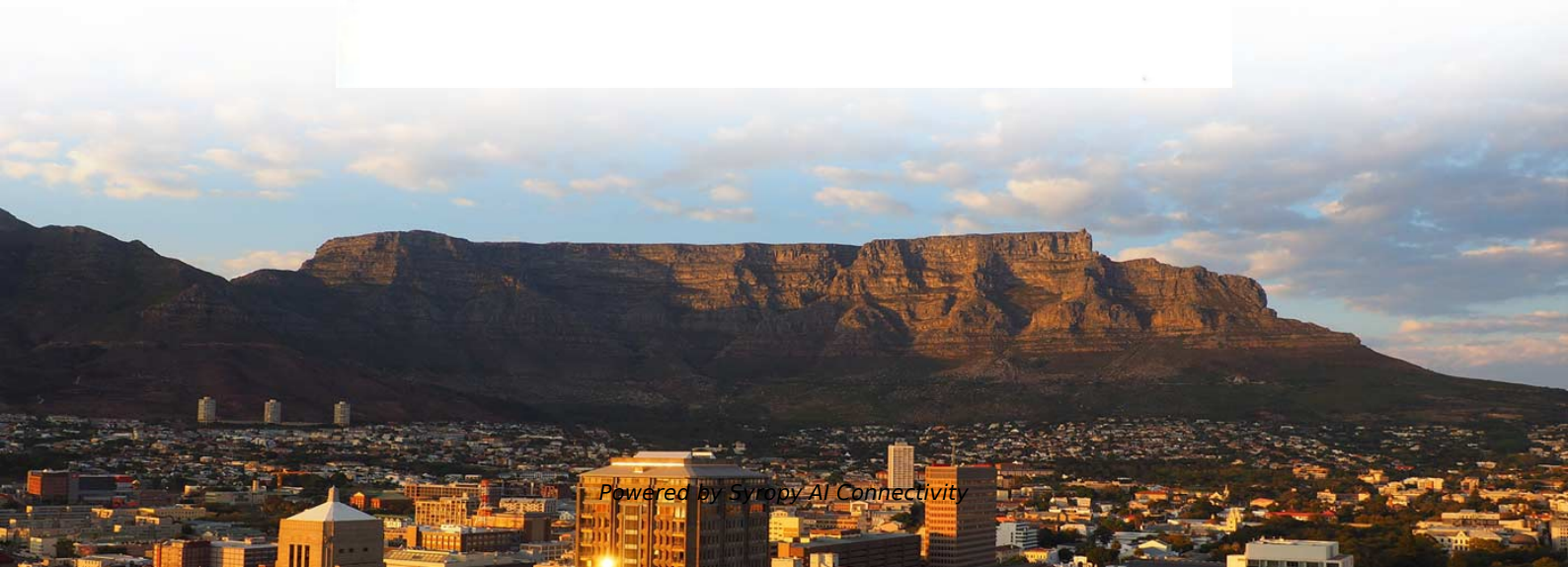


Tips for matching electrical wires to switch in distribution boxes





Overview

Practice good wiring: secure grounding, neat cable management, proper insulation, and correct wire gauge and breaker size. Include protection devices like breakers, fuses, and surge protectors—each circuit should have its own protection. Circuit breaker wiring configurations involve organizing main switches, busbars, and branch breakers within a distribution box. An electrical panel box, also known as a breaker box or a distribution board, is a crucial component of any electrical system. It serves as a central hub for distributing electricity throughout a building, ensuring that power is delivered safely and efficiently to all the required locations. The distinction between 1P and 2P circuit breakers plays a pivotal role in determining the appropriate protection level for various circuits. Connection method: Each switch takes a wire from the incoming point and connects it to the incoming end of the switch, or uses parallel connection to reduce the difficulty of wiring.



Tips for matching electrical wires to switch in distribution boxes

Product parameters



Wiring a Breaker Box

Wires: Electrical wiring connects your panel to your circuits and devices. A Word of Caution Working with electrical panels is inherently



Understanding Distribution Boxes: A Comprehensive Guide

A distribution box, also known as a power distribution box or electrical distribution box, is used to distribute electrical power safely to multiple

Complete Guide For Distribution Boxes Types

Distribution boxes, also known as electrical distribution boards or panels, are pivotal components in electrical systems, ensuring the safe and organized distribution of

Ordering information

NO.	1	2	3	4	5	6
Model	SP1201	SP1202	SP1601	SP1602	SP1203	SP1204
Product name	Patch Panel	Patch Panel	Patch Panel	Patch Panel	Patch Panel	Patch Panel
Illustration						
NO.	1	2	4	1	2	4
Maximum number of cores	144	288	576	144	288	576
Product size (including module and assembly)	482.87*311*104 mm	482.87*311*181 mm	482.87*311*177 mm	482.87*311*174 mm	482.87*311*181 mm	482.87*311*177 mm
Standard color code	6AL/005	6AL/005	6AL/005	6AL/005	6AL/005	6AL/005

How to Wire a Home Distribution Box

In this video, we'll walk you through the process of wiring a home distribution box with a detailed connection diagram. Whether you're an electrician



The installation requirements for the distribution box

Introduction
Understanding The Components of A Distribution Box
Selecting The Right Distribution Box
Site Preparation and Location Requirements
Electrical Connections and Wiring
Compliance with Standards and Regulations
Conclusion
A distribution box is a crucial part of any electrical system. It's divided into two main sections that work together to keep everything running smoothly and safely. See more on eabel Published: Feb 7, 2025 wiringmaster

A Step-by-Step Guide to Wiring an Electrical Panel Box

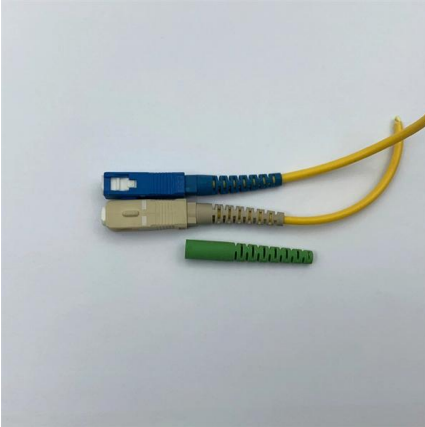
See More

Find out how to properly wire an electrical panel box with a comprehensive diagram and step-by-step instructions.

Understanding Distribution Boxes: Your Guide to Power

What are Distribution Boxes and Their Importance? What are Distribution Boxes and Their Importance? Distribution boxes, or electrical junction





Summary of key points for construction and installation of distribution

The construction and installation points of distribution boxes and switch boxes are summarized as follows: 1. Select qualified products that meet national standards and safety requirements.

Distribution Box Wiring Steps

?Wire specification?: Select the appropriate wire specification according to the circuit load. The lighting and socket circuits generally use 2.5mm² wires,



The Ultimate Guide to Circuit Breaker Wiring

Master the safest and most efficient circuit breaker wiring configurations. Learn about single-phase vs. three-phase setups, safety standards, and future-proof electrical

unsupervised_topic_modeling/topics/en/15/100/50/topics at master

Contribute to annontopicmodel/unsupervised_topic_modeling development by creating an account on GitHub.





Wiring a Switch and Outlet the Safe and Easy Way

Play it smart and stay safe when wiring receptacles and switches by following these tips from experts in the field.



How to Choose a House Distribution Box , CHINT global

A well-chosen distribution box ensures the safety and efficiency of your household electrical system. This article guides you through selecting a



The Complete Guide to Distribution Box: Installation, Types & More

The main switch, or main breaker, controls the entire electrical supply to the distribution box. This large switch allows you to disconnect all power to the building during emergencies or



Neat Wiring: Dress Your Breaker Panel Like a Pro!

Watch as we demonstrate each stage--arranging wires, placing breaker columns, and setting up voltage monitoring tools--so you can confidently handle your breaker panel or electrical box.





How to Wire an Electrical Switch Box: Step-by-Step Guide

Learn how to properly wire an electrical switch box for safe and efficient wire operation in your home or building. Get step-by-step instructions and tips.



Organizing a Panel Box

PRO TIP: Adding a circuit is easy in a well-organized panel because like-wire groups tend to be installed in layers. Ground wires, installed first, are the bottom layer;



How to Install a Cable Distribution Box Safely and

Reliable cable distribution boxes ensure safe, efficient power management for residential, commercial, and industrial systems. Learn

Distribution Box Installation: A Complete Guide to Safe

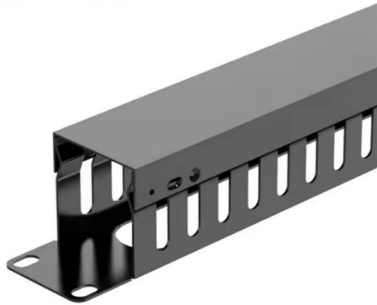
Proper installation of a distribution box ensures electrical safety, efficiency, and reliability. In this comprehensive guide, we'll cover everything you need to know





How to Wire a Single Phase Breaker Box: Step-by-Step

Learn how to wire a single phase breaker box with a wiring diagram. Understand the different components and connections involved in setting up a safe and efficient



How To Connect A Distribution Box

Learn how to connect a distribution box with this easy-to-follow, step-by-step guide. From tools and materials needed to common installation mistakes and solutions, this comprehensive article will



Requirements And Specifications For Installation Of

In flammable and explosive environments, explosion-proof distribution boxes should be selected and explosion-proof treatment should be carried out.



Step-by-Step Guide to Wiring a 3 Phase DB Box

Learn about the wiring process for a 3 phase distribution board (DB) box, including the necessary steps and safety precautions. Understand how to connect the



The installation requirements for the



How to Wire a Home Distribution Box - Step-by-Step , Distribution DB box wiring diagram
Welcome to our channel! In this video, we'll walk you through



Wiring of the Distribution Board From Energy Meter to

How to Wire a Distribution Board? Distribution Board also known as "Panel Board", "Switch & Fuse Board" or "Consumer Unit" is a box installed in the building



Contact Us

For datasheets, pricing, or custom high-speed optical interconnect solutions, please visit:
<https://www.syropy.com.pl>