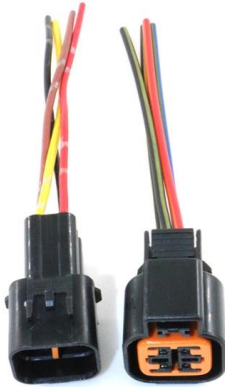


Three-year warranty on 25G optical line terminal





Three-year warranty on 25G optical line terminal

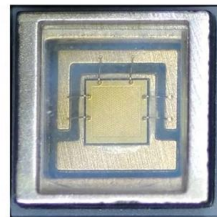


Lifetime Warranty , Your Fiber Optic Solution , Proline

With respect to all transceivers that are designed to reach 80 kilometers or further, or for any custom made Proline part, the serviceable lifetime is 3 years. With respect to non-Proline Options-branded

Optical Line Terminal

Manufacturer of Optical Line Terminal - 4 Port Net Link GEAPON OLT, 4 Port Epon Optical Line Terminal, GPON 8 Port Optical Line Terminal and 4 Port Syrotech Optical Line Terminal offered by Dron Edge



PON's Next Success is 25G PON

PON is a widely deployed technology, supporting more than 680 million homes around the world, with forecasts of adding 30 million more households, per year, for at least the next five years. PON's

25G optical modules for your network

A practical guide to selecting and implementing 25G optical modules based on network needs and equipment compatibility.



Optimizing Network Upgrades with FS 25G SFP28 Modules

After comparing the key parameters of the 25G, 10G, 40G, and 100G optical modules in various network layers, we can clearly see the distinct advantages of the 25G solution in network



Optical Line Terminal

Manufacturer of Optical Line Terminal - 4 Port Net Link GEPON OLT, 4 Port Epon Optical Line Terminal, GPON 8 Port Optical Line Terminal and 4 Port Syrotech



QUANTA QCT Next-Generation 25G ToR Switch for Datacenter and

To meet the requirements of high performance, high availability, fast scale out, low latency performance, and continuous serviceability in data center applications, the QuantaMesh BMS product line is the





GenAssurance SM Product Warranty

Products covered are Voice and Data Communications cables, including Category 3 cable and higher, Fiber Optic cables, Central Office cables (e.g., switchboard cable), Terminating cable, and



Cisco 25GBASE SFP28 Modules Data Sheet

Cisco SFP28 to SFP28 Active Optical Cables are direct-attach fiber assemblies with SFP connectors. They are suitable for very short distances and offer a cost-effective way to connect within racks and



SFP28 25G SR Optical Modules: High-Performance Network Solution

SFP28 25G SR optical modules provide a high-performance, cost-effective, and scalable solution for modern networking. Designed for short-distance high-speed data transmission, they are essential in



[Hot Item] 3 Years Warranty 25g SFP28 Bidi 20km 1270/1330nm LC

The SFP28-25G-BX20-L27/33 is a single-channel, pluggable, fiber-optic SFP28 transceiver module for 25G Ethernet and InfiniBand EDR applications. It is a high performance module for short-range data



Optical Line Terminal Hsgq-G02 Olt 2 Ports Gpon Olt

Optical Line Terminal Hsgq-G02 Olt 2 Ports Gpon Olt, Find Details and Price about Gpon Olt Olt Gpon from Optical Line Terminal Hsgq-G02 Olt 2 Ports Gpon Olt -

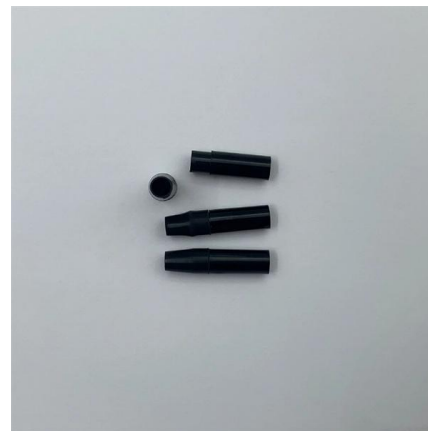


3 Year Warranty & 30-Day Money-back Guarantee

Optcore warrants to the original customer or purchaser that each of its fiber optic products, and all components thereof, will be free from defects in material and/or workmanship for three years from the

25GBASE-ER SFP28 1310nm 40km Transceiver Datasheet , FS

Description FS's SFP28-25GER-31 is a very compact optical transceiver module converts 25Gbit/s serial CML electrical data into serial optical data compliant with the 25GBASE-ER standard. The SFP28



OLT-2300 GEAPON Optical Line Terminal User`s Guide

OLT-2300 GEAPON Optical Line Terminal User's Guide Version 1.00 10/2007 Edition 1 About This User's Guide About This User's Guide Intended Audience This manual is intended for



Warranty and Training Certificates

Communication Markets Division 25-year Cabling System Warranty, Training and Qualification Process Warranty Summary



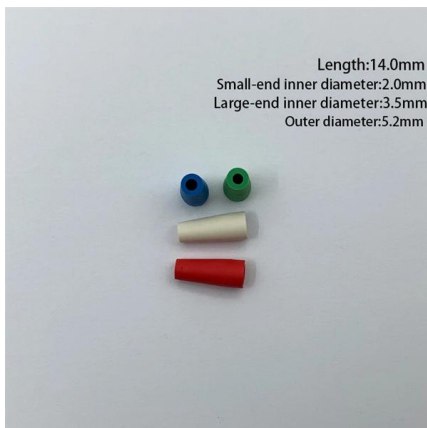
WebiTelecomms Cabling

What Is an OLT? , Definition, Function & Role in GPON Networks 2025

Introduction - Why OLT Matters in Modern Fiber Networks In the age of fiber-to-the-home (FTTH) and ultra-broadband connectivity, the Optical Line Terminal - or OLT - is one of the most

25G SFP28 LR Transceiver: 10km Reach Optical

Experience reliable 25G data transmission with Innoptical's SFP28 LR transceivers. Reach up to 10km and ensure seamless interoperability for your long distance



What Is an OLT? , Definition, Function & Role in GPON

What is an OLT? Definition: An Optical Line Terminal (OLT), also called an Optical Line Termination, is a network device located at the service



Arista 25G Transceivers and Cables

Yes, Arista 25G SFP ports allow the flexibility to run multiple speeds and support a full range of 10G SFP+ optical modules.



25/50Gbps Passive Optical Network (PON)

WDM PON such as 25G-6Ch-CWDM, 25G-12 Ch-MWDM, 25G-12 Ch-LWDM, 25G-20 Ch-DWDM PtP links in O-band and 25G WDM PtP PON links in C/L band and 25Gb/s new line rate in C/ L Band

3-Year Warranty 25G SFP28 OCP 3.0 Optical Network Card 4 Fiber

3-Year Warranty 25G SFP28 OCP 3.0 Optical Network Card 4 Fiber Ports for Server Network with E810-CAM2 Chip



Genuine Cisco SFP-25G-AOC3M

Cisco SFP28 to SFP28 Active Optical Cables are direct-attach fiber assemblies



You Should Know About 25G Transceivers and Cables

You Should Know About 25G Transceivers and Cables FAQs Q1: What is SFP28? A: SFP28 is the standard form factor of 25G optical modules. Its



New Original C600 10g DC Gpon Epon C600 Xgspon

Original ZXA10 C600 GPON/EPON XGSPON XG-PON OLT Optical Line Terminal * The ZXA10 C600 is a piece of large-capacity optical access equipment based on

The Ultimate Guide to a 25-Year Structured Cabling Warranty: Is Your

When you see a "25-Year Warranty" for structured cabling, it sounds like a set-it-and-forget-it insurance policy for your network. But in reality, this warranty is more like a certified performance validation



OLT (Optical line terminal) , G-PON (Gigabit passive

A gigabit passive optical network (G-PON) comprises optical line terminals (OLTs) and optical network units (ONUs), and Murata's lineup of products for use in



ITU-T Rec. L.25 (01/2015) Optical fibre cable network maintenance

Summary Recommendation ITU-T L.25 deals with general features in relation to the maintenance and operation of optical fibre cable networks. This is the latest revision of a Recommendation that was



Cisco 25GBASE SFP28 Modules Data Sheet

Cisco SFP28 to SFP28 Active Optical Cables are direct-attach fiber assemblies with SFP connectors. They are suitable for very short distances and offer a cost-effective way to connect within racks and



Contact Us

For datasheets, pricing, or custom high-speed optical interconnect solutions, please visit:

<https://www.syropy.com.pl>