

Thickness of cable trays upon arrival inspection





Thickness of cable trays upon arrival inspection

An Extensive Library of Self-Developed Products



METHOD STATEMENT FOR CABLE TRAY AND

Supports for Tray / Trunking (spacing) shall be as per standard practice and manufacturer's recommendations. o Additional support shall be

Instrumentation Cable Tray Installation Checklist and

Step-by-step instrumentation cable tray installation guide with safety tips, standards, inspections, and downloadable Excel checklist.



IEC Standard for Cable Tray: Complete Technical Guide

All trays must undergo salt spray tests and coating thickness tests to ensure the coatings meet the durability levels required under the IEC standard for

Technical Specification for Cable tray installation and cable laying work

Approval of IPR shall be obtained for site preparation and marking the cable tray routes and locations of cable tray support before proceeding with the erection and installation work.



FTTH BOOK-TYPE TERMINAL BOX

Sleek Design. Reliable Connectivity.



COMPACT & DURABLE

EASY INSTALLATION

Cable Tray Technical Guide A practical guide to product selection and

The choice of method should be discussed with a local inspector. The best decision may be to extend only the cables, creating a discontinuity in the cable tray.

GUIDE CABLE TRAYS TECHNICAL

NEMA VE 1-2017 Specifies requirements for metal cable trays and associated fittings designed for use in accordance with the rules of Canadian Electrical Code, Part I and the National Electrical Code®



Cable Tray Inspection and Testing Plan

This document is an inspection and test plan for the installation of cable trays and trunkings at the Paris Gallery area of Marina Mall in the United Arab Emirates. It

Cable Tray Installation Quality Assessment Guide



A well-installed cable tray ensures that cables are kept secure, organized, and protected from damage while offering easy access for

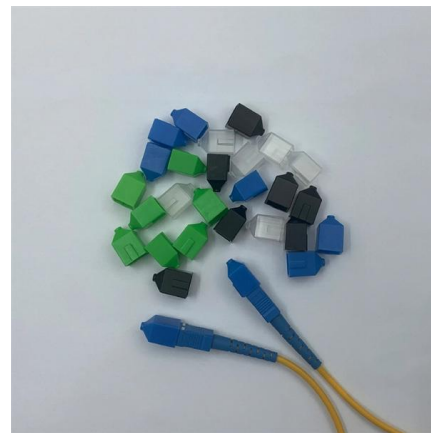


Cable Tray Dimensions Guide: Standard Sizes, Tray

Explore standard sizes by tray type, understand width and depth limits, and see how to calculate and choose compliant cable tray sizes for real projects.

Cable Tray Inspection Checklist Report , PDF , Wire

The document is a field inspection report for the installation of cable trays, conduits, and trunking. It includes checklists to inspect items like cable tray sizing and



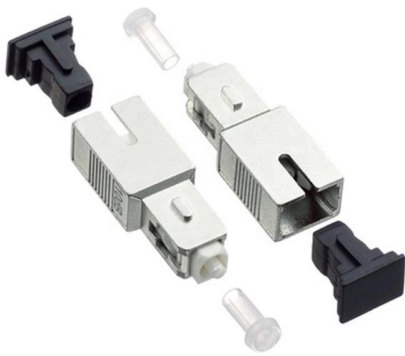
Compliance Requirements for Instrument Cable Trays

Installing instrument cable trays properly and in compliance with relevant standards is crucial to ensure safety, functionality, and durability. Below is a detailed guide



Cable Tray Installation Method Statement

Below is the detailed cable tray installation method statement not only for cable tray but also applicable for GI ladder and trunking for indoor and outdoor applications



Codes and Standards , Cable Tray Institute

Covers construction and test requirements for continuous, complete nonmetallic systems of ladder, ventilated, solid bottom cable trays, or channel type trays, intended for the support of power or

Cable Tray Inspection Checklist , PDF

This document is a checklist for the inspection of cable trays used in a project. It includes various criteria such as the make, type, size, and thickness of the cable



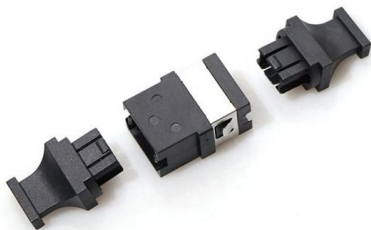
Cable Tray Installation Checklists

These are the complete quality inspection checklists that include cable tray installation checklists, in addition to conduits and cable ladder installation



Cable Tray Quality Assurance Plan

This quality assurance plan outlines the inspection process for cable trays. It details the raw materials, components, and characteristics that will be checked at various stages of production. Checks include

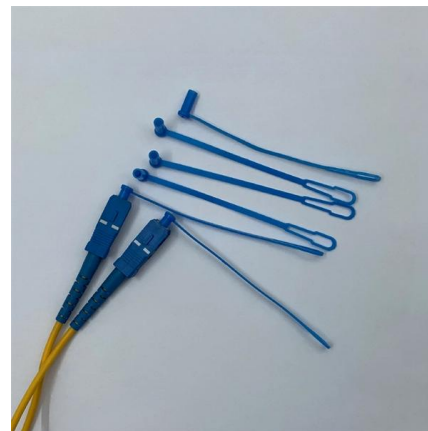


Inspection Methods for Cable Trays: A Comprehensive

In this detailed guide, we'll explore the essential inspection methods

Cable Installation Inspection And Test Plan (2024)

Cable Installation Inspection And Test Plan
Lingsheng Yao Content Method Statement for the Installation of Cable Tray, Trunking, and Mark the location of installation and install the approved



4-port 8-core LC wall-mounted fiber terminal box (empty frame)

Surface painted Scientific plate fiber Cold-rolled steel plate



Lifetime quality assurance

Free shipping

Customizable for telecommunication

NEC Standards for Cable Trays: Grounding, Fill Capacity

These trays are ideal for use in commercial offices, industrial facilities, data centers, and smart building infrastructure, where reliability, accessibility, and efficient cable management are



Cable Tray Inspection Checklist for Safety and Efficiency

Dimensions and Sizing o Tray width and depth should suit the size and quantity of cables. o Metal thickness must comply with design drawings and specifications.



Cable Tray Technical Guide A practical guide to product selection and

A practical guide to product selection and installation This guide for engineers and installers has been developed by ABB as a practical reference regarding cable tray characteristics, installation, and



Cable Tray Systems: Requirements and Best Practices

11. Inspection, Maintenance, and Modifications One of the advantages of cable tray systems is ease of inspection and modification, but this requires a structured maintenance approach:



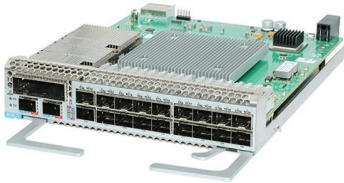
Cable Tray Inspection Checklist for Safety and Efficiency

Cable Tray Inspection - Key Technical and Structural Considerations When inspecting cable trays, several technical and structural aspects must be checked to ensure safety, efficiency, and



Safely Installing, Maintaining and Inspecting Cable Trays

A generic guideline developed by the Cable Tray Institute indicates that cable trays should not be filled in excess of 40-50% of the inside area of the tray or of the tray's maximum weight based on the cable

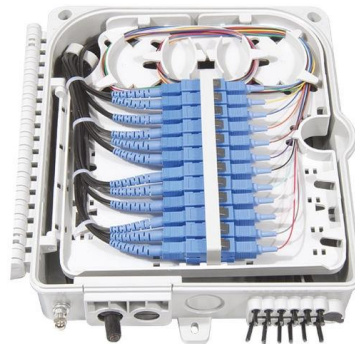


Cable Tray Installation Procedure Guide

This document provides procedures for installing cable trays according to international standards. It describes inspecting and storing cable trays upon

Aramco Cable Tray Inspection Guidelines

The document is a checklist for inspecting cable tray materials upon receiving. It lists acceptance criteria for general electrical material requirements and specific



Contact Us

For datasheets, pricing, or custom high-speed optical interconnect solutions, please visit:
<https://www.syropy.com.pl>