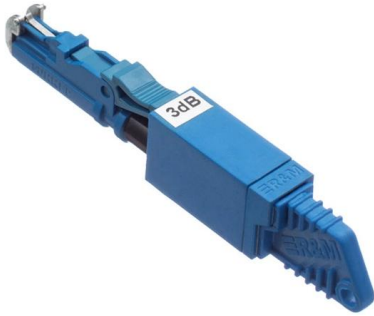


There is no light at the other end of the pigtail





There is no light at the other end of the pigtail



What is a Pigtail Connector? A Complete Guide

A pigtail connector is a small wire that makes a big difference. It's a short wire with a connector installed on one end, such as a spade or ring

How to Pigtail an Outlet for a Safer Connection

A pigtail is a simple wiring technique used when installing electrical outlets, switches, or other devices inside a junction box. This method involves connecting the circuit's main wires to a



How to Make Pigtail Electrical Wire Connections

How a Pigtail Works Credit: The Spruce / Kevin Norris A pigtail wire is a short length of wire, with one end used to connect to a screw terminal on an

Understanding Electrical Wiring: What Is Pigtail?

Understand 'what is pigtail in electrical wiring' in our detailed guide. Get a better grasp on electrical wiring concepts.

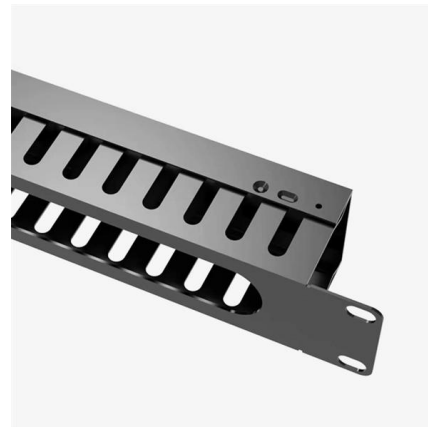


Latest news & breaking headlines , The Times and The

The latest breaking UK, US, world, business and sport news from The Times and The Sunday Times. Go beyond today's headlines with in-depth

passman/js/vendor/zxcvbn/zxcvbn.js.map at master · nextcloud

? Open source password manager with Nextcloud integration - nextcloud/passman



What Is a Pigtail Light Switch and How Do You Wire One?

A pigtail light switch utilizes a short, intermediary wire to create a more robust connection between the switch and the main circuit conductors. This technique is widely used by professionals



ifm efector O6H206 Diffuse sensor, 2-200mm range, 3wire DC NPN,

The clearly defined consistent light spot ensures precise object detection. There is no scattered light which could interfere with other photoelectric sensors in close vicinity. Diffuse reflection sensors

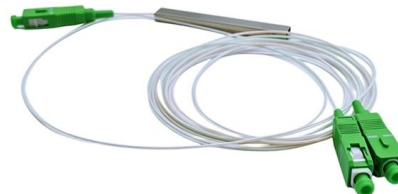


How to Make Pigtail Wire Connections , Angi

A pigtail is the only safe way to connect an electrical device to more than one circuit wire. Connecting multiple wires to a single screw terminal is

What Is a Pigtail in Electrical Wiring?

Splicing the Circuit Wires The other end of the pigtail is joined to the main circuit wires of the same color, such as all the black (hot) wires in the box. The bare ends of the pigtail and the



How to Replace a Defective Electrical Switch or Outlet

Remove the outlet or switch cover plate. Traditional outlet plates usually have one screw per outlet (but some - including GFCIs - have two) and switch plates two per switch. There may be multiple switches or outlets in one box, but you can replace just one if needed. If you need to replace more than



Nagaland News, India News, Northeast News

The Morung Express brings the Latest News, Top Breaking headlines on Politics and Current Affairs in Nagaland India and around the World, Naglaand News, Naga



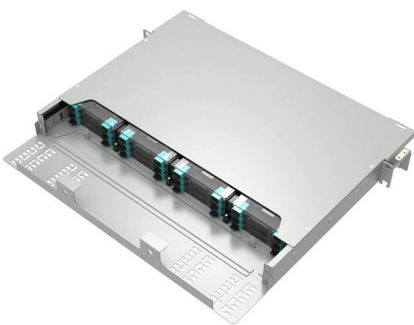
Off road light wiring issue and Name this electrical pigtail

Adding the relay is most certainly a good idea, though if there's another issue at the lights, it may not fix the problem you were having with only



Pigtailed switch from outlet

From this wire, I plan to connect it to an outlet to provide power. Additionally, I'll have a switch in the same box to control a light fixture. The hot wire from the 14/2 will provide power to the



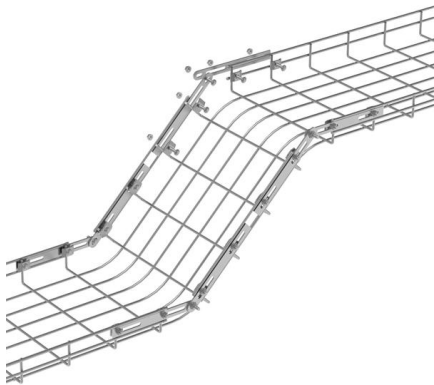
electrical

Use 3-port wire connectors to connect the existing wires and a new pigtail wire (looks like aluminum wiring) from a new led pull chain lamp (alternate



faker/internet.go at master · pioz/faker · GitHub

Random fake data and struct generator for Go. Contribute to pioz/faker development by creating an account on GitHub.



What is a Pigtail Connector? A Complete Guide

What Is a Pigtail Connector? A pigtail connector is a small wire that makes a big difference. It's a short wire with a connector installed on one end,

cs-178-project/imdb.vocab at main · apmalani/cs-178-project

Contribute to apmalani/cs-178-project development by creating an account on GitHub.



Application :



such/ignore.txt at main · yeerma/such · GitHub

aasdadasda. Contribute to yeerma/such development by creating an account on GitHub.



What Is a Pigtail in Electrical Wiring? A Complete Guide

Learn what a pigtail is in electrical wiring, why it's essential for safety, and how to make secure pigtail connections step by step.



No current after pigtailed light was removed

I removed a light that was pigtailed in after I did that I don't have any current running through the wires in the ceiling (its on the end of a circuit or



1075KWHH ESS

Electrical Pigtails

Q. When does the electrical code require pigtails for connecting devices in residential wiring?A. Ben Giles, licensed electrician and owner of



Question about pig-tailing : r/electricians

If you don't pigtail, the current has to go through every device to get to the next device. If you lose a connection in one of the devices, you lose it in all the other devices as there's no longer a closed circuit.



Trailer Lights Don't Work? Check Pigtail or Electrical Cord

If the trailer lights don't all work, he checks the electrical cord or pigtail -- at both the tractor and trailer ends -- to make sure that it is plugged in all the way.



Contact Us

For datasheets, pricing, or custom high-speed optical interconnect solutions, please visit:
<https://www.syropy.com.pl>