

The two core switches serve as backups for each other





Overview

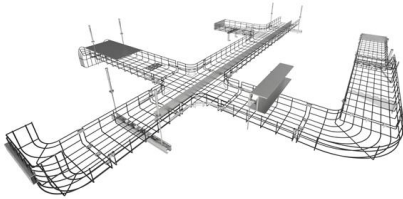
In smaller networks, you usually find one core switch, sometimes two for backup. Their job is to move data quickly and they use high-speed interfaces and advanced technology to connect large areas. according to my knowledge, I have to make root bridge switch as active and other switch as the standby switch. A core switch in networking serves as the high-capacity backbone, italic centralizing data flow and ensuring efficient communication between different network segments. With the Fortinet solution for integrated networking using FortiLink, the core layer always comprises a set of two to four FortiGate devices and two very high-speed FortiSwitch units, which support a large number of 100-GbE and/or 40-GbE ports with enough capacity to grow the links between them and.



The two core switches serve as backups for each other

Network Switch Components and Technical Analysis

A Network Switch is one of the essential devices for building modern networks, capable of enhancing network performance and reliability, providing stable and efficient data transmission services for



News

In the event of a switch failure within a core or dual aggregation switch setup, the system can quickly transition to backup measures, ensuring seamless



Routing on firewall or core switches? : r/networking

On Fortigate or core switches. In my research I'm getting mixed suggestions - Some say that core switches are for routing, when others say that core switches have to be as fast as possible and have

Core layer , FortiSwitch 7.6.0 , Fortinet Document Library

With the use of a core layer, each aggregation switch only needs 2x100-GbE links, and the core layer is the only place where you need large numbers of 100-GbE ports.



Best way to create redundancy with 2x layer 2 Cisco

Hi, I have the below set up that and I'm trying to work out the best way to make the switches redundant so if one fails, comms are still available for



What is optimal way to connect two core switch/routers

We have two 4507s at our core, running HSRP. We have three other 4507s at the edge, plus eight 2950s. All edge switches and WAN routers are connected to both core 4507s. We have a Port-Group



Cisco 6504E : two core switches

If you have a layer-2 link (trunked) between the 2 switches, you can use VRRP or HSRP to provide redundancy for user vlans. This way, if one switch fails, you have a second one to forward



Core Switches and Normal Switches: A Practical

In modern network infrastructure, switches play a pivotal role in connecting devices and facilitating data transfer. However, not all switches are



Understanding Core Switch: What It Is and How to

Core switches are critical for establishing a fast and reliable network architecture through high-speed data forwarding. Typically, core switches are

Solved: core switch redundancy

Hi, school with around 800 users having one core switch 6509-E sup-720 (inter-vlan routing) collapsed core design connected to - 30 layer 3 HP



What Is a Core Switch?

A core switch is the backbone of a large-scale network, designed to handle massive volumes of traffic with ultra-low latency and maximum reliability. Sitting at the top of the hierarchical model, core

Data Center Switches: A Comprehensive



Overview

Data center switches are integral to the architecture of any data center, serving as the central hub for managing and directing data traffic. These

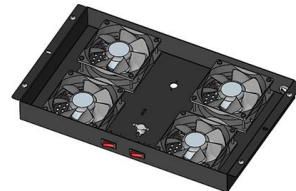


What Is a Core Switch in Networking?

Unlike access switches, which connect directly to end-user devices, the core switch focuses on aggregating and routing traffic between other

Understanding the Core Switch: Key Differences and Uses

This article will discuss critical aspects of core switches, including their essential functions, distinctions from other switches within the same



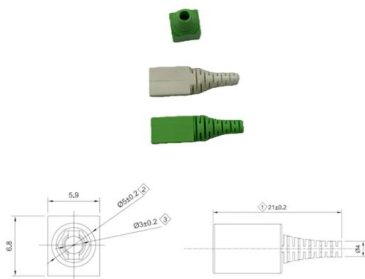
Core switch definition - Glossary , NordVPN

A core switch is the primary switch in a network, built to transfer data fast. A core switch sits at the top of a network's structure.



Solved: redundancy in core layer

In the core layer, I want to have redundancy, which means that if the main core switch of my network has a problem, the backup switch will automatically enter the circuit.

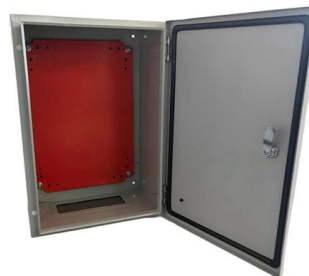


News

In the realm of network engineering, understanding core switches is critical for ensuring efficient data handling and seamless communications. Core switches

Core Switch Explained: Key Functions and Benefits

In smaller networks, you usually find one core switch, sometimes two for backup. They are essential for moving data through the network's core layer. They link to distribution switches which



Switching and Routing Explained: Core Functions,

Learn the key differences between switching and routing, how they work together in telecom and data networks, and why both are critical for performance and security.



What Is a Core Switch in a Network?

This is because they handle less aggregated traffic than the other layers. Distribution Switches Distribution switches serve as the intermediary, aggregating traffic from the access layer.



Replacing one core switch with two new core switches

I will have to replace our old core Cisco switch C4506-E with two new core switches C9500 that will be located in two different server rooms. Currently there is one server room and our

What Is Core Switch?

Core switches, on the other hand, are optimized for high-speed data transfer within a local network. A router could replace a very simple core switch implementation, but it is generally not



Core layer , FortiSwitch 7.6.0 , Fortinet Document Library

Each aggregation switch requires 5x100-GbE links to the other switches. With the use of a core layer, each aggregation switch only needs 2x100-GbE links, and the core layer is the only place where you



Communication through Multiple Switches

Communication through multiple switches is similar to communication through one switch. This article illustrates exactly how it works using two switches.

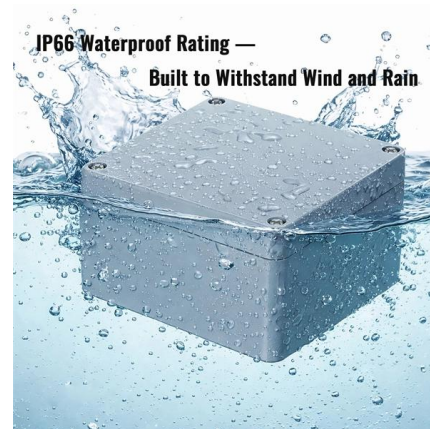


Core Switch

A simplified Helios topology model consists of 64 pods, each with 1024 hosts and two core switches; one for optical circuit switching and the other for packet switching.

Features and Applications of Core Switches

Core Switches typically employ redundant designs, such as dual power supplies and dual engines, ensuring quick switchover and stable network operation in case of device failure.



Cisco Core vs Access Switches: Key Differences

What is the difference between Cisco core switches and access switches? When you're designing a large network, you're going to need multiple different switches,



Core Switch

Servers in a generalized DCell topology have two interfaces each, one connects to its mini-switch and the other interface is connected to another server in a neighboring DCell0.



ITPro Today, Network Computing, IoT World Today combine

ITPro Today, Network Computing and IoT World Today have combined with TechTarget . The page you are looking for may no longer exist.

Core Switches: Key to Reliable, Scalable Enterprise

Discover the essential role of core switches in modern networks. Explore our comprehensive guide to enhance your network's performance and



Contact Us

For datasheets, pricing, or custom high-speed optical interconnect solutions, please visit:
<https://www.syropy.com.pl>