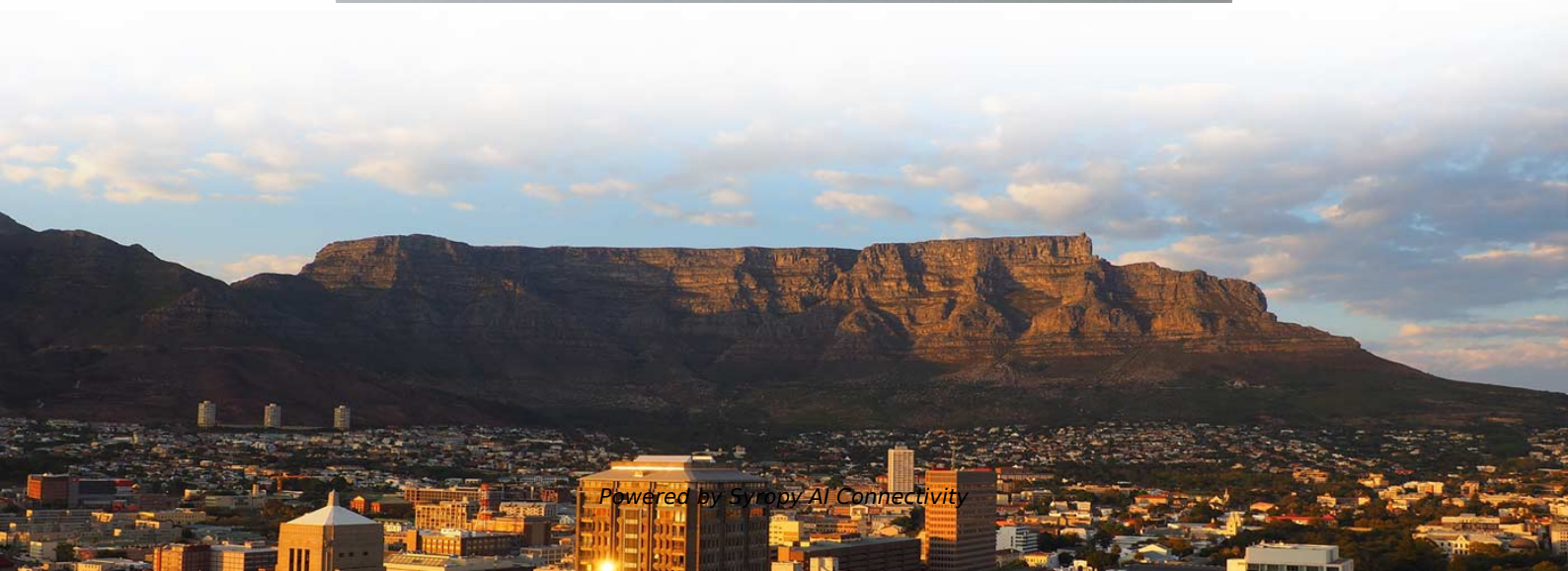


The switch s optical port is normal





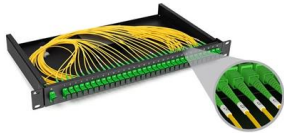
Overview

If optical attenuation is normal but the link still fails, check the switch port settings:

- Some switches use combo SFP/RJ45 ports, which require manual optical port configuration. When optical modules operate on a switch, it is usually necessary to read the module's internal information to understand its working status—such as connection status and real-time metrics like optical power and temperature. This document describes how to troubleshoot fiber optic interfaces by addressing some of the fiber optic module and cabling specifications. Enter the privileged EXEC mode by typing "enable" and providing the enable.



The switch s optical port is normal



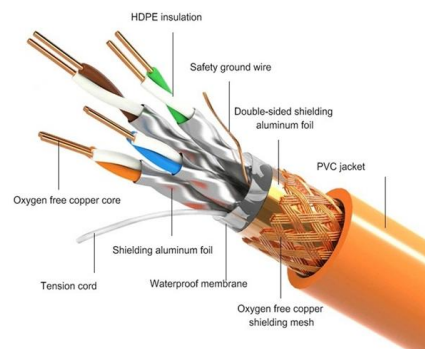
How to Troubleshoot A Fiber Optic Transceiver?

Second, check whether the ports of two network devices in which transceivers need to be inserted are normal through the Loopback test. For instance, connect the two 10G SFP+ ports of the

Troubleshoot Fiber Links on Catalyst 9000 Series Switches

This document describes how to troubleshoot fiber optic interfaces by addressing some of the fiber optic module and cabling specifications.

PRODUCT DETAILS



Differences Between Switch Optical Ports and Electrical

Electrical ports on switches are equipped with integrated electrical port modules, eliminating the need for optical-electrical conversion. The interface



How To View Port Status And Optical Module

When optical modules operate on a switch, it is usually necessary to read the module's internal information to understand its working status--such as



Re: Optical Monitoring not working ICX7450/ ICX7550

Check the same details after upgrading the switch to 8095n. Also try to validate these transceivers on another working switch to check if they are coming up on working switches or they

Uplink Port vs Normal Port on Network Switch

As the central hub of modern network architecture, switches play a critical role in data circulation, and their port configuration directly determines the



What is Differences Between Switch Optical Ports and Ethernet Ports

Common Ethernet port types for switches include 10M/100M/1000M and 10G. Ethernet speeds up to 1000M can be supported by Cat5 or Cat6 cables, while 10G networks require cables of



A Comprehensive Overview of Ethernet Switch Port Types

Differentiate Ethernet Switch Port Types by Data Rates Data rate is a vitally important factor for Ethernet switch interface, and it can usually vary from



How To View Port Status And Optical Module Information On Cisco

When optical modules operate on a switch, it is usually necessary to read the module's internal information to understand its working status--such as connection status and real-time

How To Check If Interconnected Optical Ports Cannot

1. Checking the Optical Module Type Log in to the switch through Telnet or console port to check the switch model. Run the display device command to check the



Troubleshooting , How to Handle Switch Interface Status DOWN

After inserting an optical module, the switch interface indicator does not light up, and the link cannot communicate normally. In device interconnection, this often indicates that the interface failed to start



View the Optical Module Status on a Switch through the

Once the transceiver and fiber optic cable are plugged in properly in the switch optical module, you should be able to view the current information for

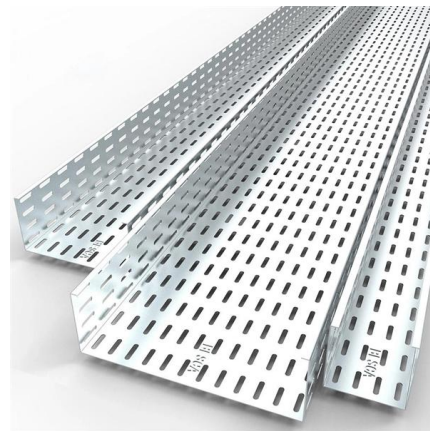


10gig optic port goes down with remote fault, need

I have an extreme switch recently configured, the optical port is not working very good. The link state is always active for a while (couple of hours to couple of days), and then change to link

Light Reading

Light Reading is the leading source of news analysis for communications industry professionals.



How to check fiber ports in cisco switch?

Use the "show interface" command on the switch's command line interface (CLI) to display the status and statistics of the fiber ports. This command will provide



What Is the Optical Audio Port, and When Should I Use It?

Ever wonder what that trapezoidal "optical" audio port is? You'll find these on the back of computers, HDTVs, media receivers, and more, but hardly



Troubleshoot Switch Port and Interface Problems

This document describes how to determine why a port or interface experiences problems.

Dell Networking PowerSwitch Layer 1 optical troubleshooting

Dell does not guarantee that third party or unqualified optics work reliably, or at all. Configuration considerations Port speed, negotiation, and FEC settings must match across the link. For example, if



Optical ports not working , Switching

We are experiencing issues with our optical ports between QFX5100 and EX4300 since we rebooted our EX4300 switch. On our EX4300 the switch port is showing as down when I look at the status and the



What is a Switch Port? A Complete Guide

What is a switch port? A switch port is a physical switch that evolves with the network and the type of transmission media. Connecting different devices



2. Imported design is convenient for expansion.

The design of two inlets saves space and allows for rear line entry.

Fiber ONT Troubleshooting , BroadbandSearch

Optical Network Terminal (ONT) troubleshooting guide: Tackling common glitches, step-by-step fixes, and preventive care for fiber-optic internet.

Troubleshooting Fiber Cables : r/networking

There is a single mode optical fiber cable in our datacenter going from a Cisco N5K to another N5K across different racks. The link appears to be dead and I'm hoping to fix it, but I have little to no



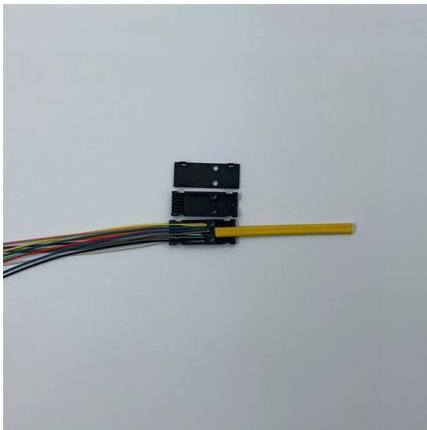
Optical Module Application: Common Problems & Troubleshooting

Most switch brands have specific compatibility requirements, especially when using third-party optical modules. First verify that the module is compatible with your switch. You can confirm

Optical Interface Interconnection Is Abnormal on CE Switches



Possible Causes The optical module model does not match. The transmit or receive optical power of an optical module is not within the normal range. The optical module and optical



View the Optical Module Status on a Switch through the Command

Once the transceiver and fiber optic cable are plugged in properly in the switch optical module, you should be able to view the current information for the optical connection, which helps

Switch Uplink Port and Normal Port: What is the

What is the Switch Normal Port Switch normal ports, also known as downlink or downstream ports, connect access layer devices such as computers,



How To View Port Status And Optical Module

To monitor the operating status of optical modules installed on a switch, it is necessary to read the module's internal information, including link



How to Use the Optical Out (S/PDIF) Port on Your PC

Learn how to make use of the Optical Out (S/PDIF) port on your PC to set up an audio connection, and enjoy the best your audio system can offer.



Contact Us

For datasheets, pricing, or custom high-speed optical interconnect solutions, please visit:
<https://www.syropy.com.pl>