

The role of the core convergence switch



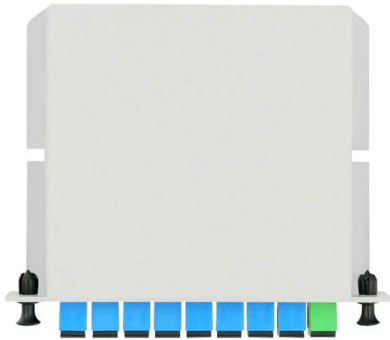


Overview

Unlike edge switches, core switches are the network's backbone, improving data routing and performance. This is essential for businesses, data centers, and ISPs that need fast, reliable connectivity. The primary transmission and routing of data signals take place at the core layer only. A core switch is a high-capacity, high-performance Layer 3 switch positioned at the physical backbone of an enterprise network.



The role of the core convergence switch



Pentagon Elevates AI as Cornerstone of FY2026

Space Force as a Convergence Platform Now in its fifth year, the U.S. Space Force continues to grow its role as the convergence point for deep tech.

Spanning Tree Topology (STP) Convergence

Once the Spanning Tree Topology (STP) is established, STP continues to work until some changes occurs. Manual changes that Network



Features and Applications of Core Switches

With high performance, large capacity, and high reliability, Core Switches offer a wide range of features and play a crucial role in enterprise networks, data centers, and large-scale



Core Switch

A solitary combination of core switches is probably not bolstered the requirement to interface between the core layer and the aggregation layer. In terms of future expectations, this core layer can be used



FS Community

Hier sollte eine Beschreibung angezeigt werden, diese Seite lässt dies jedoch nicht zu.

Data Center Design: Basic 3 Layers, Core, Aggregation,

Data Center Basic Layered Design of Core, Aggregation, and Access The data center network design is based on a proven layered approach, which



What is a Core Switch , Functions and Difference over Normal Switch

It is a powerful backbone switch in the center of the network core layer, which centralizes multiple aggregation switches to the core and implements LAN routing.



Core Switches: The Pillar of Network Infrastructure

Core switches play an integral role in scaling and maintaining network reliability. As the network expands, additional switches and devices can be

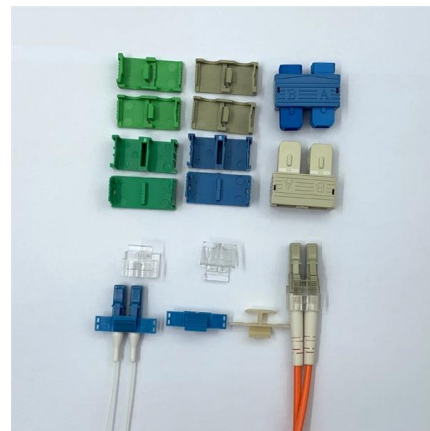


Understanding Core Switch: What It Is and How to

The core switch plays a pivotal role in managing substantial network traffic, necessitating a forwarding rate that typically outpaces that of access and

What Is a Core Switch in Networking?

What Is a Core Switch in Networking?
Understanding the Backbone of Your Network A core switch in networking serves as the high-capacity



Core, Aggregation, or Access Switches? Choose the

Discover the crucial differences between core, aggregation, and access switches. Find out which type can best transform your network's



The relationship between access layer switches,

The convergence layer switch is the convergence point of multiple access layer switches. The function is to uniformly export the access nodes, and



What is a Core Switch?

Understanding its role, functionality, and importance is crucial for anyone involved in network design, management, or security. What is a core switch? It is much more than just another

Pentagon Elevates AI as Cornerstone of FY2026

Pentagon's budget prioritizes AI as a core operational technology, with over \$2.2 billion allocated across military domains.



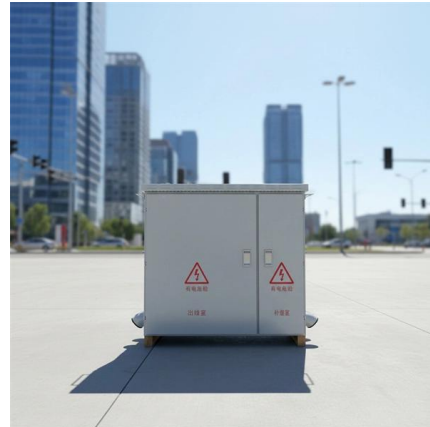
What Is a Core Switch in a Network?

Essential Requirements for Core Switches The specialized role of the core switch mandates specific engineering requirements focused on performance, reliability, and scale. Core



SpaceX and Tesla's Strategic Convergence: Why Musk

Discover why the SpaceX IPO is a strategic booster for Tesla rather than a financial threat. This analysis explores how Elon Musk's \$1.5 trillion



What Is a Core Switch in Networking?

Understanding the role and function of a core switch is paramount for building and maintaining a robust and efficient network infrastructure. By carefully



What Is a Core Switch? Network Backbone Architecture Guide

Discover what a core switch does in a 3-tier network model. Learn about ASIC routing, collapsed core vs dedicated core topologies, and SMB sizing guides.



What Is a Core Switch?

A core switch is the backbone of a large-scale network, designed to handle massive volumes of traffic with ultra-low latency and maximum reliability. Sitting at the top of the hierarchical model, core



What is a Core Switch , Functions and Difference over Normal Switch

What is a core switch and how it works? This article builds the basics of this kind of switch for the ones who don't know anything about it. What is a Core Switch? It is a powerful

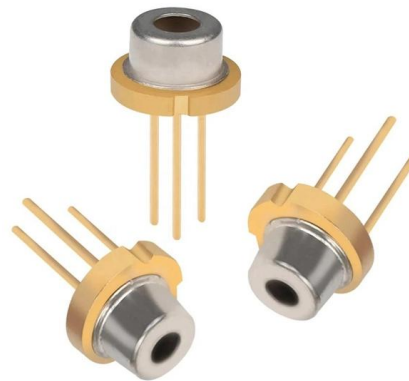


Core Switches: The Backbone of High-Speed Data Networks

Core switches play a critical role in managing and directing data efficiently, providing the high throughput and low latency required in complex network environments.

Core Switch vs. Distribution Switch vs. Access Switch

These data switches are responsible for routing and data switching at the core layer of the network. The data routed and switched by the core switch is carried



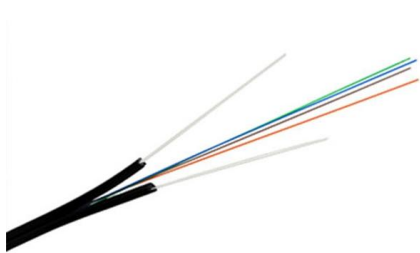
SMB Network Design: Core vs. Distribution vs. Access Switches

Don't overspend on network hardware. Our expert guide explains core, distribution, and access switches so you can design the right network for your SMB.



What Is a Core Switch?

Explore what a core switch does, why it's essential for enterprise networks, and how to choose the right model. Includes real-world applications and Cisco/Huawei/Aruba model comparison.



What is Core Switch and How to Choose?

Discover what a core switch is and learn how to choose the right one for your network. Explore key features in selecting a core layer switch. Make

What Is a Core Switch? Network Backbone Architecture Guide

The Fundamental Role: What Does a Core Switch Do? Think of a core switch as the high-speed interstate highway of your network. It does not inspect the cargo or check driver's



Core Switch Explained: Key Functions and Benefits

Discover what a Core Switch is, its pivotal role in network architecture, and how it boosts performance and reliability in your data infrastructure.



Understanding the Core Switch: Key Differences and Uses

Explore the core switch's role as the backbone of your network. Discover key differences, uses, and insights into layer 3 core switch technology.



Contact Us

For datasheets, pricing, or custom high-speed optical interconnect solutions, please visit:
<https://www.syropy.com.pl>