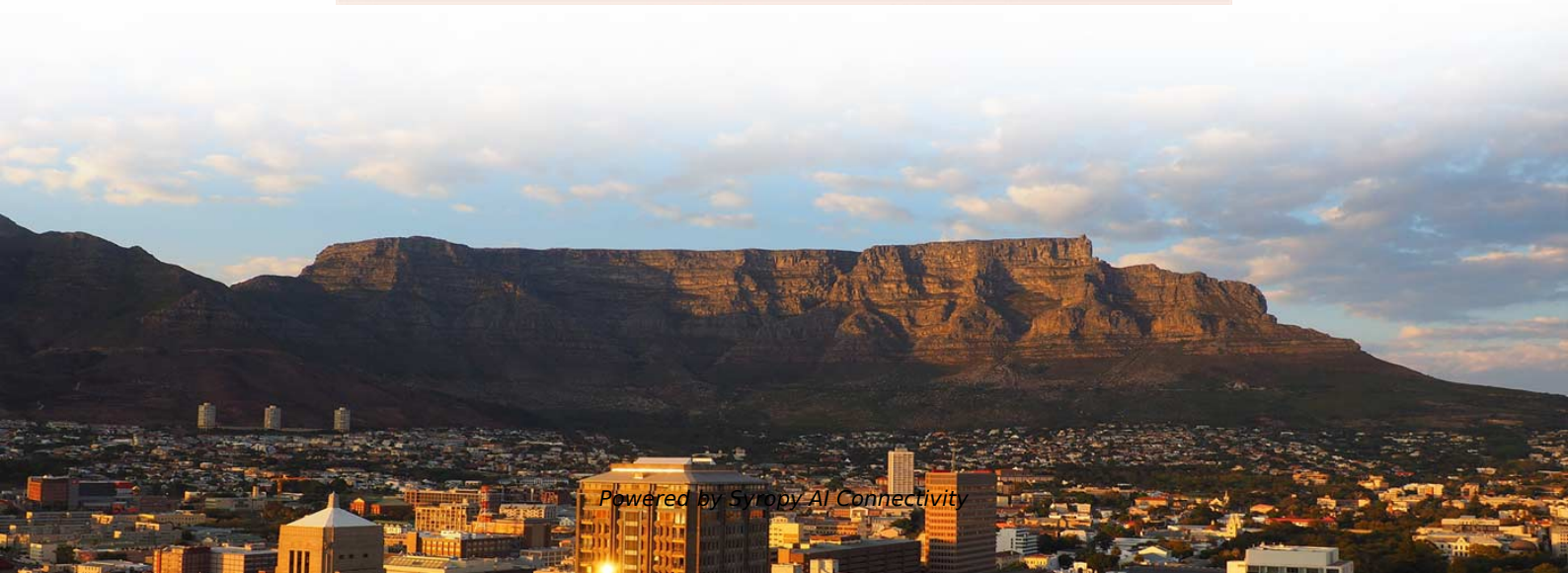


The optical port module is hot-swappable





Overview

The SFP+ port is a high-speed optical-to-optical signal conversion port, mainly used for 10G Ethernet and Fiber Channel network applications. Small form-factor pluggable (SFP) optical modules are compact, hot-swappable, low-speed optical modules. They comply with the specifications defined in the multi-source agreement (MSA) and support synchronous optical network (SONET), Gigabit Ethernet (GE), fiber channel, and other communication.



The optical port module is hot-swappable

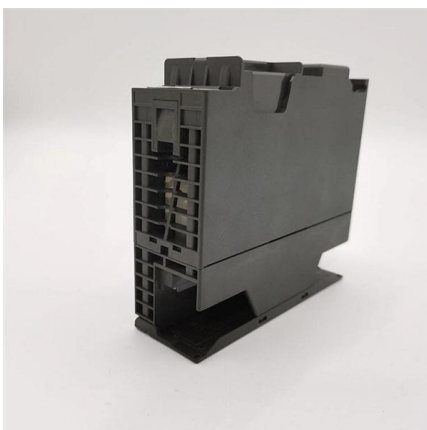


Optical Module Encapsulation Types

Enhanced small form-factor pluggable (eSFP) modules are hot-swappable, low-speed optical modules with the monitoring function. Compared with SFP optical modules, eSFP optical modules support

Differences Between Optical Modules SFP, SFP+, CFP, XFP, QSFP

Compared with SFP+, the transmission rate of QSFP+ optical modules can be up to four times that of SFP+ optical modules. QSFP+ optical modules can be directly used in 40G network



Optical module

An optical module is a typically hot-pluggable optical transceiver used in high-bandwidth data communications applications. Optical modules typically have an electrical interface on the side that

Common Applications of SFP+ Interface

The SFP+ port is a high-speed optical-to-optical signal conversion port, mainly used for 10G Ethernet and Fiber Channel network applications. A key



Haile SFP-GE40-SM1310-A 1.25G Gigabit Single Fiber Optical Module

Product Overview The Haile SFP-GE40-SM1310-A is a high-performance Gigabit single-mode single fiber optical module designed for reliable long-distance data transmission. Operating at 1.25Gbps,



A Complete Guide to 1x9 Optical Transceiver Module

1x9 optical module applications include industrial automation, telecom backhaul, and legacy network upgrades for reliable, cost-effective data links.



Cisco Optical Transceiver Handling Guide

The QSFP-DD, QSFP, and SFP transceiver modules are hot-swappable and connect the electrical circuitry of the system with an optical external network. The following figure shows the QSFP-DD





StarTech Brocade XBR-000182 Compatible SFP+ Transceiver Module

StarTech Brocade XBR-000182 Compatible SFP+ Transceiver Module - 10GBase-LR - For Optical Network, Data Networking - 1 x LC 10GBase-LR Network - Optical Fiber - Single-mode - 10 Gigabit



Cisco C9200-NM-4X 4-Port 10G SFP+ Network Module

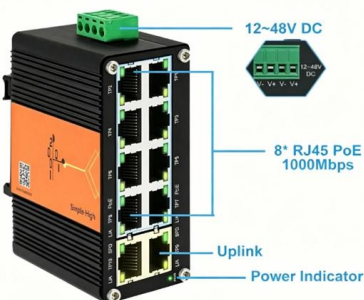
High-performance 4-port 10G SFP+ module for Cisco Catalyst 9200 switches. Hot-swappable, dual-rate support, and CE certified for enterprise networks.

Arista NIM-1QC , AWE-7200R 100G QSFP28 Module, OCP 3.0, Hot-Swappable

The Arista NIM-1QC is a Short Form Factor Network Interface Module that adds a single 100GbE QSFP28 port to Arista AWE-7200R Series Enterprise WAN Routers. OCP 3.0 compliant and hot



10 Ports PoE Switch 12~48V DC
Booster Function



Everything You Should Know About Hot Pluggable

Optical transceivers contain hot-swappable circuitry that protects the module's internal components from damage. When an optical module is

Optical Transceiver vs. Fiber Optic Module: What's the Difference



IntroductionEngineers, purchasing managers and installers often see the terms ??????????, optical module and fiber optic module used interchangeably -- and that causes confusion. This article



Common Questions About SFP Modules

Yes, SFP modules are hot-swappable. You can insert or remove them without powering down your devices, facilitating easy maintenance and upgrades.

Co-Packaged Optics -- a deep dive , APNIC Blog

These modules can be plugged into the front panel Lucent Connector (LC) ports that accept hot-swappable laser cartridges. Fibre patch cords deliver



Transceivers Explained: SFP vs SFP+ vs SFP28 vs QSFP+ vs QSFP28

Optical transceivers are the backbone of modern networking. These compact, hot-swappable modules plug into switches, routers, and servers to enable high-speed data transmission



Differences Between Optical Modules SFP, SFP+, CFP, XFP, QSFP

SFP, Small Form-factor Pluggable, is a small, hot-swappable optical module. SFP is half the size of a GBIC module and can be configured with more than twice the number of ports in the

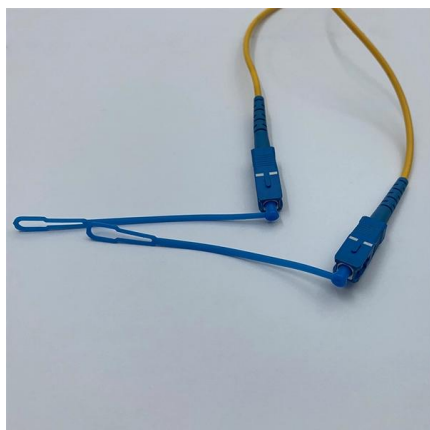


The Rise of Co-Packaged Optics: A Deep Dive into CPO

This co-packaging dramatically shortens the high-speed electrical lanes connecting the silicon to the optics. Key Distinction: The CPO optical transceiver

Arista Optics Modules and Cables

Hot swappable to maximize uptime and simplify serviceability Data rates from 1GbE to 25GbE supported using the SFP form factor, for the smallest, and lowest power solutions SFP+ Optical interoperability



Optical Transceivers / SFP Modules - High-Performance Compatible

A: Yes, all SFP and QSFP module from LINK-PP are hot-swappable, allowing fast installation and replacement without network downtime. Q: Are there customization options for LINK-PP optical

Are SFP Modules Hot-Swappable? Safe SFP



Hot Swapping Guide

Most SFP optical modules are designed to be hot-swappable according to the SFP Multi-Source Agreement (MSA). This means they can generally be inserted or removed while the switch or



Hirschmann MM3-4FXM2 Industrial Media Module for MICE Switches

This hot-swappable module adds four Fast Ethernet fiber optic ports to a compatible MICE switch chassis, enabling flexible network expansion and long-distance connectivity in demanding industrial

Understanding the Hot-Pluggable Feature of Optical

A hot-pluggable optical module refers to a transceiver that can be safely inserted into or removed from a powered host system--such as a switch,



The Difference Between SFP, SFP+, SFP28, QSFP

Optical module types such as SFP, SFP+, SFP28, QSFP+ and QSFP28 are not unfamiliar to professionals. These hot-swappable modules can



Luocute Industrial Ethernet Switch, 1 Gigabit SFP Optical Port

Buy Luocute Industrial Ethernet Switch, 1 Gigabit SFP Optical Port 4 10/100M RJ45 Ports, Gigabit Ethernet Media Converter, Hot Swappable SFP Module for Fiber Transmission Up to 120km online



Things to Know About "Hot-swappable" Optical

Hot-swappable optical transceiver module, is an optica component with a function that can support inserting or pulling out the module without

100G Optical Modules: Analysis of QSFP28 Packaging Technology

In 100G optical communication networks, QSFP28 (Quad Small Form-Factor Pluggable 28) is the mainstream packaging standard. It is key to high-speed interconnection in data centers



Adtran showcases 800G LiteWave optics at OFC 2026 , ADTN Stock

A pluggable transceiver is a small, hot-swappable module that converts electrical signals from networking equipment into optical or wireless signals for transmission, and vice versa. Think of



Cisco QSFP-100G-SR4-S Module : 100Gbps Multimode, Low Power, Hot

1310nm Storage Temperature Varies (depending on specific module) Operating Humidity 10 to 95% Hot Swappable Yes Forwarding Bandwidth 176Gbps Ports 48 x 10/100/1000 (PoE+) Brand Name Cisco



Contact Us

For datasheets, pricing, or custom high-speed optical interconnect solutions, please visit:
<https://www.syropy.com.pl>