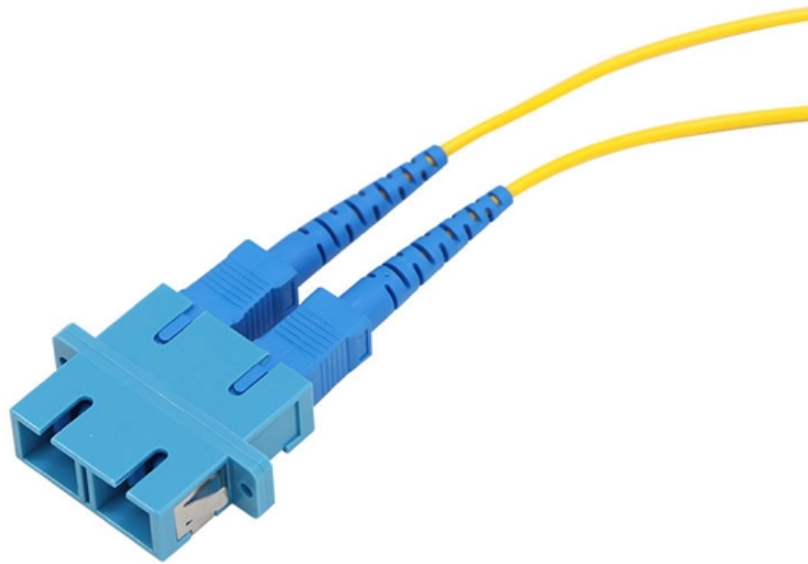


# **The network egress point is an aggregation switch**





## Overview

---

An aggregation switch is a network device that consolidates traffic from multiple access switches, wireless access points, or other edge devices and forwards it to core switches or routers. By bundling multiple network connections into a single high-bandwidth link, aggregation switches help. Test access points (TAP) aggregation is an alternative solution to help with monitoring and troubleshooting tasks in the data center. LACP (Link Aggregation Control Protocol): LACP is an industry-standard protocol (802. This article looks at what each such tool does, compares how they differ from each other, and offers suggestions as to what sort of network each.



## The network egress point is an aggregation switch

---

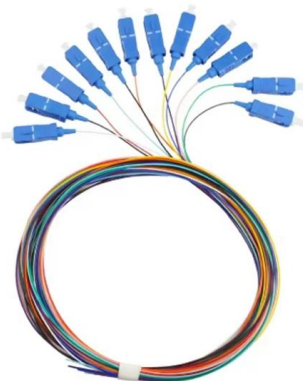


### Switch Engine v33.2.1 User Guide

After EAPS and L2 connectivity is configured, additional L3 routing configuration can be added. Using redundant aggregation switches helps protect against a single point of failure at the switch level,

### What is an Aggregate Switch?

What is an Aggregate Switch? Understanding Centralized Network Management An aggregate switch is a high-capacity network switch that consolidates connections from multiple



### In-depth analysis: What is an aggregation switch?

In many network constructions, we have all heard of switches. So do you really understand switches? Why are aggregation switches often overlooked?

### Port Aggregation FAQs

Port aggregation can increase maximum throughput, and allow for network redundancy. It does this by splitting traffic across multiple ports instead of forcing



### **Understanding Switch Aggregation: A Comprehensive**

Linksys: Understanding Link Aggregation on a Linksys Switch: This support article from Linksys provides an understanding of link aggregation on

### **What is an Egress Port in Networking?**

An egress port refers to the physical or logical interface on a network device through which network traffic exits and is forwarded toward its destination. Whether it is on a switch, router, or



### **Core, Aggregation, or Access Switches? Choose the**

Function: Connection point for all devices on a segment of segment of a network that breaks down and absorbs the data flow between all of the



## Aggregation Network

In-network aggregation (INA) technology is a new approach to accelerate aggregation tasks and reduce traffic by offloading aggregation function on network switches.

LoRawan outdoor base station



## Cisco Nexus 9000 Series NX-OS System Management Configuration

TAP aggregation switches link all of the monitoring devices to specific points in the network fabric that handle the packets that need to be observed. In the TAP aggregation switch

## What is an Aggregation Switch?

It is a networking tool called an aggregation switch that enables the consolidation of several network connections into a single link. This makes it possible to boost bandwidth and



## What is an Aggregation Switch?

The aggregation switch is located in the middle of the network architecture, which is equivalent to a middle-level manager of a company. It



## What is an Aggregate Switch?

An aggregate switch is a high-capacity network switch that consolidates connections from multiple access switches, acting as a central point for managing network traffic and providing



## Aggregation Switch

An Aggregation or "Top-of-Rack" switch is designed to connect everything in a rack at high speeds, then have an even bigger pipe out to the rest of the network.



## Everything You Need to Know About Aggregation Switch

The primary function of an aggregation switch is to aggregate and forward data from multiple network devices, such as access switches, wireless



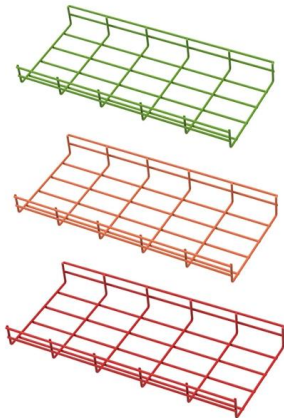
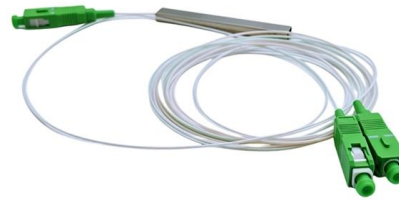
## Data Center Design: Basic 3 Layers, Core, Aggregation,

Data Center Basic Layered Design of Core, Aggregation, and Access The data center network design is based on a proven layered approach, which



## Egress QoS and Ingress QoS

Egress QoS and Ingress QoS, or Quality of Service, is a computer networking term that refers to any technique that establishes and executes a prioritization



## Ingress vs Egress: What is it

In networking, ingress and egress refer to the flow of data into and out of a network device or interface. Ingress refers to the flow of data into a network device or interface, such as a

## What Is an Aggregation Switch and How to Choose?

On the other hand, aggregation switches act as a unified exit point for access nodes, optimizing network performance and simplifying management by



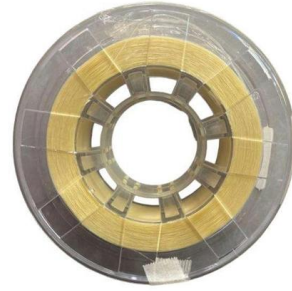
## Cisco Nexus 9000 Series NX-OS System Management Configuration

Test access points (TAP) aggregation is an alternative solution to help with monitoring and troubleshooting tasks in the data center. It works by designating a device to allow the



## What is an Aggregation Switch?

Unlike the core switch, the aggregation switch can choose either the layer 2 switch or the layer 3 switch. When the layer 2 switches are selected, the

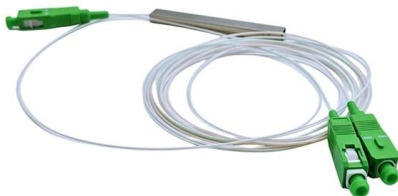
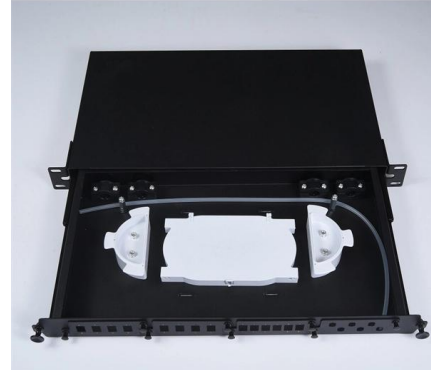


## Aggregation Switch

An aggregation switch refers to a type of switch used to connect multiple ToR switches to a core switch/router in a cloud data center network. It enables high-bandwidth aggregation ports to be

## Everything You Need to Know About Aggregation Switch

Aggregation switches are typically deployed in enterprise networks, central network connectivity, and data transfer points. They are designed to



## What is Switch Aggregation, Its Role and Selection Advice

What is switch aggregation? Switch aggregation refers to the concept of consolidating multiple access layer switches into a single aggregation layer switch in a traditional three-tier network



## Visualizing Traffic Exit Points in Complex Networks

In either case, UE is insanely valuable across both enterprise and service provider networks, for diagnosing routing issues, understanding which traffic sources are



### What is an Aggregation Switch?

Additionally, the access switch includes user management features like address authentication, user authentication, and user information collection in addition to offering sufficient

## Contact Us

---

For datasheets, pricing, or custom high-speed optical interconnect solutions, please visit:  
<https://www.syropy.com.pl>