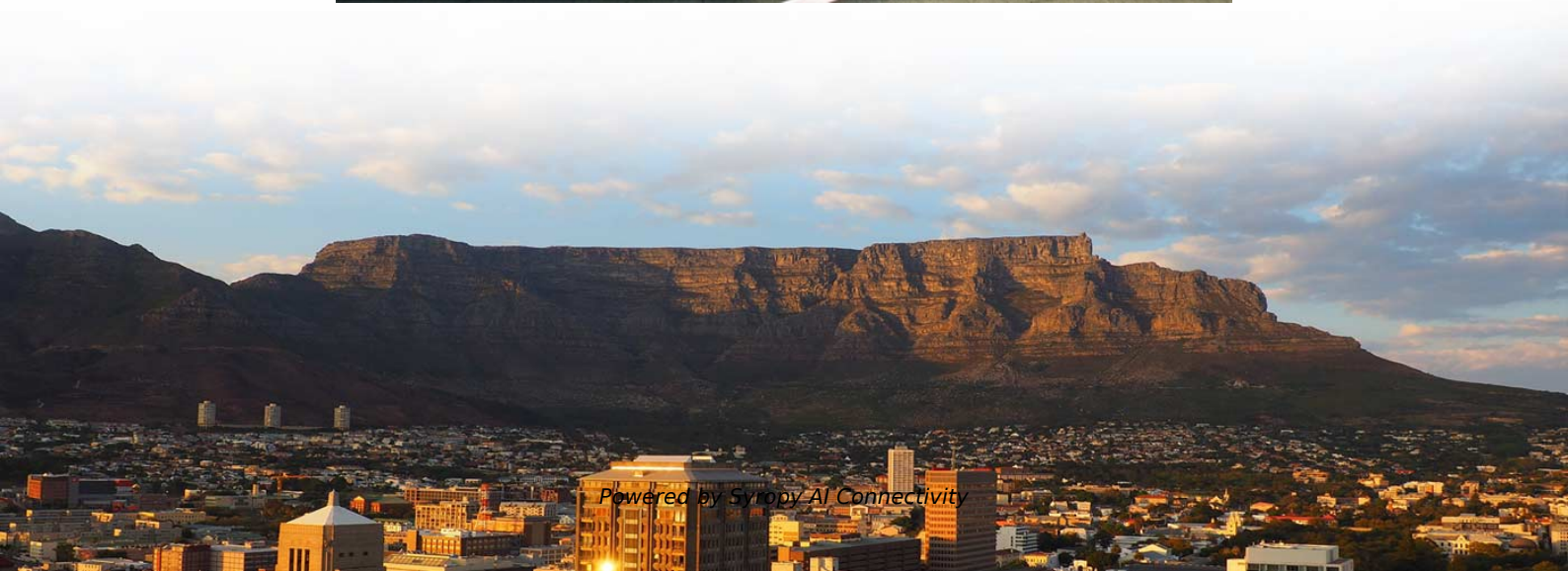
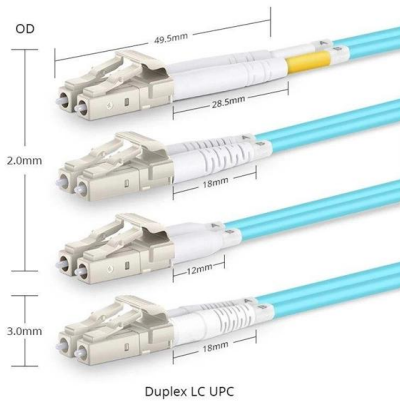


The main power line in the distribution box is missing





The main power line in the distribution box is missing

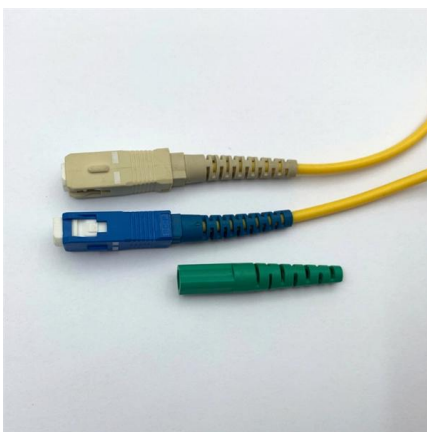


Why Does My Electrical Panel Not Have a Main Breaker?

A better approach typically involves installing an external main disconnect ahead of your existing panel or, more commonly, replacing the entire panel with a modern

A Guide to Wiring a Main Breaker Box

When it comes to the electrical system in your home, the main breaker box is the heart of the system. It distributes power from the main electrical supply to.



Distribution Boxes: Types and Functions

A distribution boxes acts as the load center and main distributor of electrical power within a building. Also called a distribution board, panel board,

A Step-by-Step Guide to Wiring an Electrical Panel Box

The main purpose of an electrical panel box is to safely control and distribute electricity throughout the building. It acts as a central control point where the



How To Read The Distribution Box System Diagram

?Analyze the incoming line part?: Determine the incoming line source of the distribution box and the configuration of the incoming line circuit breaker, and

Distribution Box Installation: A Complete Guide to Safe

The distribution box, often referred to as a breaker box, fuse box, or electrical panel, is a critical component of any electrical system. It acts as the central hub for



unsupervised_topic_modeling/topics/en/17/100/100/topics at

Contribute to annontopicmodel/unsupervised_topic_modeling development by creating an account on GitHub.





My electrical panel has no main breaker---is that a

There is another type of panel that looks, at first glance, like it might be missing a main breaker. This type of panel is configured such that it takes a



Power Distribution Line Repair: Essential Maintenance

Here are some important maintenance guidelines to maximize the reliability of power distribution lines. Acquire knowledge of effective repair

What's in a Main Service Panel (Breaker Box)? , A

Safety first! This guide provides an engaging, step-by-step overview of your residential wiring system and main service panel (breaker box). It includes



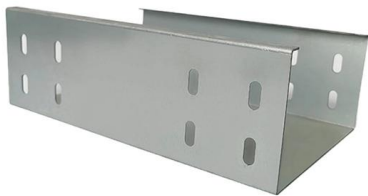
How to Wire a Single Phase Breaker Box: Step-by-Step

A typical wiring diagram for a single-phase breaker box would include the diagram of the breaker box itself, showing the various circuit breakers and their ratings. It



Residential Electric Meter Box Wiring Diagram Guide

Understanding Residential Meter Box Wiring The setup that manages the main power intake for a building plays a crucial role in ensuring the safe distribution of



How Does a Power Distribution Box Work

Learn how a power distribution box works step by step--from incoming power to circuit protection and smart monitoring--for safe, efficient electricity delivery.

What Happens if the Neutral is Lost in the Main or

If you suspect a broken neutral, it's essential to turn off the power at the main panel and contact a licensed electrician immediately. A broken neutral is a serious



Beginner's Guide to Electrical Panel Troubleshooting

After replacing the fuse, turn the main power switch back on and check if the circuit is now operational. If the new fuse blows immediately after replacement, there might be a more serious



How to Wire a Home Distribution Box

Main Distribution Board or Fuse Boards (Consumer Unit) usually contains on the following three main units to control and distribute electric supply



Power Distribution Boxes Explained Simply

How Does a Power Distribution Box Work? A power distribution box acts like a traffic controller for electricity. It receives power from the main supply

Distribution Boxes Explained: Types, Functions, and

Learn about distribution boxes, their types, functions, and safety features to ensure efficient and secure electrical power distribution in any building.



HCP36868M

Schneider Electric USA. HCP36868M - Interior, I-Line Panelboard, HCP, 800A, w/main breaker, 72in CB space, for 42in W x 86in H x 9.5in D box, Cu bus.



Power Distribution Box

Use a volt meter to measure voltage at the power supply and at the power distribution box. Be sure that the power distribution box has sufficient power provided to it. Long cable runs can result in a voltage



Distribution Box Wiring Steps

Wiring and Binding? Wiring Direction?: Wiring between the main circuit breaker and each branch circuit breaker in the box generally goes on the left, and

A Step-by-Step Guide to Wiring an Electrical Panel Box

Find out how to properly wire an electrical panel box with a comprehensive diagram and step-by-step instructions.



Understanding Powerline Diagrams: An Essential Guide

A powerline diagram is a visual representation of the electrical power distribution system in a building or facility. It shows the connections, components, and flow of



Single Phase Distribution Box Definition and Main Parts

A single phase distribution box controls and protects home or office circuits. Learn its definition, main parts, and how it ensures electrical safety.

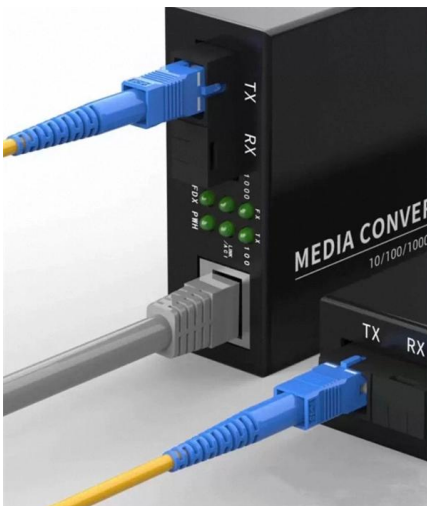


Cannot select Distribution System from drop-down list or

The Connector used in the Electrical Equipment (Distribution Panel) family is missing or does not have the appropriate Voltage or Number of Poles set

Power Distribution Boards: Understanding their role

What is a Power Distribution Board? Power distribution boards, also known as a panelboard or fuse box, is a crucial component in both commercial



How to Read and Interpret Your Distribution Box Labels

If you see missing labels and can't figure out which breaker does what, call a licensed electrician. You should also get help if you add new circuits or change wiring.



What Is a Distribution Box?

Some distribution boxes have a longer cord than others. When choosing a distribution box, make sure the cord is long enough to reach the main



Contact Us

For datasheets, pricing, or custom high-speed optical interconnect solutions, please visit:
<https://www.syropy.com.pl>