

The live wire of the power distribution box is burnt out





Overview

Check the electrical load and ensure that the sensors do not exceed the 10 Amp maximum. However, a burned-out neutral line is a common issue that can disrupt operations, cause safety hazards, and damage electrical equipment. Understanding the causes and implementing preventive measures is essential for ensuring the reliability and safety of electrical systems. Maintenance is primarily performed every year, once before monsoon & again after monsoon, to determine whether any breakdowns have happened in the line. The reason this happened is because the 'Power distribution box' has 2 plates connecting right at this exact point! If you as much as loosen the nut on this bolt, the connection between the 2 plates widens, leaving a gap.



The live wire of the power distribution box is burnt out

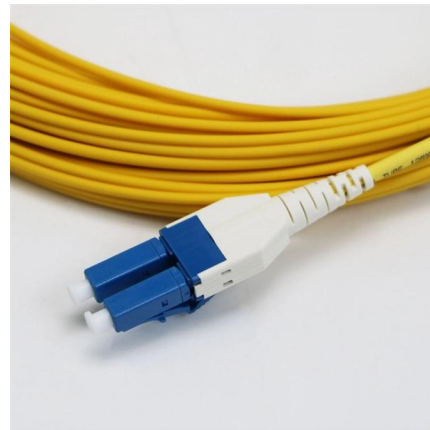


How to Repair Burned Electrical Wire? , a2z Marmat

Learn how to repair burned electrical wires safely and effectively in our

How to Fix Burnt Electrical Wires Safely

Prioritize safety when fixing burnt wires. Learn immediate protocols, diagnose the root cause, and perform lasting, code-compliant repairs.



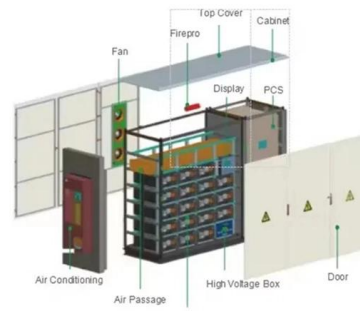
Main Breaker Switch Burnt Out. Why? How? What to do?

A MAIN SWITCH BURNT OUT will normally mean that you have a complete and total power loss to your home. The main switch or linked main switch as it is also



Eventbrite

Find tickets to your next unforgettable experience. Browse concerts, workshops, yoga classes, charity events, food and music festivals, and more things to do.

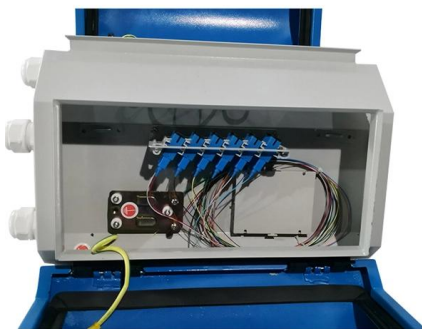
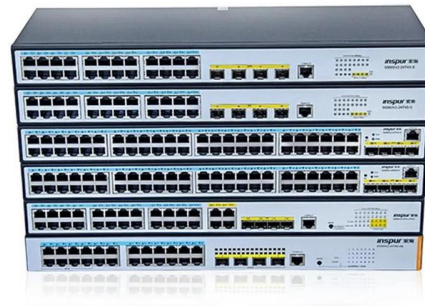


High-Capacity HDDs for PCs, NAS, Gaming, Data

Western Digital, leaders in digital storage solutions compatible with Mac and PC. FREE shipping, friendly support, and 30-day return policy on storage products.

AshwinD24's gists · GitHub

GitHub Gist: star and fork AshwinD24's gists by creating an account on GitHub.



Understanding Circuit Breaker Wiring Configurations in

Circuit Breaker Wiring Methods Live (L) Wire Connection: In a distribution box setup, the incoming live wire (also known as phase or hot wire,



What Happens When a Fuse Blows and How to Fix It

These overloads can occur due to loose wires, faulty outlets, or the use of too many devices on the same circuit. Unlike circuit breakers, when fuses are



Why Neutral Lines Get Burned Out and How to Prevent It

However, a burned-out neutral line is a common issue that can disrupt operations, cause safety hazards, and damage electrical equipment. Understanding the

QRZ Forums

Ham Radio discussion groups QRZ Forums Code of Conduct Guidelines and Rules for users of the Forum - Updated July 19, 2023



Ars Technica

News and reviews, covering IT, AI, science, space, health, gaming, cybersecurity, tech policy, computers, mobile devices, and operating systems.





Electronic Components Distributor

Electronic components distributor with a huge selection in stock and ready to ship with no minimum orders. New electronic parts added daily.



Hotels, Accommodation & Cheap Hotel Deals , Book at Expedia site

Expedia's Hotel Search makes booking easy. Choose from thousands of hotel discounts & cheap hotel rooms. Pick the perfect hotel deal & save!

unsupervised_topic_modeling/topics/en/17/100/100/topics at

Contribute to annontopicmodel/unsupervised_topic_modeling development by creating an account on GitHub.



Power Distribution , Troubleshooting

Be sure that the power distribution box has sufficient power provided to it. Long cable runs can result in a voltage drop, which can be solved by using a heavy gauge wire. Check wires/DIN terminal clasps



Re: Burnt wires in power distribution panel

While tracing the cause of an intermittent electrical failure in an electrical circuit in our ORV 21RBS, I discovered that all of the neutral wires in the power distribution panel were 'burnt' where they



cs-178-project/imdb.vocab at main · apmalani/cs-178-project

Contribute to apmalani/cs-178-project development by creating an account on GitHub.

zxcvbn-rs/src/frequency_lists.rs at master

Port of Dropbox's zxcvbn password strength library for Rust - shsoichiro/zxcvbn-rs



Burned power distribution box

Plan on checking the wiring from battery to the b terminal to starter/alternator. I did have aftermarket trailer light module and inverter, but both had been disconnected prior to this. Just



Burnt Electrical Box , Electrical Faults Fixed

Table of Contents What is an electrical box?
What does a consumer unit do? What causes the consumer unit/electrical box to become burnt?



How to Fix Burnt Electrical Wires , 10 Easy Steps (2026)

Now that you know how to fix burnt electrical wires, take the time to go through your home and make sure all of the wiring is checked correctly and

Common troubleshooting of distribution boxes: analysis of causes of

Distribution boxes are the unsung heroes of our electrical systems, quietly managing power until something goes wrong. When they start tripping, overheating, or making strange noises, it's more



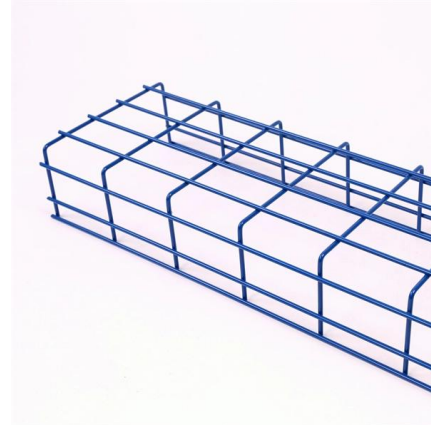
How to Tell if a Fuse is Blown in a Distribution Box

Learn how to identify a blown fuse in your distribution box. Find signs, test methods, and replacement tips for safe and effective troubleshooting. Knowing how to identify a blown fuse in your



What are the common problems of distribution boxes?

However, the internal layout of some distribution boxes is chaotic, and the wires are messy, which not only affects the appearance, but also may

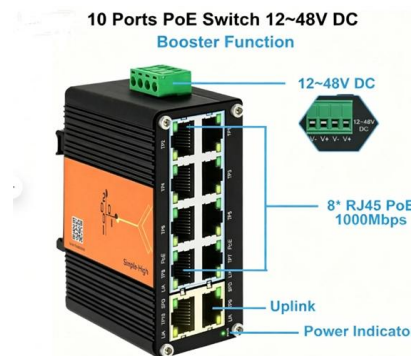


[directory-list-2.4.txt/directory-list-2.4.txt at main](#)

Customer stories Events & webinars Ebooks & reports Business insights GitHub Skills

The Atlantic

The Atlantic covers news, politics, culture, technology, health, and more, through its articles, podcasts, videos, and flagship magazine.



Power Distribution Line Repair: Essential Maintenance Techniques

Here are some important maintenance guidelines to maximize the reliability of power distribution lines. Acquire knowledge of effective repair techniques, establish regular inspection



Contact Us

For datasheets, pricing, or custom high-speed optical interconnect solutions,
please visit:

<https://www.syropy.com.pl>