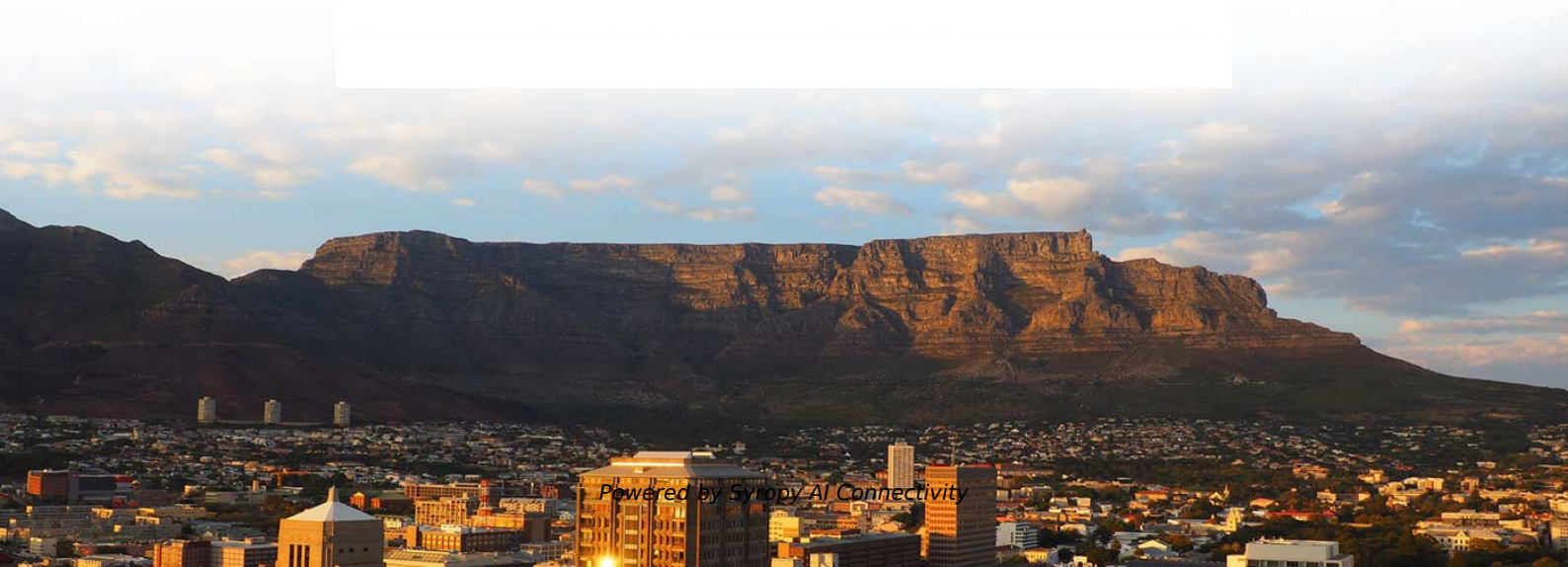
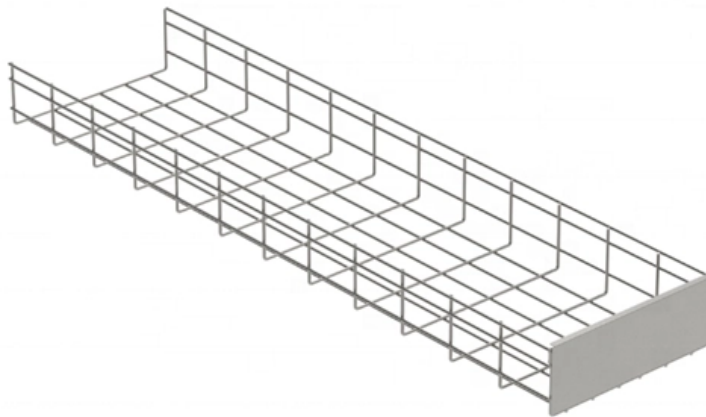


The function of neutral and ground wires in distribution boxes





Overview

White: The neutral wire, responsible for sending unused electricity back into the breaker panel. Before diving into the details, we must understand the roles of neutral and ground wires in a power and distribution system. It is a grounded conductor that helps to balance the electrical load and ensures the safe and efficient distribution of electricity throughout the building. The distinction between 1P and 2P circuit breakers plays a pivotal role in determining the appropriate protection level for various circuits.



The function of neutral and ground wires in distribution boxes

Ground Vs Neutral , Learn the Differences between



Ground and Neutral are two important conductors apart from the hot (or phase or live) wire in a typical mains AC Supply. Neutral wire acts as a return

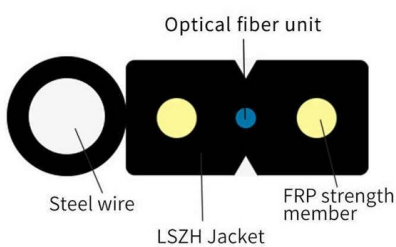
Neutral Vs Ground Wire: What That White Wire Is

I'm hopeful that this guide, courtesy of research, will help to clarify it. The neutral wire serves as a return path for electrical current while the ground wire provides a path



The installation requirements for the distribution box

A distribution box is the heart of any electrical system. It takes the incoming power and safely distributes it to different circuits throughout your



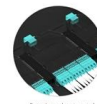
Why are Neutral and Ground Wires Bonded in a Subpanel?

According to NEC Article 250, both the neutral and ground wires must be connected only in the main panel or at the first service disconnect. They should never be



Pre-Terminated Patch Panel

- Standard 19" width
- Max 144 fibers in 1U
- Ultra-High Density Ready



Ground and neutral

A neutral conductor, in combination with one or more phase line conductors, normally completes a circuit between the source and load. In a polyphase

Should a Breaker Box Wire Neutral or Ground?

This dedicated four-wire feed includes two ungrounded (hot) conductors, one insulated neutral, and one insulated or bare equipment ground. This method ensures that the neutral current



Grounding System Installation Standards for Distribution Boxes and

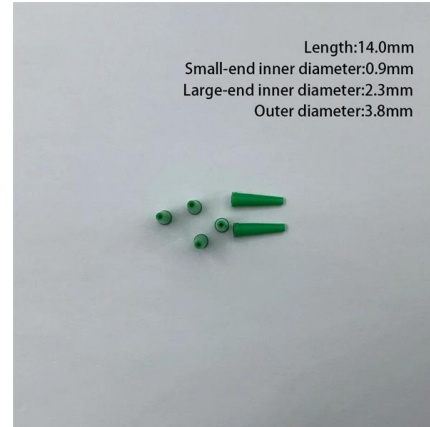
Hey there! If you're working with electrical systems, you know that grounding isn't just some bureaucratic requirement--it's literally the difference between a safe, functional system and a potential disaster.

The Importance of the Neutral Wire in a



Breaker Box

The neutral wire in a breaker box plays a crucial role in the safe distribution of electricity throughout a building. It is an essential component of the electrical system and is connected to the grounding

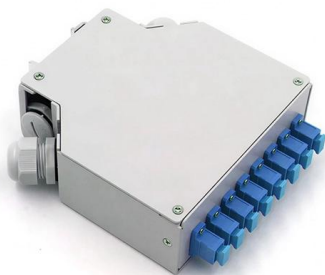


Understanding Neutral, Ground, Grounding, and Bonding

Neutral is the return path of the current, and ground wire holds the fault current to trip the breaker in protecting the person and the facility. The neutral and ground

Understanding the Live Earth and Neutral Wire in

An analysis of the key roles of the live earth and neutral wire helps readers understand their functions and differences in transformers.



Should a Breaker Box Wire Neutral or Ground?

The neutral wire remains at or near ground potential throughout its run, providing a stable reference point for the system's voltage. In contrast, the equipment grounding conductor (EGC) is a



Electrical System Neutral and Ground

This means that Neutral can be grounded, but Ground is not neutral. In a 3 phase low voltage distribution system, the preferred installation consists of five wires i.e. 3 phase conductors, a neutral

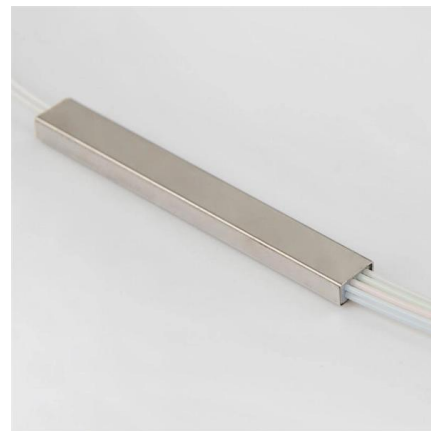


JLC Field Guide: Grounding

JLC Field Guide: Grounding The purpose of grounding is safety: A ground wire generates a short circuit and trips the circuit breaker or fuse when

Neutral Vs Ground Wire: What That White Wire Is

Hopefully this article has explained some of the similarities and differences between the neutral and ground wire, while also explaining the importance of the ground



Reuters , Breaking International News & Views

Find latest news from every corner of the globe at Reuters , your online source for breaking international news coverage.



Can Neutral And Ground Wires Be On The Same Bus Bar?

Many homeowners get confused about their electrical system when talking about neutrals and grounds. This confusion can lead to questions about



Distribution of the MV neutral conductor right to the loads

MV distributed neutral conductor 4-wire systems are characterized by distribution of the MV neutral conductor right to the loads. This type of distribution



Electric Basics: What is a Live Wire, What is a Neutral Wire

The difference between the neutral wire and the ground wire may seem confusing. However, the primary difference is that the neutral wire carries



A guide to understanding home breaker box wiring

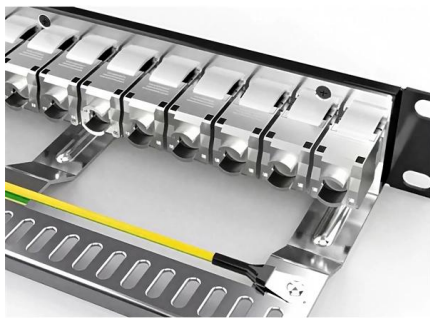
The neutral bar and the ground bar are two separate bars located in the breaker box. The neutral bar is typically connected to the neutral wire coming from the utility





Understanding Your Breaker Box: How L1, L2, and Neutral Work

Learn how L1 and L2 from your electrical service power your breaker box, the role of Neutral and Ground, and why balancing electrical loads between L1 and L2 is essential.



When and Why to separate Grounds and Neutrals -

Potential Hazards of Improper Ground-Neutral Connections Improper connections between ground and neutral wires can lead to dangerous conditions.

Why are Neutral and Ground Wires Bonded in a Subpanel?

Why Do Neutral and Ground Conductors Need to Be Bonded in the Main Panel? According to NEC Article 250, both the neutral and ground wires must be



What Is A Neutral Wire And Why Is It Important?

Although the neutral wire is able to channel the current to some form of ground, you won't always find a ground wire as well. Older installations won't



Breaker Box Wiring: Which Wires Are Neutral and

Your breaker box wiring includes three main wire types: black hot



Service Panels

The neutral/ground buses are long aluminum bars containing many terminal screws, to which ground and neutral wires are attached. The service panel houses

Ground Neutral and Hot wires explained

Ground neutral and hot wires explained. In this video we look at the difference and purpose of the ground wire, the hot wire and the neutral wire in a north american residential electrical system.



How Electricity Gets from the Meter to Your Breaker Box (Keeping the

Learn how electricity travels from your home's meter to the breaker box. Discover the role of L1 and L2 buses, the Neutral bus, Ground bus, and ground bonding in your home's electrical system in this



Understanding Circuit Breaker Wiring Configurations in

Correct wiring methods for circuit breakers within distribution boxes are fundamental to ensuring electrical safety and compliance with established codes.



Contact Us

For datasheets, pricing, or custom high-speed optical interconnect solutions, please visit:
<https://www.syropy.com.pl>