

The function of adjustable supports for tunnel cable trays





Overview

Efficient cable management in tunnel construction facilitates the installation, maintenance and expansion of your cable trays. Early planning of the cable support structure and the selection of suitable products reduce planning errors and subsequent adjustments. These solutions provide optimum safety, flexibility and excellent corrosion resistance for ety lighting, signs, ventilation, etc. The WKV 35 angle connector is designed for 90° bends and can be adjusted to 45° on-site. A rung spacing of 6 to 9 inches (150 to 230 mm) is preferable when the cable tray cont d for instrumentation and control applications that require.



The function of adjustable supports for tunnel cable trays

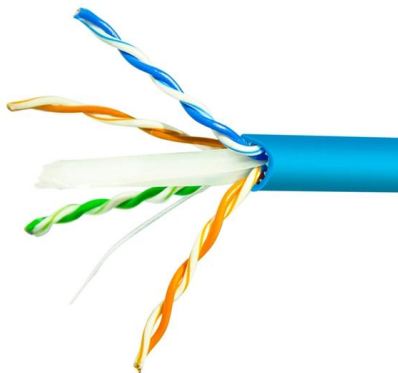
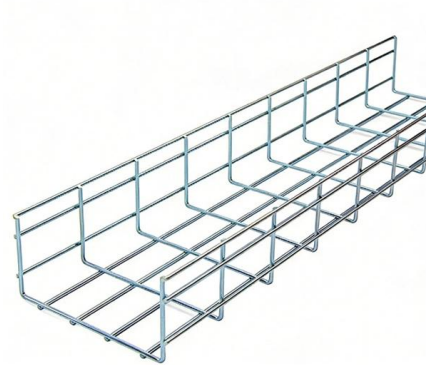


What are Cable Trays & Different Types of Cable Trays

Learn what cable trays are & explore the various types, benefits, and purposes. Gain insights into how electrical cable trays can revolutionize your

Cable Tray Technical Guide A practical guide to product selection and

In designing supports for a cable tray system, consideration should be given to the loads associated with future cable additions and any additional loading that may be applied to the cable tray system (e.g.,



[zxcvbn-rs/src/frequency_lists.rs](#) at master

Port of Dropbox's zxcvbn password strength library for Rust - shsssoichiro/zxcvbn-rs

Cable management in tunnels - Cable management systems for tunnel

Efficient cable management in tunnel construction: cable trays, cable ladders, mesh cable trays, and support systems from PohlCon for safe, durable tunnel installations.



c tray solutions able For tunnels guide

The Legrand cable tray ranges not only perform their initial function, to support conductors, but their specific accessories enable them to take additional equipment: luminaires, signs, emergency lighting,



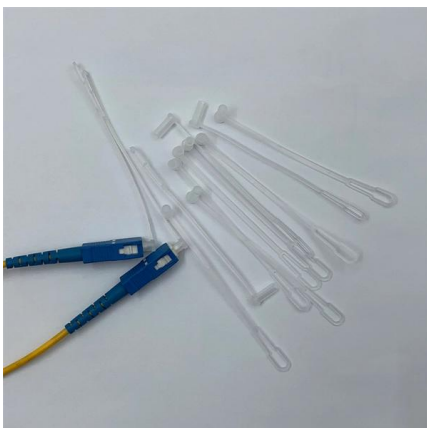
such/ignore.txt at main · yeerma/such · GitHub

aasdadasda. Contribute to yeerma/such development by creating an account on GitHub.



Cable Support Systems

EzyStrut's cable supports are designed to provide easy to install cable management for multiple types of sites and to work around the needs of the project manager.





CMU School of Computer Science

å 10 ä ,EURå fä , ? 10 ä ,EURç(TM)¾ 100
ä ,EURç(TM)¾å¸s 100 ä ,EURå f 1000 ä ,EURå
få¸s 1000 ä ,EURâ--<ä ,EUR 101
ä ,EURç(TM)¾é>¶ä



Cable Hangers , J Type Cable Hanging LV MV HV

Cable Hanging Systems Galvanised Steel & Non-Metallic (Nylon) Cable Supports Ellis Patents Galvanised Steel Cable Hanging Systems are cable hangers

Tunnel and Rail System Solutions , EAE Electric

These systems, which stand out with their high transmission capacity, low loss rates and maintenance-free structure, meet the energy needs of in-tunnel lighting,



Guide to cable support systems

Widths of 8 and 15 millimetres enable flexible adjustment to different cable trays, cable ladders and cable volumes. With the help of the matching SBV tightening strap locks and 576 spring chuck, the





Cable Management Support Systems

Cable Management Support Systems Cable Support Systems are well designed to provide necessary support for cable trays, cable ladders and trunkings. Cable

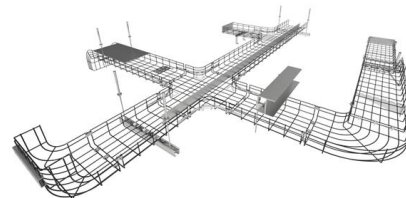


CABLE TRAY SUPPORT SYSTEM

Strut channel is used to mount, support, and connect lightweight structural loads for supporting cable tray in Raised access floor system. These include Pipes, conduits, cable trays, electrical wires, data

cable tray solutions For tunnels guide

The Legrand cable tray ranges not only perform their initial function, to support conductors, but their specific accessories enable them to take additional equipment: luminaires, signs, emergency lighting,



Solved: Cable trays mounted in a tunnel are most likely to use_ Select

Cable trays mounted in a tunnel are most likely to use a method that allows for suspension and flexibility within the confined space. a. pipe rack mounting: This is typically used for larger, more complex





What Is A Cable Tray? 5 Types Of Cable Trays

A cable tray is a structural system used to support and manage electrical cables in various settings, such as industrial, commercial, and residential environments.



Types of Cable Trays - Purpose, Advantages,

Cable tray systems are alternatives to wire ways and electrical conduit, which completely enclose cables. Cable trays are capable of supporting all types of

The complete Kabelschlepp (2024/26)

Support trays An even surface is required for reliable unrolling of the unsupported cable carrier. If this is not already provided on site, a support tray has to be used. If required, we supply our cable carriers



Decoding Cable Tray Support Structures: Tips and Insights

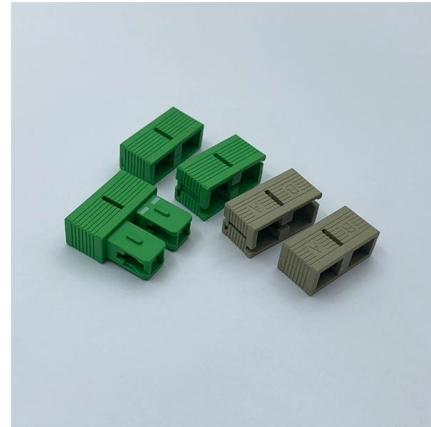
Cable tray support structures are a very important part of cable management. Knowing the types of cable tray supports and their applications is





Safety Guidelines for Cable Installation

The document provides a job hazard analysis for erecting cabling, cable trays, and cable supports inside tunnels. It outlines 4 key steps: 1) marking installation



Cable management in tunnels - Cable management systems for

Our high-quality cable support systems for tunnels ensure that cables are safely routed, bundled and protected from mechanical stress. Our product solutions, such as cable trays and cable ladders,

Best practice guide to cable ladder and cable tray

Cable ladder and cable tray systems The following recommendations are intended to be a practical guide to ensure the safe and proper installation of



Product parameters



Cable support system

The vertical straight connector can be used to connect cable trays with the side height 60mm. Mitre joints that rise and fall up to an angle of 60° can also be realised with this connector.



Cable Trays for Tunnel Cable Management

Cable trays are installed by anchoring brackets or threaded rods to solid surfaces on the tunnel wall or the ceiling of the tunnel, with modular sections that can be adjusted to follow the path



Types of Cable Trays - Purpose, Advantages,

Cable tray is alternatives to wire ways and electrical conduits, which completely enclose cables. Study types of cable trays, purpose, advantages.

Best Practice Guide to Cable Ladder and Cable Tray Systems

Introduction This publication is intended as a practical guide for the proper and safe* installation of cable ladder systems, cable tray systems, channel support systems and associated supports.



Cable Tray - Structured Cable Routing and Support System

A cable tray is a component of engineering infrastructure designed for routing, organizing, and supporting cable lines in buildings, data centers, industrial facilities, and other environments with high





Electrical Cable Tray Transportation Use: Streamlining

Explore electrical cable tray transportation use, ensuring organized, safe, and efficient cable management in railways, tunnels, and transit systems.



Types of Cable Trays: Benefits and Uses

Different types of cable trays offer key benefits, optimizing cable management and enhancing efficiency in electrical systems.

Contact Us

For datasheets, pricing, or custom high-speed optical interconnect solutions, please visit:
<https://www.syropy.com.pl>