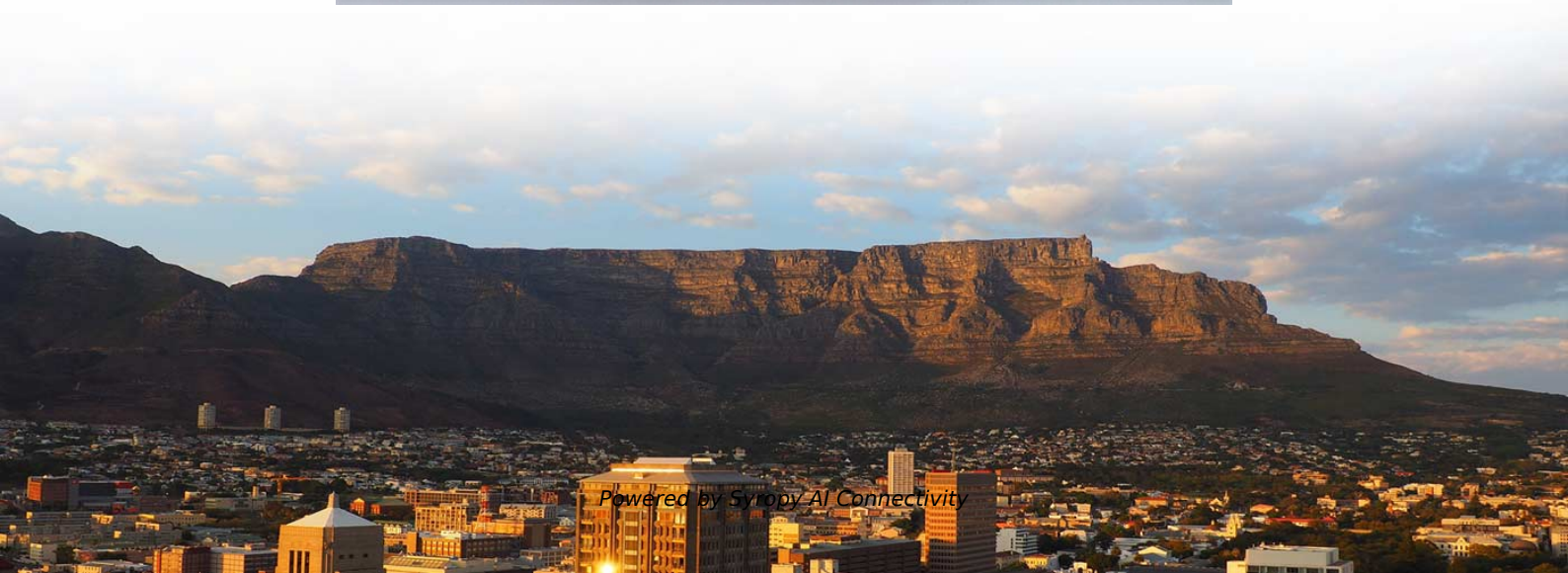


The distribution box must be connected to a grounding wire





The distribution box must be connected to a grounding wire



NEC 2023 Basics: Equipment Grounding Conductors

This section sets forth the situations under which you must connect an equipment grounding conductor to the exposed non-current-carrying metal parts

Grounding & Bonding -- Why it is done And How to Install Properly

This ground-fault path goes through boxes, conduits, wiring, pull boxes, and locknuts, etc. It only takes one poor connection such as a loose screw in a terminal bar or a loose wire nut or a loose locknut to



Correct Connection Method Of Grounding Wire Of

Open the distribution box and find the position marked with the grounding plate or PE letter. This position is the connection point of the grounding

Code Q& A: Attachment of Equipment Grounding

Q. What is the requirement for attaching the equipment grounding conductor to metal boxes?
A. If circuit conductors are spliced or terminated on



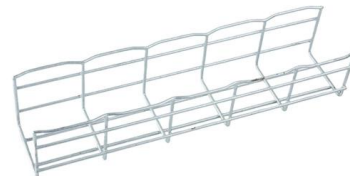
Nine Recommended Practices for Grounding

Bond all metal enclosures, raceways, boxes, and equipment grounding conductors into one electrically continuous system. Consider the installation of an



Grounding Requirements for Electrical Cables, Cable Trays, and

In cabling projects, common wiring methods include overhead lines, cables, steel pipes, cable trays, and busbars. I. Grounding of Power Cables
1. For systems with 110kV and above, where



Electric system ground system inspection

Electrical ground system inspection procedures & checklists. This document discusses procedures the inspection of the grounding system components of a building electrical system when performed by



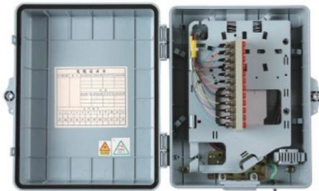
Unique EGC Situations: Connecting up to Code, part 13

Part VII of Article 250 specifies requirements for the EGC's continuity and connection to the equipment grounding terminal of grounding-type



DISTRIBUTION BOX

Each DISTRIBUTION BOX and controller must be grounded. On the US market, a 5.26 mm² (10 AWG) ground wire must be used, and in all other markets a 6 mm² must be used.



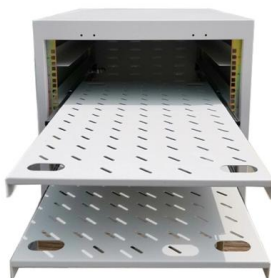
Grounding Do's and Don'ts: Essential Best Practices for

Keep grounding paths as short and direct as possible. Document your grounding network (bonding points, conductor sizes, materials) for easy troubleshooting and



Does the Distribution Box Door Need Grounding? Safety Standards FAQ

If you've ever found yourself scratching your head over whether that metal door on your distribution cabinet really needs a grounding wire, you're not alone. In factories, construction sites, and even





Electrical Panel Grounding , Safe & Code-Compliant

Ground bar in the panel: The terminal where all ground wires are connected. Bonding jumper: Connects the neutral and ground bars in the main



Electrical Box Ground Wire Connectors & Connections

This article describes options for connecting a metal electrical box to the grounding conductor & connecting the grounding conductor to a fixture such as a ceiling light or ceiling fan.

Grounding and UL 508A Standards

Additional rules for the grounding and bonding of industrial control panels include the sizing of ground conductors and the conditions that dictate



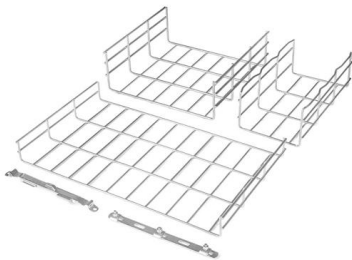
Where Does the Neutral Wire Go in a Breaker Box? -

Where Does the Neutral Wire in Breaker Box Go
The neutral or white wire is usually connected to the breaker box's neutral bus bar. At the same time,



The installation requirements for the distribution box

Learn how to install a distribution box safely and correctly. Covers wiring, placement, standards, and expert tips for a compliant setup.

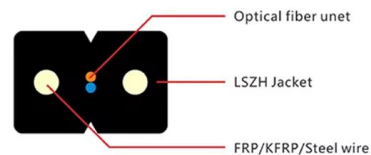


How to Install a Cable Distribution Box Safely and

Solution: Ensure that the distribution box is reliably grounded, and the grounding wire should have sufficient cross-sectional area and be connected to

Grounding and Bonding -- New Questions and Answers

It means that if an electrical system has a voltage to ground not more than 150 V (i.e., a typical 120/240 V, single-phase, 3-wire system, or a typical



9 Recommended Practices for Grounding

Use equipment grounding conductors sized equal to the phase conductors to decrease circuit impedance and improve the clearing time of



How to Properly Ground a Metal Electrical Box

Once the box's pigtail is secured, it is connected to the equipment grounding conductors entering the box. All incoming and outgoing ground wires, along with the box's pigtail, must be tightly



JLC Field Guide: Grounding

JLC Field Guide: Grounding The purpose of grounding is safety: A ground wire generates a short circuit and trips the circuit breaker or fuse when

The Basics of Grounding & Bonding Electrical Systems

Sec. 250.8 [Connection of Grounding and Bonding Equipment] identifies seven specific methods that must be used for connecting equipment and conductors for



Grounding and bonding Lesson 7-9 Flashcards , Quizlet

The branch circuits installed for wall-mounted ovens, counter-mounted cooking units, ranges, dryers, and associated outlet or junction boxes are required to be connected to an equipment grounding



NEC Basics: Connections and Continuity of Equipment

Connect the grounding terminal to an insulated equipment grounding conductor run with the circuit conductors. The equipment grounding conductor



Understanding Neutral, Ground, Grounding, and Bonding

Grounding and bonding are two different words often misused in the market. In simple terms, grounding connects to the earth, whereas bonding is the

Grounding & Bonding-Temporary Power Generation and Electrical Distribution

National Electrical Code of an effective ground fault current path is the backbone of electrical safety and shock prevention in temporary power generation and electrical distribution



The Complete Guide to Ground Rods in Electrical Systems

Connection to the grounding wire: The ground rod must be connected to the electrical grounding system of the building or structure using a grounding conductor. The grounding conductor



Contact Us

For datasheets, pricing, or custom high-speed optical interconnect solutions, please visit:

<https://www.syropy.com.pl>