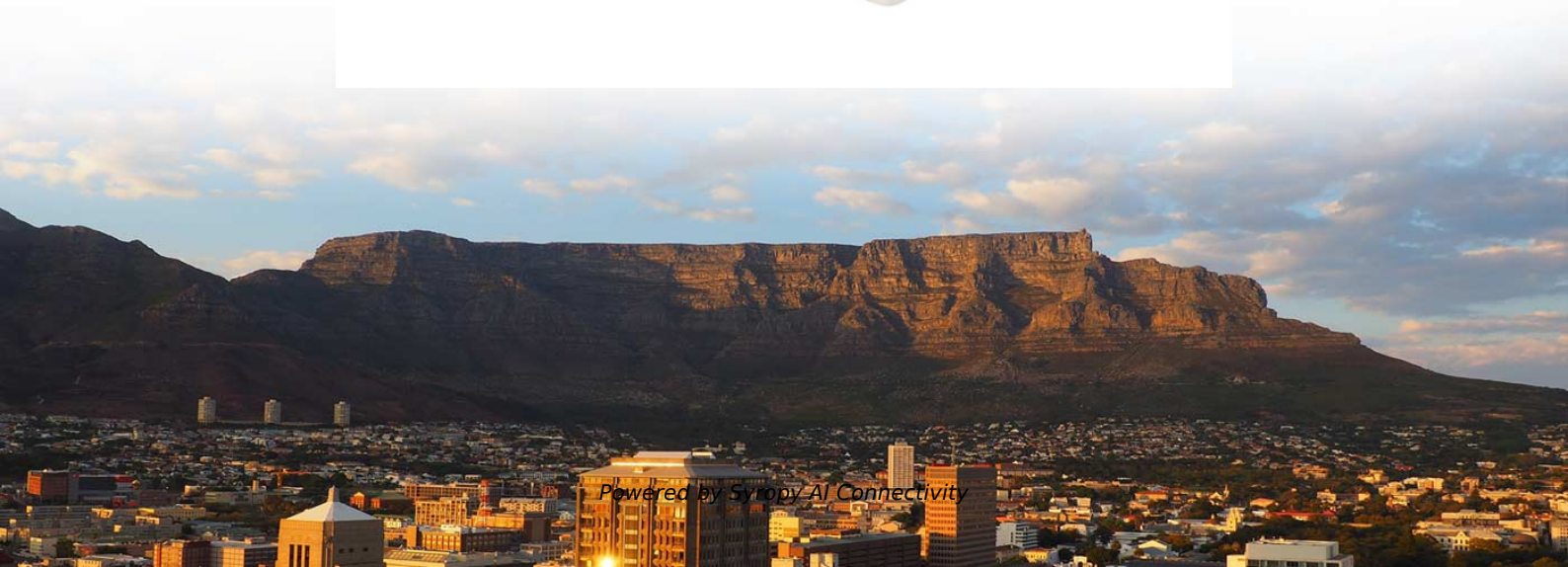


# The distance between the AC power distribution box in the computer room and the ground





## Overview

---

The working space must extend at least 36 inches deep, measured outward from the front of the panel. That 36-inch figure applies to equipment rated up to 150 volts to ground under the simplest installation conditions. Clearance: Electrical panels must be installed in a readily accessible area with a minimum clearance of 30 inches (762 mm) wide, 3 ft (36 inches or 914 mm) deep, and 6. Dedicated space: The space equal to the width and depth of electrical equipment in addition to the space extending from the floor to 6 feet above the equipment or structural ceiling. The International Standards of Practice for Inspecting Commercial Properties (ComSOP) states that the inspector. Electrical clearances are the minimum separation distances the National Electrical Code (NEC) requires between wiring, panels, overhead conductors, and everything around them.



## The distance between the AC power distribution box in the computer

---



### Understanding NEC Article 645

Ensure data center safety with Understanding NEC Article 645: The Protocol. Learn essential wiring, grounding, and shutdown rules for server rooms.

### The maximum dimensions of the computer room for small corporate DC

In the computer room of the considered DC, there are a total of 56 racks, each with a standard height of 42U or 47U. Assuming full utilization of each rack and equipment power consumption at 200 W, we



### Electric power distribution

A 50 kVA pole-mounted distribution transformer  
Electric power distribution is the final stage in the delivery of electricity. Electricity is carried from the transmission

### NEC Article 110.34: Electrical Room "Basics"

Minimum clearances are established for work spaces in front of high voltage - electrical equipment such as switchboards, control panels, switches, circuit



### How Much Space Is Needed Between Nearby Electrical Enclosures?

When running electricity for industrial applications, safety and functionality concerns are paramount. You need to arrange things in a way that is easy to use, provides power as needed, and

### Computer room location

The computer room must be in a noncombustible or fire-resistant building or room. The computer room must not be above, below, or adjacent to areas where hazardous materials or gases



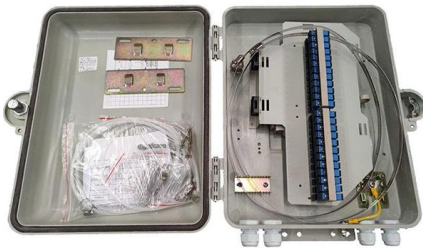
### Safety Clearance Recommendations for Electrical Panel

Clearance Tables includes working space and clearance around indoor electrical panel, Circuit Board (NES 312.2), clearance for conductor entering



## Nine Recommended Practices for Grounding

Grounding and bonding are the basis upon which safety and power quality are built, and they provides low-impedance path for fault current.



## Introduction to Grounding in AC Power Systems

In alternating current (AC) power systems, grounding, also known as earthing, is a crucial concept that safeguards the safety of electrical systems and guarantees their optimal performance. Creating a

### electrical

How far off the floor should my circuit breaker box be? I'm changing from a 100 to a 200 amp. The lead in wires are underground and come into the bottom of box making them too short to



## Chapter 1: Overview of The Power Distribution System

In this chapter, we will give an overview of the Power Distribution System starting from the Medium Voltage transmission line through the transformers into the Low



## AC Equipment Grounding: Creating a Safe Fault Current

The equipment grounding conductor, bonded to the grounded conductor, provides a safe and secure low impedance path for the ground-fault

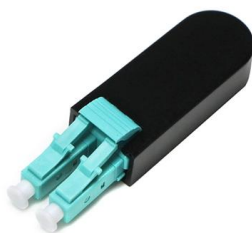
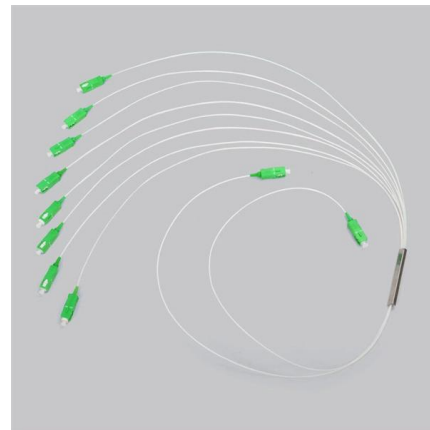


## AC Distribution Box (ACDB) , Key Role in Solar Power

AC Distribution Box (ACDB), its role, components, and importance in managing safe, efficient solar power systems. Learn how it works in solar setups.

## Computer room location

The computer room should be in a noncombustible or fire-resistant building or room. The computer room should not be above, below, or adjacent to areas where hazardous materials or



## Dedicating Space for Electrical Equipment in New Buildings: What You

Be mindful that the swing of the equipment doors does not impede the required access/egress space of 24 inches wide and 6.5



## Know how to size an electrical room properly

In this electrical room sizing example, learn how to size the room and position the equipment to meet NEC requirements.



WebiTelecomms Cabling



## TIA-942 Data Center Standards Overview

The standard recommends locating the entrance room outside of the computer room for better security. When located within the computer room, the Entrance Room should be consolidated with the MDA. It

## What is the use of the AC distribution box?

To sum up, the AC distribution box plays a very important role in the power system, providing important support and guarantee for the distribution, control, protection and monitoring of electric energy.



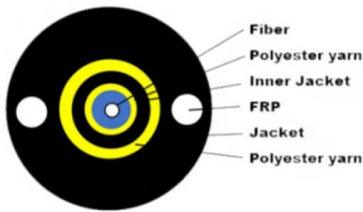
## Electric power transmission

The combined transmission and distribution network is part of electricity delivery, known as the electrical grid. Transmission lines transmit either alternating



### Safe Clearances for Electrical Equipment: Working

In many commercial facilities, electrical equipment rooms have rows of equipment operating at more than 150 volts to the ground. The aisle (s) between pieces of



### Computer room overview and location requirements

The room must be located away from sources of electromagnetic interference. Examples: Noise sources include power transmissions, motors and generators, X-ray equipment, radio or radar

### What is the Minimum Ground Clearance for Overhead

The distance between the ground and the loaded conductor (overhead power line) is known as conductor-to-ground clearance or simply ground clearance. The



### Electrical room

A large electrical room may have extensive provisions for grounding (earthing) and bonding enclosures of electrical equipment to prevent stray voltage and danger of



### WORLD WIDE WEB JOURNAL Home

O'Reilly & Associates, Inc. 103A Morris St.  
Sebastopol, CA United States



### Electrical Panel Safety Clearance Guidelines , PDF

It outlines minimum clearance distances for working spaces, entrances, overhead lines, and exposed live parts. Clearances vary depending on voltage levels, from



### Electrical Clearances: Requirements and Safe Distances

NEC Section 110.26 spells out three dimensions for this space. The working space must extend at least 36 inches deep, measured outward from the front of the panel. That 36-inch figure applies to



### Safety Clearance Recommendations for Electrical Panel

One Entrance at each end of the equipment. Get access to premium HV/MV/LV technical articles, electrical engineering guides, research studies and





### Table 110.26 (A) (1) Working Spaces.

In the 2017 NEC ®, new dimensions are given for work space depth when the voltage to ground is between 601 volts and 1000 volts. Conditions 1, 2 and 3



### NEC Requirements for Panelboards and Load Centers

In sub-panels, the neutral and ground bars must be separated to prevent ground faults. In the main panel, the neutral and ground must be bonded by Main

### NEC Working Clearance Requirements: A Visual Guide

The core components of this standard involve the Depth of working space, which varies based on the system's Voltage-to-ground and the nature of the opposing



## Contact Us

For datasheets, pricing, or custom high-speed optical interconnect solutions, please visit:

<https://www.syropy.com.pl>