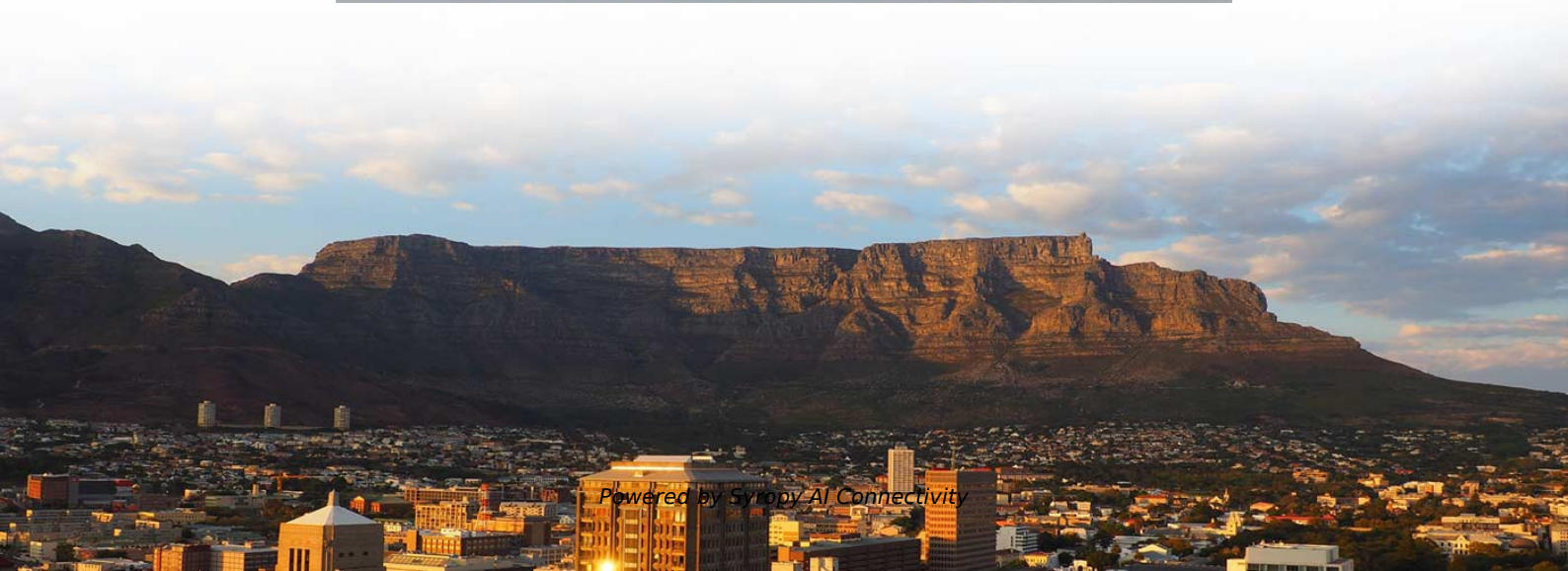


The cable tray cover is secured with a snap fastener



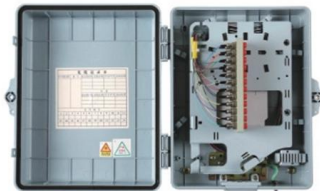


Overview

The clip method is one of the simplest and fastest ways to secure cable tray covers. By attaching clips to the cable tray and snapping the cover into place, this method is quick and requires no complex tools or skills. offers covers for our Snap Track channel tray and Fittings and are available in 2", 4", and 6" widths. The galvanized steel cable tray system of BRX Series, thanks to the rounded edges and its particular design, is easy to install and safe for the cables, as well as the ideal solution even in more aggressive environments, with the special HP finishing (Zn +Mg).



The cable tray cover is secured with a snap fastener



Key Measures for Secure Cable Tray Covers Installation

By attaching clips to the cable tray and snapping the cover into place, this method is quick and requires no complex tools or skills. However, it is

Cable Tray Accessories , PohlCon - Partner from start to future.

In addition to the covers, optional accessories in various materials and coatings are available to supplement the cable support system, e.g. gutter connectors, connecting plates, separating strips



BRX/BRN NP SNAP-FIT COVER

The galvanized steel cable tray system of BRX Series, thanks to the rounded edges and its particular design, is easy to install and safe for the cables, as well as the ideal solution even in more

NEC Article 392 Guide: Ensuring Compliance for Cable

Master NEC Article 392 with our comprehensive



guide. Learn essential cable tray requirements for installation, grounding, and fill capacity to



Causes and Preventive Measures for Instrumentation

A common but often overlooked safety hazard is the falling off of cable tray covers. This issue can lead to potential injury, equipment damage, or service disruptions.

Wire Duct, Raceway & Tray

A cable tray is a rigid, structural system used in commercial and industrial settings to support and manage power and communication cables. While it serves a similar function to raceway or wire



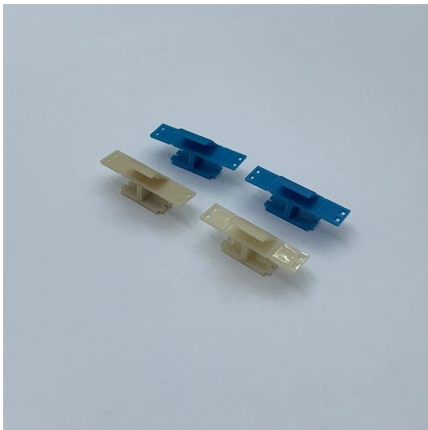
Best practice guide to cable ladder and cable tray

Cable ladder and cable tray systems The following recommendations are intended to be a practical guide to ensure the safe and proper installation of



B-Line series Cable Tray Design Considerations

Our wind certification report provides you with list of acceptable B-Line series cable tray supports, fittings and covers based off of the environmental conditions, cable loading, and type of cable tray in your



Cable Tray Technical Guide A practical guide to product selection and

Conductors used in cable tray must be specified in Table 19 of the CEC and, except where permitted under paragraphs [12-2202(2)] and [(3)], covered by a continuous metal sheath or an interlocking

A Guide to Cable Tray Accessories and Their Functions

Explore a detailed guide to cable tray accessories and understand their uses in ensuring safety, stability, and efficiency in electrical system



Fastener , UMI Cable Support Solution

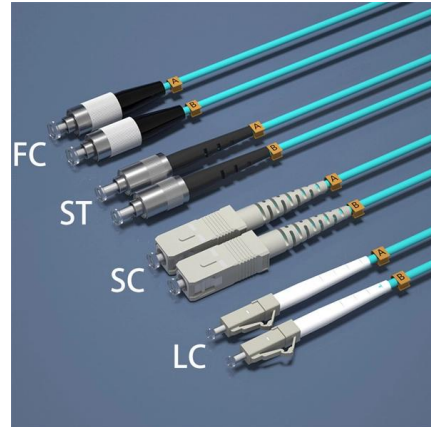
Adhesive fasteners: In certain situations, adhesive pads or tapes may be used to secure cable trunking or tray to surfaces where drilling holes is not feasible or





FRP Clamp to elevate cover and improve ventilation

For "snap-on" covers you simply use the clamp as a jig and drill through the side profile of the cable tray and secure it using an M16x16 panhead screw and a M6



Cable Tray Technical Guide A practical guide to product selection and

SOLID-BOTTOM CABLE TRAY Providing additional cable protection, solid-bottom cable tray is sometimes preferred to support and protect numerous small instrumentation and control cables.

Cable tray manual

Nearly every aspect of cable tray design and installation has been explored for the use of the reader. If a topic has not been covered sufficiently to answer a specific question or if additional information is



Mounting instructions

The mounting drawings of the screw-on cable tray systems show either perforated or unperforated cable trays. All the connectors, fittings and accessories shown can be mounted on both perforated and



Industrial Cable Cover Protector

TechLine Mfg. offers covers for our Snap Track channel tray and Fittings and are available in 2", 4", and 6" widths. The covers are designed to:
Provide maximum cable protection
Reduce EMI effects



B-Line series full fastener catalog

From cable tray systems and strut systems to spring steel fastener solutions, the B-Line series business is focused on innovative solutions. Within this Fastener catalog, you will find several innovative, time

Fireproof Cable Tray Cover Inspection Checklist Facility Maintenance

Following this fireproof cable tray cover inspection checklist as part of your facility maintenance routine helps ensure continuous fire protection, maintain regulatory compliance, and extend the service life



Connecting Cable Trays: Your Guide to Secure and

Learn common methods for connecting cable trays safely and efficiently. Our guide covers splice plates, quick-connects, and key tips for secure



Verified Supplier Cable Tray Fasteners Stainless Steel Locking Buckle

Shop high-quality cable tray fasteners for secure and efficient cable management. Find durable, reliable, and customizable solutions for your industrial needs.

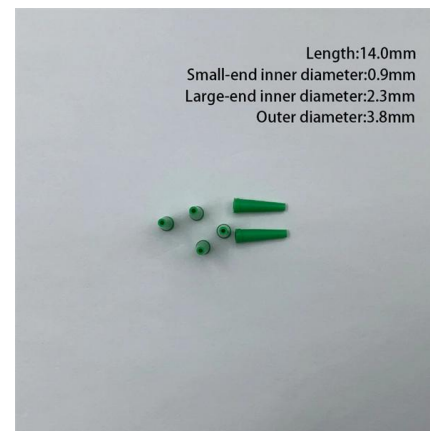


Cable Tray Fasteners & Snap Track Fasteners

TechLine Mfg.'s patented push pin fasteners eliminate nuts & bolts, thereby greatly speeding the installation of the Snap Track System. Contact us!

BRX/BRN NP SNAP-FIT COVER

BRX perforated steel cable trays The galvanized steel cable tray system of BRX Series, thanks to the rounded edges and its particular design, is easy to install and safe for the cables, as well as the ideal



MP Husky Cable Tray Catalog.pdf

This cover clip is designed to fasten the Electray covers (flange-out) shown in this section. Each clip is mill-galvanized steel and furnished with a thumb screw to facilitate inverted installation on flanged



LEGRAND CABLE TRAYS TECHNICAL GUIDE

In accordance with its continuous improvement policy, Legrand reserves the right to change the specifications and illustrations without notice. All illustrations, descriptions and technical information



Cable Tray (Snap On Flange) - G-STEEL TRADING

A cable tray that specialized with snap on flange. Usage: is used in regulating the conduct of cables, repair and detection of breakdowns inexpensive, Add and



26108-20Exam (pdf)

Cable tray used in a caustic environment should be coated with _____. a) rubber b) machinist's oil c) PVC d) latex paint 24. NEC Article 392



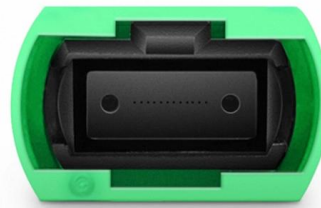
11 Types of Cable Tray Covers and How to Choose It New

That is, it covers the top section of the cable tray. In this guide, you will learn about the different types of cable covers and how to choose a perfect



Cable Tray Cover Types: Designs, Materials & Selection

A complete guide to cable tray cover types: Compare 9+ designs, material specifications (NEMA/IEC), selection factors & maintenance best practices.



Contact Us

For datasheets, pricing, or custom high-speed optical interconnect solutions, please visit:

<https://www.syropy.com.pl>