

# **The aggregation layer is a Layer 2 switch**





## Overview

---

An aggregation switch operates at Layer 2 or Layer 3 of the OSI model, depending on the configuration and topology of the network. The controller uses protocols, such as Link Aggregation Control Protocol (LACP) or Static Link Aggregation, to combine physical links into a single. An aggregation switch is a network device that consolidates traffic from multiple access switches, wireless access points, or other edge devices and forwards it to core switches or routers. By bundling multiple network connections into a single high-bandwidth link, aggregation switches help.



## The aggregation layer is a Layer 2 switch

---

### Understanding Switch Aggregation: A Comprehensive



Layer 2 and Layer 3 switches play distinct roles in network aggregation setups, and understanding their differences can help in making

### Switch Features: Managed vs Unmanaged, Aggregation, Layer 2 vs Layer

Learn the difference between managed and unmanaged switches, and how switch aggregation can enhance your network performance. We also cover the key distinctions between Layer 2 and Layer 3 switch

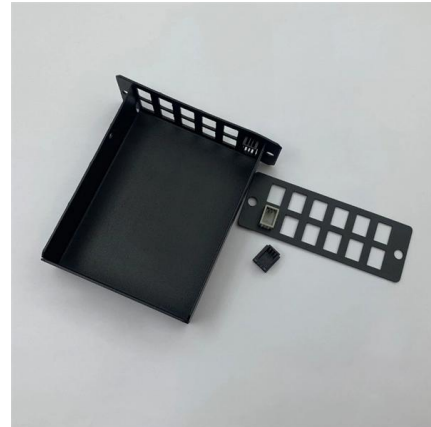


### What Is an Aggregation Switch and How to Choose?

Unlike core switches, aggregation switches can be either Layer 2 or Layer 3 switches. When choosing a Layer 2 switch, the routing and management

### What Is an Aggregation Switch?

An aggregation switch sits between access layer switches and the core network, acting as an intermediary. It collects traffic from multiple access switches, aggregates it, and then forwards



### Link aggregation

OSI layer 2 (data link layer, e.g. Ethernet frame in LANs or multi-link PPP in WANs, Ethernet MAC address) aggregation typically occurs across switch ports, which



### What is an Aggregation Switch?

The aggregation switch is located in the middle of the network architecture, which is equivalent to a middle-level manager of a company. It



### What is an Aggregation Switch?

Unlike the core switch, the aggregation switch can choose either the layer 2 switch or the layer 3 switch. When the layer 2 switches are selected, the





## What is Aggregation Layer in Networking

Learn about the aggregation layer in networking, its purpose, and how it connects to the distribution layer. Discover the benefits of using aggregation

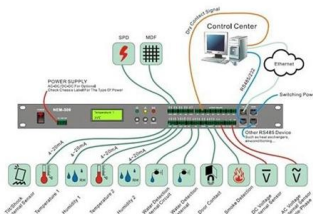


## Everything You Need to Know About Aggregation Switch

An aggregation switch operates at Layer 2 or Layer 3 of the OSI model, depending on the configuration and topology of the network. The

## Switch (3) Features of access layer, aggregation layer and core layer

1 Is the access layer, convergence layer and core layer classified as switches? First of all, it is necessary to clarify a concept: access layer switches, aggregation layer switches, and core layer switches are



## What is Switch Aggregation, Its Role and Selection Advice

When a Layer 2 switch is used as the aggregation switch, routing and management policies are determined by the core switch rather than the aggregation switch. This article wraps up

## In-depth analysis: What is an aggregation



In many network constructions, we have all heard of switches. So do you really understand switches? Why are aggregation switches often overlooked?



**Gartner , Delivering Actionable, Objective Insight to**

Gartner provides actionable insights, guidance, and tools that enable faster, smarter decisions and stronger performance on an organization's mission-critical priorities.

**Multi-chassis link aggregation group**

A multi-chassis link aggregation group (MLAG or MC-LAG) is a type of link aggregation group (LAG) with constituent ports that terminate on separate chassis, primarily for the purpose of providing



**What is a network switch? , Switch vs. router**

A network switch forwards data between devices, unlike routers, which forward data between networks. Learn about Ethernet switches, managed switches, and more.



## Datacenter Core and Aggregation Design

Introduction Layered Datacenter Architecture  
Datacenter Core Layer Datacenter Aggregation  
Layer Datacenter Access Layer Related  
Information



### Aggregation layer , FortiSwitch 7.6.0 , Fortinet Document Library

Multiple blocks of pairs of aggregation switches extend the design of this key layer if there are more than 24 floors or buildings in the campus. This layer is also where data center services are provided.

### HPE Aruba Networking CX switches

HPE Aruba Networking CX 6300 Switch Series  
Layer 3 stackable access and aggregation  
switches with Multi-Gigabit Ethernet, High Power  
PoE, and up to



### Aggregation Layer

Aggregation-layer submodule The aggregation-layer submodule plays a pivotal role in providing a highly reliable, scalable "middle layer" for bringing together the traffic from the access-layer submodule,



## Data Center Aggregation Layer Design and Configuration with

This chapter covers the design recommendations for a data center design deployment consisting of a Cisco Nexus® 7000 Series Switch at the aggregation layer and a Cisco Nexus 5000 Series Switch at



### Aggregation Layer

The switch at the aggregation layer collects bits of communication from the edge layer, and conveys them to the core layer switch. The switch at the core layer connects to the Internet, and manages

### LANCOM Tech Paper Two-Tier and Three-Tier Switch Architectures

Core-layer switches make up the top layer or core of the network. The aggregation or distribution switches are the intermediary layer between the core and access layers. The lowest tier is the



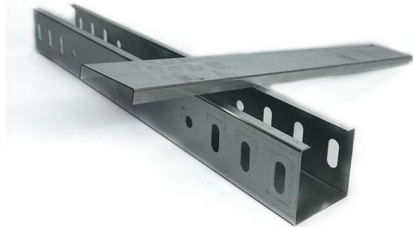
### Core, Aggregation, or Access Switches? Choose the

Aggregate and connect access switches for users into aggregation switches and within the data center to achieve a high availability, high



## What is Switch Aggregation, Its Role and Selection Advice

The aggregation layer serves as the convergence point for multiple access layer switches and is responsible for handling all the communication traffic from the access layer devices

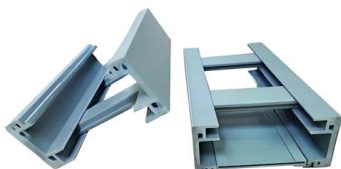


## Ubiquiti Aggregation, 8-Port Layer 2 Switch (USW)

Buy Ubiquiti Aggregation, 8-Port Layer 2 Switch (USW-Aggregation) with fast shipping and top-rated customer service. Once you know, you Newegg!

## What Is an Aggregation Switch and How to Choose?

These aggregation switches typically operate at Layer 2 or Layer 3 of the OSI model, depending on the network topology and configuration



## Data Center Design: Basic 3 Layers, Core, Aggregation,

Key Features of 3 layers design of Data Center: Data center network is divided into 3 standard three-layer structure. The layering is mainly based on the



## Contact Us

---

For datasheets, pricing, or custom high-speed optical interconnect solutions, please visit:

<https://www.syropy.com.pl>