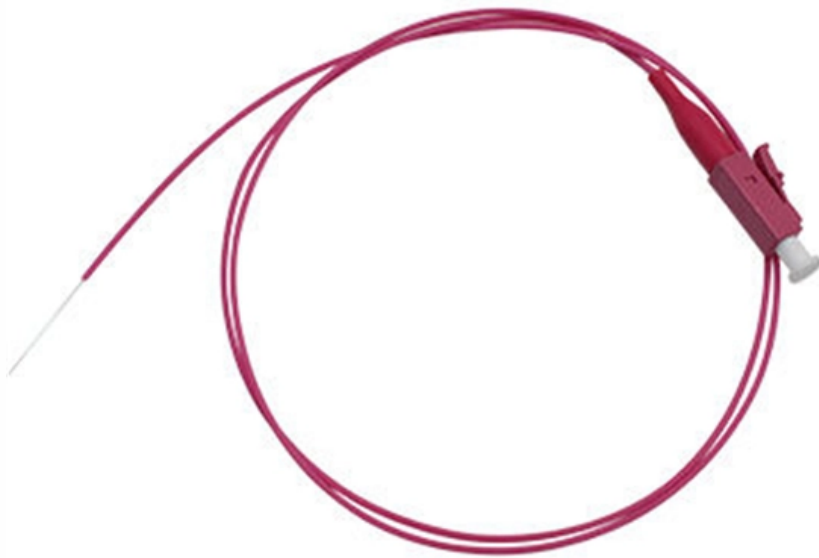


The SFP optical module cannot be removed





Overview

To safely remove an SFP module, follow these steps: Disable the port in your network device settings or power off the device to avoid electrical damage. Gently pull the module latch or release ring, depending on the module design. Whether you are performing routine maintenance, replacing a failed optical transceiver, upgrading link speeds, or troubleshooting a. However, with the right approach and careful handling, you can safely remove a transceiver stuck in a switch without causing damage to your network equipment. For DS110DF111, it is followed by a 10G SFP optical module, but after repeated insertion and removal, the optical module cannot be used, and the link status is displayed down. Note: Before starting the installation or removal process, ensure that you have read and understood the documentation provided by the SFP module manufacturer and.



The SFP optical module cannot be removed

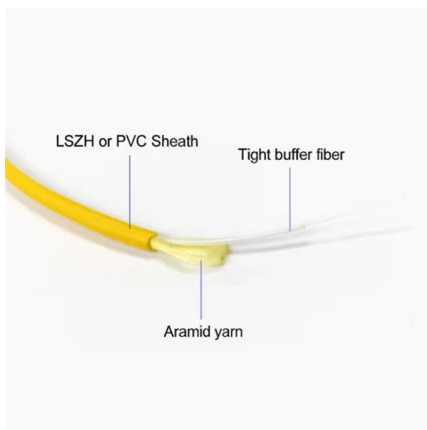


Unveil the Secrets of SFP Module Installation and Removal

Master the art of effortless SFP installation and removal with our comprehensive guide. Explore the general rules, essential preparation, and step

How to Install and Remove SFP Transceiver Modules?

SFP transceivers allow for the transmission and reception of optical signals in networking devices such as switches, routers, and media converters. In

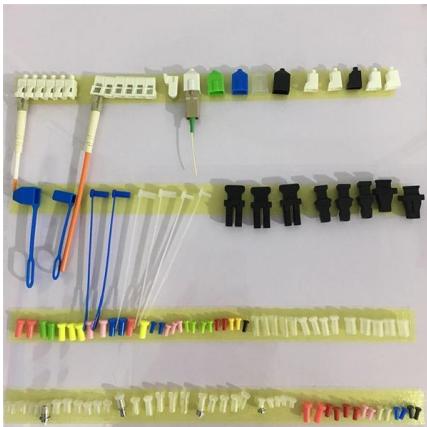
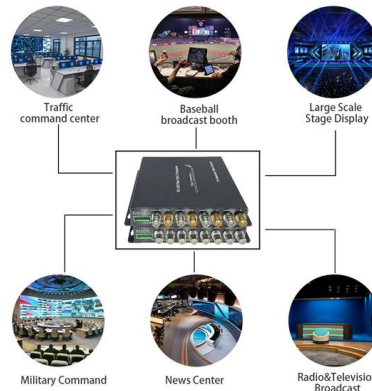


How To Check If Interconnected Optical Ports Cannot

After such an optical module is installed in an optical interface, the neighbor interface cannot have an optical module installed because the non-certified optical module

How to Install and Remove SFP Transceiver Modules?

Installing and removing SFP (Small Form-factor Pluggable) transceiver modules is a common task in managing and maintaining fiber optic networks.



Troubleshooting and Repairing Optical Transceiver Failures in SFP/SFP+

SFP or SFP+ optical transceiver failure can happen in multiple recognizable ways. The most notable fault is the "module not detected" error, which describes a situation in which a switch

How to Remove SFP Module from Switch Step-by-Step

Learn how to remove an SFP module from a switch safely and correctly. Step-by-step guide covering hot swap, latch types, stuck modules, and



Step-by-Step Guide for Installing and Removing SFP

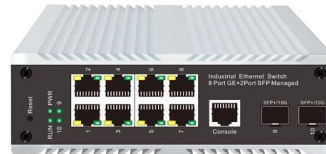
SFP (Small Form-factor Pluggable) transceiver modules are widely used for connecting network devices such as switches, routers, and servers.





FlexStack-Extended

The SFP+ port of the module cannot be changed to a network port. fiber stack module has two SFP+ interfaces, which allows for long-reach stacking using standard optics. Fiber stack ports are used

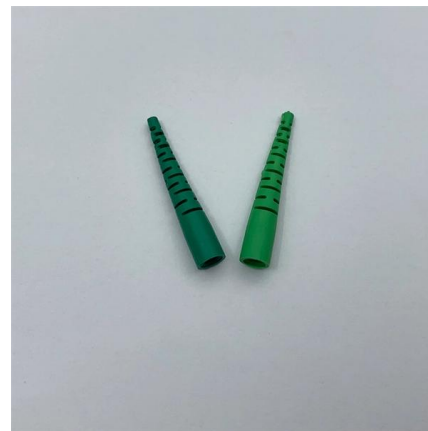


How to Install and Remove SFP Transceiver Modules? - Fiber Optic

Avoid getting dust and other contaminants into the optical ports of your SFP modules, because the optics will not work correctly when obstructed by dust. Transceiver modules are

Smart Keeper Fiber Optic Module Lock Plus , SmartKeeper

Protect your SFP fiber optic modules from unauthorized removal, tampering, and accidental disconnection with the SmartKeeper SFP Fiber Optic Module Lock



DS110DF111: the SFP optical port fails to be inserted

For DS110DF111, it is followed by a 10G SFP optical module, but after repeated insertion and removal, the optical module cannot be used, and the link



How to Remove Stuck SFP Modules from Network

Guide to safely remove stuck SFP transceivers from switch ports. Step-by-step solutions for wedged modules and broken latching mechanisms.



How to Install and Remove SFP Transceiver Modules?

Not to install or remove the optical transceivers with fiber cables attached to them as this may cause potential damage to the cable or module, which will limit the performance of the

SFP Optical Transceiver Tutorial on Installation, Removal and

This optical transceiver tutorial will introduce how to install SFP module, how to remove SFP module, and give some insights on the operation precautions. Following these tips will maintain



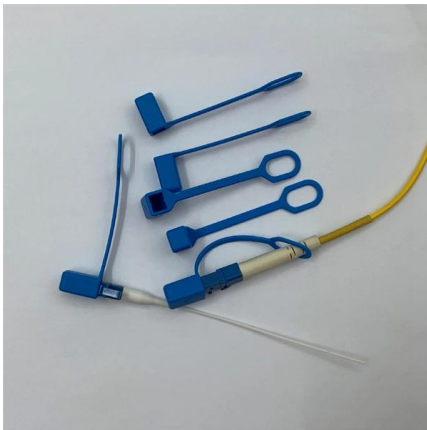
How to install and remove a optical transceiver

To Remove an SFP+ Optical Transceiver Module
Wear an anti-static wrist strap and rubber gloves.
Disconnect the fiber optic cable or network copper



How to Install and Remove SFP Transceiver Modules?

Fiber-Mart, worldwide leading supplier in fiber optic network, ftx, fiber cabling, fiber testing. How to Install and Remove SFP Transceiver Modules?



Stratix 8000 and 8300 Ethernet Managed Switches Installation

WARNING: When you insert or remove the small form-factor pluggable (SFP) optical transceiver while power is on, an electrical arc can occur. This could cause an explosion in hazardous location

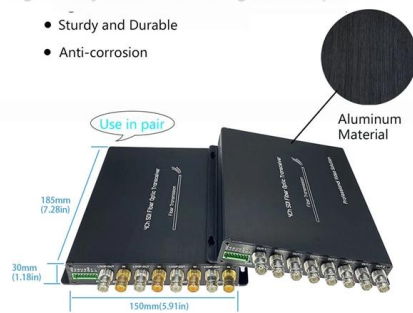
How to install and remove a SFP / SFP+ Transceiver

Compatibility Check of SFP / SFP+ Modules Before making any change or replacement of the transceiver component we must be sure to have a fully hardware compatible module when using it



High Quality Aluminum Housing with Compact Size

- Sturdy and Durable
- Anti-corrosion



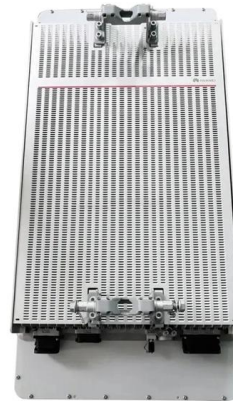
How to Install or Remove SFP, SFP+, QSFP, and XFP

To safely remove an SFP module, follow these steps: Disable the port in your network device settings or power off the device to avoid electrical



How to Install or Remove SFP, SFP+, QSFP, and XFP

SFP and other optical modules are key components of any fibre optic network. They enable high-speed connections between active equipment and



How to install and remove SFP/SFP+ transceiver?

How to remove an SFP or SFP+ transceiver
Remove the fiber cable connected to the SFP or SFP+ module (if present). Using your finger, pull the bail

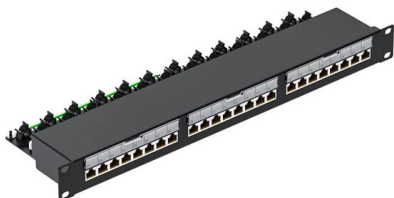
How to install and remove a SFP / SFP+ Transceiver

It is strongly recommended that you do not install or remove the SFP / SFP+ modules with fiber-optic cables attached to it because of the potential of damaging the cable, the cable connector, or the



Step-by-Step Guide for Installing and Removing SFP

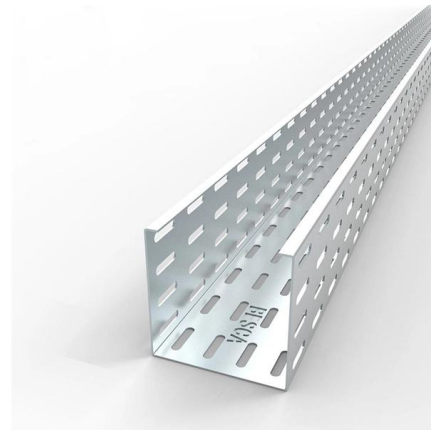
In this step-by-step guide, we will walk you through the process of installing and removing SFP transceiver modules to ensure proper handling and





SFP ?????? ?????? ?????? ?????? Switch-???

Don't leave your switch ports empty! Learn what an SFP port is, how it differs from standard RJ45 ethernet, and when to use it for fiber optic speeds and long-distance links.

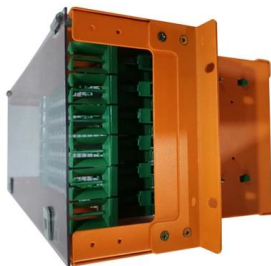


How to Install and Remove Optical Modules Safely

Small Form-factor Pluggable modules (SFP module) are the workhorses of modern network connectivity, enabling flexible fiber optic or copper

SFP Module Installation and Removal Guide

Before pulling out the SFP module, you must release the SFP module by pushing the sliding tab. If you pull the SFP module without releasing the tab, the SFP module



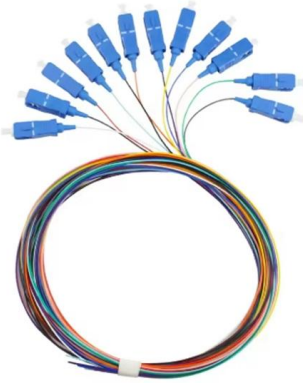
What Is an Optical Module and Its FAQs (V200)

What Is an Optical Module and Its FAQs (V200) Describes what an optical module is and FAQs, including the fundamentals, appearance and structure, key performance counters, common types,



Addressing SFP Failures: Fix Your Malfunctioning SFP

There are several reasons to cause SFP optical slot failures. For example, SFP ports are exposed to the environment in long time and



Unveil the Secrets of SFP Module Installation and Removal

Master the art of effortless SFP installation and removal with our comprehensive guide. Explore the general rules, essential preparation, and step-by-step procedures to ensure flawless

Installing and Removing the SFP and XFP Modules

CautionProtect the SFP modules by inserting clean dust covers on them after the cables are removed. Ensure that you clean the optic surfaces of the fiber cables before you plug them back into the optical



Contact Us

For datasheets, pricing, or custom high-speed optical interconnect solutions, please visit:
<https://www.syropy.com.pl>