

# **The Role of Communication Aggregation Switches**





## Overview

---

They support link aggregation protocols such as Link Aggregation Control Protocol(LACP) and Static Link Aggregation, which allow multiple physical links to be combined into a single logical connection. This enhances bandwidth, redundancy, and ensures failover capability in case of a. The three layers of a traditional three-layer network design are the core layer, aggregation layer, and access layer. In conventional network construction, we divide the switches into a hierarchical structure according to the number of connected network devices.



## The Role of Communication Aggregation Switches

---



### What is an Aggregate Switch?

The aggregate switch plays a critical role in ensuring network performance and reliability. These switches are placed strategically within the network architecture to reduce bottlenecks,

### What is an Aggregation Switch?

What is the Role of the Aggregation Switch in the Network? The aggregation switch is located in the middle of the network architecture, which is



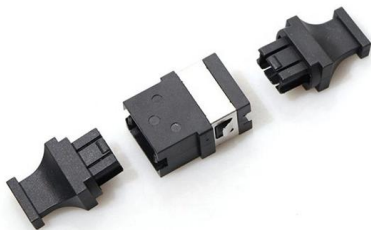
### What is Switch Aggregation, Its Role and Selection Advice

When an aggregation switch receives data from access switches, it performs local routing, filtering, load balancing, and QoS priority management. It also handles security mechanisms,

### Understanding the Role of Aggregation Switch in

Each aggregation switch undergoes extensive testing to ensure that it meets the highest standards of reliability and performance.

Conclusion In



### sfp aggregation switch

In today's interconnected world, networks play a critical role in facilitating communication and seamless data transfer. A key component of modern networks is the aggregation switch, which helps



### What Is an Aggregation Switch?

**The Role of Aggregation in Network Architecture**  
An aggregation switch sits between access layer switches and the core network, acting as an intermediary. It collects traffic from multiple

### Aggregation Switch

An aggregation switch refers to a type of switch used to connect multiple ToR switches to a core switch/router in a cloud data center network. It enables high-bandwidth aggregation ports to be



### Understanding the Role of Aggregation Switch in

Aggregation switches, often referred to as distribution switches, play a pivotal role in the hierarchical network architecture. These switches serve as



LoRa handheld portable base station

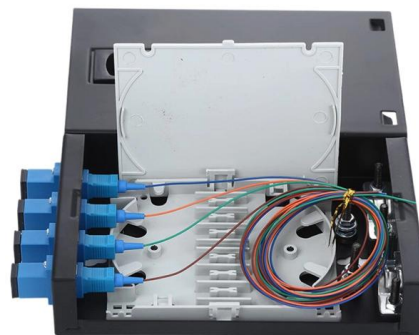


### The Network DNA: Networking, Cloud, and Security

Master networking, cloud, and security with in-depth analysis, tutorials, and research. Stay ahead of the curve with our expert tech blog.

### Core, Aggregation, or Access Switches? Choose the

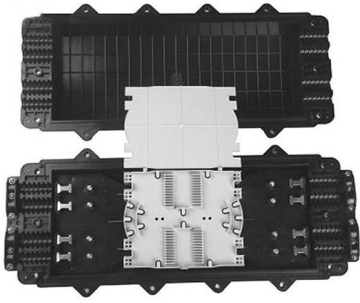
Knowing the roles of core, aggregation, and access switches in contemporary network topology becomes essential to create effective and





## What Is an Aggregate Switch?

Discover the role of an aggregation switch and its function in a network. Explore differences between aggregation, access, and core switches.



## Data Center Aggregation Layer Design and Configuration with

Introduction This chapter covers the design recommendations for a data center design deployment consisting of a Cisco Nexus® 7000 Series Switch at the aggregation layer and a Cisco Nexus 5000

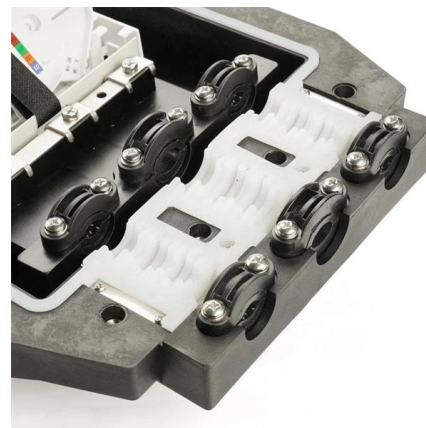


## Understanding Switch Aggregation: A Comprehensive

Defining switch aggregation and its role in network architecture Switch aggregation, also known as link aggregation or trunking, is a method used

## What Is Distribution Switch and Why Do We Need It?

Why distribution layer switch is needed in network layers? In general, aggregation switch reacts on multiple switch aggregation and layer 3 routing





### **In-depth analysis: What is an aggregation switch?**

In many network constructions, we have all heard of switches. So do you really understand switches? Why are aggregation switches often overlooked?

### **Link Aggregation: What is it, and How Does it Work?**

Multi-chassis versions of link aggregation One of the really interesting ways of deploying an aggregated link is to connect a device to a redundant pair of



### **Aggregation Layer**

Aggregation-layer submodule The aggregation-layer submodule plays a pivotal role in providing a highly reliable, scalable "middle layer" for bringing together the traffic from the access-layer submodule,

### **Standalone AC Solution: Aggregation Switches Function as Gateways**

In this example, aggregation switches set up stacks that function as gateways for wired and wireless users on the entire network and are responsible for routing and forwarding of user services.





### Aggregation layer , FortiSwitch 7.6.0 , Fortinet Document Library

Its primary goal is to increase network scalability by providing a single place to interconnect multiple access switches and the core layer.

### Aggregation Network

The aggregation network can use the following technologies for forwarding data: IEEE 802.11, Ethernet, ADSL, or optical fiber . Two types of gateways in the architecture play a key role in data



### Why You Need a Fiber Aggregation Switch and How it

Roles of an Aggregation Switch in Network Architecture Increasing network efficiency, improving data control, and creating redundancy between

### Understanding Switch Aggregation: A Comprehensive

What is Switch Aggregation, and Why is it Important? Switch aggregation, also known as link aggregation or trunking, is a method used in





## What Is an Aggregation Switch and How to Choose?

Discover the role of aggregation switches. Explore differences between aggregation, access, and core switches, and choose the right model for your network.

### Aggregation layer , FortiSwitch 7.6.0 , Fortinet Document Library

Aggregation-layer platforms The most appropriate FortiSwitch unit to form the aggregation layer comprises many 10/25/40 gigabit Ethernet ports to address the access layer and a few 100-GbE

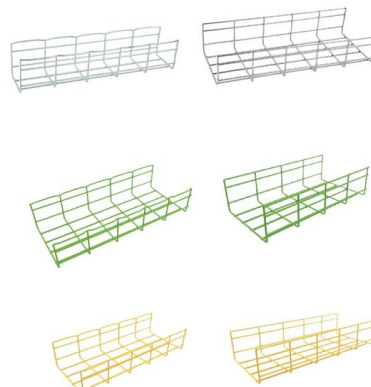


### What is an Aggregation Switch? , Features and Practical Benefits

Conclusion: What is an aggregation switch? In network architecture, they are now extremely important. The technology behind these switches is link aggregation which is the process

### Everything You Need to Know About Aggregation Switch

Aggregation switches play a crucial role in connecting multiple buttons at the core level of a computer network. These switches act as a central hub,





## Contact Us

---

For datasheets, pricing, or custom high-speed optical interconnect solutions, please visit:

<https://www.syropy.com.pl>