

Terminal Box Installation Requirements





Overview

1 This engineering standard defines the methods of selecting, sizing, installing, and supporting terminal boxes. While directed toward Air Products-owned and -operated facilities, it shall be considered the minimum requirements for any. To ensure the safe and reliable use of terminal boxes in SIS systems, compliance with the following standards and guidelines is essential: IEC 61511 is the primary standard governing safety instrumented systems in the process industry. These sturdy solutions are certified according to global standards such as ATEX, IECEx.



Terminal Box Installation Requirements

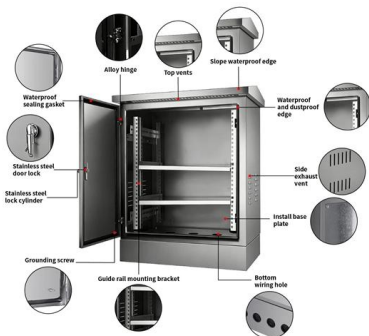


what is a terminal box

Definition of junction box A junction box, also known as a wire box or terminal box, is a closed container used to fix, protect and connect wires and

Terminal Box vs. Junction Box: Comprehensive

Terminal Box: Although more expensive, boxes are worth the money due to better wire management and long-term dependability.
Junction Box: these



I/O terminal blocks, ratings and requirements

Table 1. I/O terminal blocks, functions, ratings, requirements, and cables Terminal Block label Terminal labels Function, ratings, and requirements To determine wire size and maximum

Cautions and Requirements for Installation of

Distribution box is a low-voltage distribution device which assembles switchgear, measuring instruments, protective appliances and auxiliary equipment in a closed



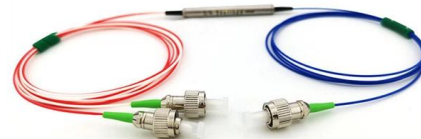
Terminal boxes , thuba Ltd.

The requirements of EMC terminal boxes for use in instrumentation and control applications are met with our metal and interior coated housings. The coating in



Terminal Box Installation: A Detailed Guide

The proper installation of a terminal box is a critical skill for any electrician or electrical technician. By following the guidelines outlined in this guide, you can ensure that your installations are safe, reliable,



Terminal boxes Installation requirements - Mounting & Fitting

Explore terminal boxes installation requirements, mounting guidelines, and fitting instructions for secure electrical connections. Order quality components.



Optical Fiber Terminal Box Functional Requirements

The installation position, installation method and height of information module, multi-user optical cable terminal box and assembly point distribution module shall meet the design requirements.



Terminal boxes , Junction boxes , Ex , Ex e , Ex d , ATEX

We offer bespoke, custom-made terminal boxes and terminal box combinations, as well as standard products with short delivery times. Our products are certified for installation technologies all over the

Methods of Selecting, Sizing, Installing, and Supporting Terminal

PURPOSE 1.1 This engineering standard defines the methods of selecting, sizing, installing, and supporting terminal boxes. SCOPE 2.1 This standard applies to all terminal box installations.



Terminal Box vs. Junction Box: The Complete

Confused by Terminal Box vs. Junction Box? Discover key technical differences, NEC code requirements, and ROI analysis to select the right



HEPA Filter Terminal Box Installation Precautions

1. The first important point before installation is that the size and efficiency requirements of HEPA filter terminal box must meet the requirements of



Feasibility and Standard Requirements for Using

However, the selection and installation of terminal boxes in SIS systems must take into account stringent safety, reliability, and redundancy requirements to ensure

Terminal boxes

At Mack Automation, we produce terminal boxes according to conventional standards with multicore or bus cables. In doing so, we adapt to your individual specifications and requirements to achieve the



Terminal box, terminal boxes, terminal boxes, terminal box

Terminal boxes are suitable for the following areas of application, for example: Wiring technology, measurement and control technology, control engineering, lift construction, mechanical engineering,



Installing Auxiliary Terminal Cabinets , PDF , Electrical Wiring

This document provides instructions on installing various auxiliary terminal cabinets. It discusses mounting wire gutters, electrical pull boxes, fire alarm control panels, CCTV server cabinets, and

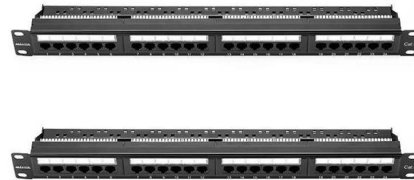


Junction Box Installation & Operation Manual

Before installing the unit, please read these instructions and familiarize yourself with the requirements and functions of the device. The required personal protective equipment must always be worn when

Crouse-Hinds series GHG7 Terminal Boxes catalog page

The CEAG installation system provides an economical way of mounting the terminal boxes on walls, trellis work and pipes. The terminal boxes are suited for the use of single or multiple cable glands.



The Ultimate Guide to Terminal Junction Box Wiring:

Learn how to properly wire terminal junction boxes for electrical connections. Understand the importance of proper wiring techniques, safety precautions, and



Terminal Box Installation: A Detailed Guide

1. Planning and Preparation Before commencing any terminal box installation, meticulous planning is essential. This phase involves assessing the project requirements, selecting appropriate

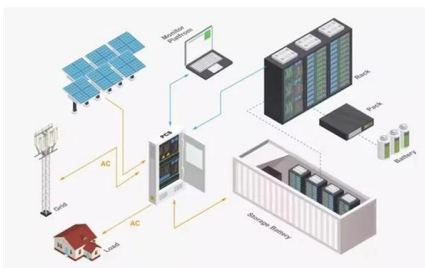
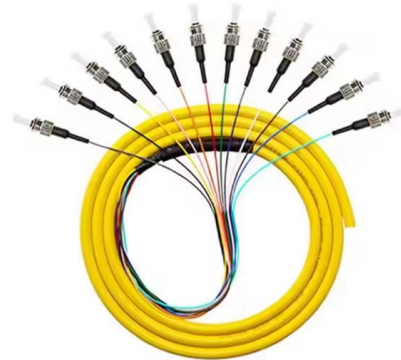


Terminal and Junction Boxes (Ex d) , Explosion Protection

To meet diverse installation requirements, a variety of enclosure dimensions, terminals, and cable gland options are available. The modular design allows for tailored configurations that align with specific

Terminal Boxes Made in the UK

Discover our full range of terminal boxes: junction boxes, ATEX certified, and outdoor solutions. Custom designs, fast UK delivery, 5-year guarantee.



All You Need To Know About Fiber Termination Boxes:

The indoor fiber distribution terminal is a compact fiber box solution for installation requirements in small to mid-sized MDUs, multiple dwelling units, or



Terminal junction box importance? wiring essentials

Master safe & efficient wiring! uncover the critical role of terminal junction boxes - insights you won't find anywhere else. learn essential electrical safety knowledge now.



Terminal Units

DDC controlled boxes require a minimum of 3' clearance in front of and the width of the DDC controller. DDC boxes shall be labeled with a unique identifier. Use U-M's terminal airflow unit clearance detail,

Comprehensive Guide to FTB: Installation and Maintenance

Preparation Before Installation Before starting the installation process, a series of preparations should be carried out. Firstly, an appropriate installation location is chosen to ensure



Electrical Junction Box NEC Code: Rules, Requirements

Plastic or nonmetallic boxes are often used where corrosion resistance or lightweight installation is important. NEC Junction Box Requirements: What the



Contact Us

For datasheets, pricing, or custom high-speed optical interconnect solutions, please visit:

<https://www.syropy.com.pl>