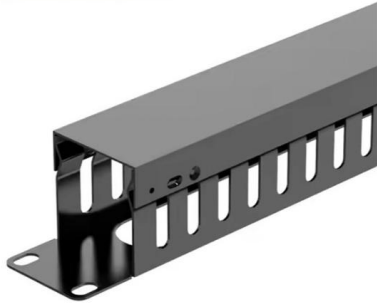


Temporary Level 3 Distribution Box Electrical Diagram





Temporary Level 3 Distribution Box Electrical Diagram



515.qxd

The electrical distribution system should be designed and installed to provide adequate capacity for the maximum anticipated load. Consideration should be given to the growing demand for job lighting,

Distribution Box Guide: Types, Components & Solutions

Understand distribution boxes (DB boxes) in 5 minutes. Learn about types, components, functions, and uses. Find the perfect DB box for your needs.



Electrical Distribution Systems

A single, or one-line diagram of a distribution system is a simple and easy-to-read diagram showing power supplies, loads, and major components in the distribution system (Figure 1).

Expert Guide: Select the Right Temporary Power Distribution Box

These temporary power distribution boxes are the foundations of site operations. They supply electricity to air compressors, chain saws, electric welders, and lighting systems--each with specific power needs.



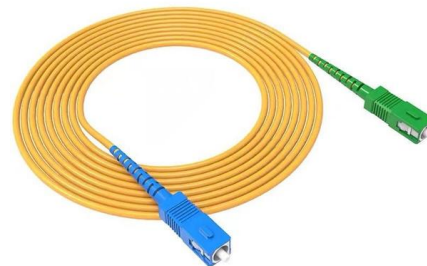
A Guide to Temporary Power Distribution Boxes , ATI

Temporary power distribution boxes are a popular method of providing electrical power to remote areas. Learn about the benefits of using



The Meaning and Function of Primary, Secondary, and Tertiary

Differences Between Primary, Secondary, and Tertiary Distribution Boxes Primary Distribution Box: Designed specifically for construction sites, conforming to relevant electrical codes.



TEMPORARY POWER

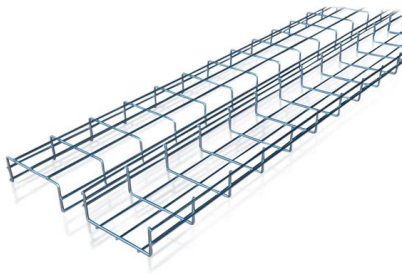
19180008 Rugged temporary power cords for use with the X-Treme Box™ to handle 50A 3-Pole/4-Wire 125/250v AC, safe appliance extension cords, cords for use in disaster recovery, restoration,



Low-voltage distribution networks



In European countries the standard 3-phase 4-wire distribution voltage level is 230/400 V. Many countries are currently converting their LV systems to the latest IEC standard of 230/400 V

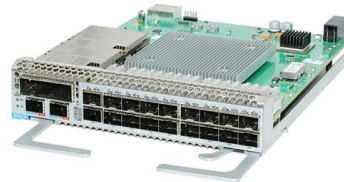


Temporary electrical wiring for construction sites

Temporary for construction Construction work requires electrical power for many purposes. However, exposure to weather, frequent relocation, rough use and other conditions not normally encountered

Temporary Electrical Supply Procedures , PDF , Mains

This document outlines health and safety procedures for temporary electrical installations on construction sites. It provides guidance on overhead and



Temporary Power Distribution and Industrial Lighting

Get reliable temporary power distribution and construction lighting solutions for your worksite needs with our portable power boxes, panels, and LED work lights.



Temporary Power Pole Diagram and Installation Guide

Learn about the layout and components of a temporary power pole, including wiring, safety features, and installation guidelines for temporary power supply setups.



Electrical Distribution Box Diagrams , PDF , Power

This document provides a list of components in an electrical

What is Level 1, Level 2 and Level 3 distribution box

Three level distribution: That is, a distribution electric box is arranged under the general distribution box, and a switch box is arranged under the switch box, and electrical equipment is arranged under the



Wiring Diagram Of A 3 Phase Distribution Board

Understanding Wiring Diagrams of 3 Phase Distribution Boards A wiring diagram of a three-phase distribution board is an essential tool for anyone dealing with the installation and



Understanding Distribution Boxes: A Comprehensive Guide

A distribution box, also known as a power distribution box or electrical distribution box, is used to distribute electrical power safely to multiple



Three Phase Distribution Box Functions and

A three phase distribution box safely distributes and protects power for large equipment in factories, buildings, and high-demand commercial settings.

A Step-by-Step Guide to Wiring an Electrical Panel Box

Find out how to properly wire an electrical panel box with a comprehensive diagram and step-by-step instructions.



Safety requirements of distribution box

2. The low-voltage power supply system at the construction site shall be equipped with a general distribution box, a distribution box and a switch box to implement



The Essential Guide to Understanding Electrical

The electrical distribution system diagram plays a crucial role in understanding and managing power distribution within a building or facility. It provides a visual



3 phase distribution DB box wiring diagram

Three Phase Distribution DB box Connection. what is a three phase line? In electrical engineering three phase electric power systems have at least three conduc

Three-Tier Power Distribution System in a Newly Constructed

Learn about the three-tier power distribution system (main secondary tertiary distribution boards) in a new residential area including their roles connections and safety measures for 0.4kV power supply.



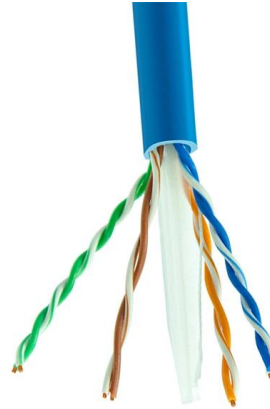
TECHNICAL SPECIFICATION FOR LT DISTRIBUTION BOX

General Technical Particulars for LT Distribution Boxes : - The L.T. Distribution Boxes should be of the dimensions as per the drawing & details in the table furnished.

Distribution Box (DB) circuit diagram.



In transmission and distribution grids, electrical currents in rated conditions can reach hundreds of amps. Under fault conditions, these currents can reach ten times or



TECHNICAL SPECIFICATION I.R.O. 63,100,160 & 315 KVA

Distribution Boxes shall have Isolator (Switch Disconnecter) on incoming circuit and Porcelain CUTOUT fuse base disconnecter on outgoing circuits with necessary interconnecting Bus Bars.

Understanding Distribution Boxes: Your Guide to Power

In the safe and effective supervision of electrical systems, distribution boxes may be the last quite unnoticed yet they are extremely fundamental part.



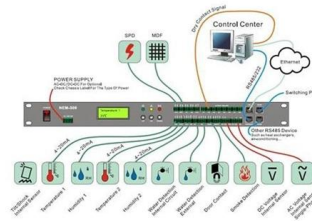
In-depth Analysis of Temporary Three-Level Distribution Box Function

This video details the design standards of this red construction site distribution box, its internal breaker configuration, and how to ensure electrical safety during construction.



Essential Rules for 3-Level Electrical Distribution

According to the hierarchical and branch circuit principle, in a three-level distribution system, no electrical equipment shall be connected by bypassing levels.

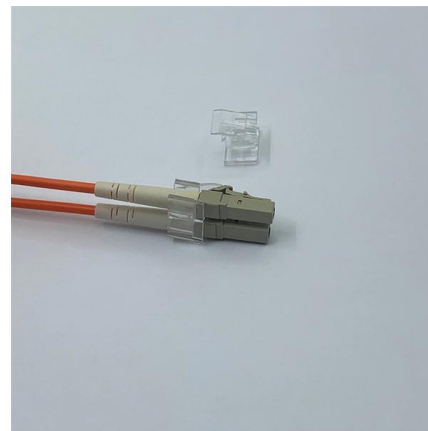


Emergency Power Distribution Equipment

The emergency system is classified as an Essential Electrical System and is described in NFPA 99 as "A system comprised of alternate sources of power and all connected distribution systems and

ELECTRICITY SUPPLY APPLICATION HANDBOOK

Distribution Network Division is responsible for the upstream network operations which involves planning, designing, constructing, operating and maintaining the system that delivers electricity



Contact Us

For datasheets, pricing, or custom high-speed optical interconnect solutions, please visit:

<https://www.syropy.com.pl>