

# Temperature around the cable tray





## Overview

---

Polyester and Vinyl Ester cable trays are non-metallic, or in a very simple sense, plastic. Many modern buildings rely on cable trays to carry a lot of power and data lines. This white paper describes the use of sensor cable systems from LISTEC GmbH for the early detection of temperature-related hazards in cable trays and supply ducts. It explains typical causes of fire, outlines technical and organisational solutions, and provides recommendations for installation. 1993 NEC Section 300-7 (b) states that "Raceways shall be provided with expansion joints where necessary to compensate for the thermal expansion or contraction.



## Temperature around the cable tray

---



### Cable Tray Ventilation and Heat Dissipation Design

Learn about effective cable tray ventilation and heat dissipation design to prevent cable overheating, extend lifespan, and ensure safety in various

### Effective weatherproofing for cable trays , Jones

Weatherproofing cable trays is critical, especially for data centres. It protects the building envelope from adverse weather conditions.



### Cable Tray Technical Guide A practical guide to product selection and

Cable Tray Technical Guide A practical guide to product selection and installation This guide for engineers and installers has been developed by ABB as a practical reference regarding cable tray

### What we commonly call power strips are frequently used around BNL

All cables and conductors approved for use in cable trays are required to be insulated. However, while the insulation of the conductors does provide some protection, it is important to use measures to



### **TEMPERATURE MONITORING OF CABLE TRAYS AND SUPPLY**

This white paper describes the use of sensor cable systems from LISTEC GmbH for the early detection of temperature-related hazards in cable trays and supply ducts.



### **Senkox Technologies Cable Tray Temperature Monitoring System**

The Senkox TDS-CT Temperature Monitoring System provides an ideal solution for the temperature monitoring of cable trays for real-time hot spot detection.



### **Ampacity of Power Cables Installed in Cable Trays**

Cable ampacity, the maximum current-carrying capacity, is a critical factor in the design and operation of power cable systems. Cables installed in trays have



## Cable tray manufacturing , High temperature material , Eaton

Select the right materials for cable tray use at high temperatures. Eaton's B-Line series offers guidelines on the proper cable management solution to specify for cable tray manufacturing.



## USING SIGNALINE LINEAR HEAT DETECTION IN CABLE TRAYS

The positioning of the Signaline Linear Heat Detector will depend on the type and layout of the cable tray or basket, but in all instances Signaline can be placed in very close proximity to the cable tray and

## Cable Tray Systems: Requirements and Best Practices

Comprehensive guide to cable tray systems requirements: tray types, materials, loading, supports, bonding, routing, and best practices for safe electrical cable management.



## Cable Tray Thermal Expansion Guidelines , PDF

1) Cable trays need expansion joints to allow for thermal contraction and expansion due to temperature changes. The NEC requires expansion joints where



## Cable Tray Spacing Standards for Installation and Safety

The Importance of Cable Tray Spacing in Electrical Infrastructure Cable tray spacing is a critical aspect of electrical infrastructure, influencing both



### USING SIGNALINE LINEAR HEAT DETECTION IN CABLE TRAYS

USING SIGNALINE LINEAR HEAT DETECTION IN CABLE TRAYS The positioning of the Signeline Linear Heat Detector will depend on the type and layout of the cable tray or basket, but in all

### Understanding Cable Tray Safety Hazards: A Detailed

Learn about common cable tray safety hazards and how to prevent risks such as cable damage, electrical short circuits, moisture intrusion, and more.



- IP65/IP55 OUTDOOR CABINET
- OUTDOOR TELECOM CABINET
- OUTDOOR ENERGY STORAGE CABINET
- 19 INCH

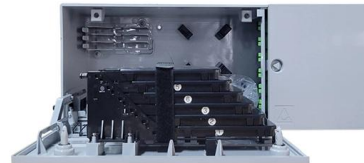
### Cable Tray Technical Guide A practical guide to product selection and

In designing supports for a cable tray system, consideration should be given to the loads associated with future cable additions and any additional loading that may be applied to the cable tray system (e.g.,



## Selecting the right materials for cable tray use at high temperatures

Selecting the right materials for cable tray use at high temperatures From the blistering heat of the Mojave Desert to the sweltering temperatures of foundries, cables need to be supported to ensure



### An Extensive Library of Self-Developed Products



### Ambient, core & installation temperature

During installation, the temperature of the cable sheathing must be carefully monitored. If it cools down too much (below 5°C), it must be warmed up again for

### Thermal behavior analysis in utility tunnels: Correlation between

The effect of cable tray spacing on the temperature distribution can be attributed to the balance between heat transfer mechanisms and convection efficiency: For relatively small tray



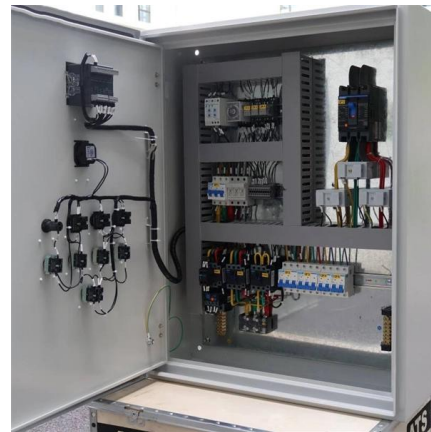
### Linear Hot Spot Detectors for Cable Tray in Power Plants

Therefore, any temperature monitoring system associated with the trays must be durable and flexible to accommodate these conditions. Senkox HSD(TM) Linear Hot



## Thermal Contraction and Expansion of Cable Tray

Thermal Contraction and Expansion of Cable Tray  
All materials expand and contract due to temperature changes. It is important that cable tray installations incorporate features which provide adequate

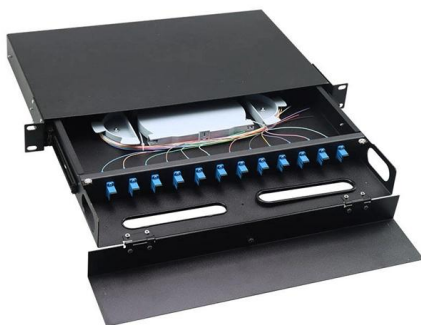


### Selecting the right materials for cable tray use at low temperatures

Selecting the right materials for cable tray use at low temperatures From the freezing cold of Antarctica to the frigid pipelines of Alaska, reliable power and communications demand properly supported

### Selecting the right materials for cable tray use at high temperatures

Aluminum, fiberglass, steel, and stainless steel are all readily available materials for cable tray manufacturing. These materials perform very well at ambient temperatures (0°F to 100°F). However,



### GUIDE CABLE TRAYS TECHNICAL

NEMA VE 1-2017 Specifies requirements for metal cable trays and associated fittings designed for use in accordance with the rules of Canadian Electrical Code, Part I and the National Electrical Code®



## Contact Us

---

For datasheets, pricing, or custom high-speed optical interconnect solutions, please visit:

<https://www.syropy.com.pl>