

# Telecom-grade pigtail loss





## Overview

---

Time Efficiency: Eliminates on-site polishing, reducing installation time by up to 70%. To be able to judge whether a fiber optic cable plant is good, one does a insertion loss test with a light source and power meter and compares that to an estimate of what is a reasonable loss for that cable plant. The estimate, called a "loss budget" is calculated using typical component losses for. In the high-stakes world of optical networking, even a minor disruption in a Pigtail Fiber connection can cascade into costly downtime, affecting data centers, telecom services, or industrial systems. This article equips engineers and network operators with actionable strategies to diagnose. Get the wrong connector type, the wrong polish, or skip proper fusion splicing technique—and you're looking at elevated signal loss, increased back reflection, and a. Insertion loss, also known as attenuation, is the loss of optical power that occurs when light passes through a fiber optic connector.



## Telecom-grade pigtail loss

---



### **Pigtail Fiber Fault Resolution: Expert Strategies for Minimizing**

Wednesday 11 June, 2025 , Pigtail Fiber Fault Resolution: Expert Strategies for Minimizing by Administrator In the high-stakes world of optical networking, even a minor disruption in a Pigtail Fiber

### **Fiber Pigtails**

CommScope engineers and manufactures a complete line of high quality fiber pigtails



### **Fiber Pigtails: The Critical Link in High-Performance Optical Networks**

These pre-terminated fiber ends, often overlooked in system designs, have become indispensable in achieving low-loss, high-reliability connections for 5G, quantum computing, and



### **DATAKOM FIBER OPTIC PIGTAILS**

Datacom pre-terminated fibre optic pigtails support fusion splice field termination applications. Datacom offers pigtails in Single Mode OS2 fibre and Mul mode OM3 and OM3 fibre types.



### **Fiber Optic Pigtail: What Is It and How to Classify It?**

Fiber optic pigtail is a fiber optic cable terminated with fiber optic connectors at only one side of the cable. They come in different types based on



### **Explained: Pigtail For Telecom Standards, Composition, and Industrial**

A telecom pigtail is a specialized fiber-optic cable featuring a factory-terminated connector on one end and a bare, unterminated fiber on the other. Unlike standard patch cables, pigtails are designed



### **Insertion Loss in Telecommunications Cabling**

Discover the causes of insertion loss in telecommunications cabling, including coaxial, twisted-pair Ethernet, and optical fiber





## Insertion Loss: Impact on Signal Quality & Performance

Learn what insertion loss is, how it affects signal quality and performance, and why minimizing insertion loss is critical for reliable network

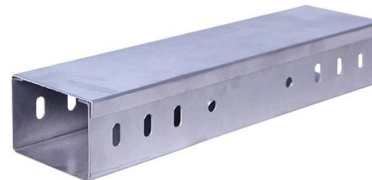


## Considerations for Optical Fiber Termination

The quality of optical fiber link terminations directly affects channel insertion loss. Poor quality terminations cause an increase in loss while high-performance terminations produce less loss.

## Fiber Optic Pigtails for Telecom & Data Center

Polish grades (choices) and connector options (e.g. LC, SC, FC, ST - the most common connector types in telecom, datacom, and CATV) affect



## Low Loss Cables & Pigtails

Low-loss cables and pigtails are designed for efficient RF signal transmission with minimal attenuation. They provide reliable performance, reduced signal loss, and consistent impedance for wireless,



## Understanding Telecom-Grade Multimode Pigtails: Essential

In addition to their physical characteristics, telecom-grade multimode pigtails undergo rigorous testing to ensure they meet industry standards. This includes tests for insertion loss, return loss, and overall



## Insertion Loss vs Return Loss: Performance Parameters

Insertion loss and return loss are two of the most critical performance parameters for twisted pair copper and fiber optic cabling links. They represent

## Fiber Optic Pigtails: Uses & Differences from Patch Cords

Understand fiber optic pigtails -- definition, types, and how they differ from patch cords. Learn why pigtails ensure reliable, low-loss fiber terminations.



## ABSTRACT

In comparing two methods of fast termination, fusion-spliced pigtails and pre-polished connectors, two obvious advantages are for the pigtail. One of these advantages is lower insertion loss.

## SC/LC/FC/ST Multimode OM1-62.5um 12



### Colors 0.9mm Tight

Conductor Type Stranded Model Number SC/FC/LC/ST-UPC-OM1-0.9MM-12C Place of Origin Guangdong, China Application Telecom Communication Product name Multimode fiber optic patch



### A Guide to Understand Fiber Pigtail in 2024

Welcome to our comprehensive guide on fiber pigtails - the crucial components that play a significant role in modern telecommunications and

### Microcoaxial "Pigtails" for RF Measurements to and Beyond 5GHz

Microcoaxial "pigtails" are an invaluable tool for anyone trying to diagnose or repair RF signal path issues. If applied carefully, they can be used to characterize networks up to and beyond



### Fiber Optic Pigtail: The Complete Guide to Types, Splicing Methods

Executive Summary: A fiber optic pigtail is one of the most commonly specified yet least understood components in structured cabling. Get the wrong connector type, the wrong polish, or





## Reference to Insertion Loss and Return Loss for Fiber

In this comprehensive guide, we will discuss these two parameters, their significance in fiber optic connectors, and the recommended reference values for



## Pigtail Fiber Fault Resolution: Expert Strategies for Minimizing

This article equips engineers and network operators with actionable strategies to diagnose, resolve, and prevent Pigtail Fiber failures, ensuring uninterrupted performance in mission-critical environments.

## Understanding Telecom-Grade Multimode Pigtails: Essential

The construction of telecom-grade multimode pigtails typically involves high-quality materials and precise engineering. These pigtails are often made from glass fibers that possess excellent light



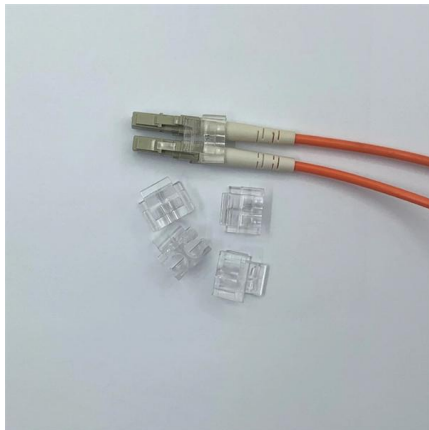
## What is a Fiber Optic Pigtail? , Types, Uses & Advantages

Learn what a fiber optic pigtail is, how it differs from patch cords, and why it's essential for efficient fiber termination in telecom and FTTH systems.



## Achieving Ultra Low Insertion Loss with Jingkon Telecom Grade Fiber

Jingkon Fiber Communication 's telecom-grade fiber optic connectors combine precision engineering, controlled manufacturing, and optimized integration to deliver consistently low IL and

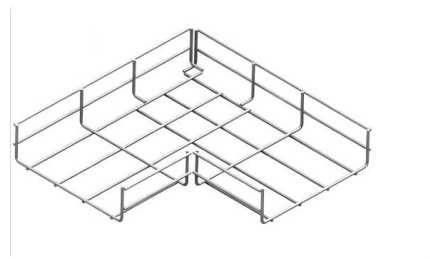


## What Is a Fiber Optic Pigtail? Full Guide to Pigtail Fiber

Comprehensive guide to fiber optic pigtails: Explore types, pigtail connectors, fiber counts, and applications for FTTH, data centers, industrial

## What Is a Pigtail Connector: Types, Uses & Guide

Learn what a pigtail connector is, its types, uses, and benefits. Explore industries, installation tips, and how to choose the right solution.



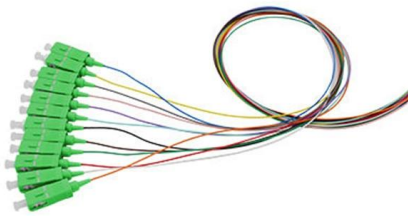
## Pigtail Fiber: Essential Component in Modern Fiber Optic Connectivity

This design simplifies field installations, reduces signal loss, and ensures consistent performance in high-density environments like data centers or FTTH (Fiber-to-the-Home) networks.



## Fiber Optic Pigtail: The Backbone of Your Network

These adaptors provide a reliable, low-loss bridge between different connector interfaces, adding flexibility to network design and maintenance.



## Signal Loss: A Guide to Causes and Mitigation

Explore the complexities of signal loss in telecommunications: causes, impact, and management in fiber-optic and wireless networks.

## Contact Us

---

For datasheets, pricing, or custom high-speed optical interconnect solutions, please visit:  
<https://www.syropy.com.pl>