

Technical Challenges in Installing Distribution Boxes





Overview

Use UL/CE-certified parts and record installation details for future inspections. Choose the right box based on environment (indoor/outdoor), load capacity, and durability. Outdoor low-voltage power distribution boxes (hereinafter referred to as "distribution boxes") are low-voltage distribution equipment used in 380/220V power supply systems to receive and distribute electrical energy. Honestly, with so many options out there, figuring out what's best can feel pretty overwhelming. Strictly speaking, the word "Distribution Box (D-box)" can refer to two categories: electrical distribution boxes and septic tank distribution boxes.



Technical Challenges in Installing Distribution Boxes



Five mistakes when installing temporary distribution boxes and how to

Temporary distribution boxes are indispensable at construction sites, events and temporary workplaces. Yet things often go wrong when installing or renting these installations,

Possible problems with the distribution box and weak box installation

In front of us, we introduced the precautions for installing the distribution box and how to properly mount it. Today, weâEUR(TM)ll go over some common issues that may arise during the



Problems and Precautions in the Operation of Distribution Boxes

Outdoor low-voltage power distribution boxes (hereinafter referred to as "distribution boxes") are low-voltage distribution equipment used in 380/220V power supply systems to receive and distribute

Cautions and Requirements for Installation of

When the distribution box is installed and constructed, some safety operation items have become the primary premise of the work. Therefore, there are certain



Challenges in Choosing the Right Distribution Box for Your Industrial

This chart illustrates the common challenges faced in selecting distribution boxes for industrial applications, along with the effectiveness of maintenance practices.



Analysis on the Installation of Assembled Distribution

Analysis on the Installation of Assembled Distribution Cabinets and Distribution Boxes in Electrical Engineering. Systematically learning this



Comprehensive Guide to the Best Distribution Board Box: Technical

You know, in today's fast-changing electrical industry, it's hard to overstate just how important a reliable Distribution Board Box really is. These boxes are like the brain of electrical





Electric Panel Installation Method Statement

This document provides a method statement for installing and terminating electric panels and distribution boxes. It outlines 4 steps: 1) Pre-installation preparation



Installation problems and solutions of distribution box

The distribution box has the characteristics of small size, simple installation, special technical performance, fixed location, unique configuration function, not limited by the site, relatively common

News

The installation of power distribution cabinets and boxes in data rooms is crucial for ensuring efficient and reliable power distribution. However, this process requires careful attention to detail to guarantee



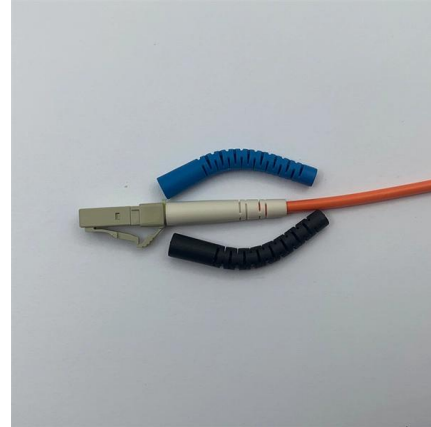
How to Install a Cable Distribution Box Safely and

This article provides a detailed overview of the entire process of installing a distribution box, from pre-installation preparation to post-installation



1. An Ultimate Guide for Metal Distribution Boxes

1) Metal Distribution Boxes Constructed from steel, aluminum, or cast iron, metal distribution boxes are highly durable and resistant to mechanical damage. Ideal

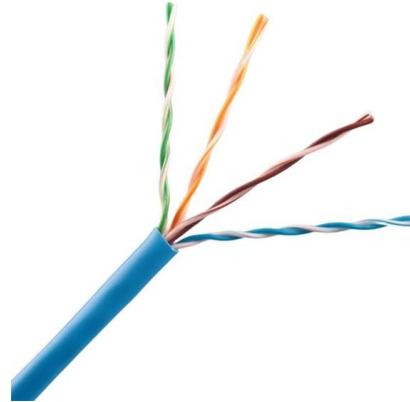


Requirements And Specifications For Installation Of

The installation requirements and specifications of Distribution box involve many aspects, including site selection, fixing method, wiring specifications

Distribution box

In this article, you will learn everything you need to know about installing, expanding or replacing a distribution box - from the legal basis to practical implementation.



The Importance of Distribution Boxes in Electrical Systems

Learn more about how distribution boxes play a critical role in the safe and efficient operation of electrical systems.



Understanding Distribution Boxes:A Comprehensive Guide

A distribution boxes is an essential device that manages the safe and efficient flow of electrical power throughout different areas of a building or facility.

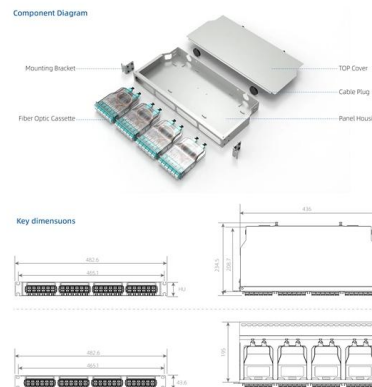


What are the common problems of distribution boxes?

The main problems encountered with distribution boxes include installation and layout problems, electrical connection and grounding problems,

What is a Distribution Box? - A Comprehensive Guide

This challenge led to the invention of the distribution box, a game-changer in electrical systems. So, what is a distribution box? It organizes and



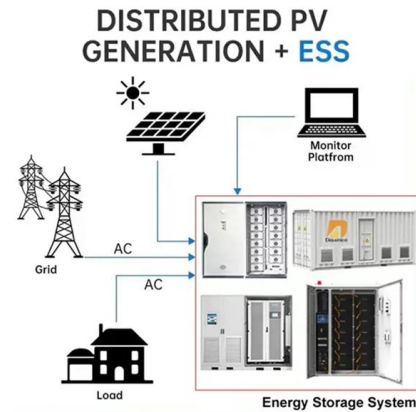
Problems and Precautions in the Operation of Distribution Boxes

Outdoor low-voltage distribution boxes: essential equipment facing operational challenges like overheating & lightning damage. Learn practical solutions for improved reliability and safety.



Understanding Distribution Boxes: Your Guide to Power

Weatherproof Distribution Boxes These serve specific outdoor purposes, with rain, dust, and extreme temperatures sealed shut, protecting any



Size determination, installation method and wiring mode

The distribution box is the central hub of the home circuit and the general control of our daily power consumption. It is an indispensable electrical equipment. If there

Key Points Of Installation And Collocation Of Distribution Box In

The inlets and outlets of the mobile distribution box and switch box shall not be connected with pins Rubber insulated cable must be used for the mouth line and exit line. 8. The distribution box and



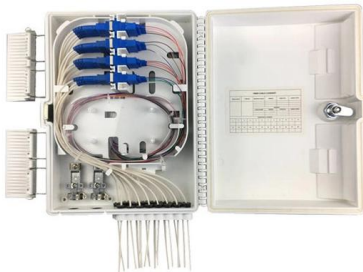
How to Install a Distribution Box--A Comprehensive

Residential distribution boxes usually have a smaller size and lower weight, while industrial distribution boxes are specially designed for high power



Cautions and Requirements for Installation of

8. After installation, the residue in the distribution box should be cleaned up. When the distribution box is installed and constructed, some safety operation items



Quality Control for Installation and Construction of Electrical Riser

Master the key quality control methods for electrical riser & distribution box installation. Ensure safety, compliance, and prevent hazards in building electrical systems.

PyImageSearch

Follow these tutorials to get OpenCV installed on your system, learn the fundamentals of Computer Vision, and graduate to more advanced topics,



MPO-MPO Low Smoke Halogen Free Sheath
Multimode 10 Gigabit 24 pole OM3
Insertion loss <0.35dB Return loss >50dB

Contact Us

For datasheets, pricing, or custom high-speed optical interconnect solutions, please visit:
<https://www.syropy.com.pl>