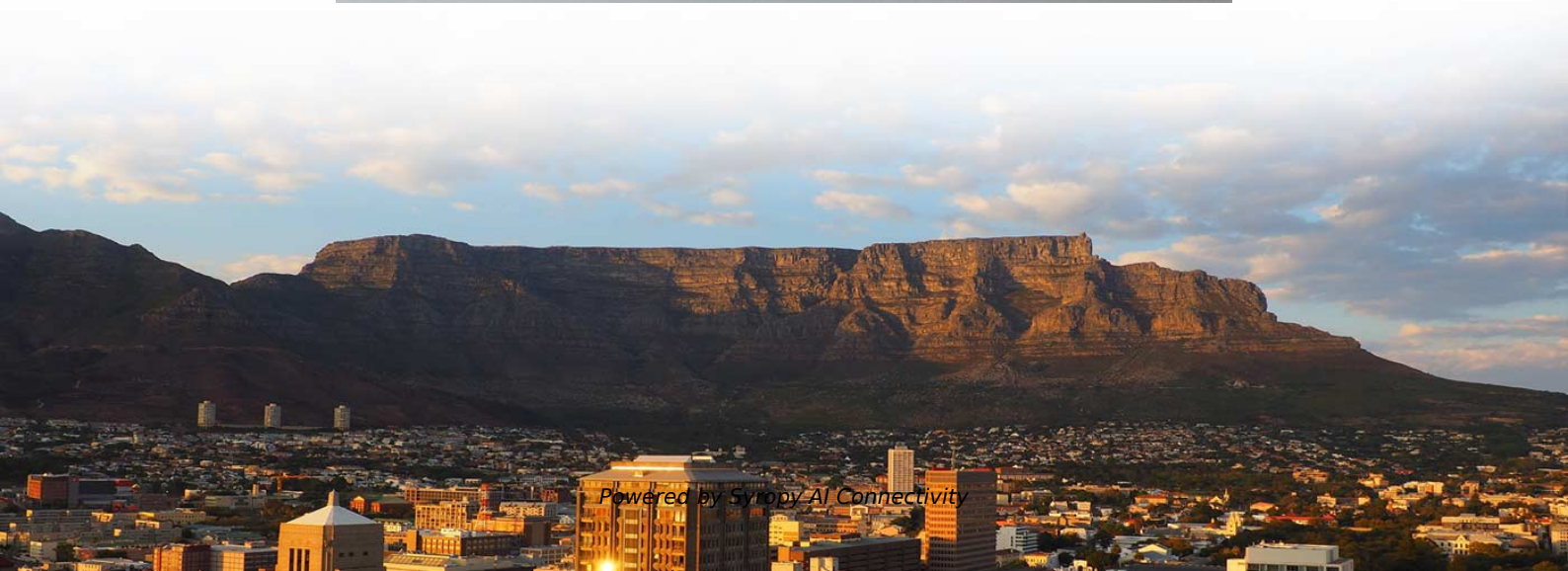


# **Tanzania Central Loose Tube Optical Cable**





## Tanzania Central Loose Tube Optical Cable



### 3106-11002FXXCL

1500 N 1000 N/100 mm -20°C to +60°C Outer Jacket E-Glass Strength Loose Tube Jelly Compound Optical Fibre

### Fire-Resistant Fibre Optic Cable Central Loose Tube

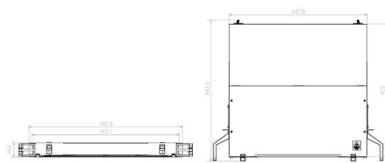
In critical environments like tunnels, metros, and airports, communication links must survive extreme heat. DConnect's Fire Resistant Fibre Optic Cable solution features IEC 60331-25 certified fire



Component Diagram



Key dimensions



### Fibre Cable 4 Core Loose Tube Multimode 50/125 OM4

The design of the Fibre OM4 cables includes a gel-filled, non-dripping, silicon-free tube that contains up to 24 color-coded 250µm primary coated fibres. An E-Glass

### Central Loose Tube Fiber Cable

Belden's Central Loose Tube Fiber Cables support indoor/outdoor use--including conduit, direct burial, aerial and trunking. Built with 250 µm fibers (2-24 count),



**Fiber Optic Cables, SFP, SFP Plus, XFP, Xenpak, X2, SFP+ Modules, Optical**

FTTH Cables FTTH indoor cables, FTTH drop cables, FTTH duct cables, Non-metal Strength member Central Loose Tube FTTH Outdoor Cables, we make a wide range of the FTTH cables for both



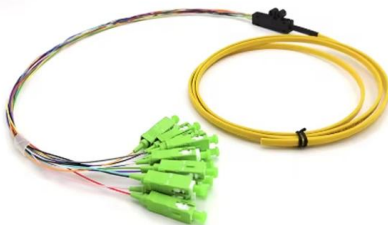
**Multi Loose Tube Cables**

Featuring multiple loose tubes stranded around a central strength member with effective water-blocking protection, these cables offer excellent mechanical strength and environmental resistance.



**Fiber Optic Cables in Tanzania for sale  
Prices on Jiji .tz**

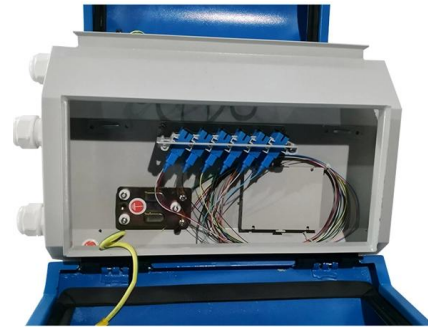
EVI-GJPFJH-12B1 12-core fiber optic cable, G652D single mode. Loose Tube, Gel Filled, outdoor





## DRAFT TANZANIA STANDARD

Where the cable crosses the roads, ducting shall be of PVC pipes class 'D' buried at a minimum depth of 150 cm for protection from vehicular and pedestrian traffic stresses.



### Central Loose Tube Fiber Cable

CPR B2ca. Universal (Indoor/Outdoor) optical fiber Central Loose Tube (jelly filled tube) cable with glass yarns as strength member, Low Smoke Zero Halogen inner jacket, Corrugated Steel Tape (Full



### Central Loose Tube Fiber Optic Cables

Central loose tube fiber optic cable contains one tube with 2 - 24 fibers, which is filled with water blocking gel. Either aramid yarn or fiber glass is wound around the



### Central Loose Tube Fiber Cable

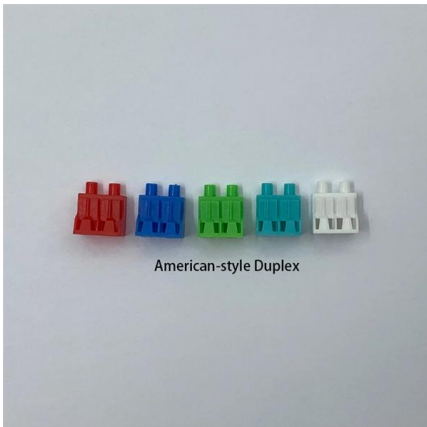
Universal (Indoor/Outdoor) optical fiber Central Loose Tube (jelly filled tube) cable with aramid yarns as flexible non-metallic strength member, Corrugated Steel Tape armor and flame retardant LSZH





## Fiber Optic Cables Suppliers Exporting to Tanzania

Find Economical Suppliers of Fiber Optic Cables: 131 Manufacturers Exporting to Tanzania based on Export data till Feb-26: Pricing, Qty, Buyers & Contacts.



### EVI Fiber Optic Cable

Single Mode, G652D Optical Fiber Cable. Loose tube construction, tubes jelly filled, elements (tubes and filler rods) laid up around non-metallic central strength

### Fiber Optic Cables, SFP, SFP Plus, XFP, Xenpak, X2, SFP

These cables replaces the commonly used copper wires of the local Telco as it can carry high-speed broadband services integrating voice, data and video, and runs directly to the junction box at the



### Basic but Important Information about Loose Tube Fiber

Loose tube fiber optic cables are ideal for outdoor environments where extreme environmental conditions play a major role in cable selection. Here are



### **E-Glass Strength Central Loose Tube Gel Free Armoured In/Out Optical Cable**

E-Glass Strength Central Loose Tube Gel Free Armoured In/Out Optical Cable This cable is constructed with Central Loose Tube and E-glass gives better tensile strength and protection. High Mechanical



### **Fire Resistant Central Loose Tube Optical Fiber Cables**

These optical fiber cables are designed to data transmission in ship and specially in cruise ship where low smoke, halogen free and fire resistant cables are required

### **Central Loose Tube Cables**

Central Loose Tube Ribbon Fiber Optic Cables can provide excellent transmission performance and protection of fibers in a variety of field environments.



### **Central Loose Tube Fiber Optic Cables: Empowering**

Central Loose Tube Fiber Optic Cables are a type of optical cable designed to transmit data over long distances with exceptional speed and



## Fire Resistant Central Loose Tube Fiber Optic Cable

These Fire resistant Central Loose Tube Fiber Optic cables are characterized by light weight and small diameter, suitable for both aerial and duct installation. They are

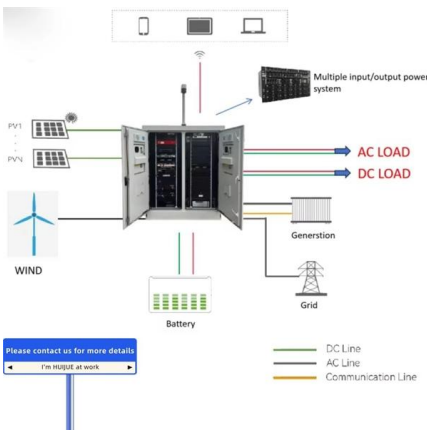
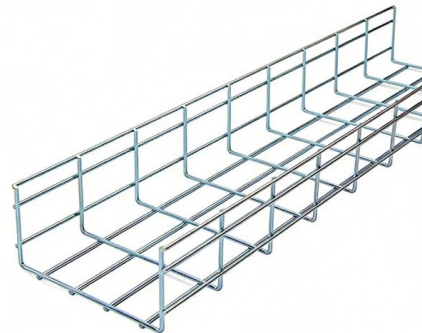


### Understanding the difference between Central Core

Loose tube cables have their own benefits and drawbacks. Unlike central core ribbon cables, midspan access is easy, since a splicing technician

### Optical fibres are protected by cable constructions

Also the installation characteristics of optical fibres are under continuous development. A result of such development are cables with very flexible loose tubes. Learn more about our range of fibre optic



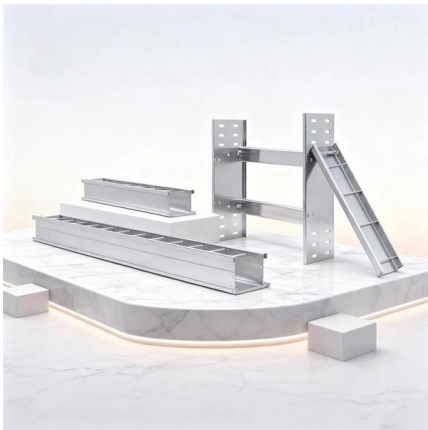
### Aerial Central Loose Tube Fiber Optic Cables , ETK Kablo

Standards Compliance and Application Areas All ETK Kablo Central Loose Tube Fiber Optic Cables are designed and tested according to IEC 60794, ITU-T, and EN 50173 standards. This ensures global



## CENTRAL LOOSE TUBE E-GLASS FRP STRENGTH OPTICAL CABLE

CENTRAL LOOSE TUBE E-GLASS FRP STRENGTH OPTICAL CABLE Non metallic FRP strength members in the cable give it good tensile strength and electro- magnetic protection. E-Glass gives

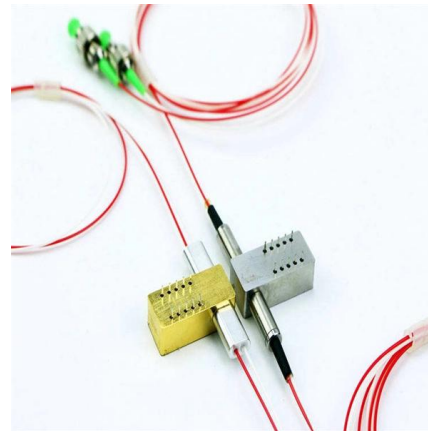


## Loose Tube , Prysmian

Dielectric armoured cables with double sheath are very suitable for direct buried or duct installation and for areas with high risk of rodent presence.

## Central Loose Tube Ribbon Fiber Cable

Description Central loose tube cable contains one tube with 12 fiber ribbons, which is filled with water blocking gel. The fiber ribbon can be easily separated by hand



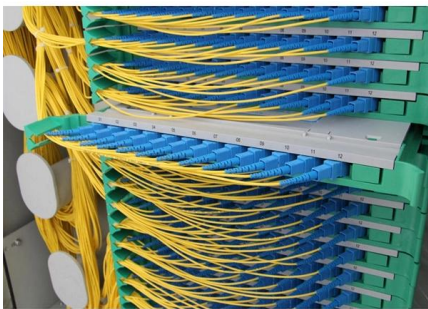
## FTTH Cable

FTTH Cables FTTH indoor cables, FTTH drop cables, FTTH duct cables, Non-metal Strength member Central Loose Tube FTTH Outdoor Cables, we make a wide range of the FTTH cables for both



**RaddyFiber Manufacturing Tanzania LTD**

Our unwavering commitment revolves around the production of premium-quality fiber optic cables and associated accessories. Our extensive expertise spans across diverse sectors, including industrial,



**CentraLink CD and Central Loose Tube**

1.0 Product Applications The instructions in this document explain how to prepare end and mid-span openings of the Prysmian central loose tube fiber optic cable designs for termination. The document

**Contact Us**

For datasheets, pricing, or custom high-speed optical interconnect solutions, please visit:  
<https://www.syropy.com.pl>