

TP-Link optical module SC port





Overview

TL-MC101 is a media converter designed to convert 1000BASE-LX fiber to 1000Base-T copper media or vice versa. 3z 1000Base-LX standards, TL-MC101 is designed for use with single-mode fiber cable utilizing the SC-Type connector. It integrates bidirectional data transmission over one single-mode optical fibre.



TP-Link optical module SC port



MC200CM , Gigabit Multi-Mode Media Converter

Other features of this module include the ability to be used as a stand alone device (no chassis required) or with TP-LINK's 19" system chassis, Auto MDI/MDI-X for

Common Questions About SFP Module and Media

To the best of our knowledge, TP-Link SFP modules are compatible with our optical products. The Q& A about the compatibility of the TP-Link SFP



TP-Link MC210CS fiber optics media converter SC/UPC Duplex SM

Designed under IEEE802.3ab 1000Base-T and IEEE802.3z 1000Base-LX standards, the MC210CS is designed for use with single-mode fiber cable utilizing the SC-Type connector.

Simple and Reliable Way to Overcome the Distance Limitations

100 Mbps Media Converters Benefit Flexible Surveillance TP-Link Fast Ethernet Media Converters are designed to address the needs of flexible long-range surveillance deployment with



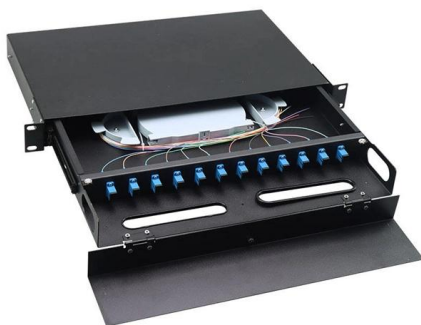
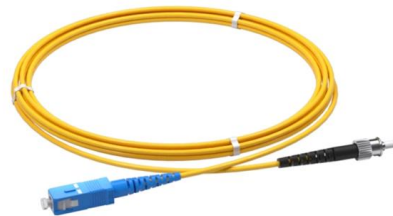
TL-MC101 , Gigabit Single-Mode Media Converter , TP-Link

TL-MC101 is a media converter designed to convert 1000BASE-LX fiber to 1000Base-T copper media or vice versa. Designed under IEEE802.3ab



TP-LINK Compatible GPON ONU Stick with MAC and

TP-LINK Compatible GPON ONU Stick with MAC and Web Interface SFP SFP 1310nm-TX/1490nm-RX 1.244G-TX/2.488G-RX Class B+ 20km DOM Simplex



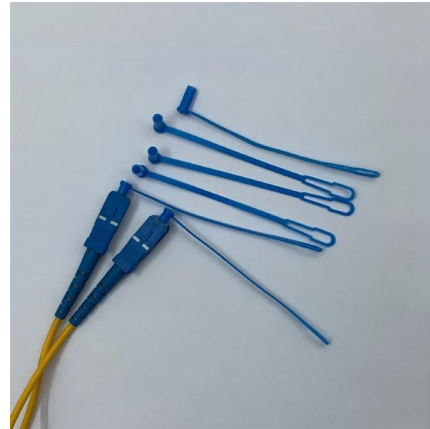
MC210CS , Omada Gigabit Single-Mode Media

Designed under IEEE802.3ab 1000Base-T and IEEE802.3z 1000Base-LX standards, the MC210CS is designed for use with single-mode fiber cable utilizing the SC



SFP und SFP+: Alles, was Sie über optische Module

Lernen Sie die wichtigsten Unterschiede zwischen SFP- und SFP+-Modulen und deren Anwendungen kennen.



Welche SFP Module brauche ich , Serverschrank24

Dieser Steckertyp verbindet über den SFP Port Ihren Switch mit dem Glasfasernetzwerk (Fiber optic), denn er wandelt das elektrische Signal eines Netzwerkes in ein optisches Signal



TL-MC101 , Gigabit Single-Mode Media Converter , TP-Link

Other features of this module include the ability to be used as a stand alone device (no chassis required) or with TP-Link's MC1400 chassis, Auto MDI/MDI-X for TX



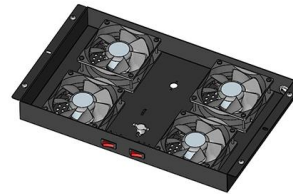
TP-LINK Compatible GPON OLT Stick with MAC SFP 1490nm

TP-LINK Compatible GPON OLT Stick with MAC SFP 1490nm-TX/1310nm-RX 2.488G-TX/1.244G-RX Class C+ 20km DOM Simple SC/UPC SMF Optical Transceiver Module (Industrial) The GPON-SFP



Deco SFP+ Ports User Reference Guide

Fiber ISP optic distribution box---Fiber gateway---main Deco BE85 (Fiber SFP Module)
----- (Fiber SFP Module) Deco BE85



Module Switch 1Pair SC 3/5/20KM GBIC 1.25G SFP /

TP Link TL SF1008P 8 Port 10 100Mbps Desktop Switch with 4 Port PoE. switch hub 8 port gigabit 1000mbps. 48 port gigabit switch managed. dell optiplex 990 power

Media Converters & SFP Module Flyer_Online Version

TP-Link Fast Ethernet Media Converters are designed to address the needs of flexible long-range surveillance deployment with optical fibers. It provides an economical path towards



TL-MC102 , Gigabit Multi-Mode Media Converter , TP-Link

The TL-MC102 is a media converter designed to convert 1000BASE-SX fiber to 1000Base-T copper media or vice versa. Designed under IEEE802.3ab

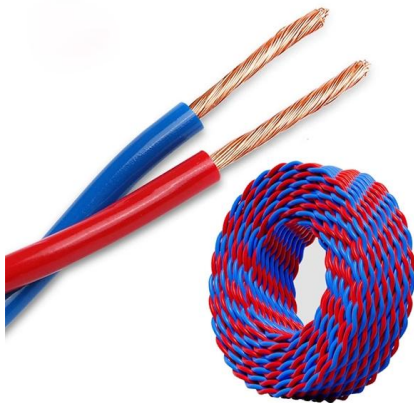
Everything You Need to Know About Fiber

Discover everything about SC fiber optic connectors, essential for linking multimode and singlemode fiber optic cables in telecom and data

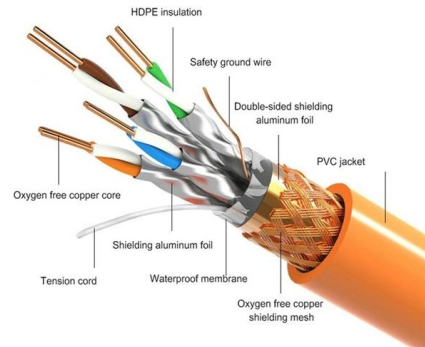


TP-LINK MC210CS GIGABIT SINGLE-MODE SC

TP-Link MC210CS Gigabit Single-Mode SC Fibre Media Converter 110/100/1000Mbps Auto-Negotiation RJ45 port supporting Auto-MDI/MDIX Auto



PRODUCT DETAILS



Media Converters & SFP Module Flyer_Online Version

TP-Link offers a variety of fiber modules to suit your fiber connectivity applications. Multi-mode and single-mode modules with 1000Base SFP or 10GBase SFP+ ports are available, ideal for



TP-LINK Compatible GPON ONU Stick with MAC and

It integrates bidirectional data transmission over one single-mode optical fibre. The GPON ONU Stick module provides an asymmetric 1.244 Gbps upstream and



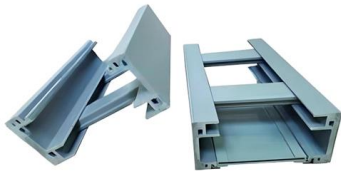
OMADA MEDIA CONVERTER MULTI-MODE SC FIBER CONVERTER

Other features of this module include the ability to be used as a stand alone device (no chassis required) or with TP-LINK's 19" system chassis, Auto MDI/MDI-X for TX port, and front panel status LEDs.



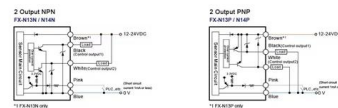
SFP Module TP-LINK TL-SM311LS (1000Base-SX, SMF 10km, 2xLC)

This optical module is compliant with SFP (Small Form-factor Pluggable / Mini GBIC) standard. It is an optional piece of equipment for TP-LINK managed/web smart switches, for



TP-LINK Compatible GPON OLT Stick with MAC SFP 1490nm

It integrates bidirectional data transmission over one single-mode optical fibre. The GPON OLT Stick with MAC module provides an asymmetric 1.244 Gbps upstream and 2.488 Gbps downstream rate



TP Link Singlemode SC Gigabit Media Converter

The MC210CS is a media converter designed to convert 1000BASE-LX/LH fiber to 1000Base-T copper media or vice versa. Designed under IEEE802.3ab 1000Base-T and IEEE802.3z 1000Base-LX/LH



Hier sollte eine Beschreibung angezeigt werden, diese Seite lässt dies jedoch nicht zu.



TL-SM331T , 1000BASE-T RJ45 SFP Module , TP-Link

Ensured Compatibility TL-SM331T is compatible with various optic fiber equipment from different vendors, such as TP-Link, Cisco, Huawei, Ubiquiti, D-link, Netgear



Length:44mm
Small-end inner diameter:3.0mm
Large-end inner diameter:5.5mm

TP-Link Aginet GPON OLT SFP Optical Module

The TP-Link Aginet PLT12-C+ is a high performance GPON OLT SFP transceiver module, which is designed for PON (Passive Optical Network) application. TP



MC230L , Gigabit SFP to SFP Fiber Converter , TP-Link

MC230L offers flexible installation on standalone desktops or inserted into a chassis (TP-Link TL-FC1420). The easy-to-view front panel



TP-LINK MC110CS , 10/100MBPS SINGLE-MODE SC

Designed under IEEE 802.3u 10/100Base-TX and 100Base-FX standards, the MC110CS is designed for use with single-mode fibre cable utilizing the SC-Type



TP-Link Gigabit SFP to RJ45 Fiber Media Converter

Other features of this module include the ability to be used as a stand alone device (no chassis required) or with TP-LINK's 19" system chassis, Auto MDI/MDI-X for

MC210CS , Omada Gigabit Single-Mode Media

Other features of this module include the ability to be used as a stand alone device (no chassis required) or with MC1400 chassis, Auto MDI/MDI-X for TX port, and



Contact Us

For datasheets, pricing, or custom high-speed optical interconnect solutions, please visit:
<https://www.syropy.com.pl>