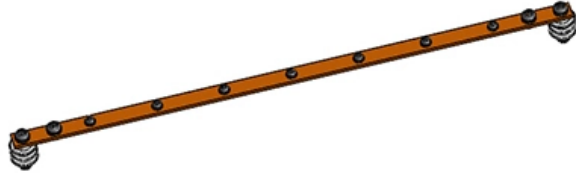


TP Core Switch Configuration





Overview

Whether you're setting it up for a home lab, office, or enterprise use, this guide walks you through everything from the initial setup to VLAN configuration, port settings, and security features. You can access and manage the switch using the GUI (Graphical User Interface, also called web interface in this text) or using the CLI (Command Line Interface). Title: TP-Link TL-SG2218 Switch Configuration | Step-by-Step Setup Guide Description: In this video, I'll show you how to configure the TP-Link TL-SG2218, a powerful Gigabit smart managed switch designed for small to medium-sized networks.

2 How Do I Decide the Link Type of a Port When Configuring VLANs?

T2500/T2500G/T2600G/T2700G/T3700G/T3710G series switches support three link types: Access, Trunk, and General (equal to the type Hybrid in some non-TP-Link devices). To complete IPv4 interface configuration, follow these steps: 1) Create a Layer 3 interface 2) Configure IPv4 parameters of the created interface 3) View detailed information of the created interface To complete IPv6 interface configuration, follow these steps: 1) Create a Layer 3 interface 2).



TP Core Switch Configuration



configuring_layer3_interface

To make it possible for these host to access the internet, we need to configure a VLAN interface on the switch for each VLAN. The VLAN interface can be

accessing-the-switch

The switch's configuration files fall into two types: the running configuration file and the start-up configuration file. After you perform configurations on the sub



Solved: Core Switch

Dears This is my first time to configure core switch on packet tracer and still confusing in core switch how to interconnect all the core switch? and I can't put any IP ADDRESS for each port

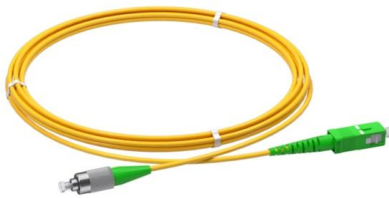
Introduction to Core Switch Configuration

A switch that functions as part of a router and operates at the third layer of the OSI network standard model, the network layer. The most important purpose of the layer 3 switch is to speed up the data



Core Configuration of a Router and a Switch in Cisco Packet Tracer

Berg IT Training - In this CCST and CCNA introductory-level video, I perform a line-by-line core configuration of a Cisco router and a Cisco switch using the command line interface (CLI) in Cisco



COM02_Cisco_R01_9

The Core switch will distribute the Ips to all of the other switches. Remember to configure each Cisco switch you will need console cable, connect your console cable and open your tera-term application



PRODUCT CATEGORY				
Open rack Series	2U Open rack	4U Open rack	6U Open rack	Adjustable Depth Open rack
Wall mount rack Series	Glass door Wall mount rack	Mesh door Wall mount rack	Double section Wall mount rack	Economic type Wall mount rack
Floor standing server rack	Glass door with casters	Mesh door with casters	4U Standard Server rack	Double open door Server rack
Outdoor cabinet	air conditioner Outdoor cabinet	Outdoor cabinet with plinth	Outdoor cabinet with fan cooling	Double Wall Outdoor cabinet
Splitter series	Bare Fiber Splitters	Blackless Fiber Splitters	ABS Splitters	Plastic Splitters
Splitter series	LOK Splitters	Rack Mount Splitters	Mini Plug-in Type Splitter	Tray Splitters
Patch cord series	LC-LC	SC-SC	FC-FC	LC-LC
FTTH product series				

Installation Guide

Console Port Designed to connect with the serial port of a computer or terminal for monitoring and configuring the Switch.



IT news, guides and background information

News and forums on computers, IT, science, media and politics. Price comparison of hardware and software as well as downloads at Heise Medien.

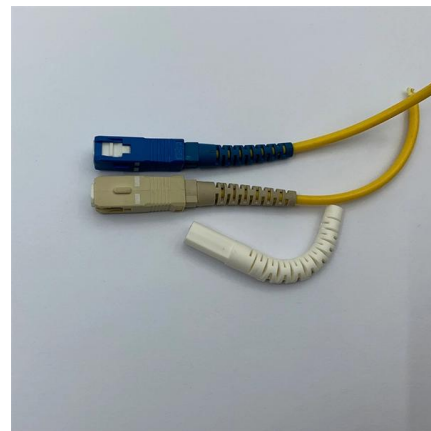


SME Network Solution Typical Configuration Examples

"Gateway + Core Switch + Aggregation Switch + Access Switch + WAC + AP" Networking: Local Entire Network Deployment (EasyWeb) "Gateway + Core Switch + Aggregation Switch + Access Switch +

q_a_ethernet_switching

For TP-Link switches, the default system MTU are 1518 bytes. You can configure the switches to support frames larger than 1518 bytes by using the jumbo command



Typical CLI Configuration Examples for TP-Link

The switch supports configuring IGMP Snooping on a per-VLAN basis. After IGMP Snooping is enabled globally, you also need to enable IGMP



Accessing the Switch

After you perform configurations on the sub-interfaces and click Apply, the modifications will be saved in the running configuration file. The configurations will be lost when the switch reboots. If you need to



accessing-the-switch

You can access TP-Link JetStream switches using the GUI or CLI. Follow the steps to log in and manage your switch.



TP-Link Switch Configuration : r/networking

Hi Everyone, I am currently working with a TP-Link switch configuration that has been set up by my senior, there's a specific aspect that I'm struggling to understand. I would be grateful for any



Configuration

Most settings are configured using the first two methods. This guide, therefore, focuses on them. Configuration File (s) Introduction While some settings in RabbitMQ can be tuned using environment





TP-LINK TL-SG2424P USER MANUAL Pdf Download , ManualsLib

Here mainly introduces: System Info: Configure the description, system time and network parameters of the switch. User Management: Configure the user name and password

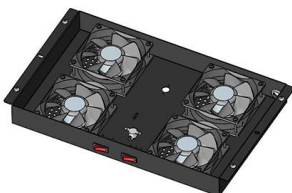
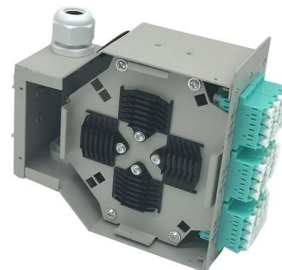


ITPro Today, Network Computing, IoT World Today combine

ITPro Today, Network Computing and IoT World Today have combined with TechTarget . The page you are looking for may no longer exist.

How to configure the default gateway of the smart and L2 managed

On the Managed Switch, we cannot directly set the default gateway as we do on the PC or Smart switches. But we can manually configure a default route for the switch, and the effects are



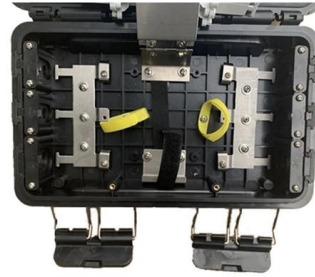
Configuration Guide

With the protocol VLAN rule configured on the basis of the existing 802.1Q VLAN, the switch can analyze special fields of received packets, encapsulate the packets in specific formats, and forward



TP LINK TL SG2218 SWITCH CONFIGURATION. tplink Switch.

Whether you're setting it up for a home lab, office, or enterprise use, this guide walks you through everything from the initial setup to VLAN configuration, port settings, and security features

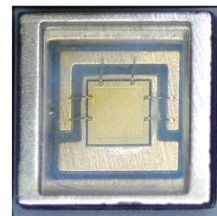


CLI Reference Guide

Provide information about the commands used for configuring the System information and System IP, reboot and reset the switch, upgrade the switch system and commands used for cable test.

TP-LINK Managed PoE Switch , CLI

Designed to provide network administrators with advanced control and management capabilities, the T2600G-28MPS is a feature-rich managed PoE switch from TP-LINK.



Typical CLI Configuration Examples for TP-Link

You can also configure IP interfaces for other VLANs, and the switch will implement the routing function between different VLANs. This chapter will



Configuring the Core Switch

Configuring the Core Switch Context In this scenario, IP addresses of the interfaces connecting the core switch to the BRASs and firewalls and OSPF need to be configured on the core



how to configure cisco core switch HSRP active active

In this video we will learn how to configure cisco core switch active active using HSRP step by step. In this LAB we practice on creating vlan, distribute vl

Creating a Base Configuration for a Cisco IOS Switch: A Step-by-Step

Learn how to set up a base configuration for network switches. Secure, optimize, and enable remote access with our step-by-step guide.



How to Configure a Cisco Switch (step by step)

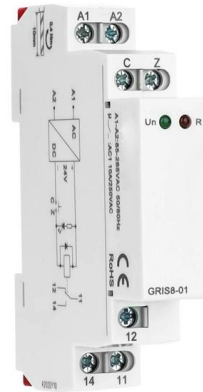
If you're looking to configure a switch for the first time, this post is for you. Learn step-by-step configuration commands for Cisco IOS Switches.





configuring_layer3_interface

```
Switch#configure Switch (config)#interface vlan 2 Switch (config-if)#description VLAN-2 Switch (config-if)#end Switch#copy running-config startup-config 2.2.2
```



Ethernet Switching

For TP-Link switches, the default system MTU are 1518 bytes. You can configure the switches to support frames larger than 1518 bytes by using the jumbo command in interface configuration mode.

TP-LINK SWITCH VLAN CONFIGURATIONS , HOW TO MAKE NEW VLAN IN TP

TP-LINK SWITCH VLAN CONFIGURATIONS , HOW TO MAKE NEW VLAN IN TP-LINK SWITCH , TP-LINK SWITCH SETUP Zani Texh 4.82K subscribers Subscribed



Contact Us

For datasheets, pricing, or custom high-speed optical interconnect solutions, please visit:
<https://www.syropy.com.pl>