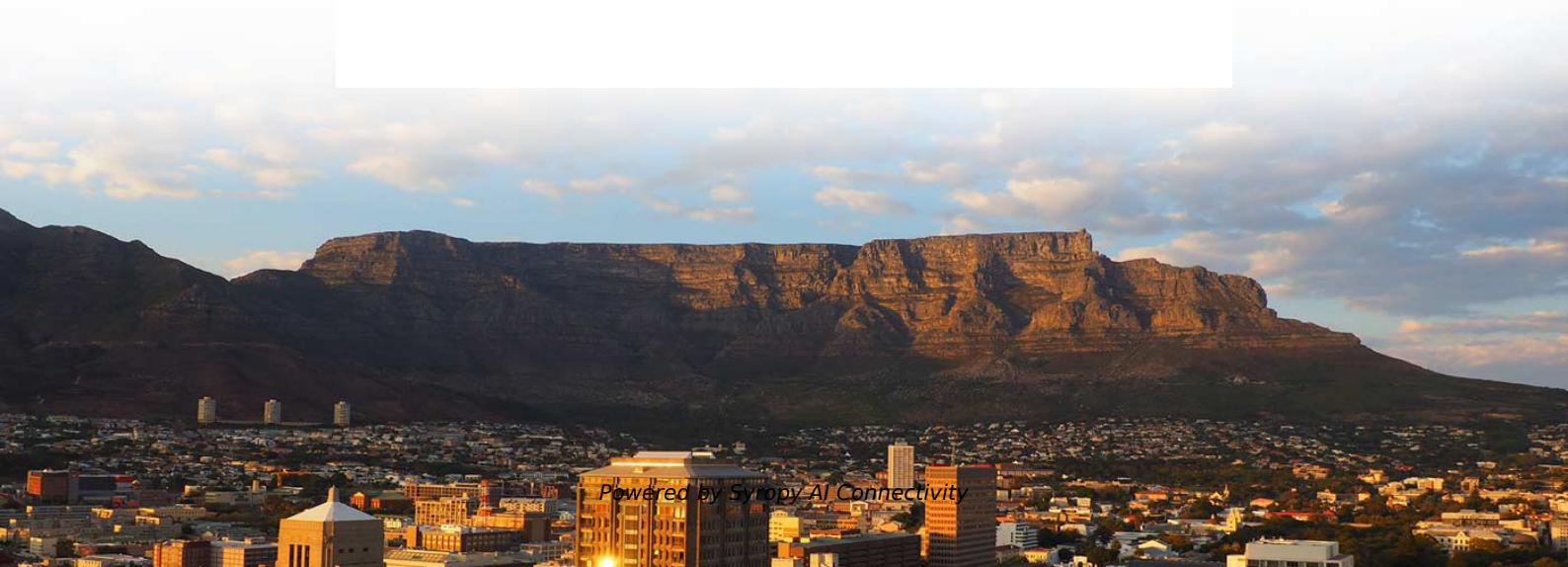
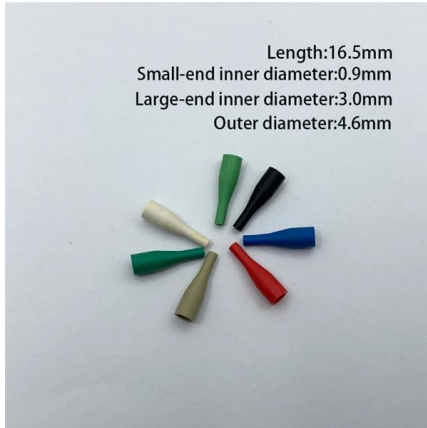


Switching between Relay Protection and Automatic Devices





Switching between Relay Protection and Automatic Devices



Electromechanical Relays: Explained Simply (Uses)

Unlock the world of electromechanical relays! Understand the basics, explore their applications, and discover how these handy devices control circuits.

Practical Guide: Design and Protection Considerations for Developing

Therefore, this paper offers a step-by-step guide to developing reliable and secure ATs, drawing from the authors' field experiences and lessons learned while implementing such schemes.



The Basics of Control Relays , Relay Control Systems

The Basics of Control Relays Relays are magnetic electromechanical devices with two primary purposes: to isolate different circuit voltages, and to form larger

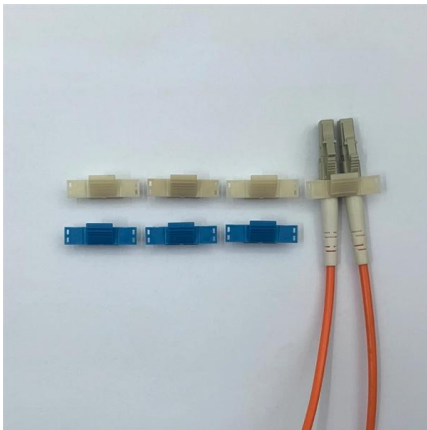
Devices for protection of control circuits

Circuit breakers for equipment and selectivity modules are used for selective protection of individual devices and equipment in parallel in order to increase plant availability and protect against the



Contactor-based Automatic Transfer Switch solutions

List of control and switching devices that are required to implement ATS solutions Wiring diagrams of contactors, voltage monitoring relays and other complementary products control and switching



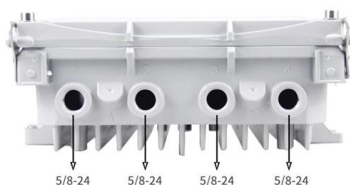
Design and Construction of Automatic Changeover Switch Using

This Research, design and construction of an automatic change over switch using contactors with generator cut off is an automatic switching mechanism that transfers the consumer loads to a power



Relay

A relay Electromechanical relay principle Electromechanical relay schematic showing a control coil, four pairs of normally open and one pair of normally closed contacts





Centralized Substation Protection and Control

The report then discusses some of the emerging and future applications for protection and control which will require a paradigm shift in the way we approach the engineering, operation and maintenance of

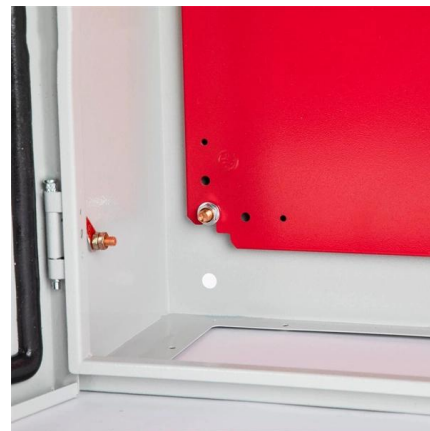


Electrical Switchgear Protection , Electrical4U

Key learnings: Switchgear Definition: Switchgear is defined as a set of devices used for switching, controlling, and protecting electrical power systems.

Relay Fundamentals: A Comprehensive Guide for

They enable low-power signals to control high-power devices and provide isolation between input and output circuits. Relays are widely used in



SEL-751 Feeder Protection Relay , Schweitzer

The SEL-751 Feeder Protection Relay is ideal for directional overcurrent, fault location, arc-flash detection, and high-impedance fault detection applications.

Automatic changeover systems in medium



voltage networks , EEP

Most ATS controllers can control both types of switching devices. Automatic changeover systems range from simple main/standby set-ups to highly complex distribution systems and this is

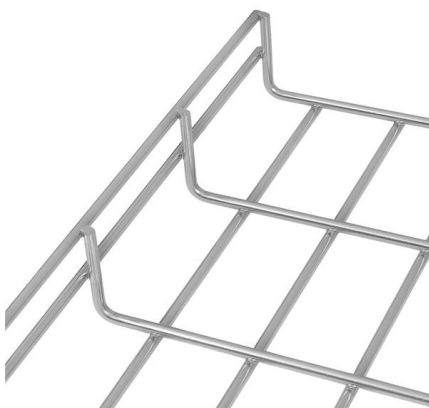


Throw-Over Transfer Switch for Digital Relay Protection and

Abstract: Critical kinds of relay protection and automation devices, used in the power industry need to be furnished with an automatic throw-over transfer switch (ATS) for changeover between power supply

3-Phase Automatic Changeover (ATS) using Contactors

In this article, we will show how to wire an automatic changeover switch using contactors, timers, relays and circuit breakers for three-phase loads with



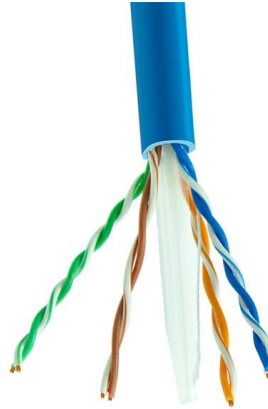
Distribution Automation Handbook

Because the protection areas of the interlocking-based protection concept are not overlapping and because they do not reach into the protection area of the next relays in the protection chain, a



What is a relay, and where is it used?

Solid-State Relay (SSR): Uses semiconductor devices, faster and without moving parts. Reed Relay: Compact, with magnetic switch contacts inside



White paper ATS021-ATS022 Automatic transfer switching

2. Description of ATS SWITCHING: as mentioned previously, to achieve automatic switching, the installation can be provided with an automatic transfer Switch atS (available in versions 021 and 022)

Power System Protective Relays: Principles & Practices

As the protected components of the electrical systems have changed in size, configuration and their critical roles in the power system supply, some protection aspects need to be revisited (i.e. the use of



WebiTelecomms Cabling

Protective relay

Electromechanical protective relays at a hydroelectric generating plant. The relays are in round glass cases. The rectangular devices are test connection blocks,

Relay Types, Operation, and Applications ,

A relay is an electrically operated switch used to isolate circuits, switch between circuits, and control a high-power circuit with a low-power signal.



Switchgear and protection

The apparatus and method use for switching, controlling and protection of the electrical circuits and equipment is known as switchgear and protection.

Types of Electrical Protection Relays or Protective Relays

A protective relay is an automatic device that detects abnormalities in an electrical circuit and closes its contacts. This action completes



Comparison of Protection Relay Types

This comparison summarize characteristics of all protection relay types described in previously published technical articles:



Circuit Protection Methods

Addition of supplementary protection between the fuse or circuit breaker and the end load can provide selectivity, resetability, switching capability, and enhanced Short Circuit protection.



The Best Automatic Transfer Switches

The little to no downtime between switching means you won't lose power even if your primary source fails. To help you choose the best automatic

Different Types of Protective Relays , 360training

Protective relays play a vital role in safeguarding electrical systems, ensuring safety, and preventing costly equipment damage. These devices are



Automatic transfer switches (ATS) fundamentals , Eaton

Low-voltage automatic transfer switch assemblies provide a reliable means of transferring essential load connections between primary and alternate sources of



Difference between Relays and Switches

Relays control high power circuits with low power signals, switches connect or disconnect circuits manually or automatically. Choosing the right



Contact Us

For datasheets, pricing, or custom high-speed optical interconnect solutions, please visit:
<https://www.syropy.com.pl>