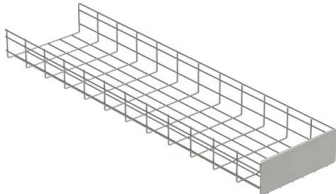


Switch Firewall Core Switch





Switch Firewall Core Switch



What is a Core Switch , Functions and Difference over Normal Switch

What is a core switch and how it works? This article builds the basics of this kind of switch for the ones who don't know anything about it. What is a Core Switch? It is a powerful

L3 Core to Firewall question

My issue is in deciding whether to use the "core" switches OR the Fortigate firewall as the default gateway/L3 switch in the network. As far as my research has revealed, using the "core" for this



Umzug der Firewall und Einsatz eines Core-Switches

2) Welchen Switch würdet ihr als Core-Switch dafür einsetzen, der genug Bandbreite hat, um alle Switche zentral anzubinden und per Glasfaser mit

What's the general purpose of having your core switch connect

What's the general purpose of having your core switch connect to a firewall for internet AND directly to the internet on a different port on the same switch?



Internet Connection Termination: Core Switch vs Firewall

In cases where there's a HA firewall setup, I believed that, instead of introducing another switch between the ISP and the firewall cluster, it makes sense to connect the ISP directly to the core switch and



What is the best practices for Users Getaway! Core Switch or Firewall

Dear Experts, I am wondering what is the best practices for the user getaway. is Core Switch preferred to be the getaway for all user after this the traffic go to the firewall Or the Firewall



What is the best practices for Users Getaway! Core Switch or Firewall

If your network consists of several internal routable subnets and the devices/systems on those subnets communicate regularly and do not warrant being separated by firewalls, the gateway



Network Setup for core and firewall

They all share the same core switch while having a personal firewall (obviously). If that is not your case, I would recommend following the above advice about swapping the ASA and core



Gateways on Core Switch vs Firewall : r/networking

Gateways on Core Switch vs Firewall I'm struggling with some design options for a network redesign I'm planning at my company. The background: Today I'm running a relatively simple network topology.

How to Configure OSPF Between Firewall and Core Switch

In this video, we configure OSPF routing between a Core Switch and a Firewall and perform complete failover testing to verify redundancy, dynamic route exchange, and high availability.



Routing on firewall or core switches? : r/networking

In my research I'm getting mixed suggestions - Some say that core switches are for routing, when others say that core switches have to be as fast as possible and have minimal tasks dedicated to them.



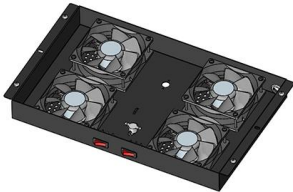
Recommendation for a connection between Core Switch and Firewall

Solved: Hello, I am asking myself what others recommend for the connection between core switch and Firewall. The setup is the following: Two Catalyst 9300 Core switches in stack.



Allow routing via Internal firewall for Core switch

Hi, we have below architecture in which routing between different firewall take place via Internal firewalls only. We have used the core switch only



Router vs Switch vs Firewall - Networking Guide

Learn the difference between routers, switches, and firewalls in networking. This beginner-friendly guide explains how each device works using



Umzug der Firewall und Einsatz eines Core-Switches

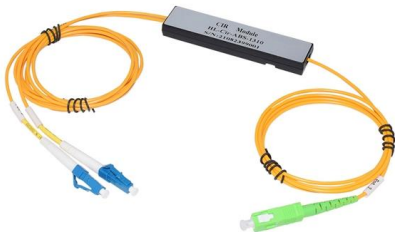
Ich schlage vor, einen kleinen Switch mit 12-24 Ports (direkte Glasfaser Ports oder SFP+) als Core-Switch einzusetzen. Der interne





Link between Firewall and Core Switches : r/networking

Link between Firewall and Core Switches We will soon be deploying some core switches. When going upstream (towards outside) from the core L3 switches to a set of firewalls, I'm unsure if the the links

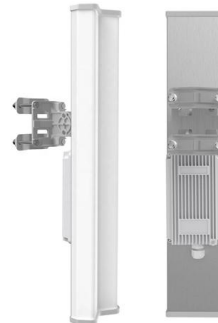


When to Route on Core Switches vs Next-Gen Firewalls in Enterprise

Learn when to use core switch routing vs next-generation firewall routing in enterprise networks. Explore performance, security zones, VRF design, and hardware platform selection.

Connecting Core switch to firewall

I have a 3750X four-switch stack acting as the core of a fairly simple LAN. All I need to achieve (and this seems inordinately hard, but it is entirely likely that I'm just being dense) is to get



Firewall on the same network of the Core switch and

What disadvantage can you find in this design? For my opinion the firewall would be unnecessary traffic for example maybe broadcast traffic and stuff

Internet Connection Termination: Core



Switch vs Firewall

It sounds a lot like you're actually arguing "Switch vs Firewall", not "Core Switch". Yes, an L2 edge fabric is very nice and has a lot of positives, but that doesn't directly transfer to a core switch.



Recommendation for a connection between Core Switch and Firewall

Hello, I am asking myself what others recommend for the connection between core switch and Firewall. The setup is the following: Two Catalyst 9300 Core switches in stack. The stack

ISP Hooked Up to Core Switch First Instead of Straight

If an attacker is skilled enough to figure all of these out and use some exploit, you're F'd anyways whether that's your core or a \$250 managed 16-port switch from



Core layer , FortiSwitch 7.6.0 , Fortinet Document Library

With 8x100-GbE QSFP28 slots per FortiGate unit, it provides enough capacity to directly connect with 2x100-GbE ports to each of the two core FortiSwitch units at a nonstop forwarding capacity of up to



Was ist ein Core-Switch? Funktionen und Bedeutung

Erfahren Sie, was ein Core-Switch ist und wie er die zentrale Rolle in einem Unternehmensnetzwerk spielt. Unsere Erklärung bietet Einblicke in die



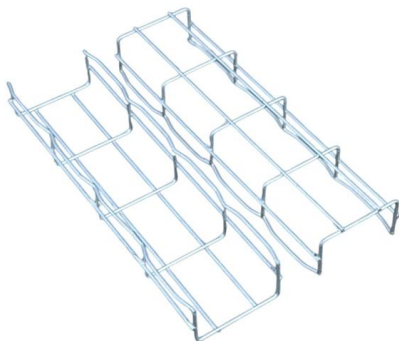
switching

it really depends of your topology, if you do all inter-vlan routing on the core, L3, switch as it seems and then route the traffic on a /30 or /31 network to the firewall then it makes sense. We



Core Switch vs. Distribution Switch vs. Access Switch

Comprehensive guide to Core, Distribution, and Access Switches. Roles in the network and important parameters explained.



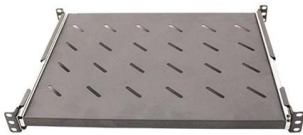
Firewall at Edge vs Core : r/networking

Obviously I would think having a firewall at the Core switch is ideal, however sometimes this may not be possible, (depending where the ISP connection is).



Core Switches: The Pillar of Network Infrastructure

Get a closer look at core switches: the nerve centers of network infrastructure that enhance performance and facilitate growth.

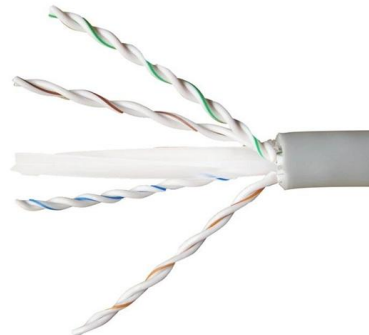


Firewall Deployment: Edge vs. Core

Benefits of Core Firewall Deployment Placing firewalls at the core of your network ensures that even if a threat enters through the perimeter, it faces another layer of stringent checks. This central positioning

FS Community

Hier sollte eine Beschreibung angezeigt werden, diese Seite lässt dies jedoch nicht zu.



Contact Us

For datasheets, pricing, or custom high-speed optical interconnect solutions, please visit:
<https://www.syropy.com.pl>